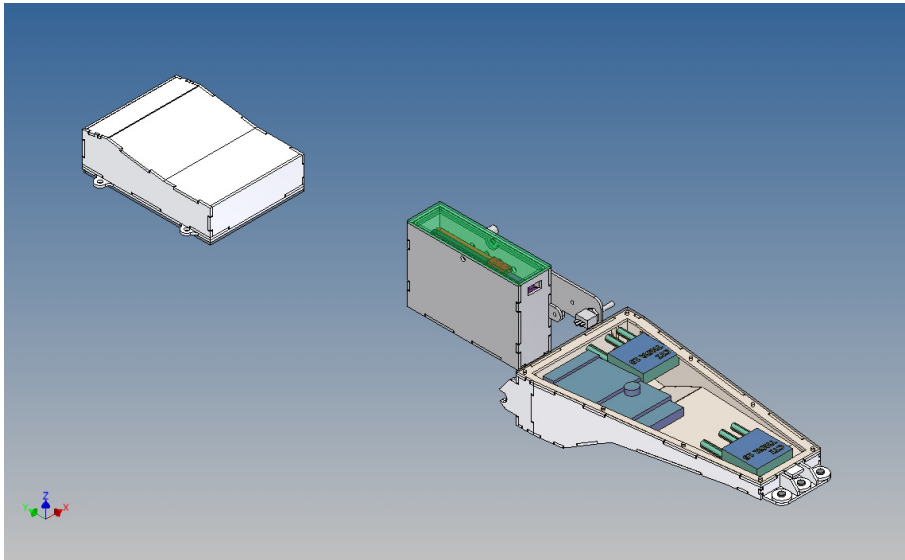


Assembly Instruction

Storage box set for Carson dump trucks Fliegl Stone Master M1:14

Best.-Nr.: 2023-9345-FL3



Version 1.0 – 20.07.2023

General Description

This polystyrene milling parts set is designed for a storage box set for a Carson Fliegl Stone Master dump truck (item no. 500907216) M1:14.

This includes a storage box for a battery (at the level of the tilting spindle), a technology box (between the king pin mount and the tilting spindle motor) and a storage box under the mudguard above the rear axle.

The battery box is screwed to the Carson frame using the holder provided. The box has a cable opening for a BEC battery plug in the direction of travel or opposite direction. The battery box is closed from above using two magnets. The included holder has a holder for a toggle switch. Internal dimensions of the battery box: length 75mm x width 20mm x depth 48mm

The technology box is hung on the tilting spindle axis and is fixed to the front of the trailer frame using two magnets. A standard servo plug, possibly for an IR receiving diode, can be inserted through the recess in the front wall. There are already round or square openings in the back area. These are only indicated and must be cleared at your own discretion or benefit.

To close the technology box, a cover plate is screwed on from above.

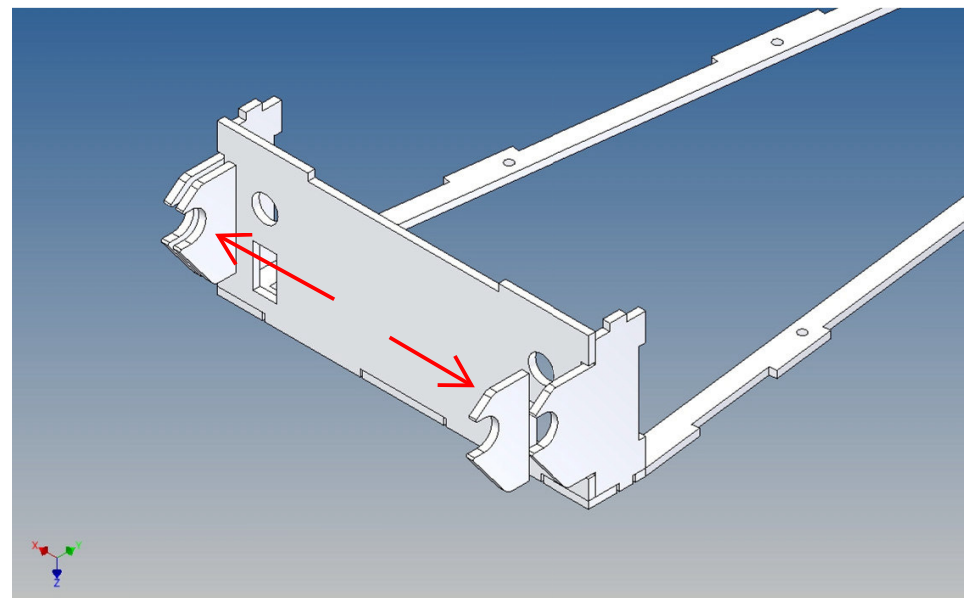
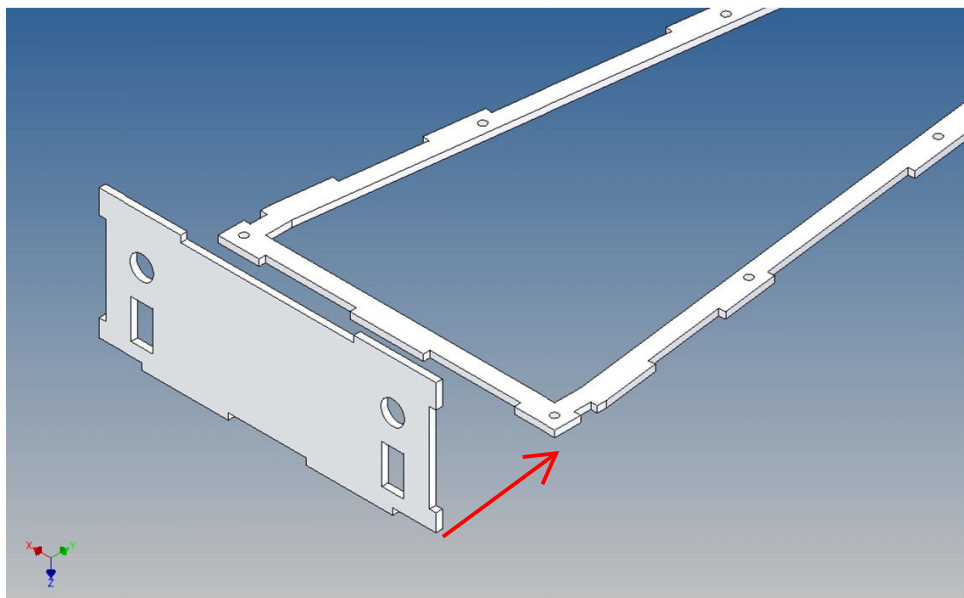
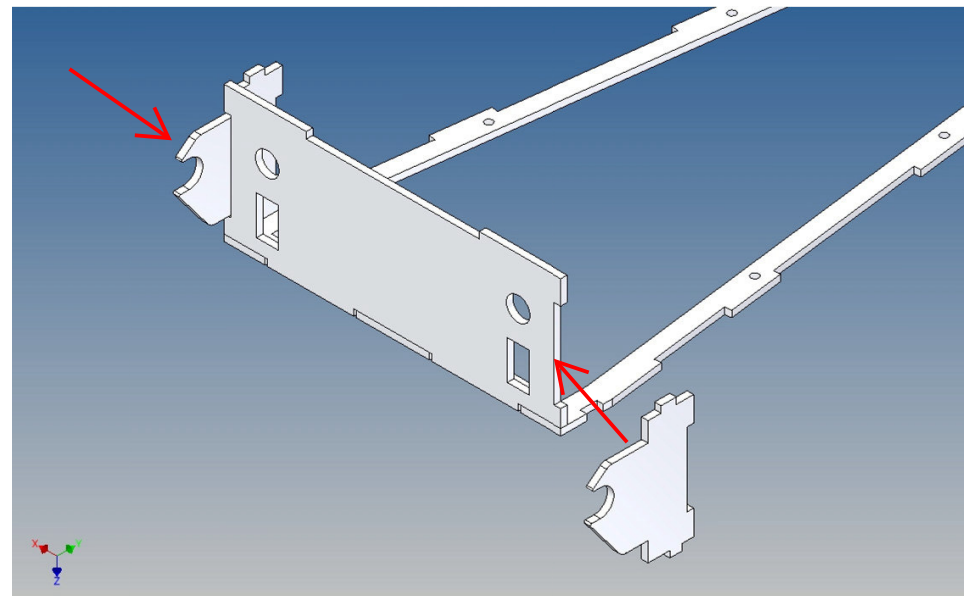
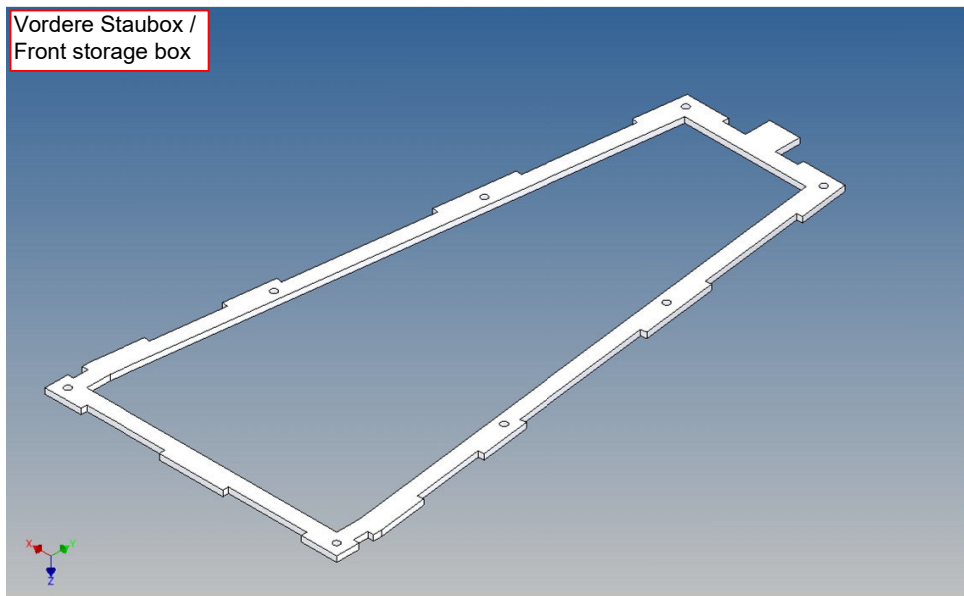
Assembly Procedure

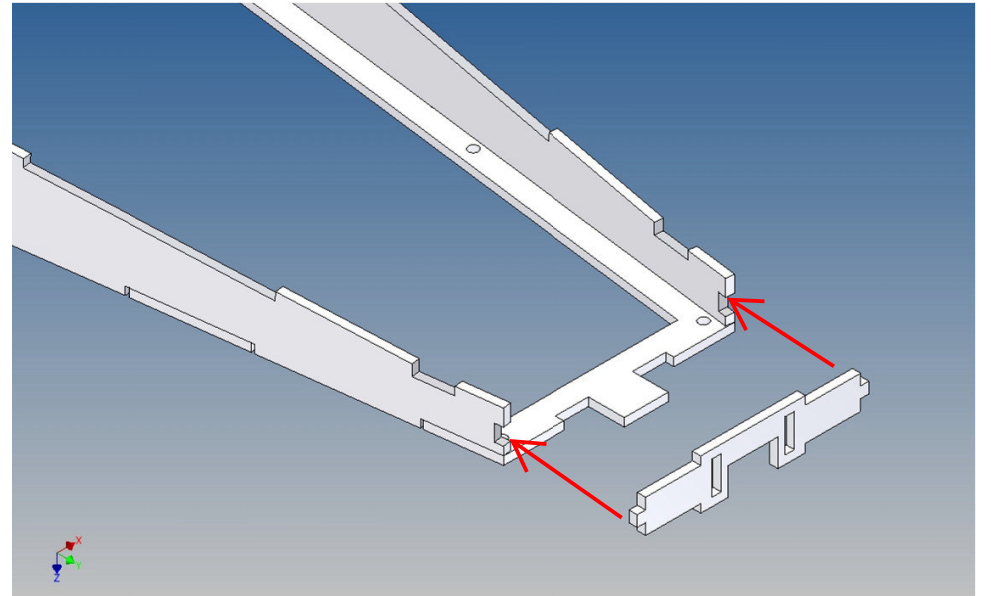
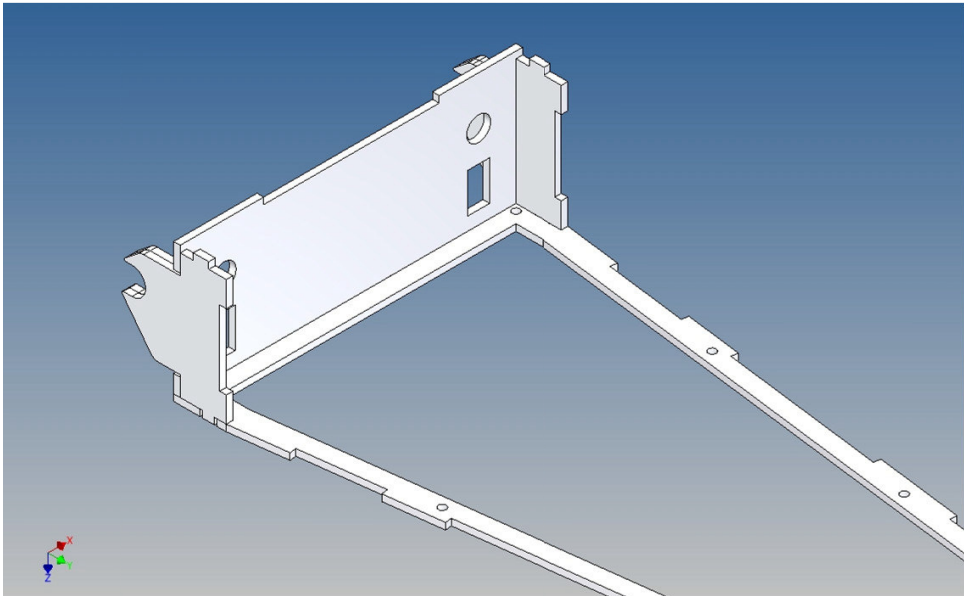
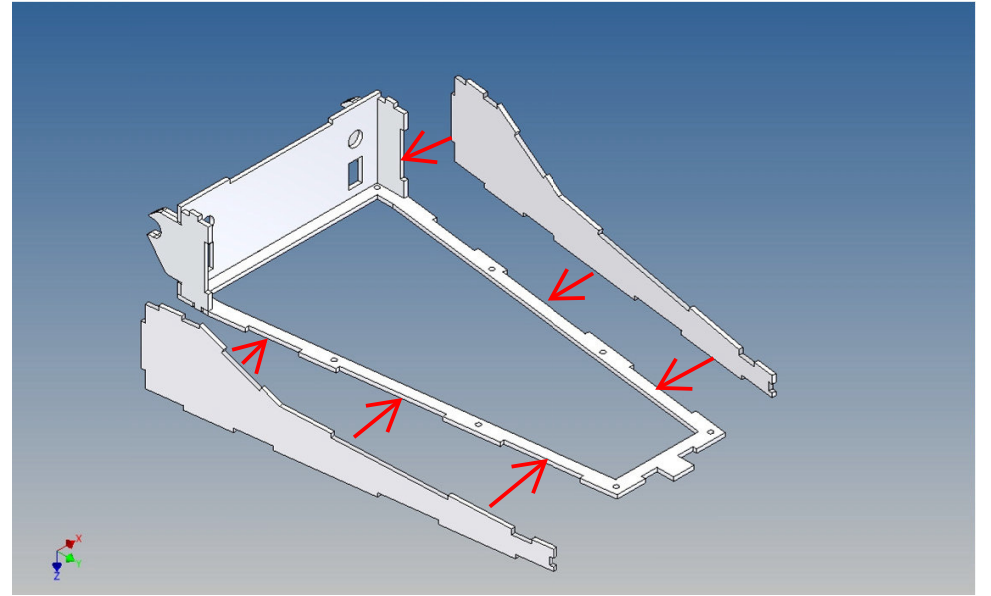
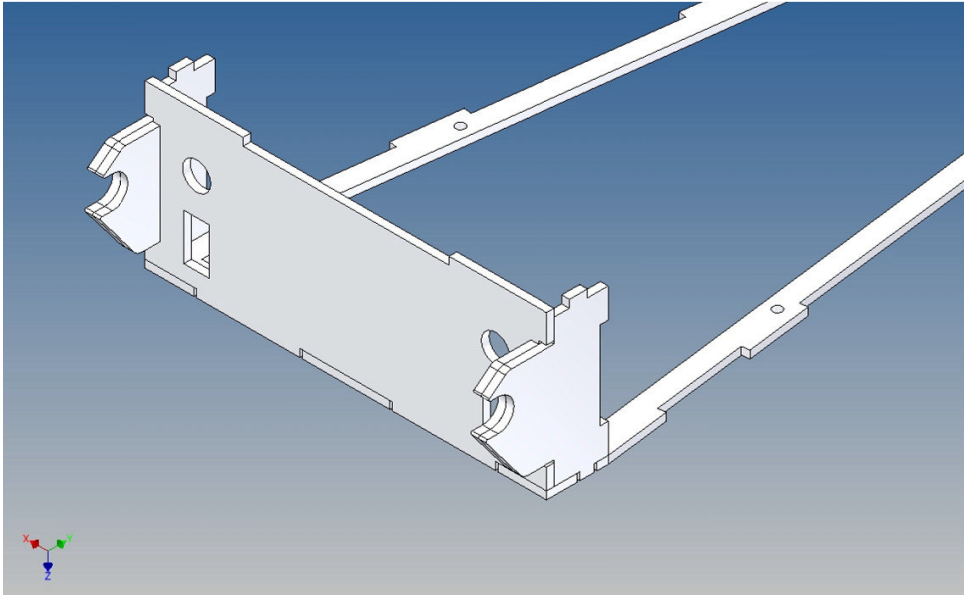
Before you put the parts together please read the assembly instructions carefully and pay attention to the assembly sequence and test the fitting accuracy of the parts before gluing them together.

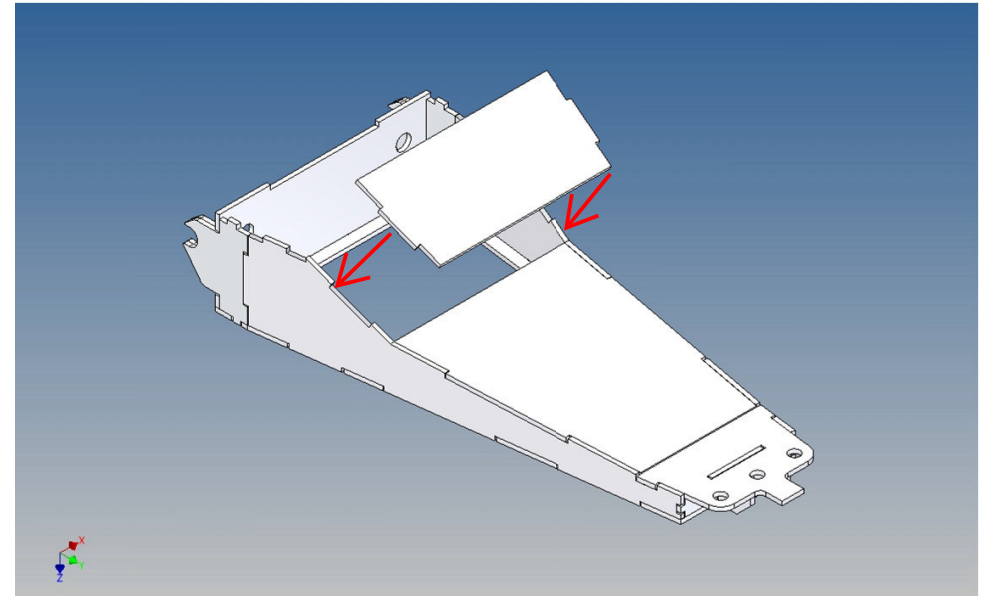
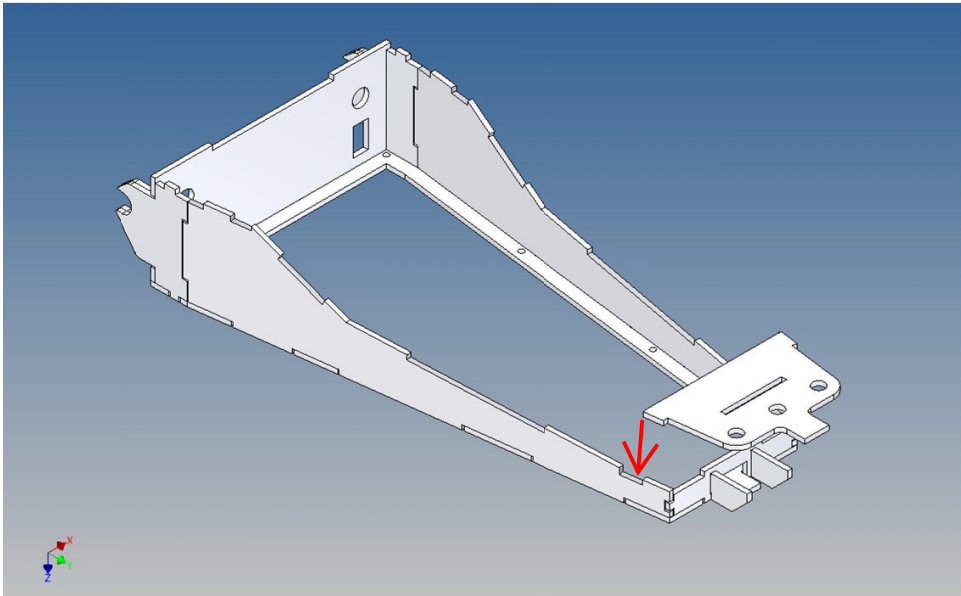
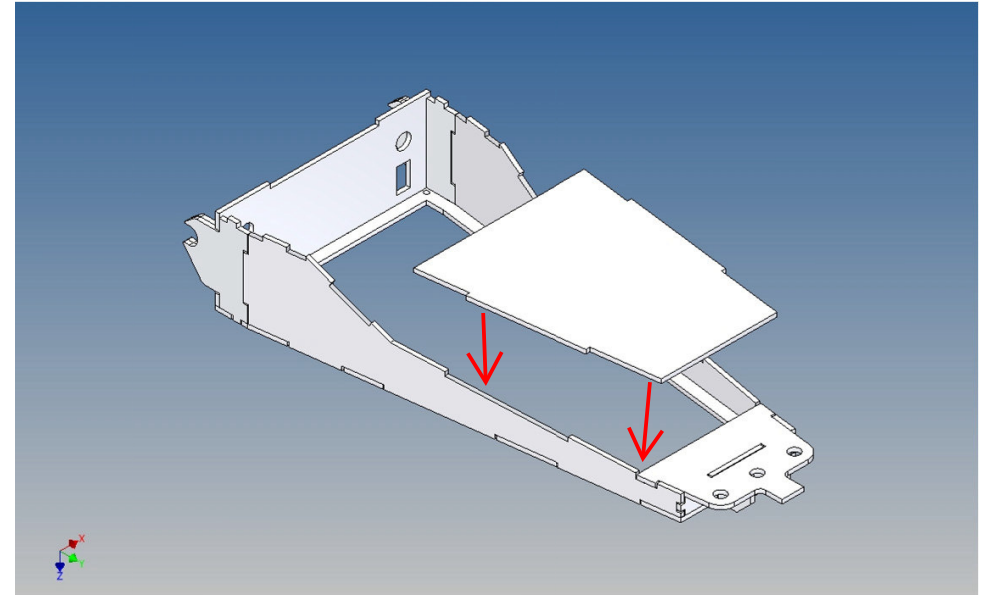
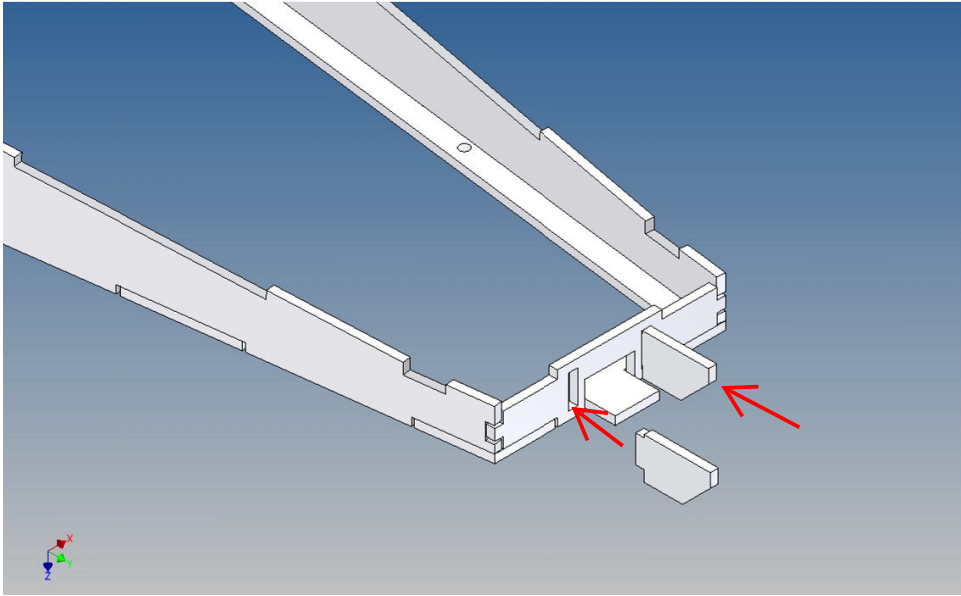
It is helpful to fix the parts at first only on a few points with super-glue and after a check along the edges fully with super-glue or a polystyrene-glue.

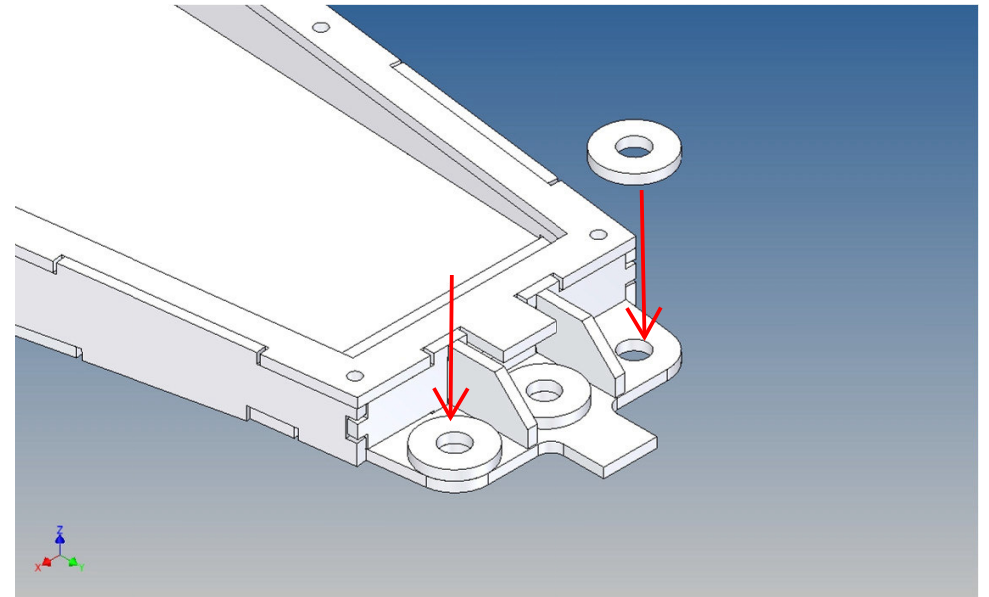
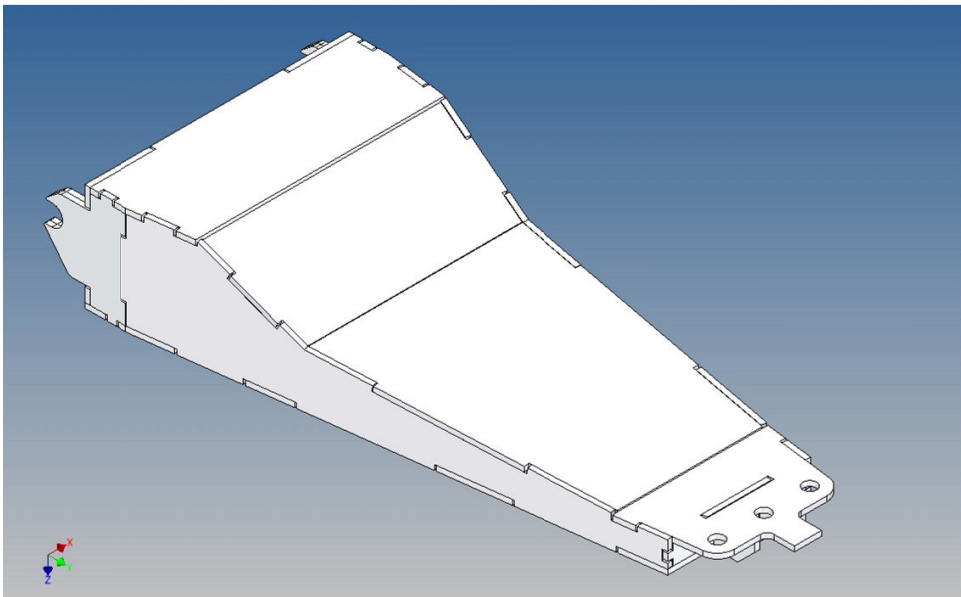
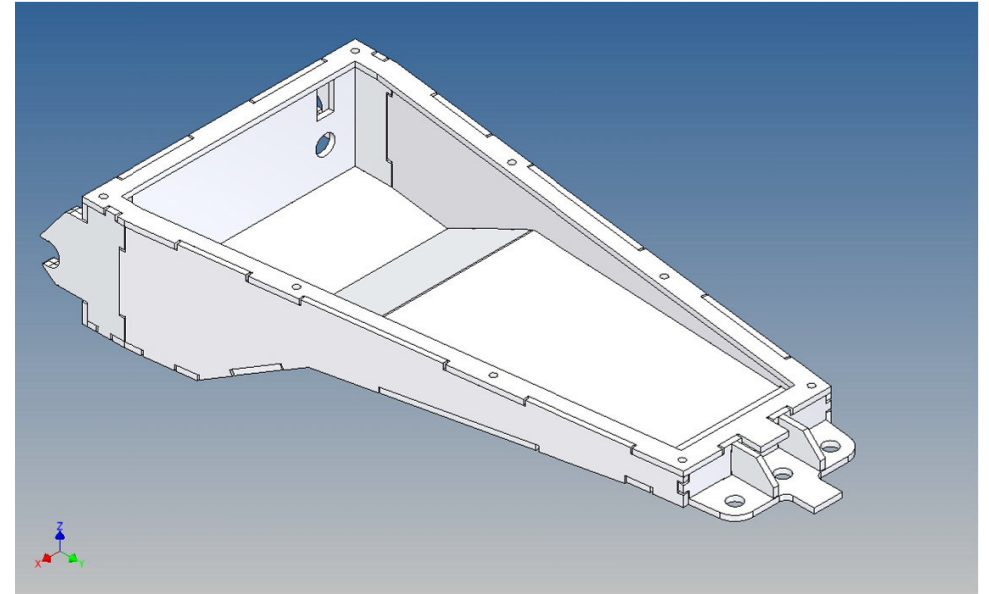
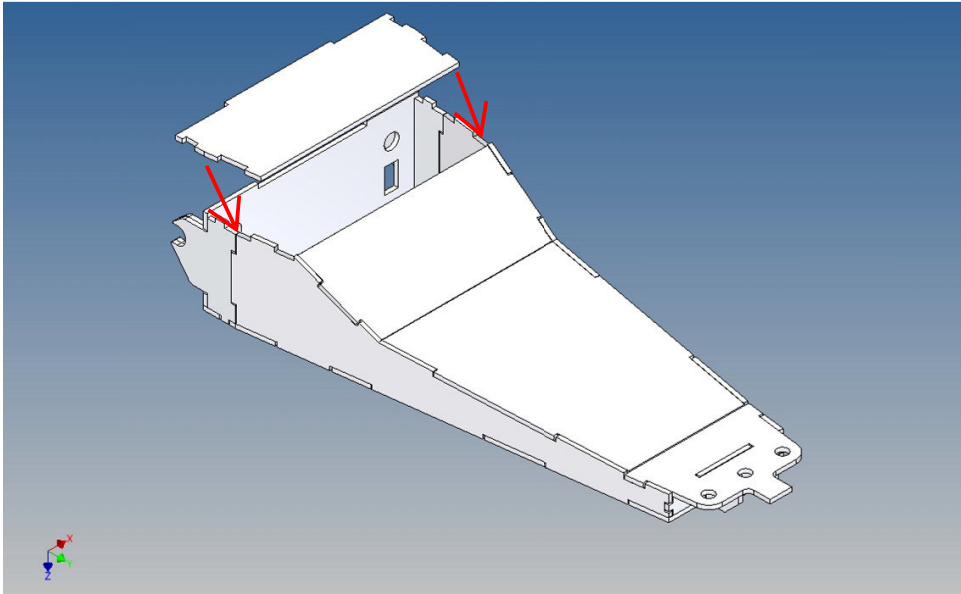
The parts are made of polystyrene, if you use super-glue in combination with activator spray, please be aware that the activator spray can destroy polystyrene – because of that you should use it very carefully or use only polystyrene-glue.

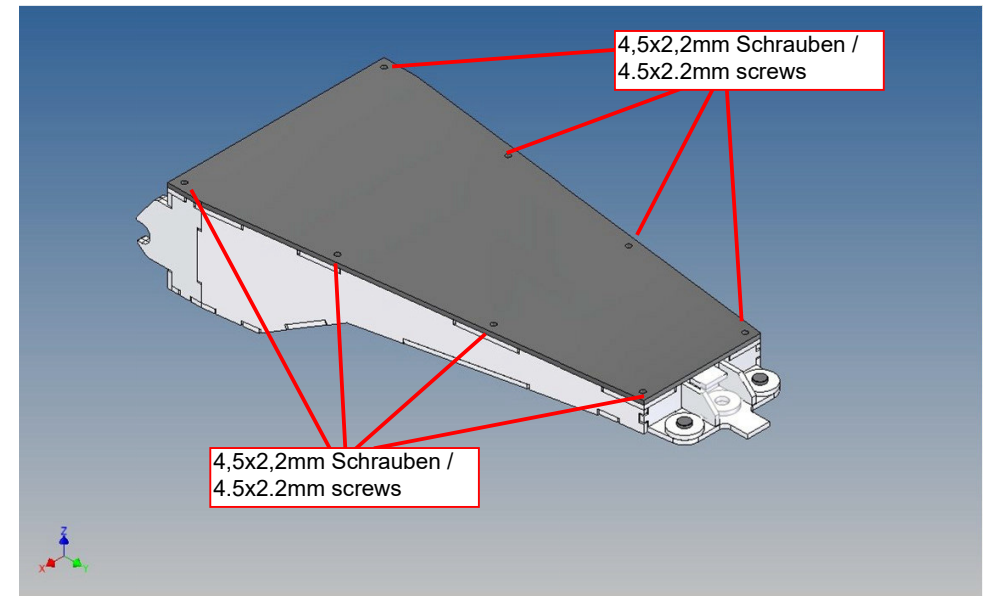
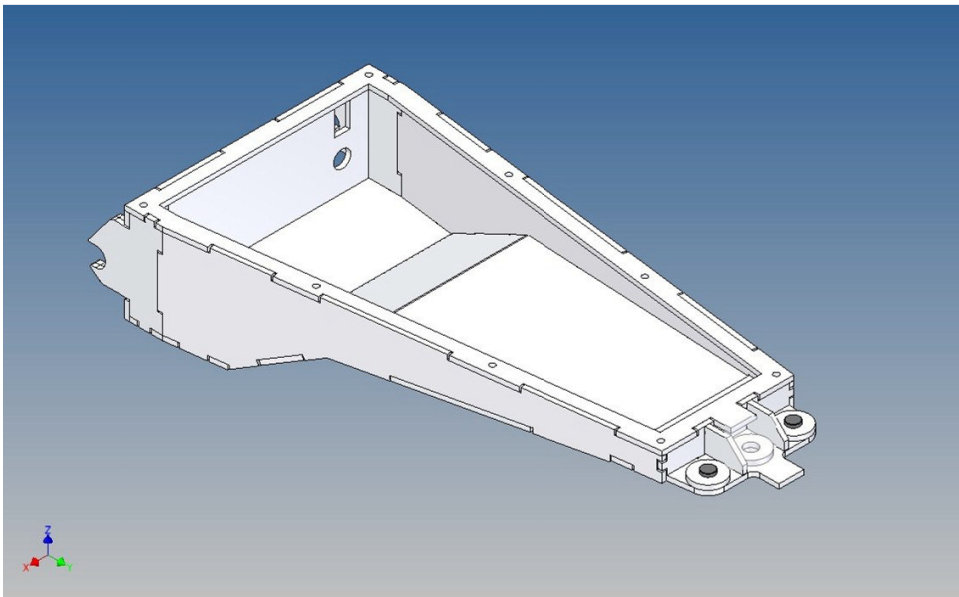
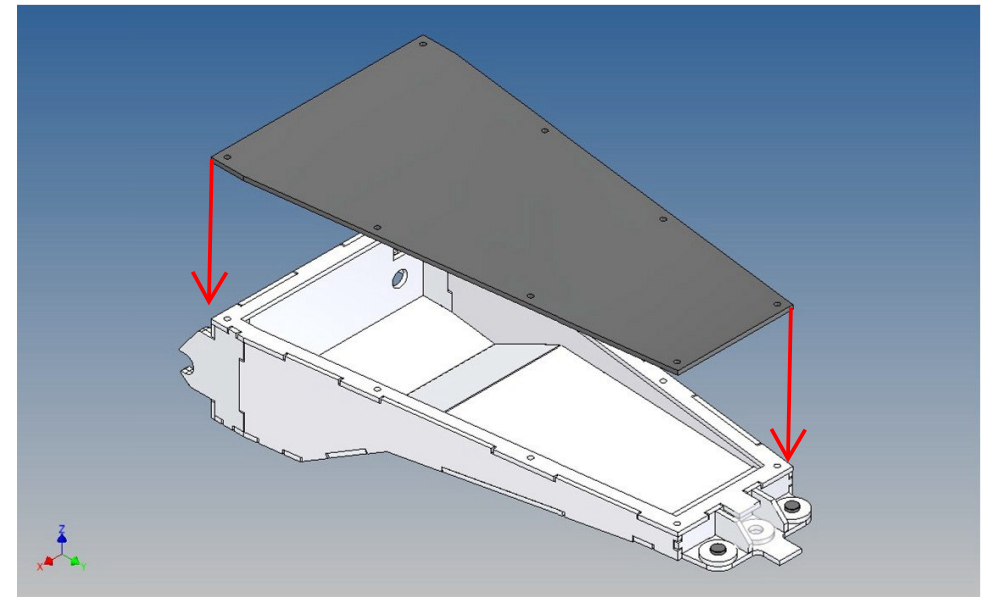
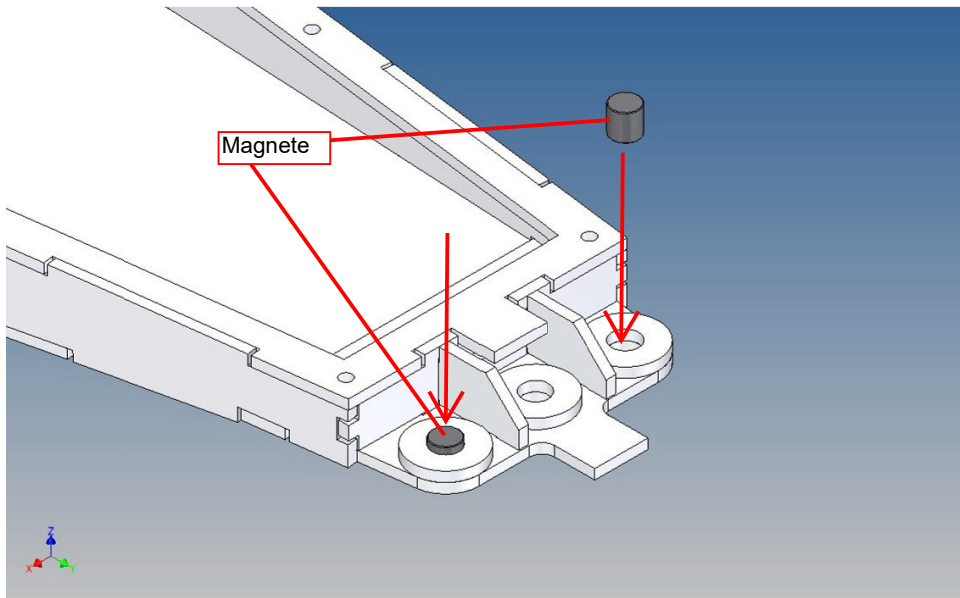
Vordere Staubbox /
Front storage box



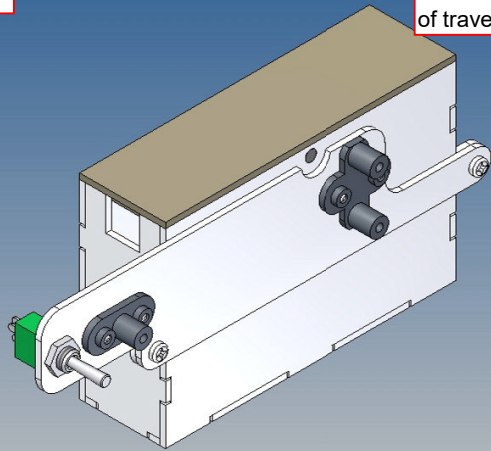




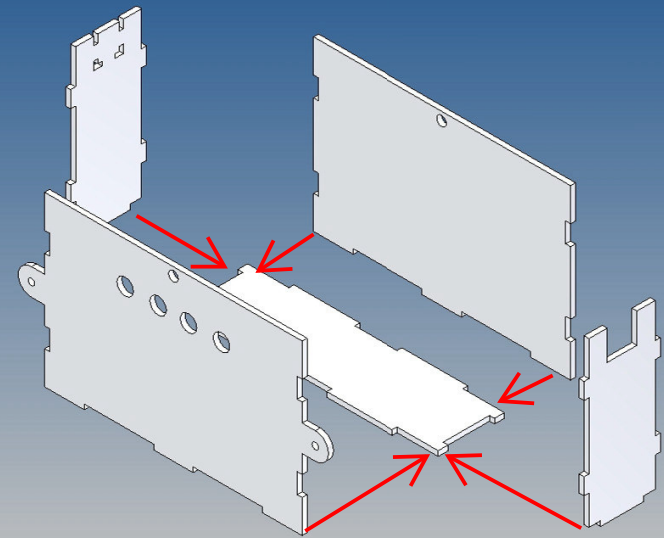




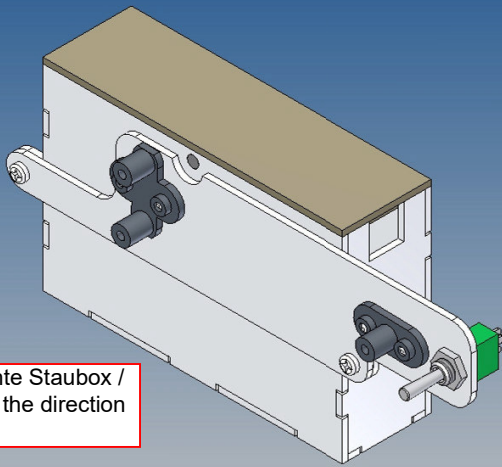
Mittige Staubox /
Central storage box



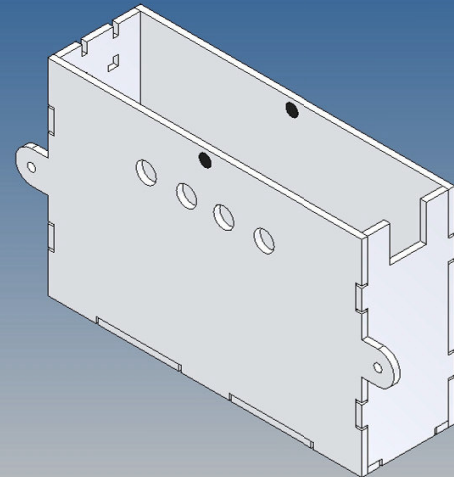
In Fahrtrichtung linke Staubox /
Left storage box in the direction
of travel

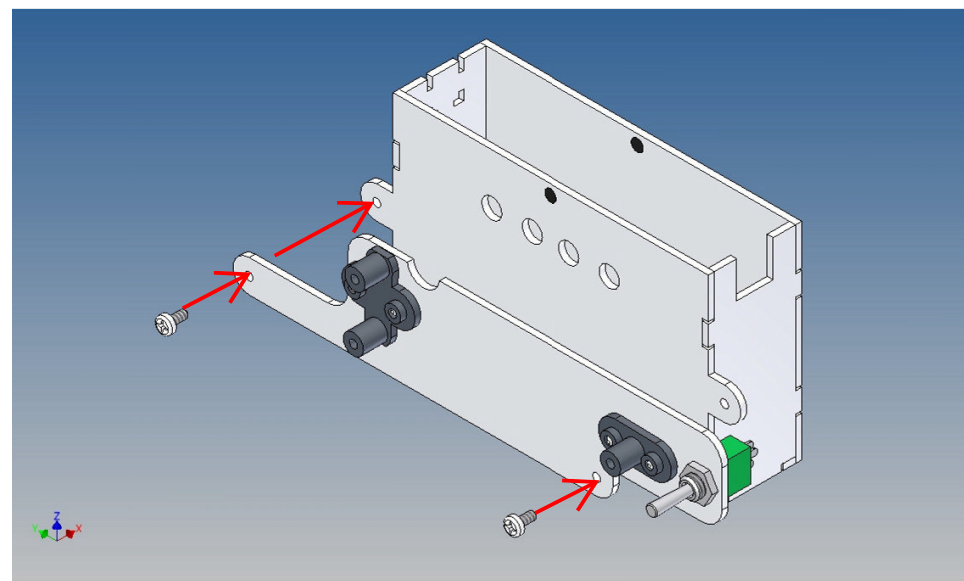
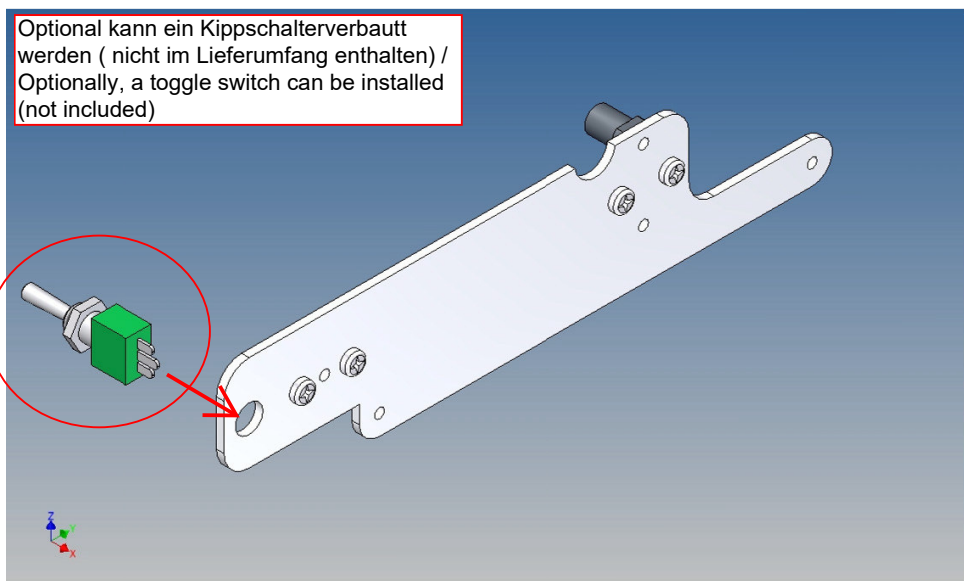
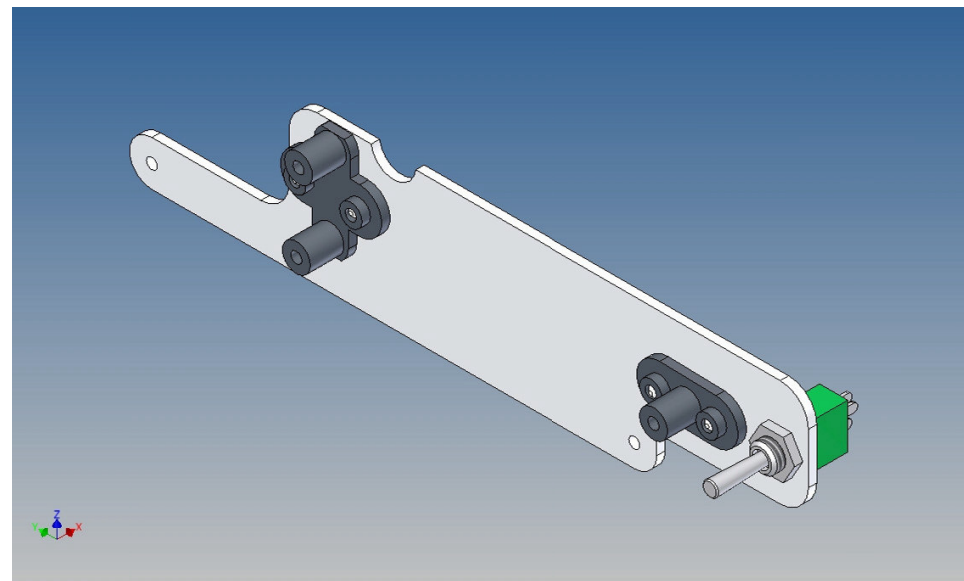
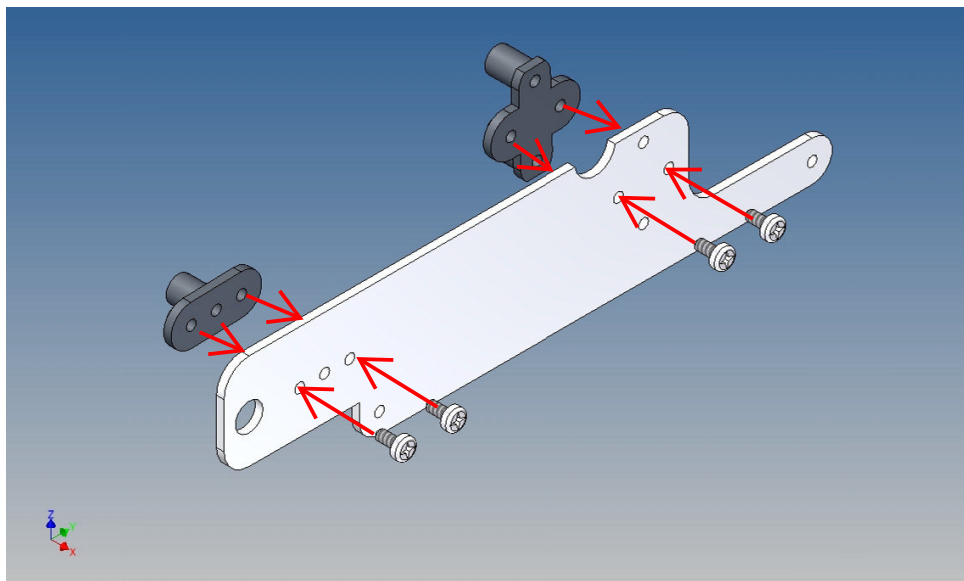


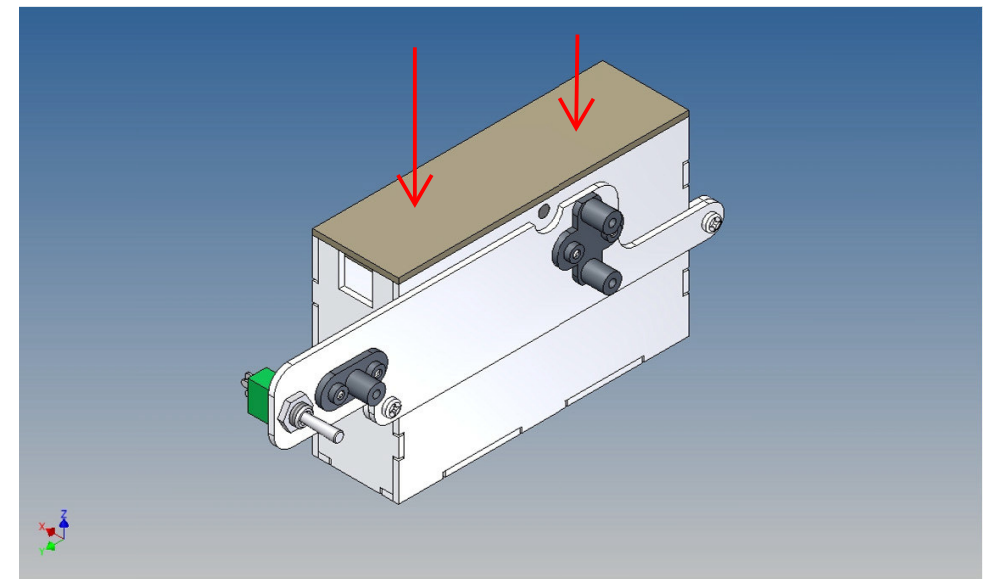
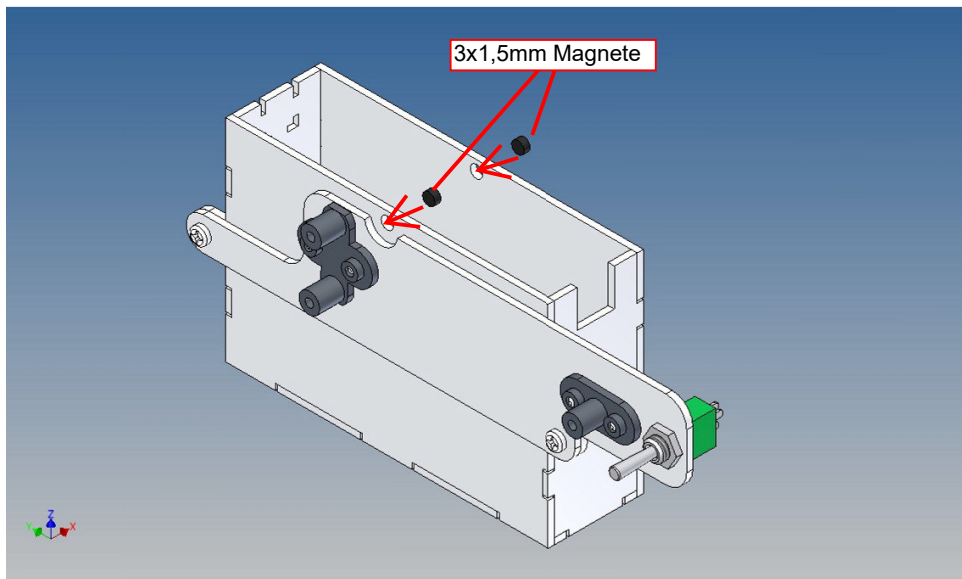
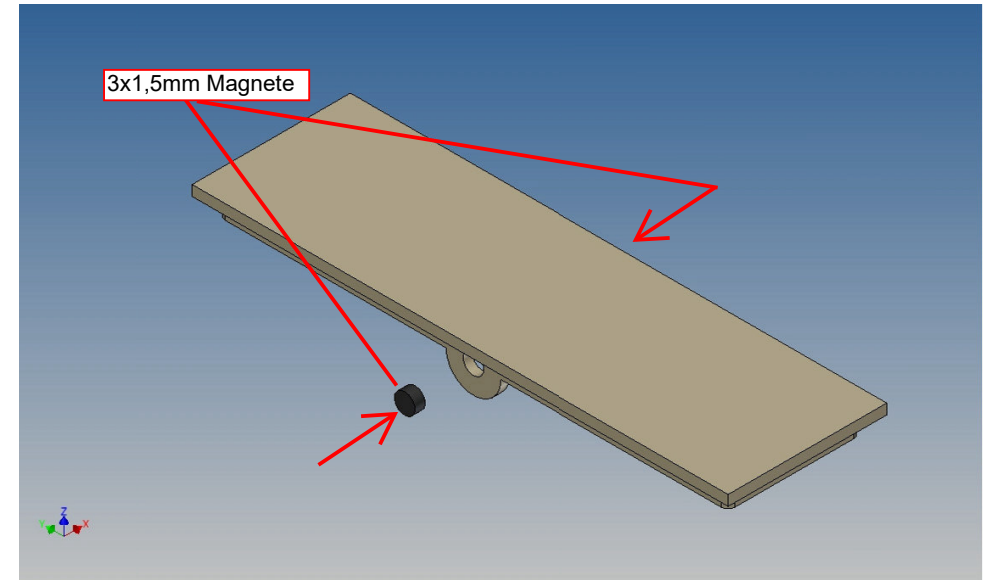
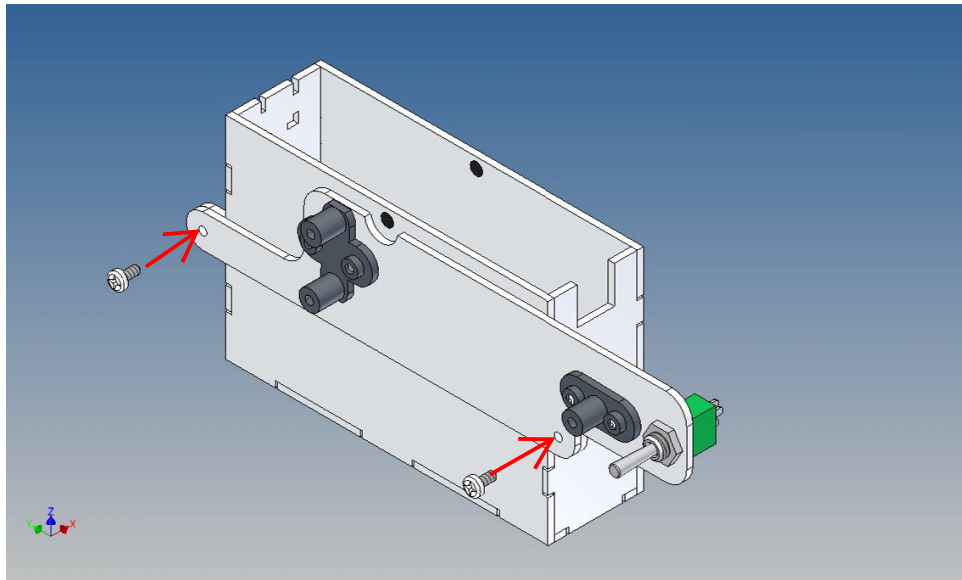
!ACHTUNG! - Diese Staubox kann sowohl in Fahrtrichtung links oder rechts montiert werden. Bei diesen Bauschritten wird eine in Fahrtrichtung montierte rechte Staubox gezeigt. Je nachdem wo Ihr Hubgetriebe verbaut ist. /
!ATTENTION! - This storage box can be mounted on the left or right in the direction of travel. These construction steps show a right storage box mounted in the direction of travel. Depending on where your lifting gear is installed.



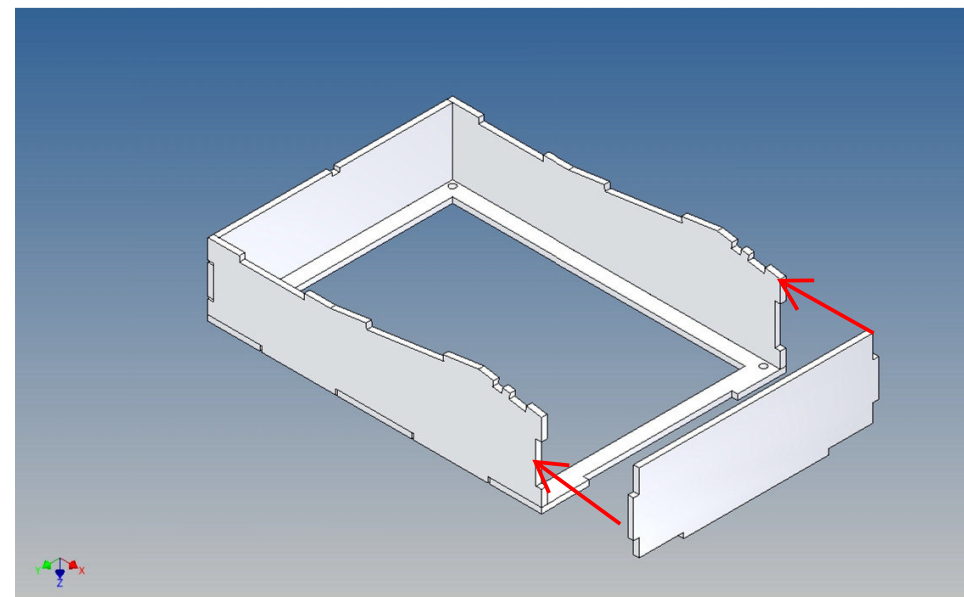
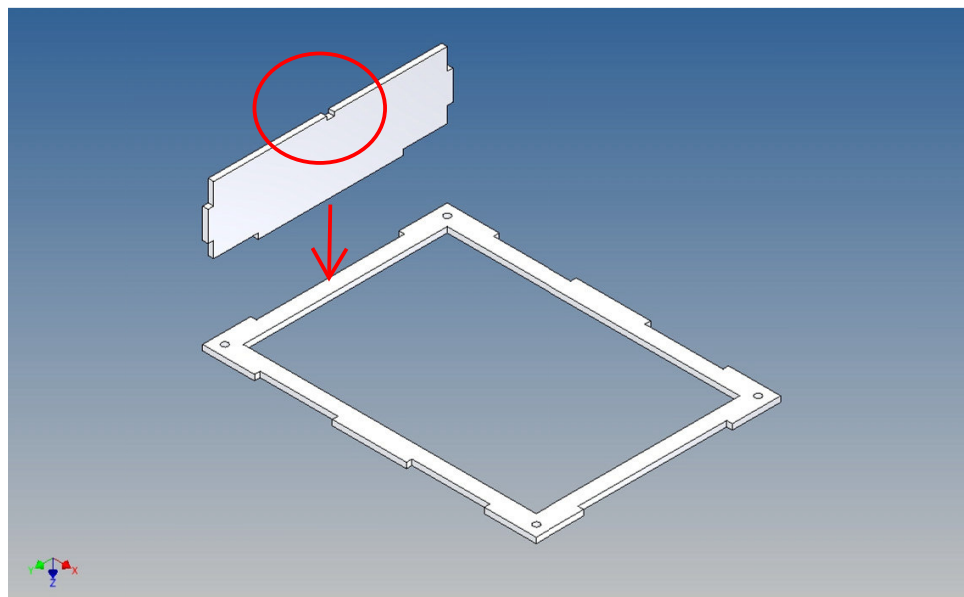
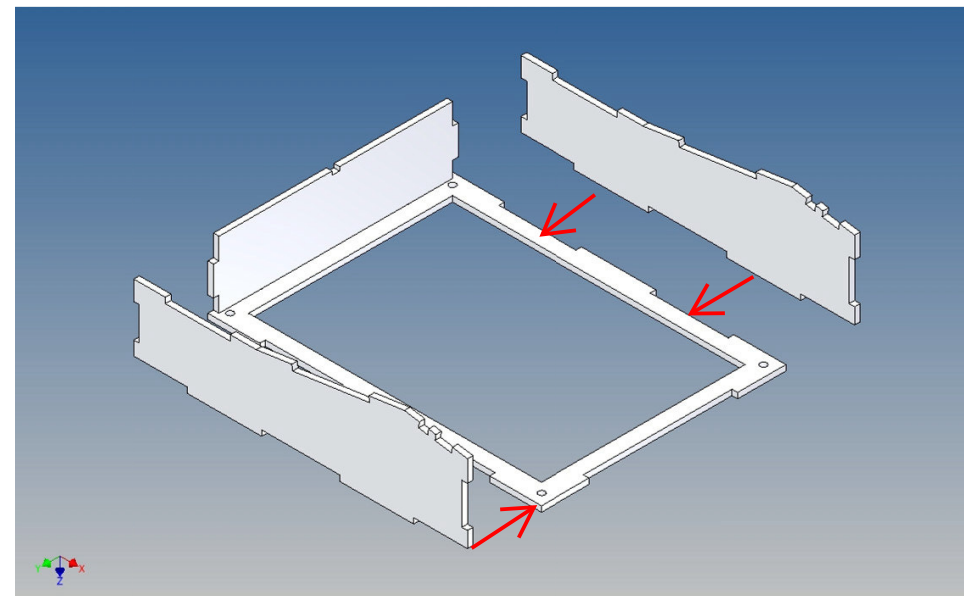
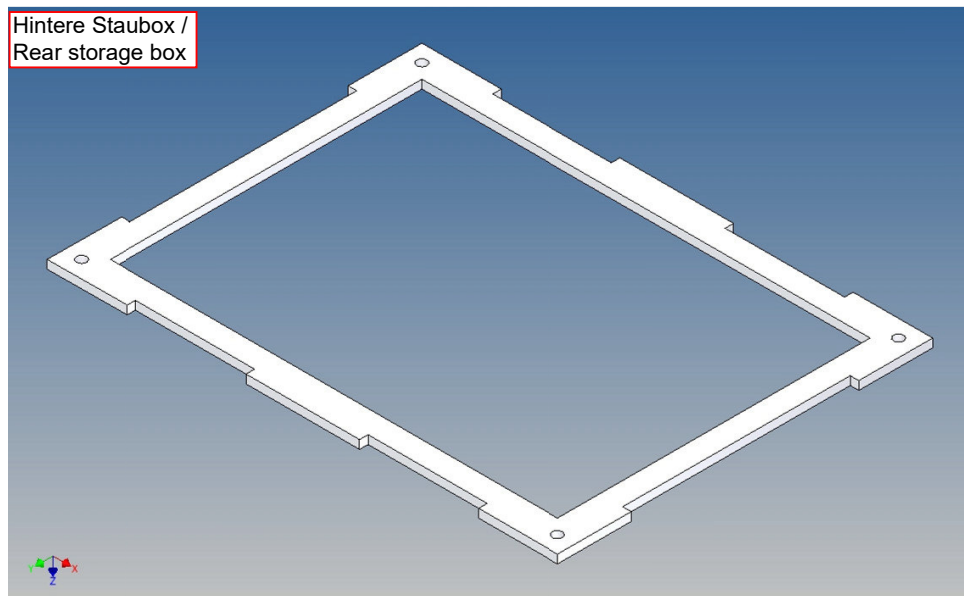
In Fahrtrichtung rechte Staubox /
Right storage box in the direction
of travel

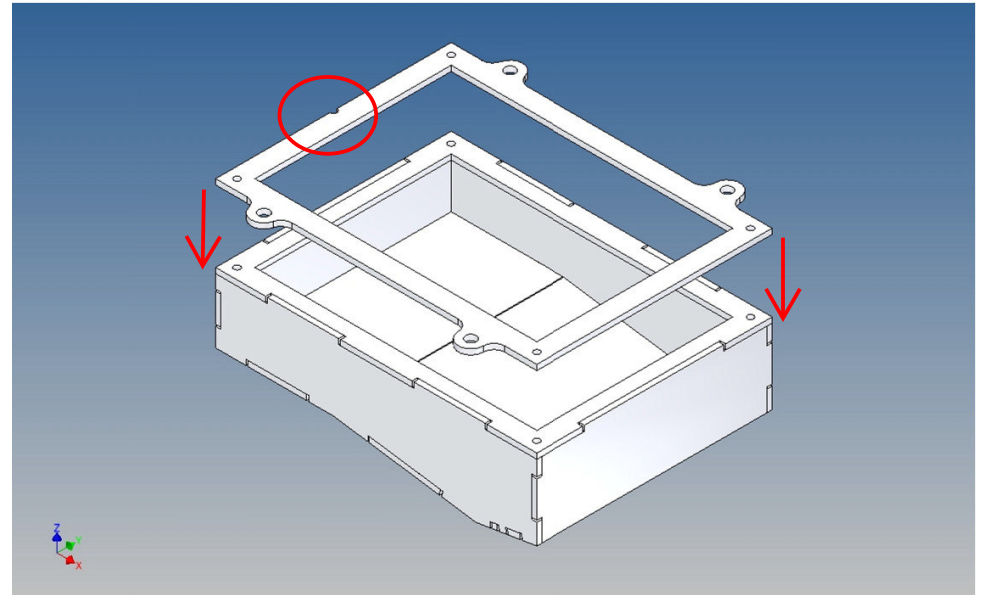
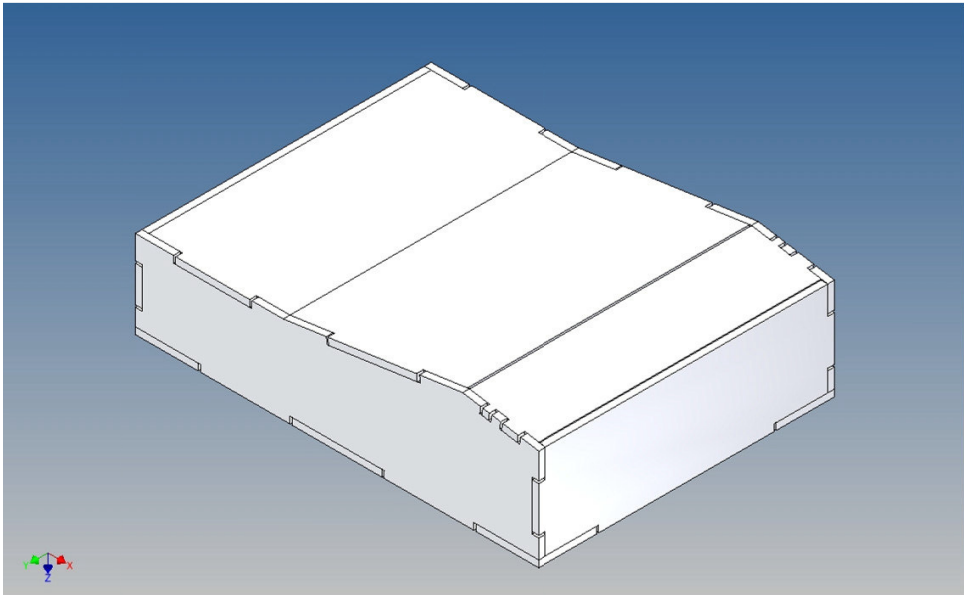
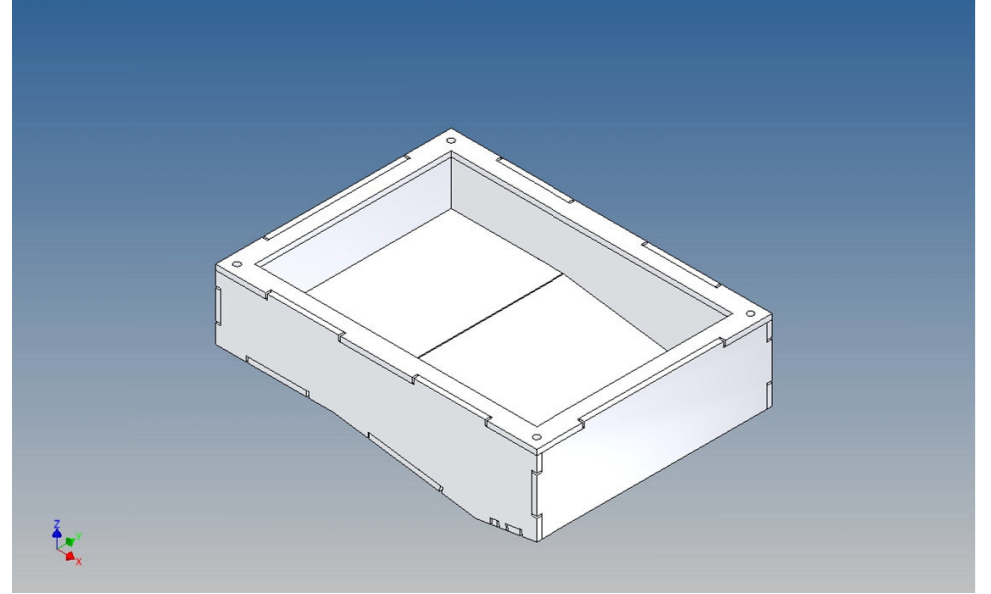
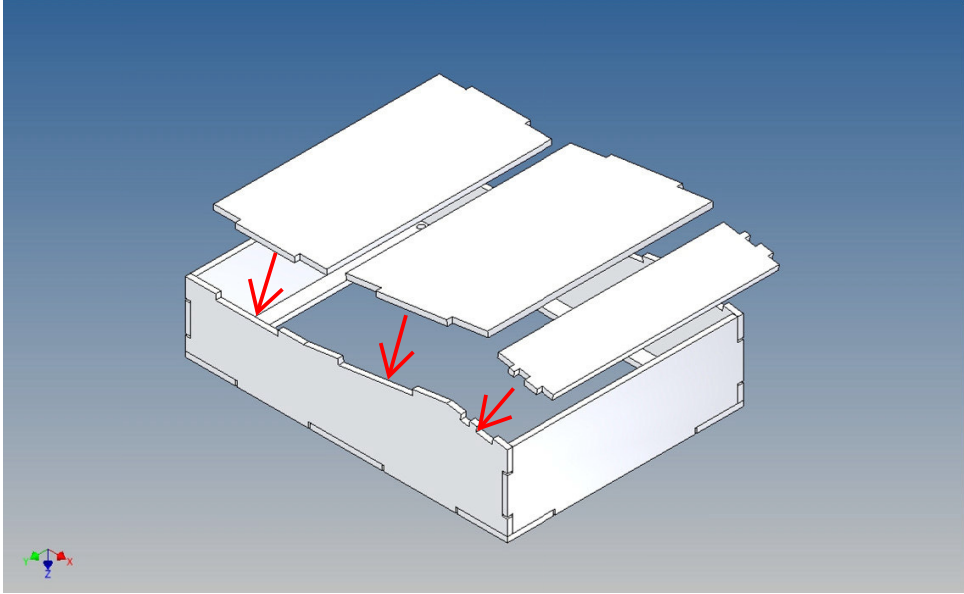






Hintere Staubbox /
Rear storage box





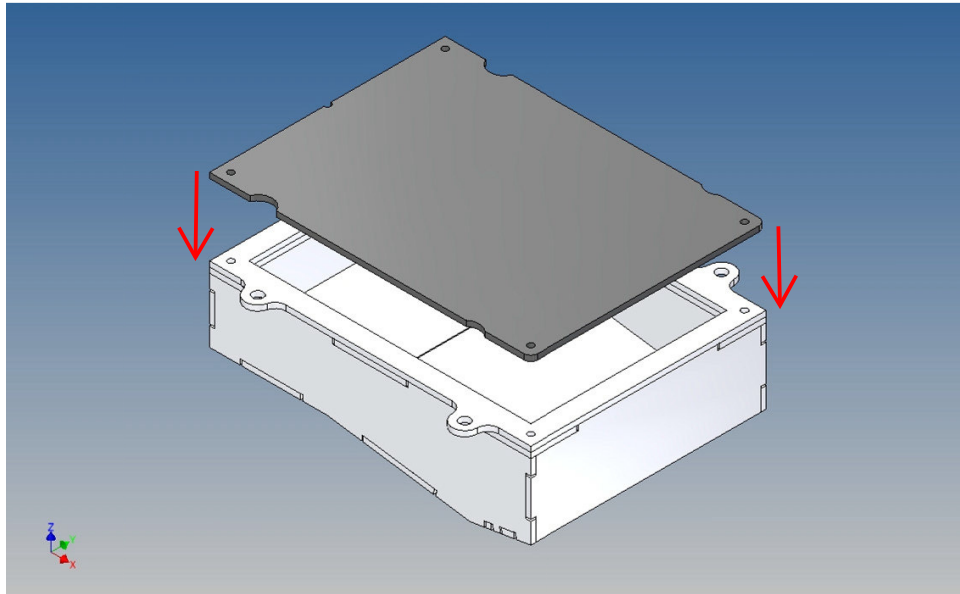
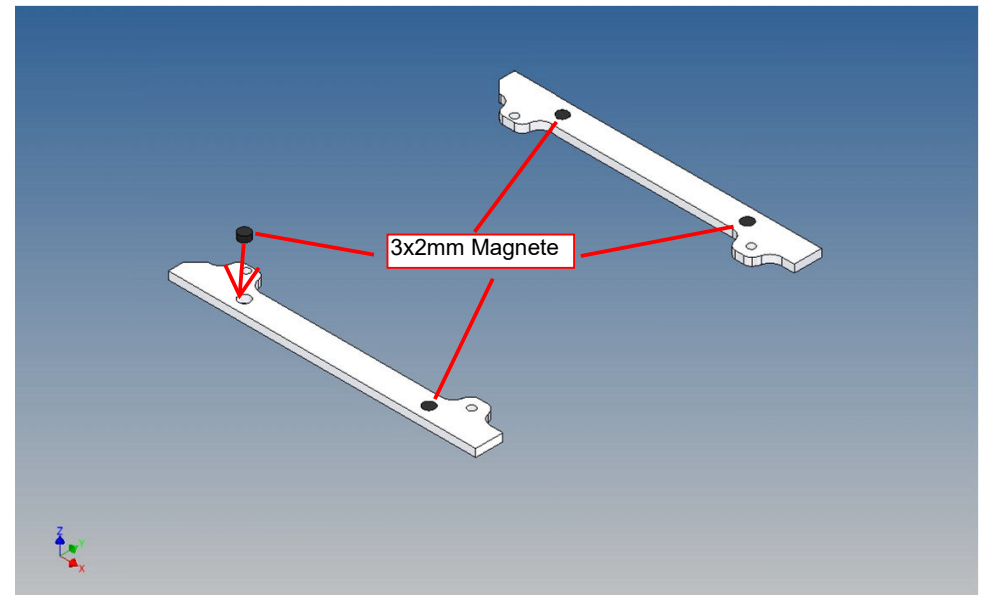
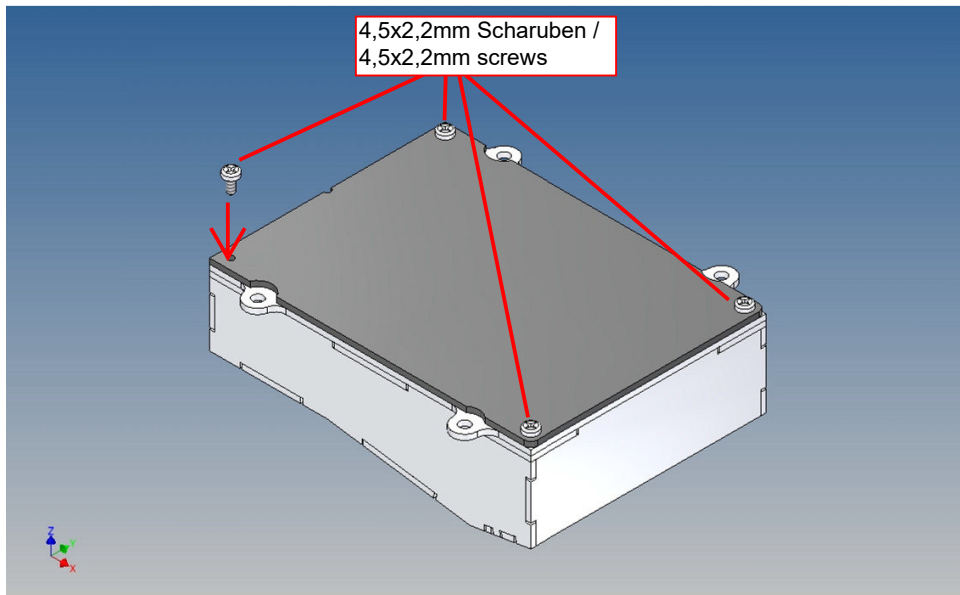
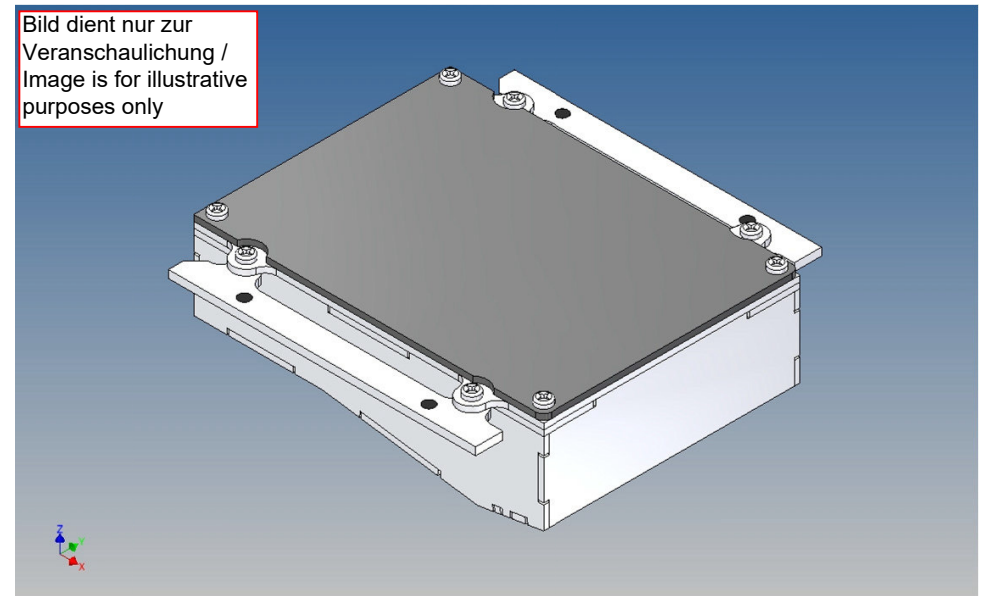
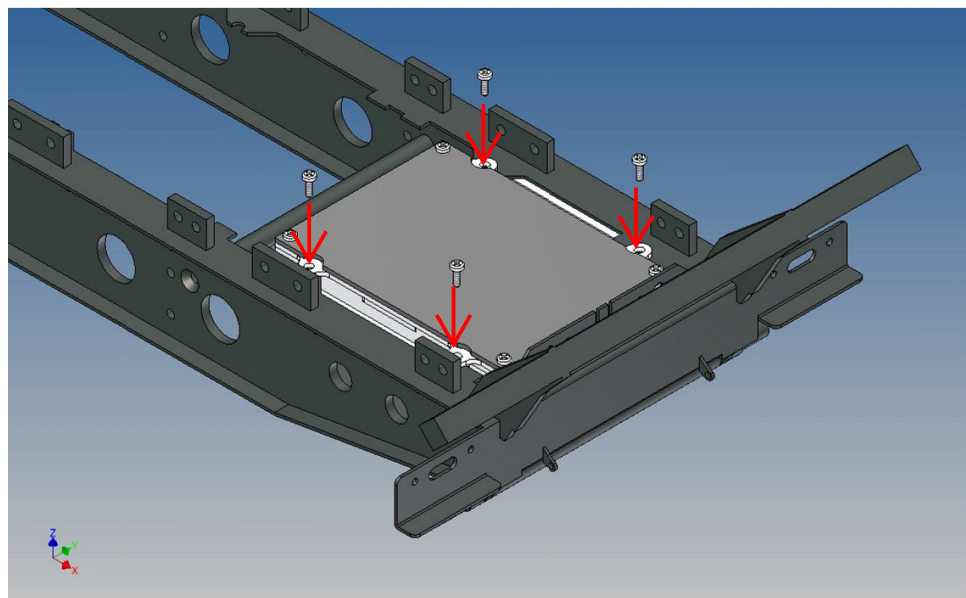
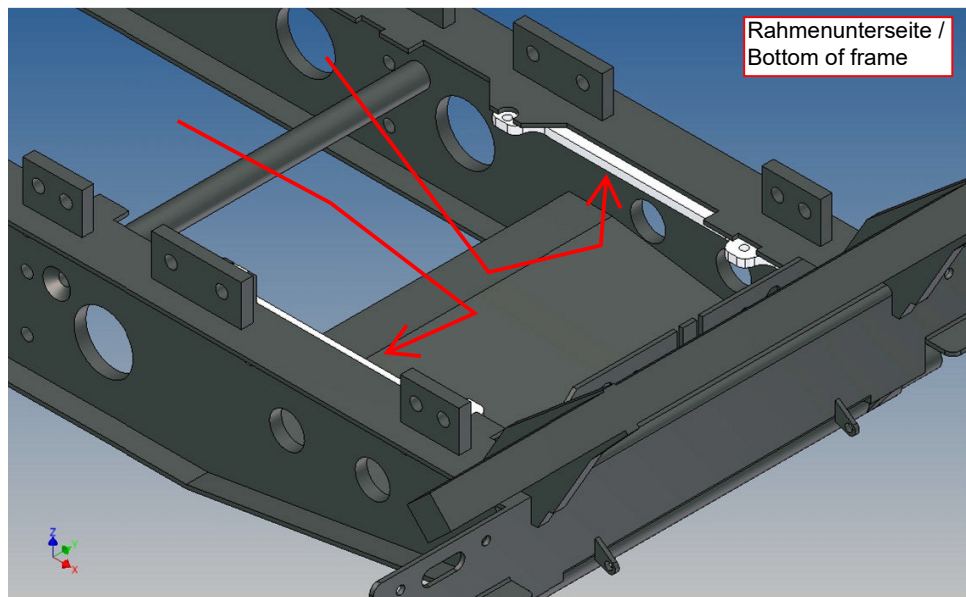


Bild dient nur zur
Veranschaulichung /
Image is for illustrative
purposes only





Annotation:

For technical reasons delivery also magnets with different dimensions may be enclosed.

Good luck and have fun - your MDTechShop team

www.MDTechShop.de

For questions or replacement part requests please send a short e-mail.

Warning:

This is not a toy! It contains small parts! Keep it away from young children!