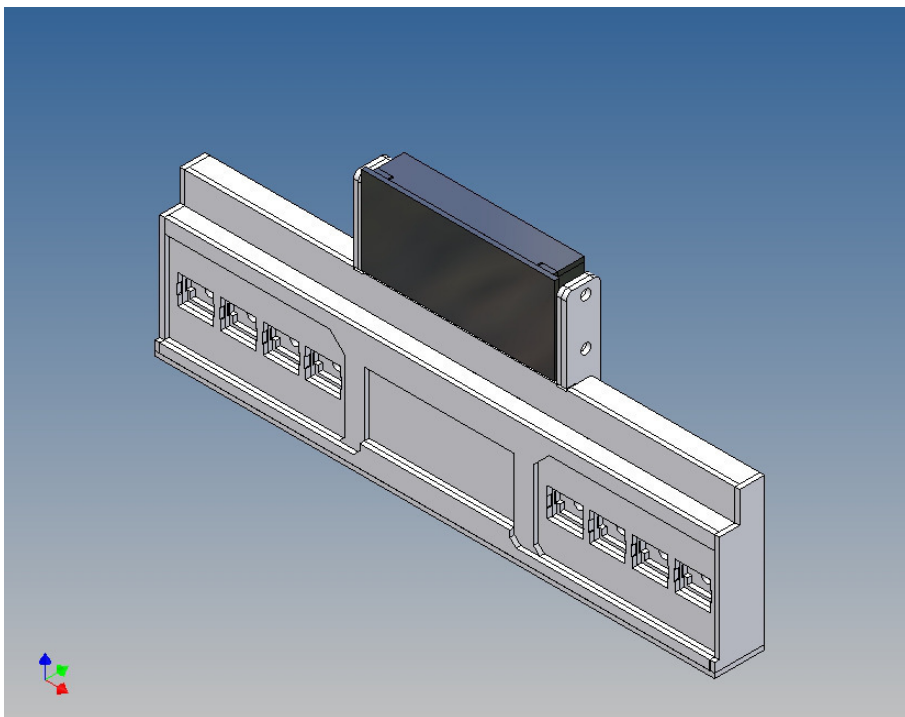


# Assembly Instruction

**Bumper Wedico glasses for  
Tamiya Reefer Trailer (1:14).**

**Best.-Nr.: 2016-9507-W4**



**Version 1.0 – 20.09.2016**

## General Description

This polystyrene-milled parts set for a bumper as an accessory to Tamiya Reefer trailer frame (1: 14) designed.

The bumper can be mounted on the trailer frame.

**For mounting on the frame, the component F10 (end crosshead) must be replaced by the enclosed truss piece**

There are plates for each side four 3mm LEDs attached.

Designed for Wedico glasses measuring 12x10mm (not included).

## Assembly Procedure

Before you put the parts together please read the assembly instructions carefully and pay attention to the assembly sequence and test the fitting accuracy of the parts before gluing them together.

It is helpful to fix the parts at first only on a few points with super-glue and after a check along the edges fully with super-glue or a polystyrene-glue.

The parts are made of polystyrene, if you use super-glue in combination with activator spray, please be aware that the activator spray can destroy polystyrene – because of that you should use it very carefully or use only polystyrene-glue.

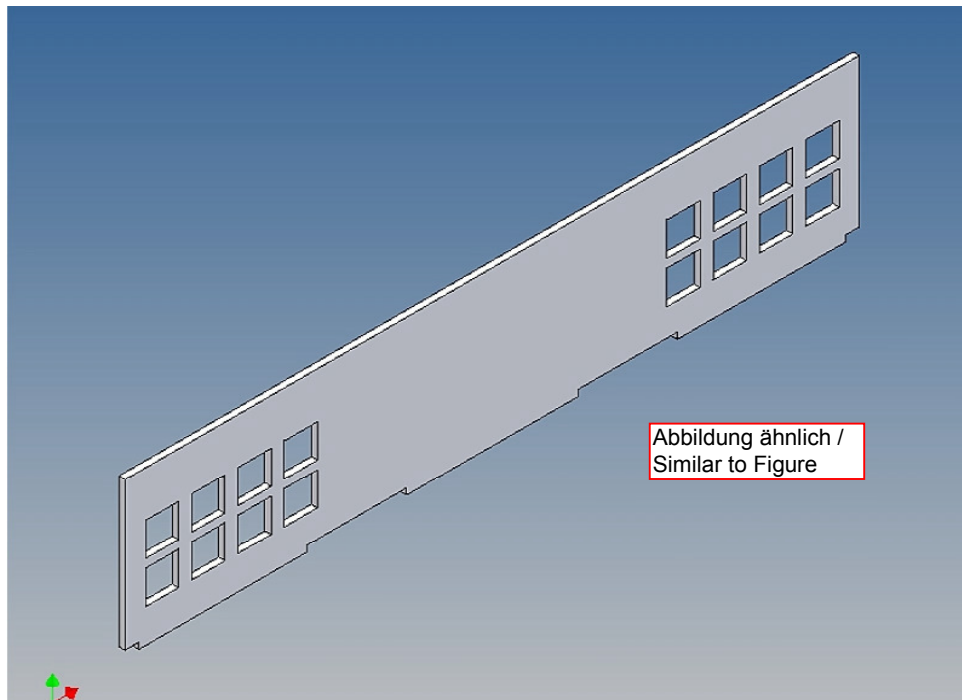
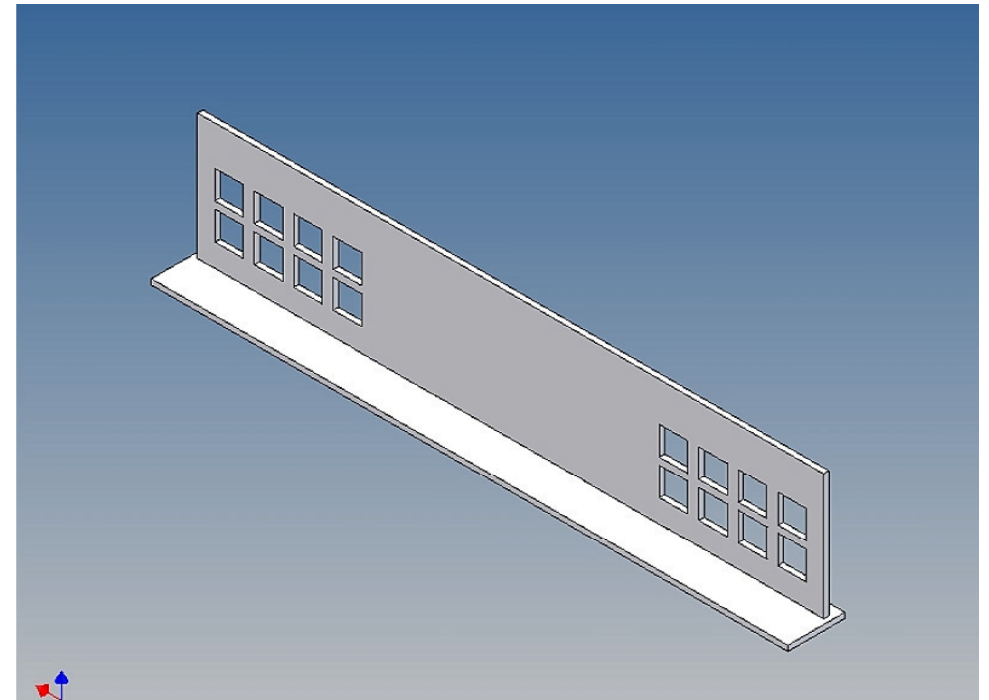
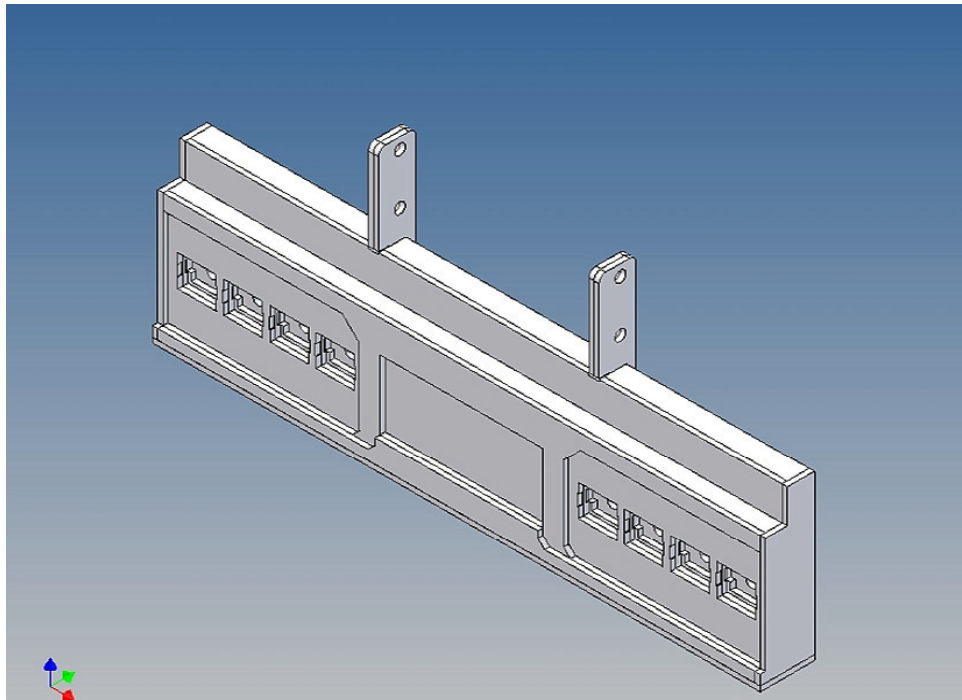
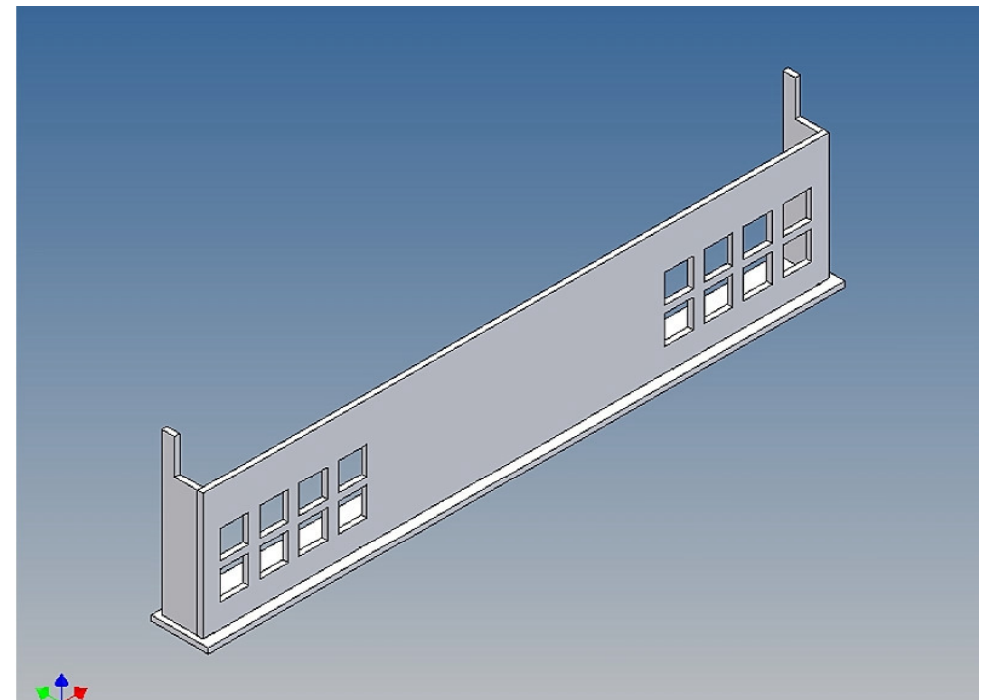
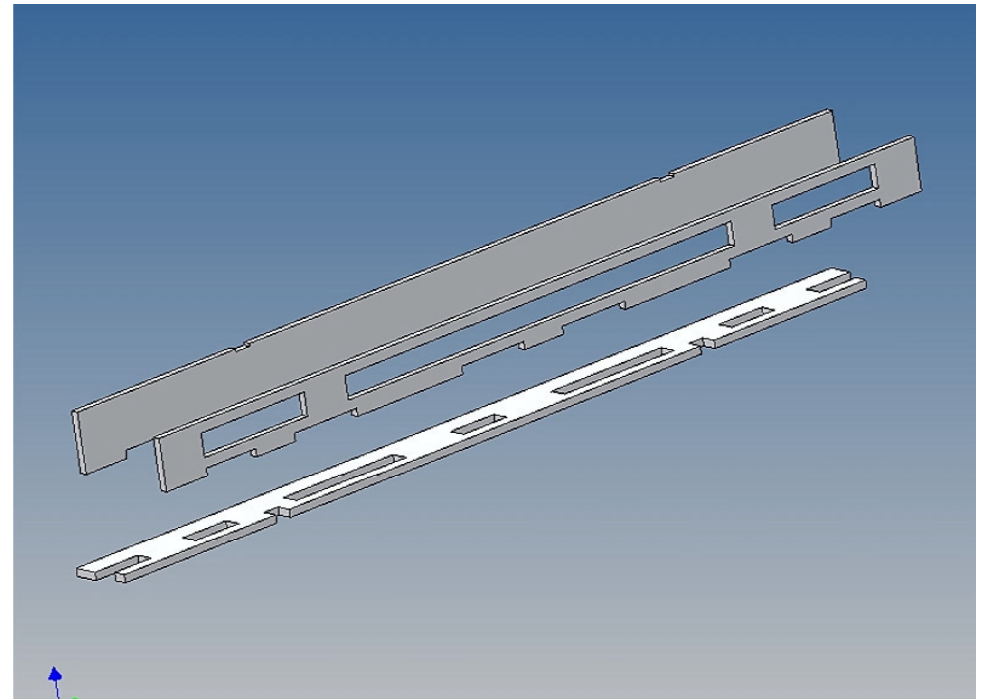
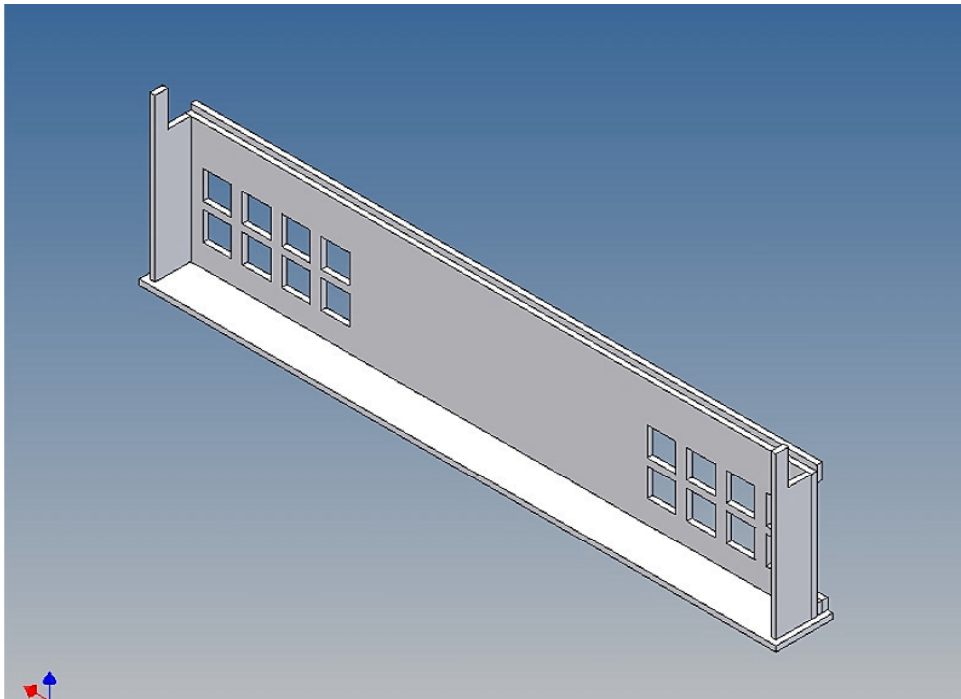
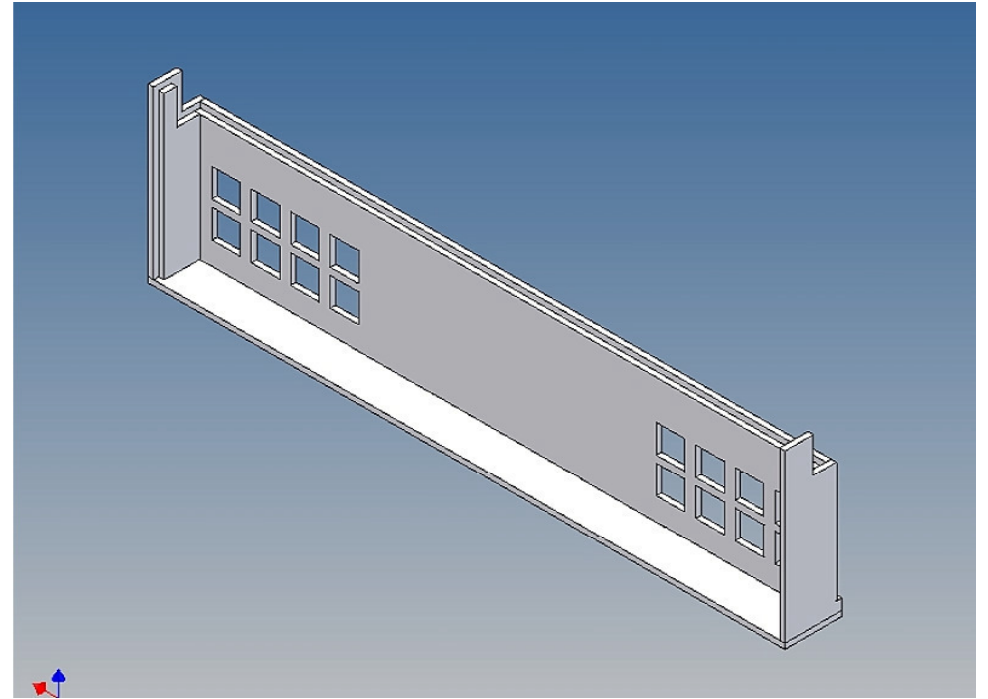
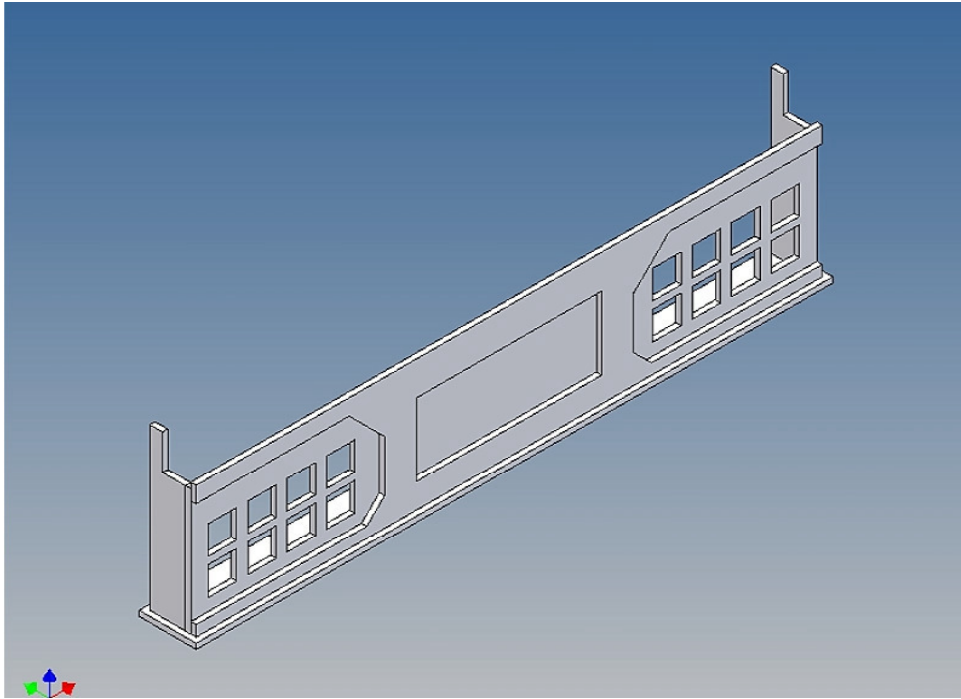
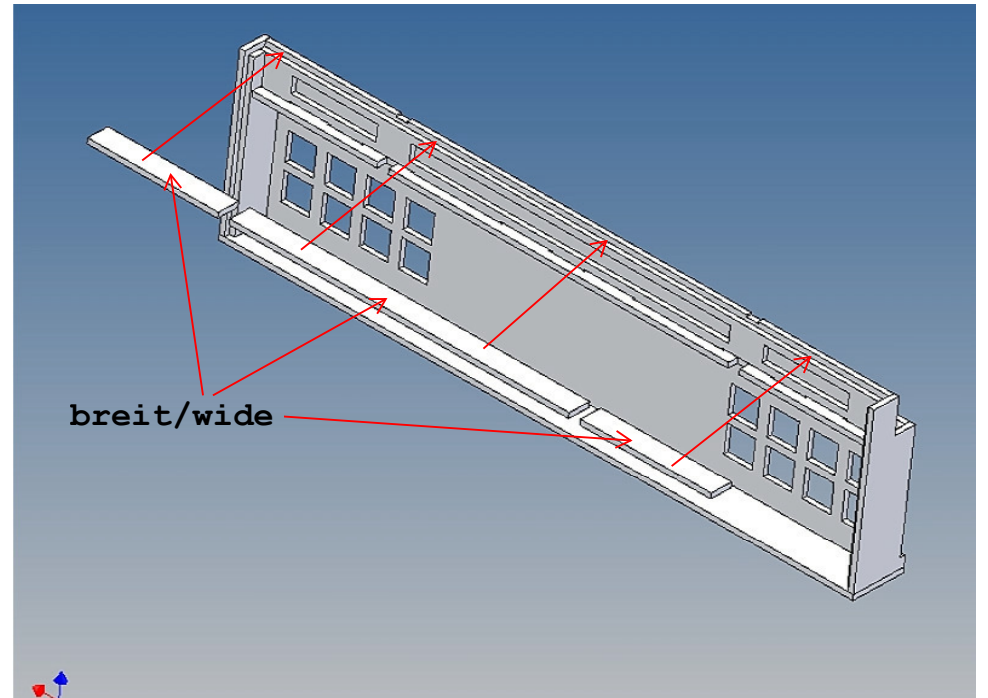
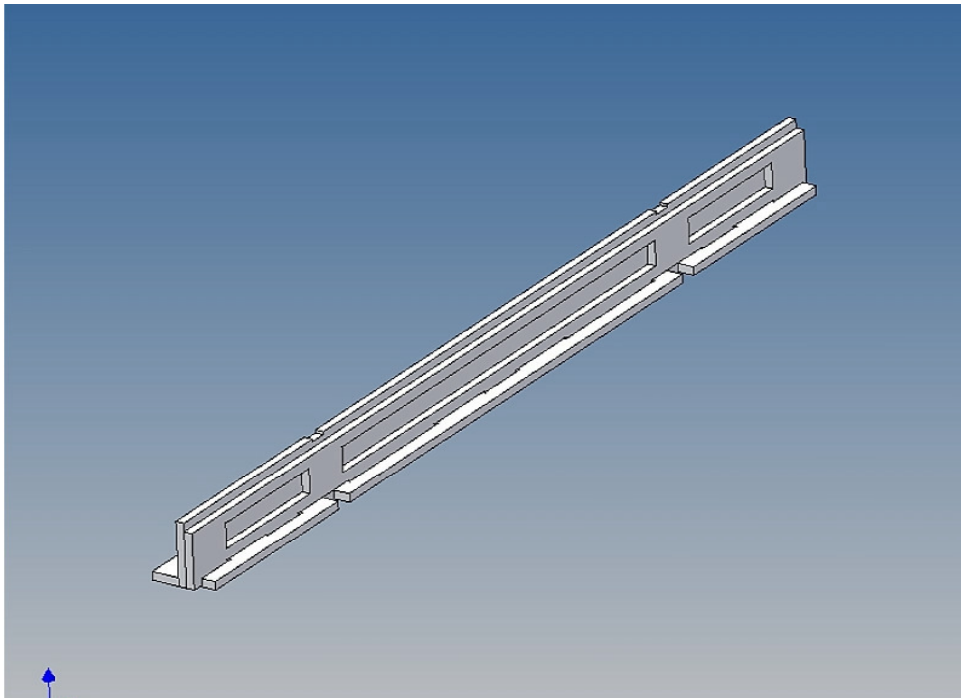
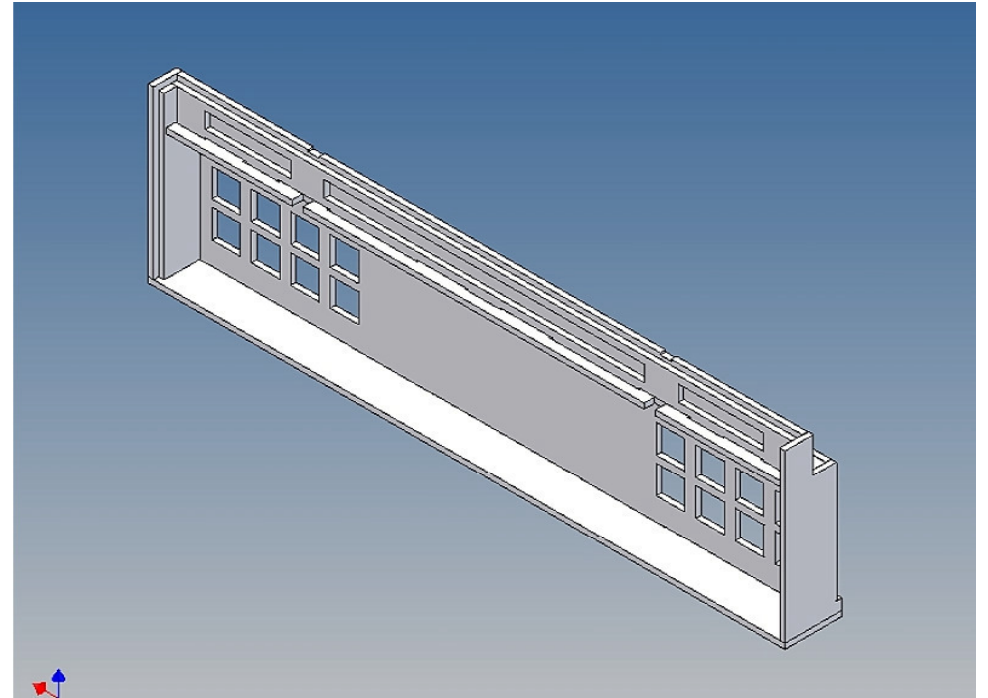
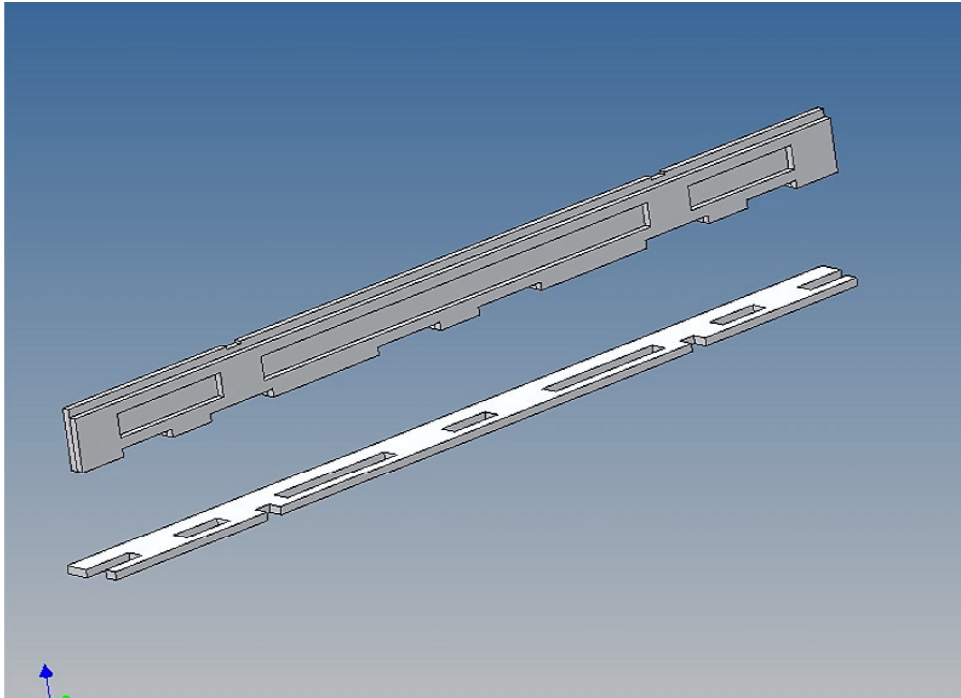


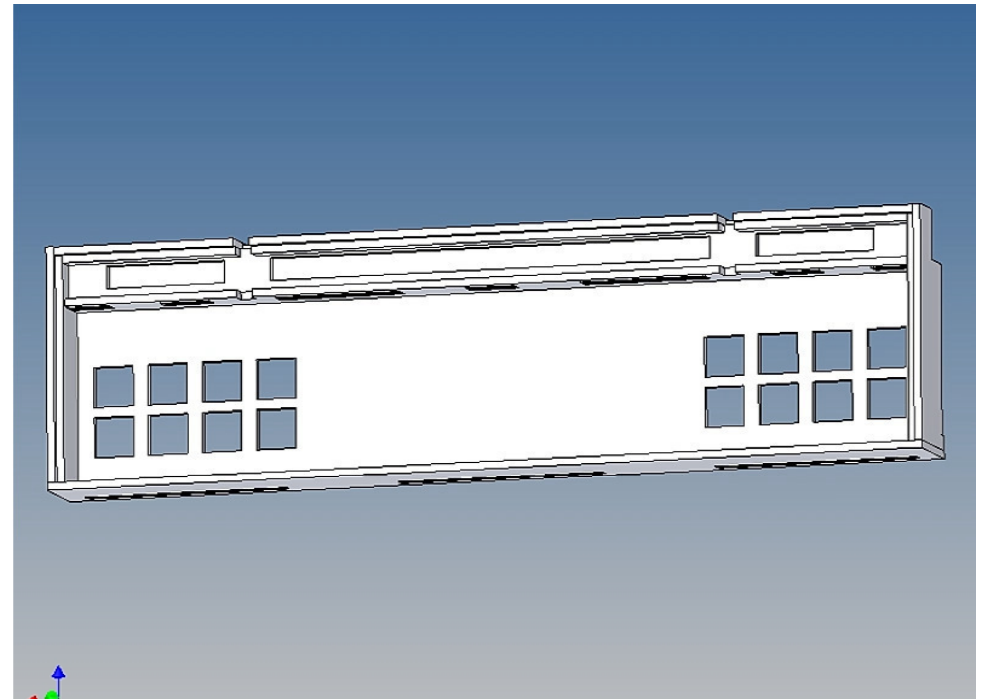
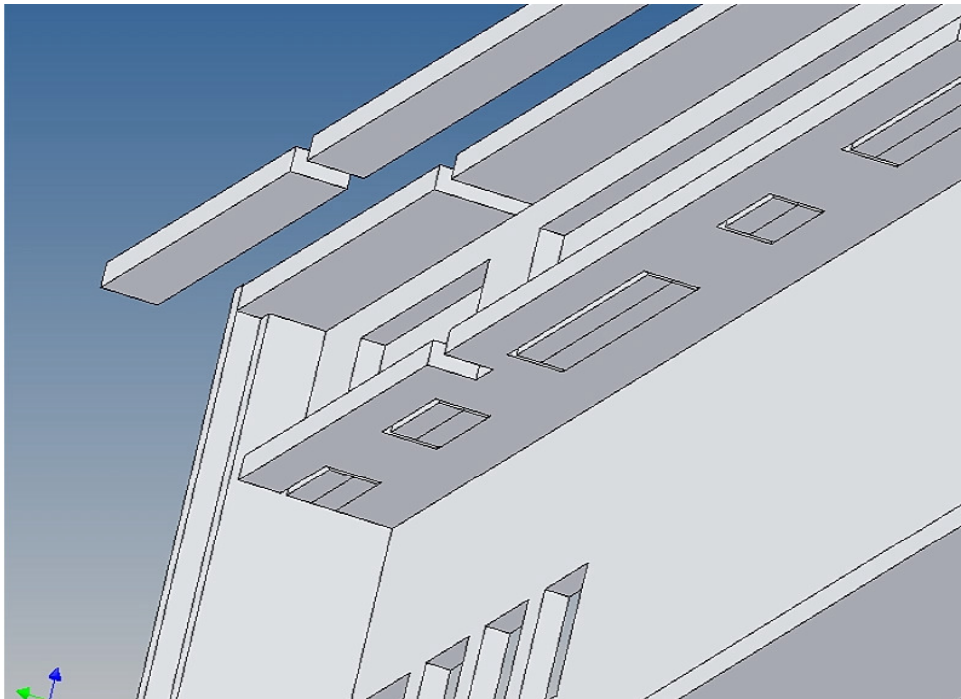
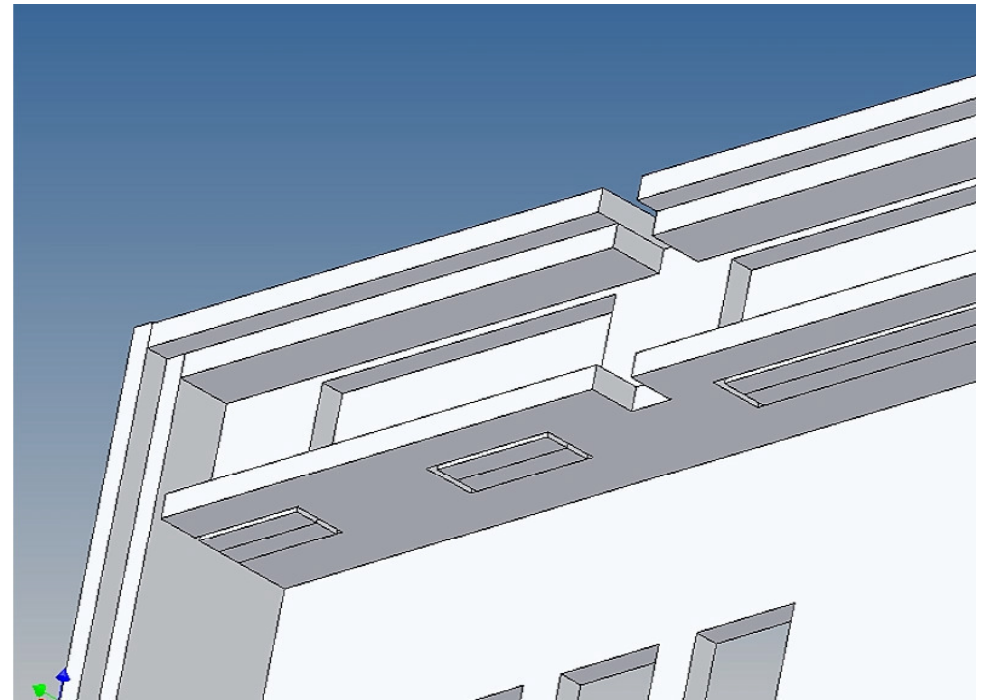
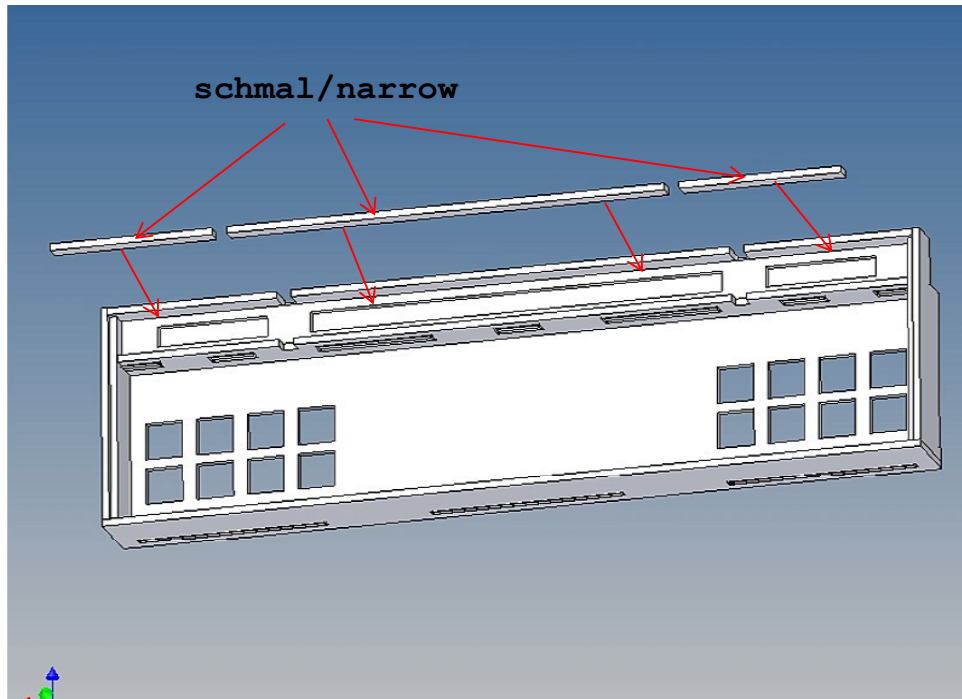
Abbildung ähnlich /  
Similar to Figure

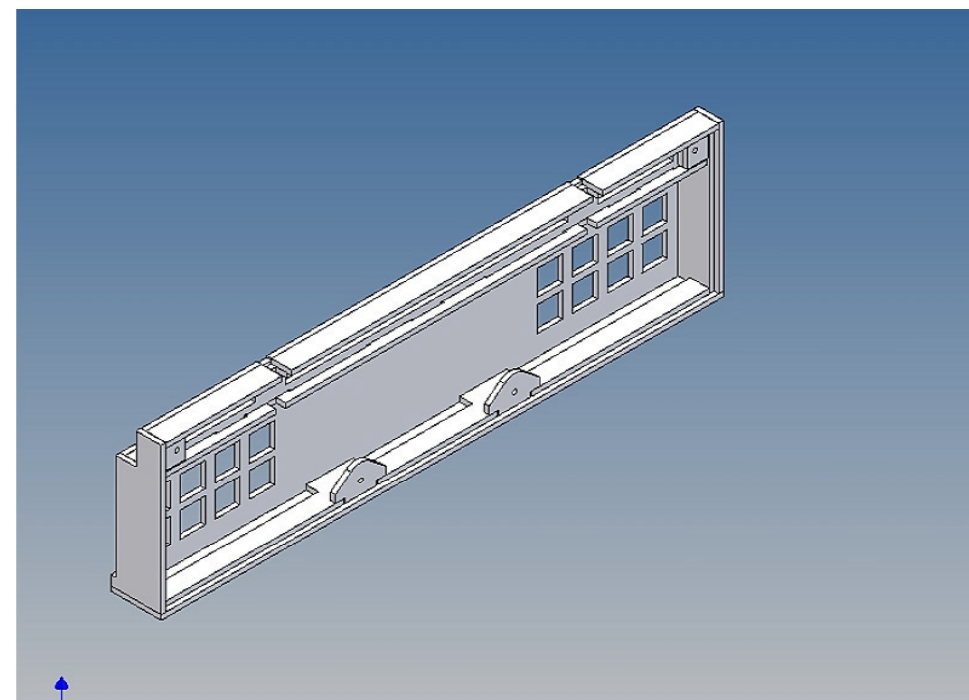
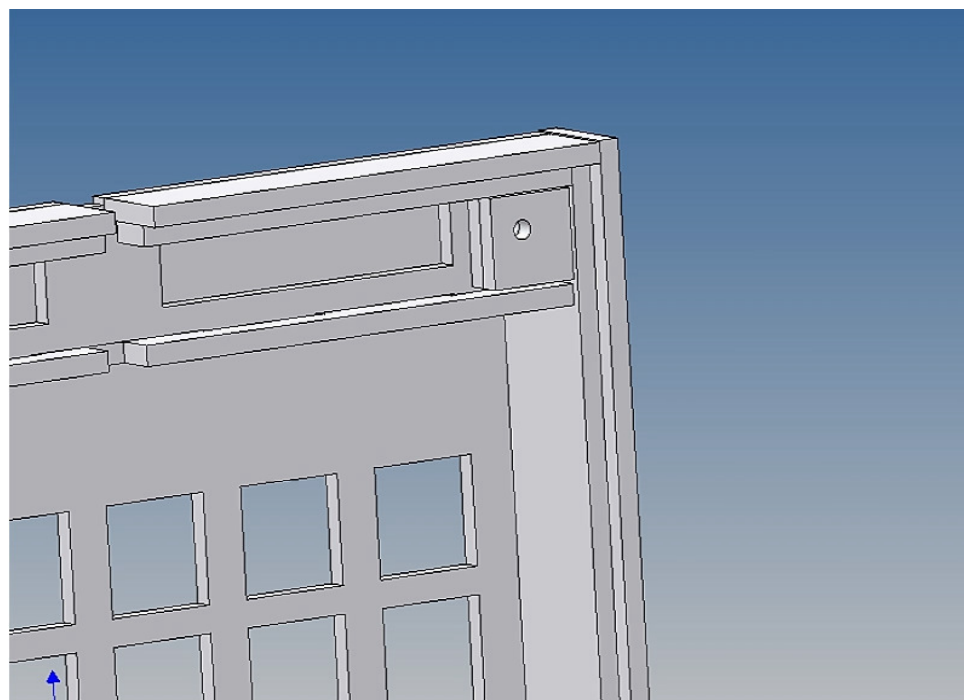
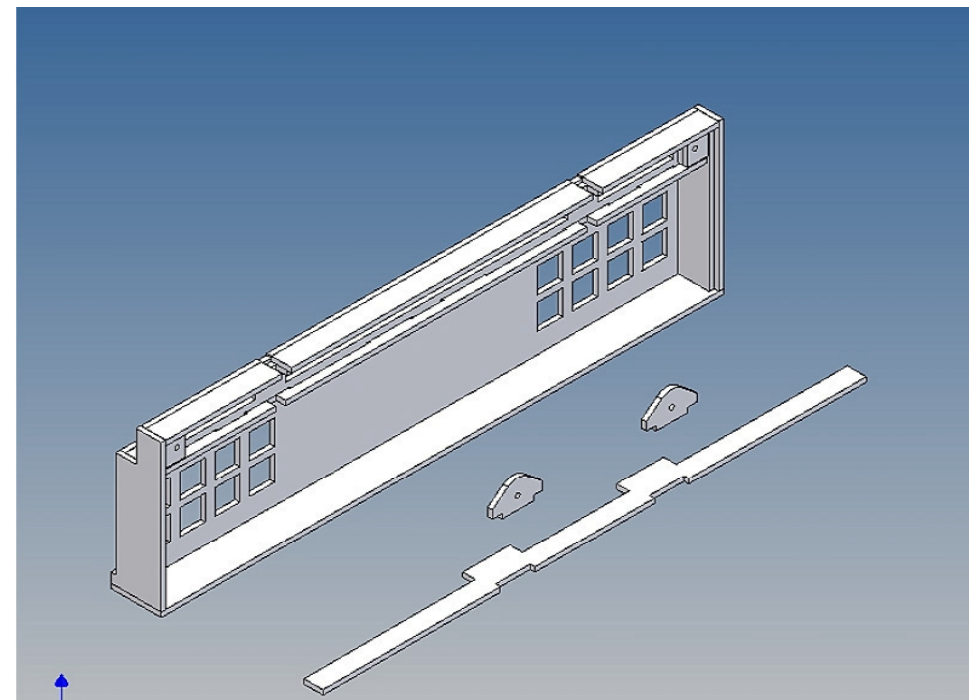
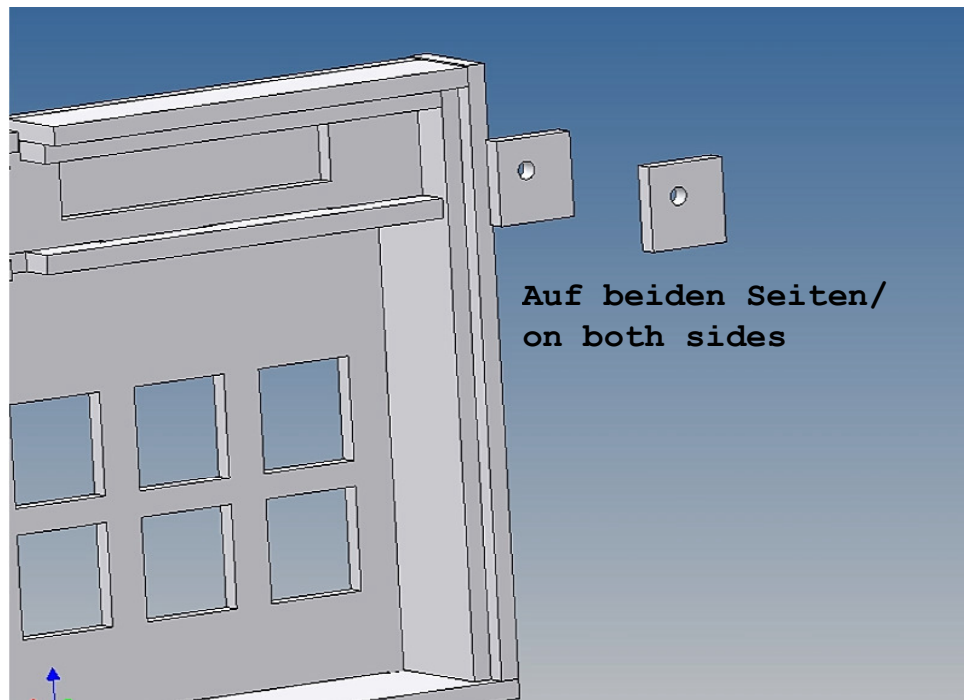


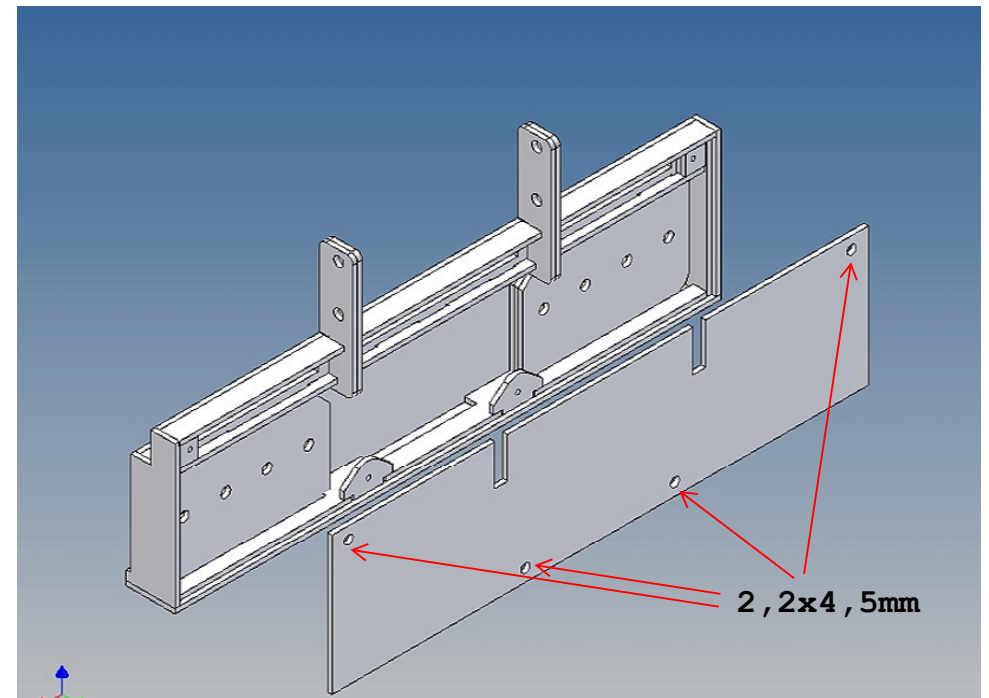
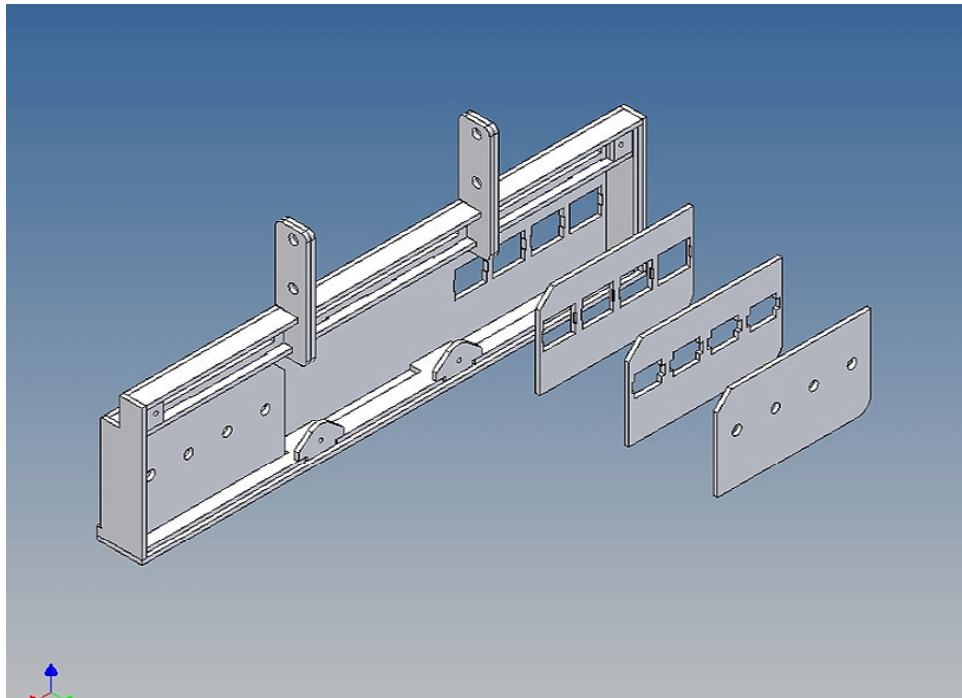
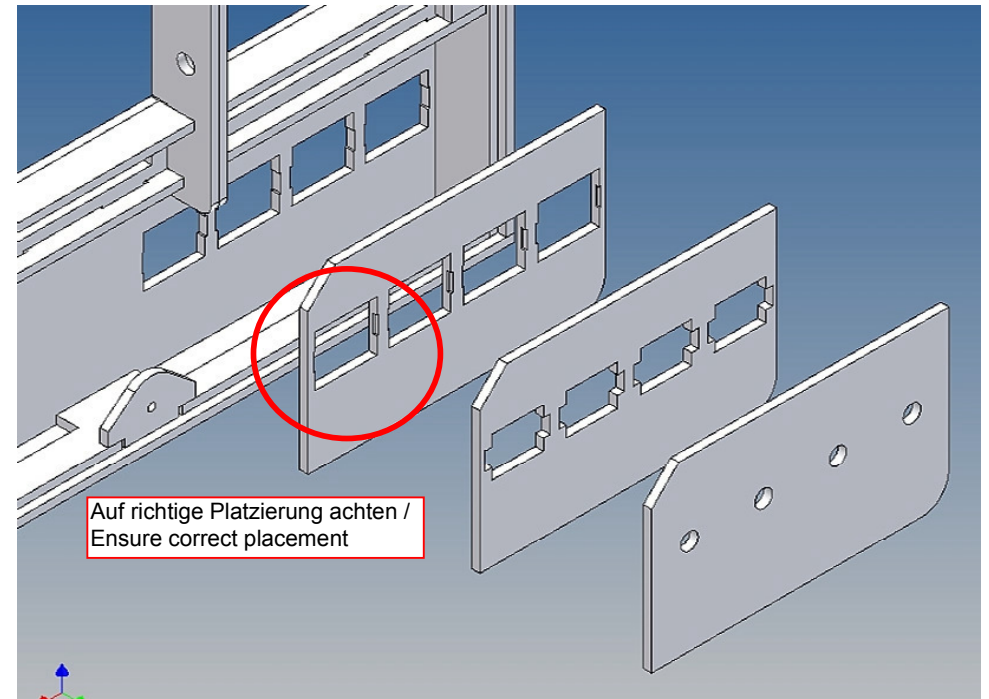
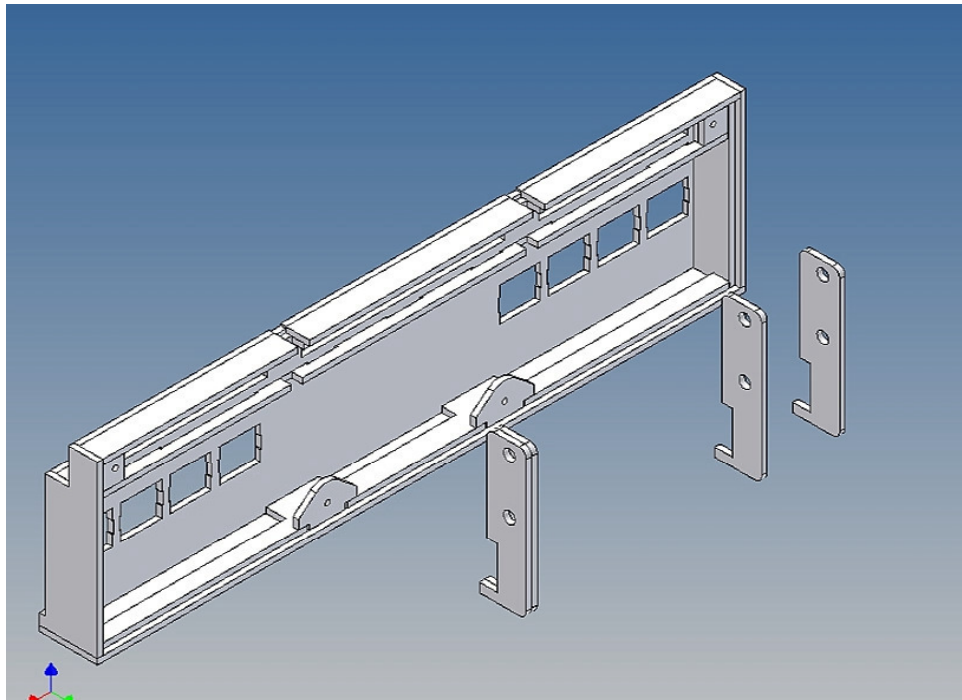




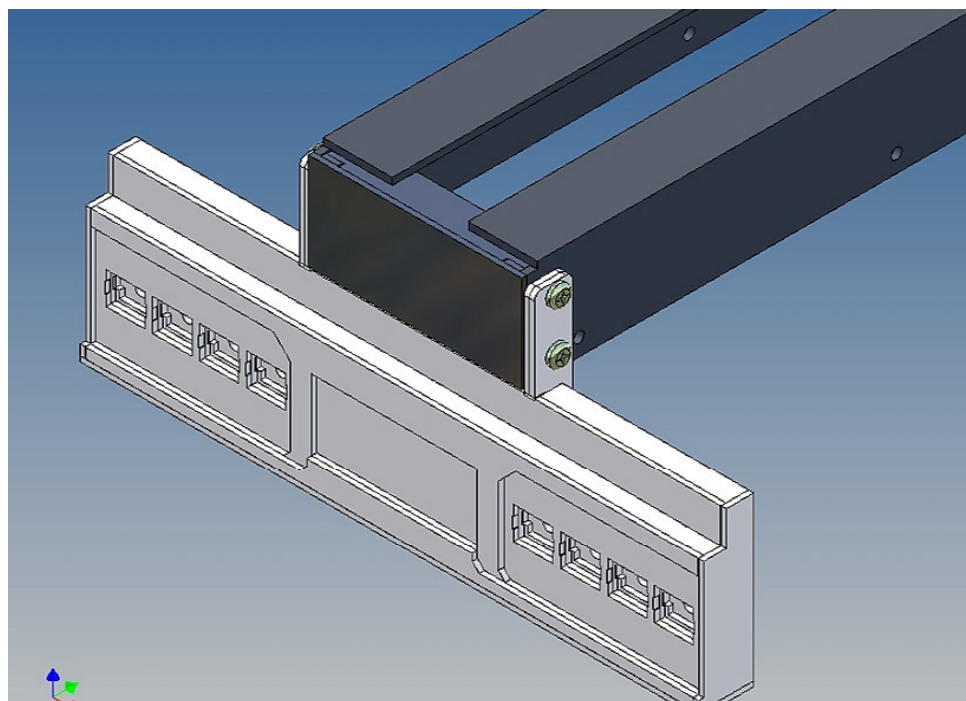
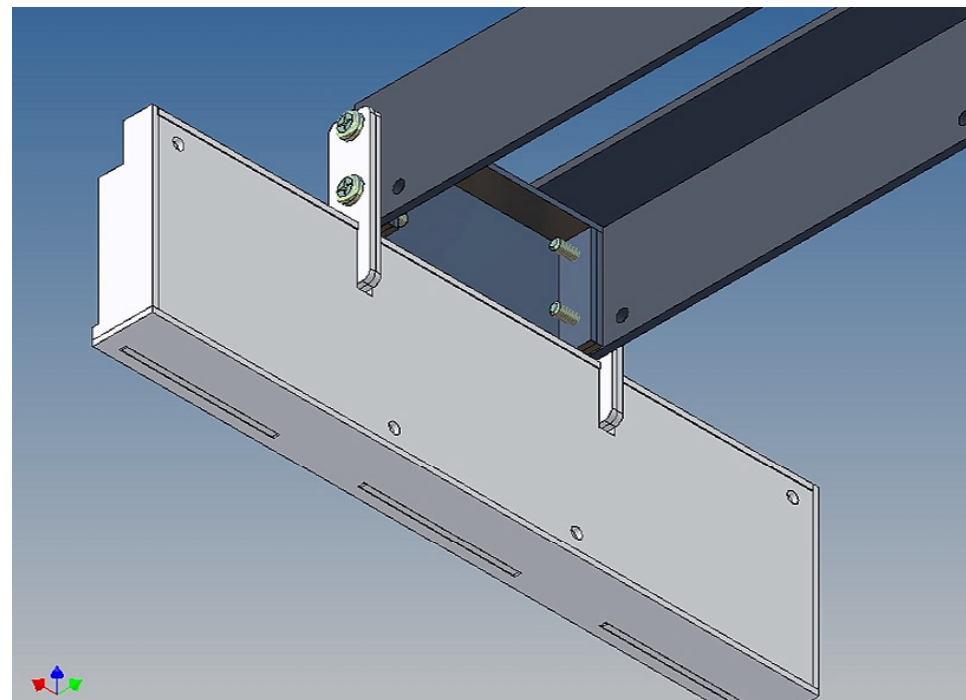
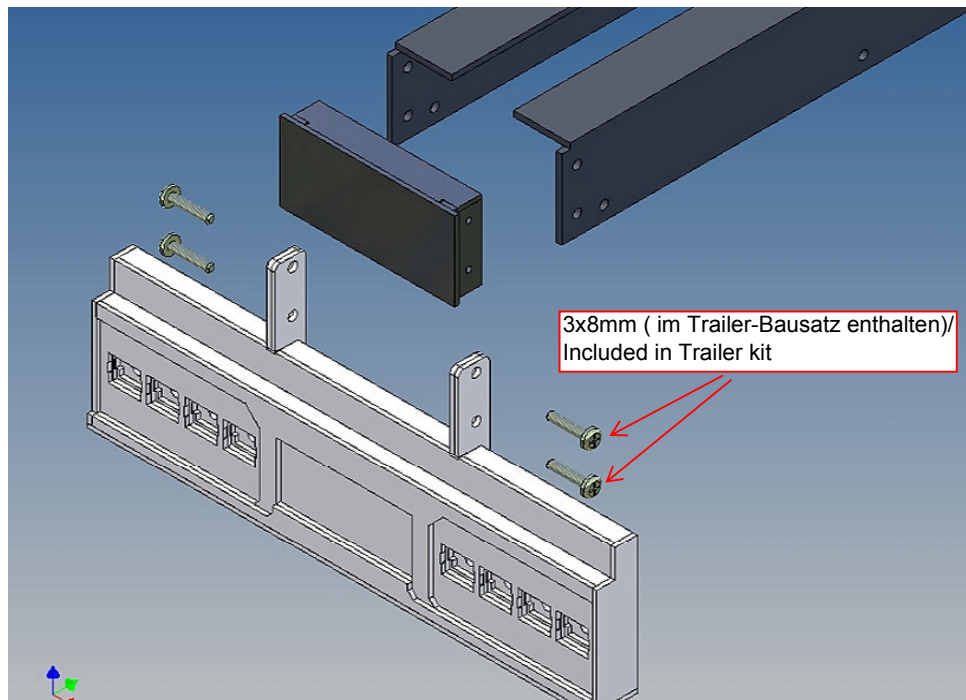














**Annotation:**

Good luck and have fun - your MDTechShop team

[www.MDTechShop.de](http://www.MDTechShop.de)

For questions or replacement part requests please send a short e-mail.

**Warning:**

**This is not a toy! It contains small parts! Keep it away from young children!**