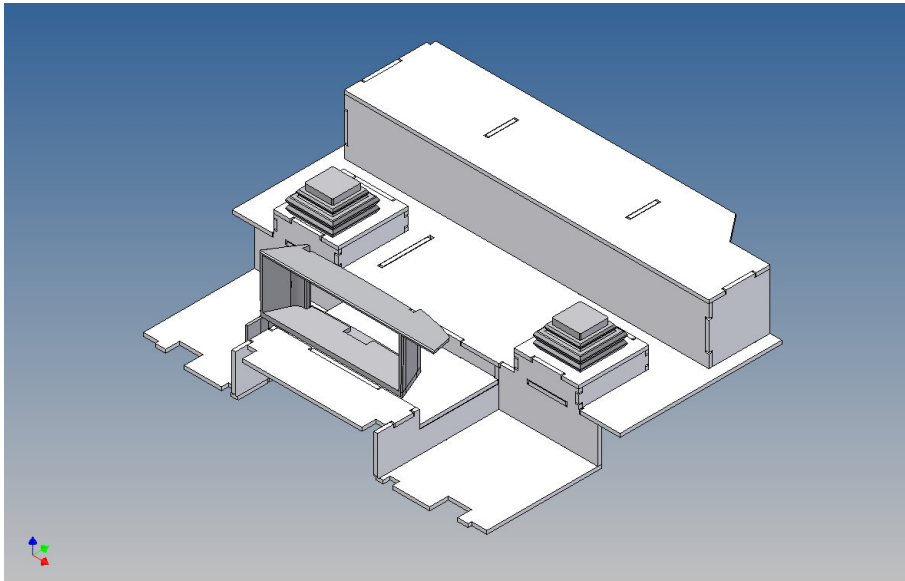


Assembly Instruction

**Driving cap floor assembly kit for
LESU MAN TGS (1:14)
- cab bed + seat mounting brackets -**

Best.-Nr.: 2021-9013-02



Version 1.0 – 29.06.2021

Description

This kit includes parts for a driving cab floor for the LESU MAN TGS (M 1:14).

The floor is fixed at the bottom of the driver's cab and the seat holders are replaced with their own seat consoles. This means that the seat holders do not prevent the use of a driver figure.

An attachment is included to supplement the drawer system in the dashboard.

The assembly

Before assembling, please familiarize yourself with the order of parts, location and fit of the individual parts.

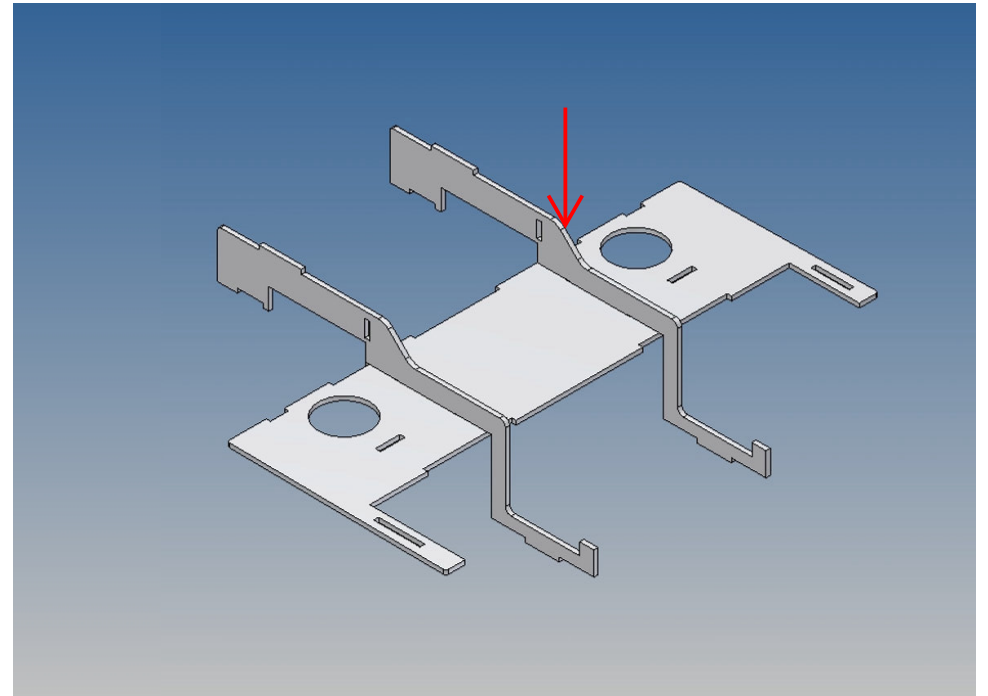
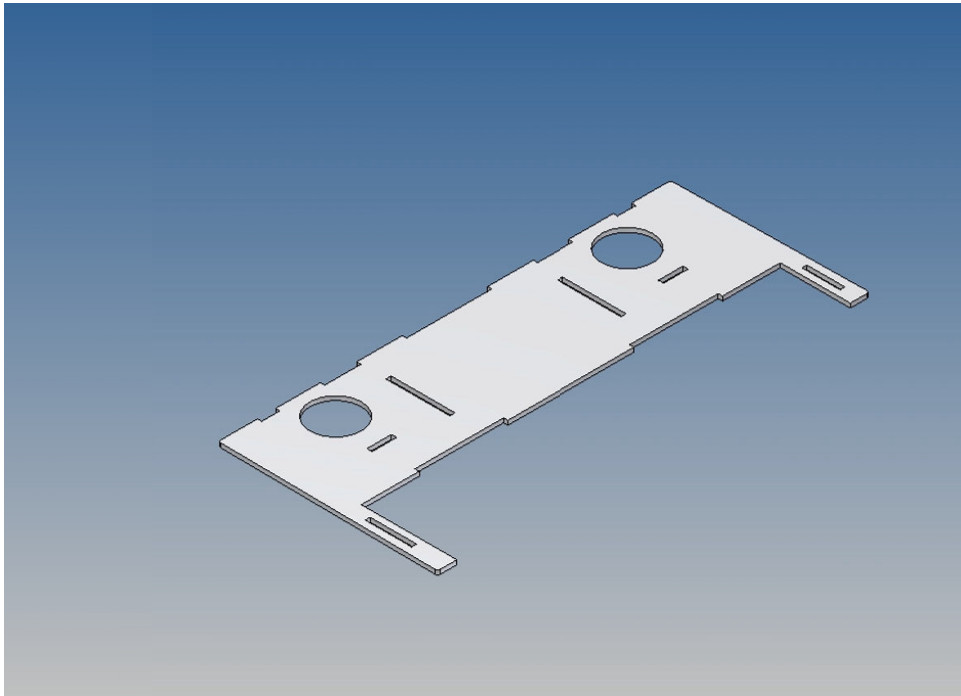
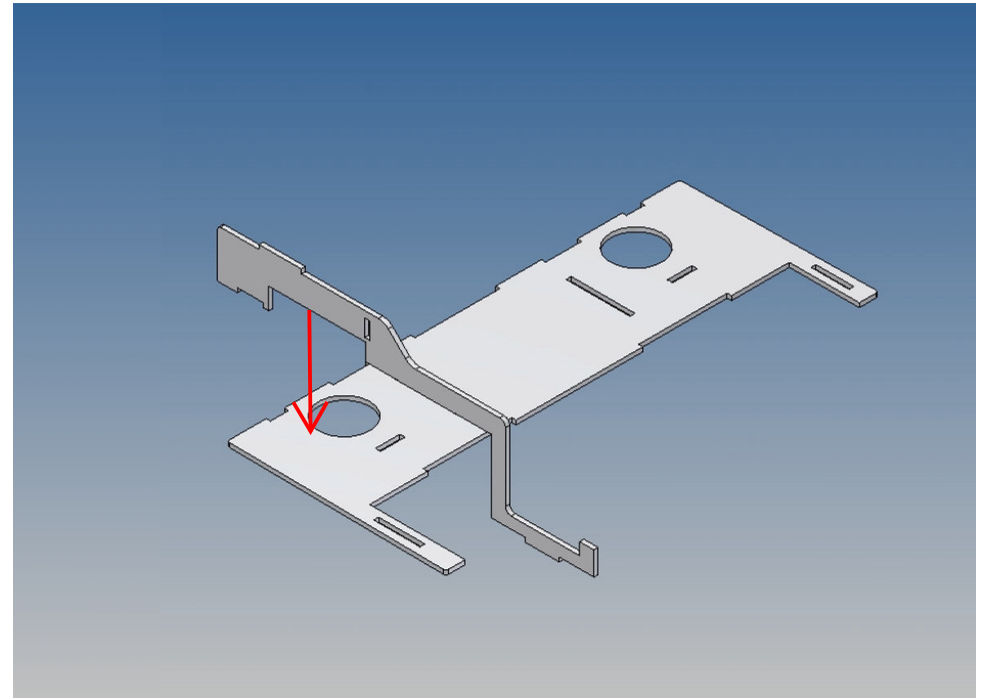
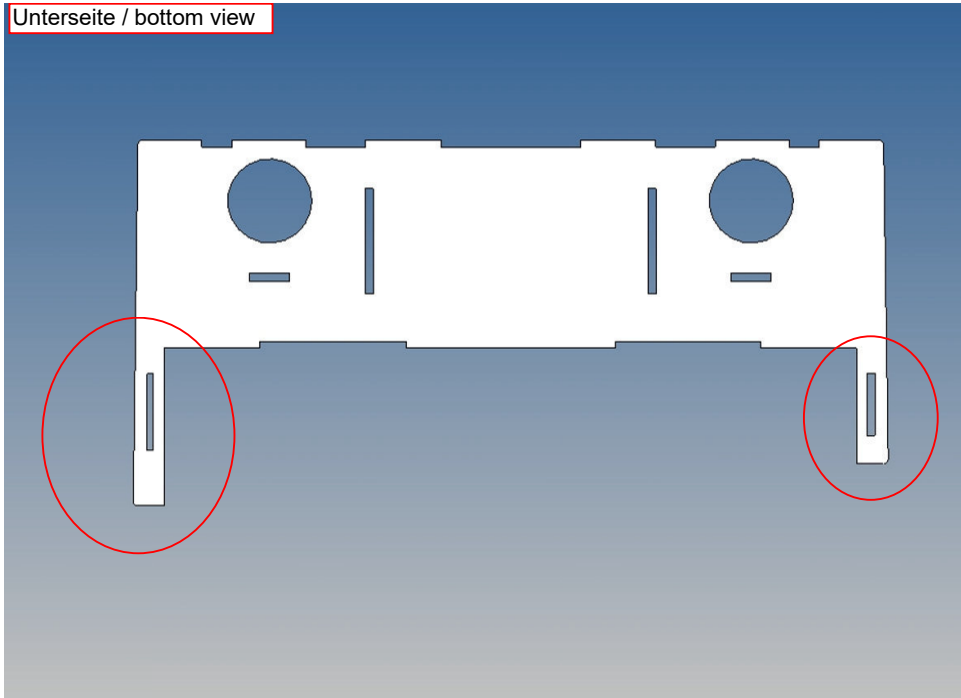
When assembling, it has proven itself to first fix the individual parts only at certain points with superglue and then to completely glue the finished overall structure along the joint edges with model building plastic glue.

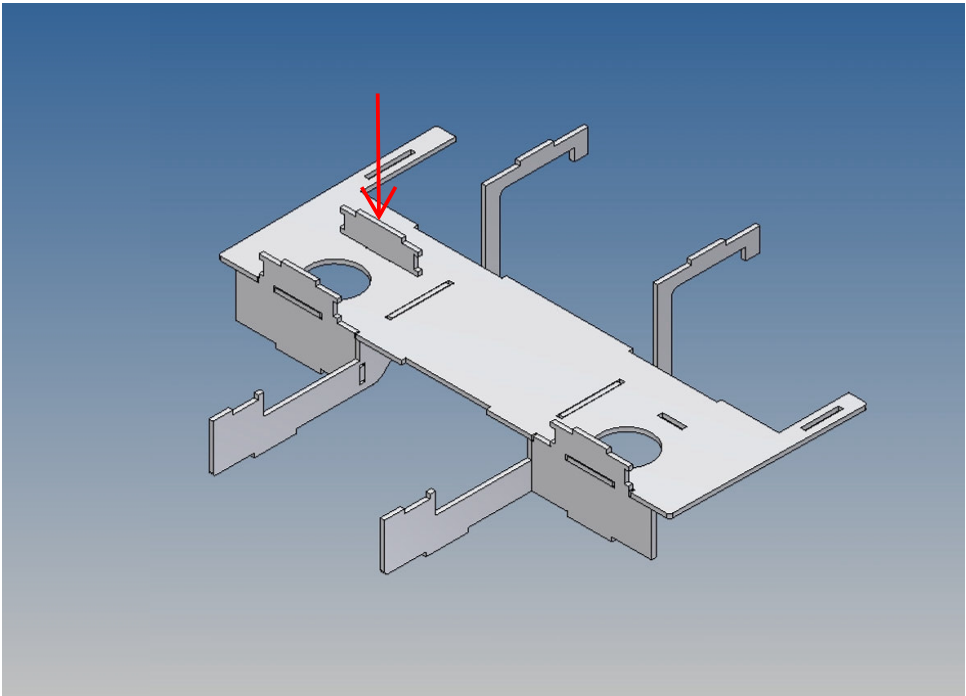
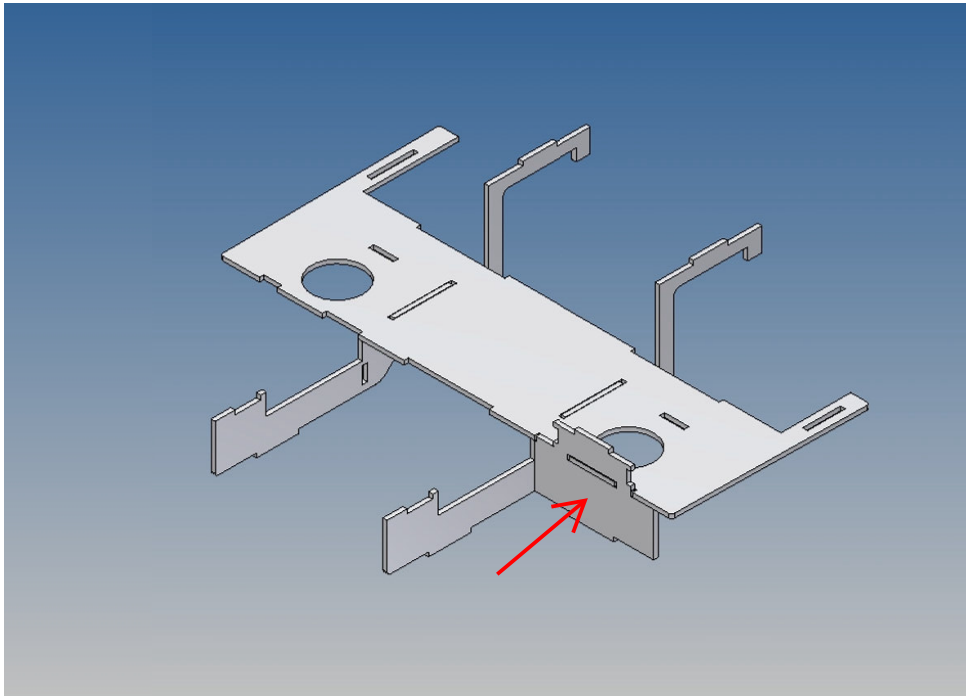
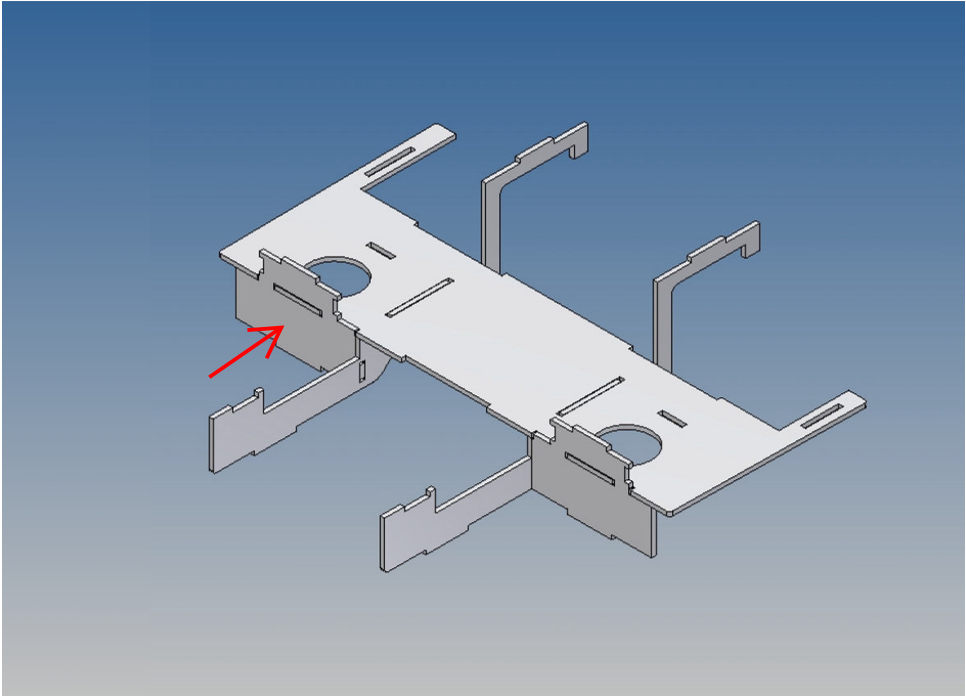
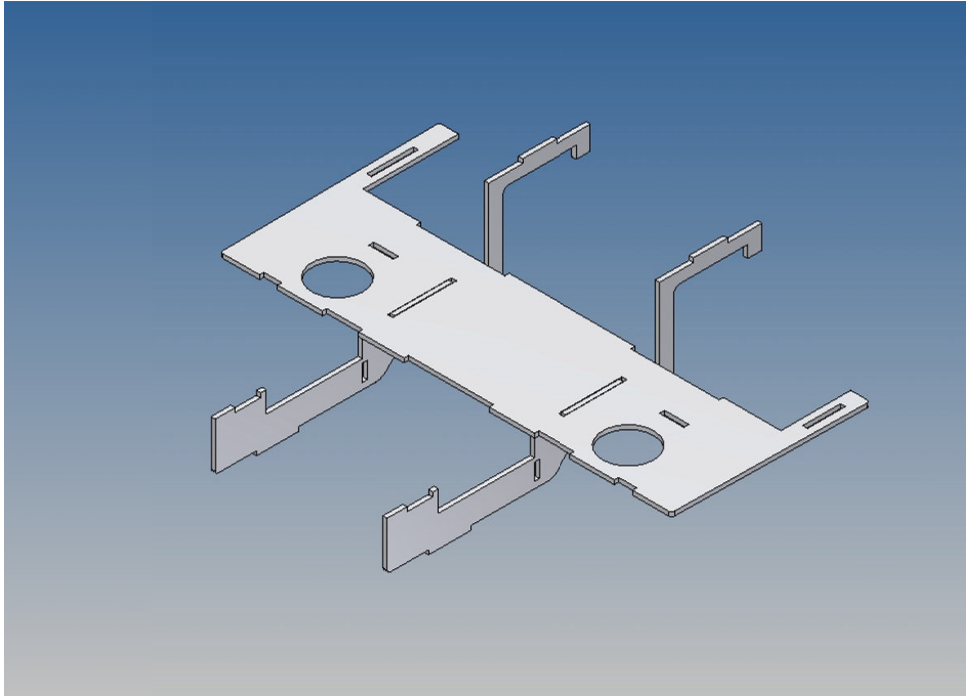
Since the components are made of polystyrene, use activator spray as sparingly as possible, or if in doubt, do not use it. Polystyrene briefly becomes soft and brittle when exposed to activator sprays.

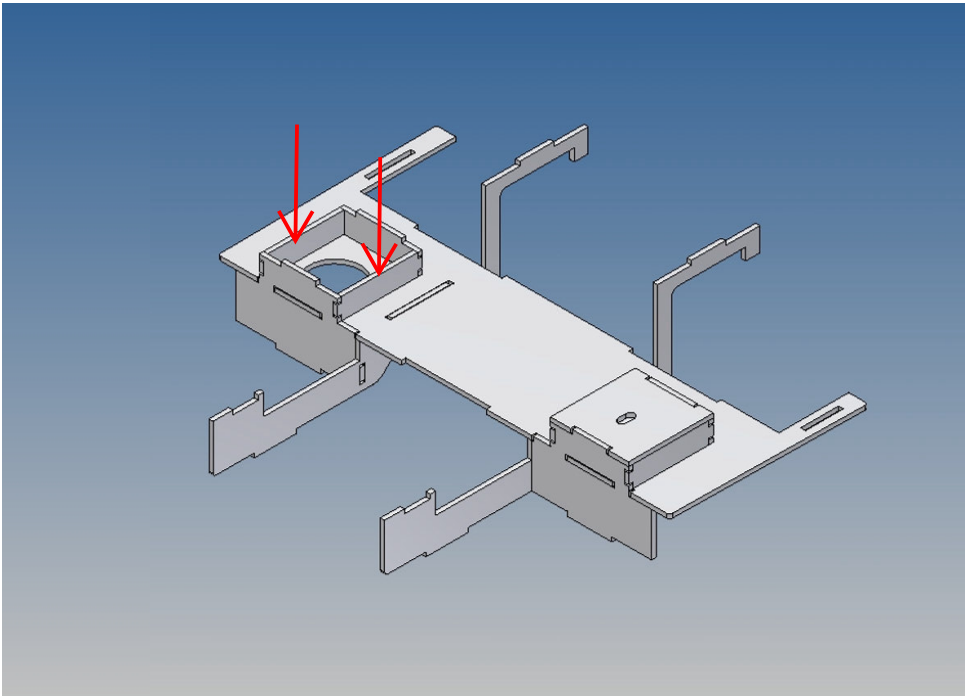
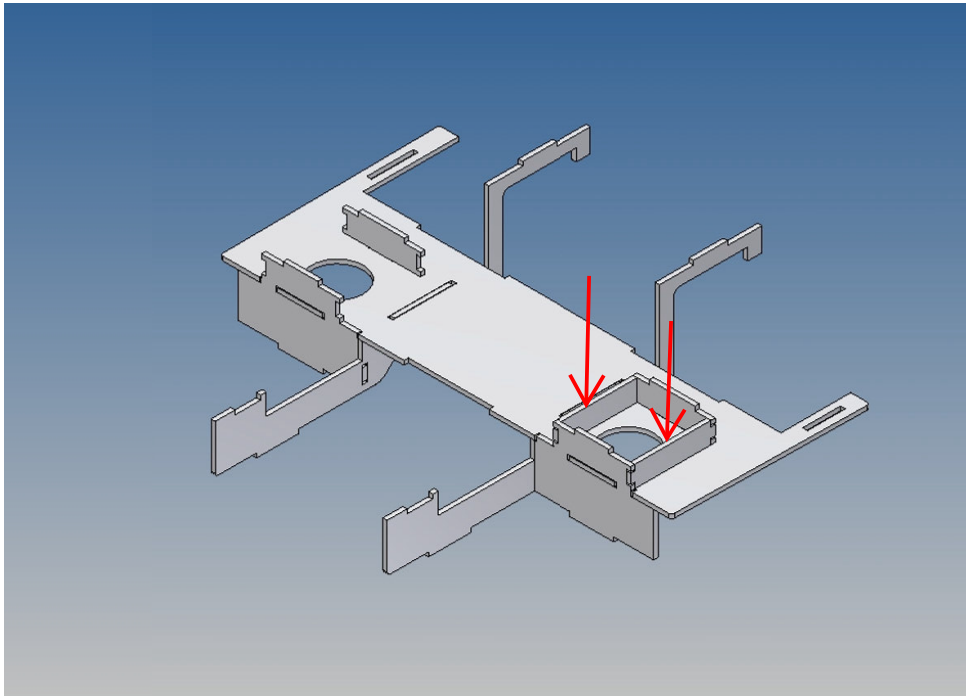
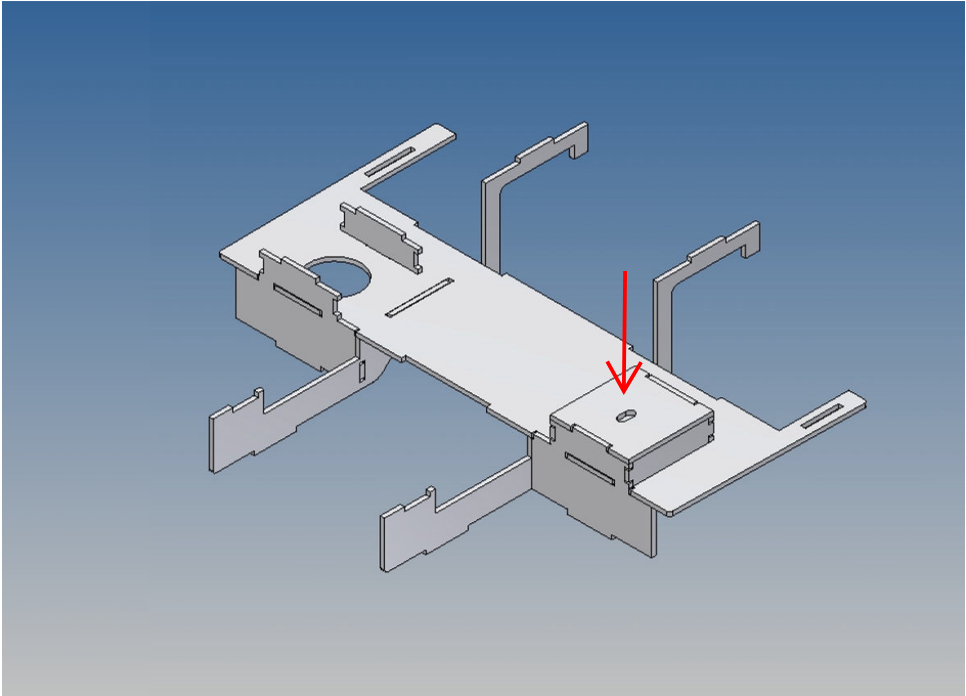
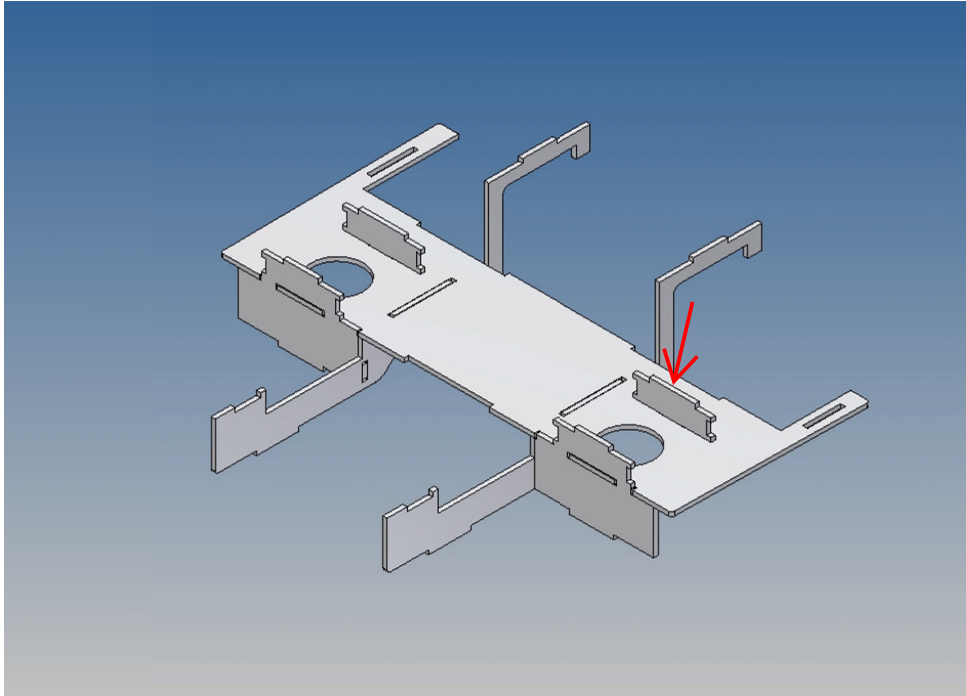
We recommend the use of model-making plastic glue for complete bonding.

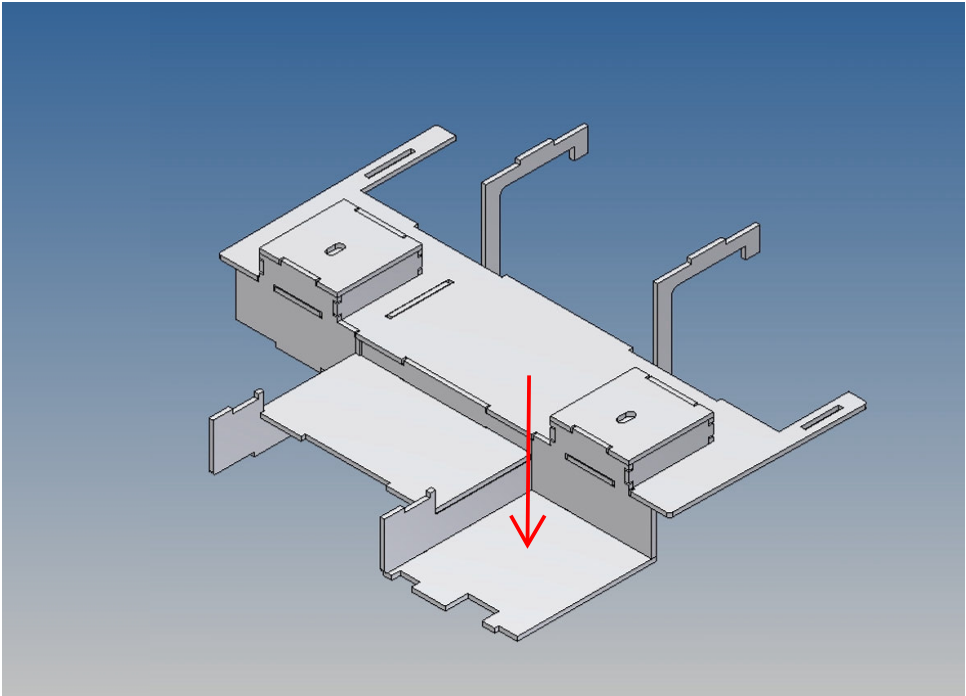
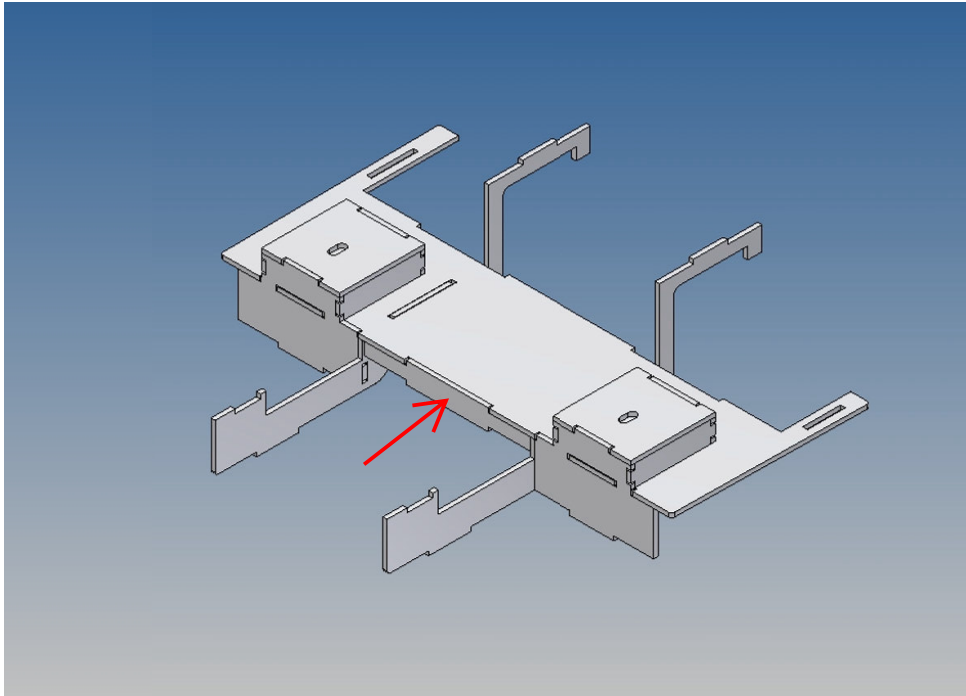
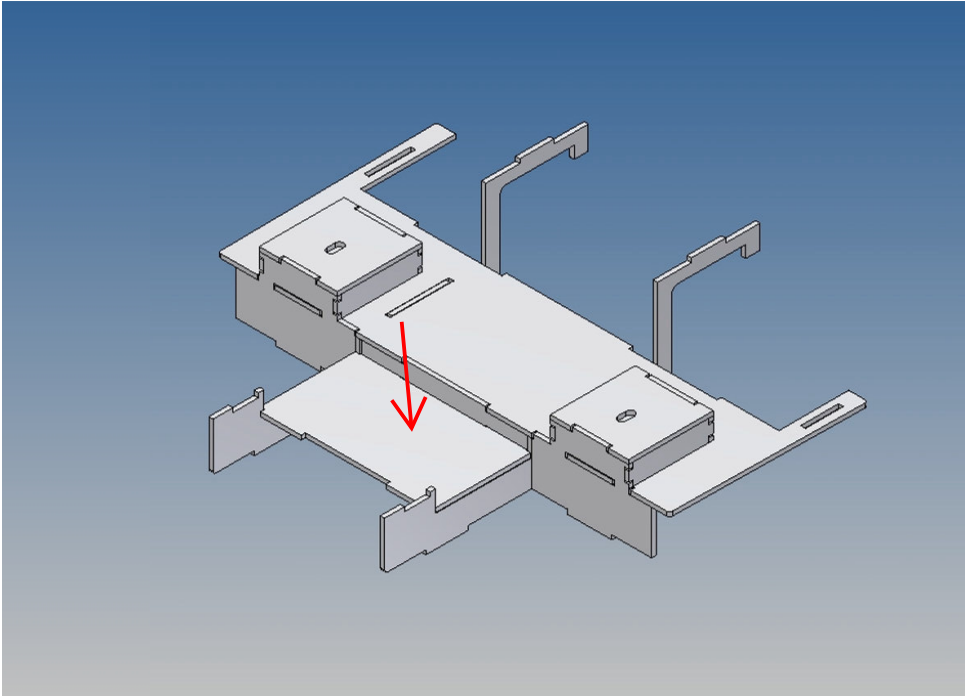
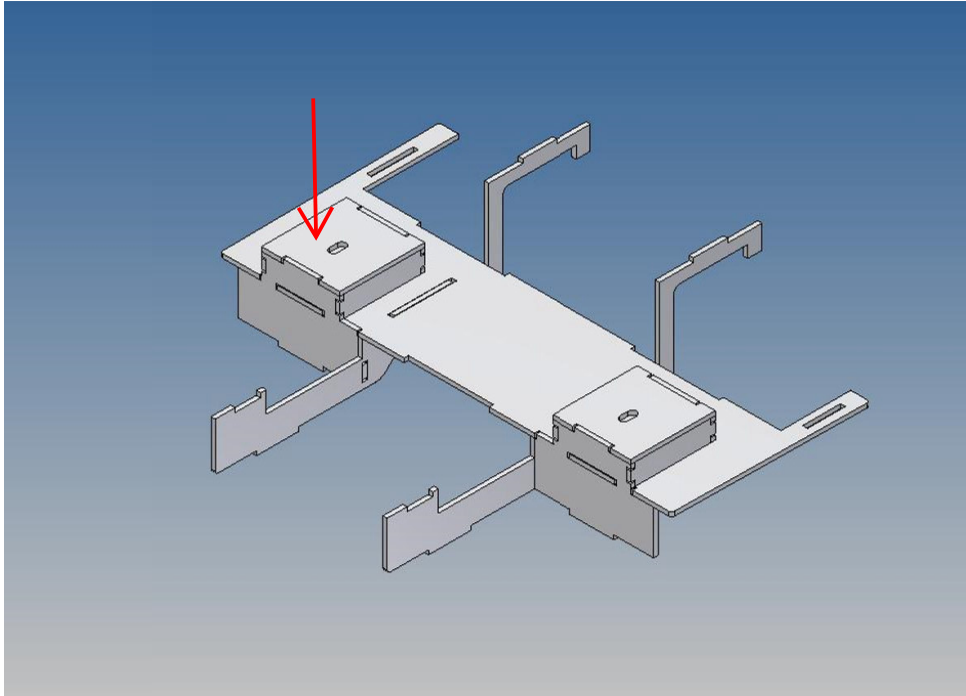
Annotation:

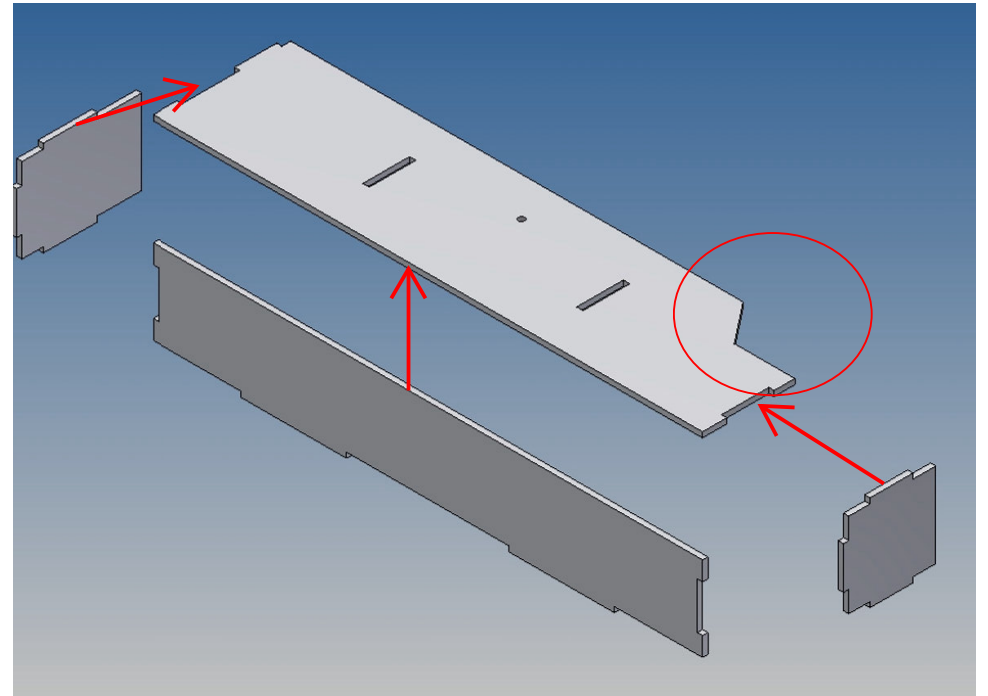
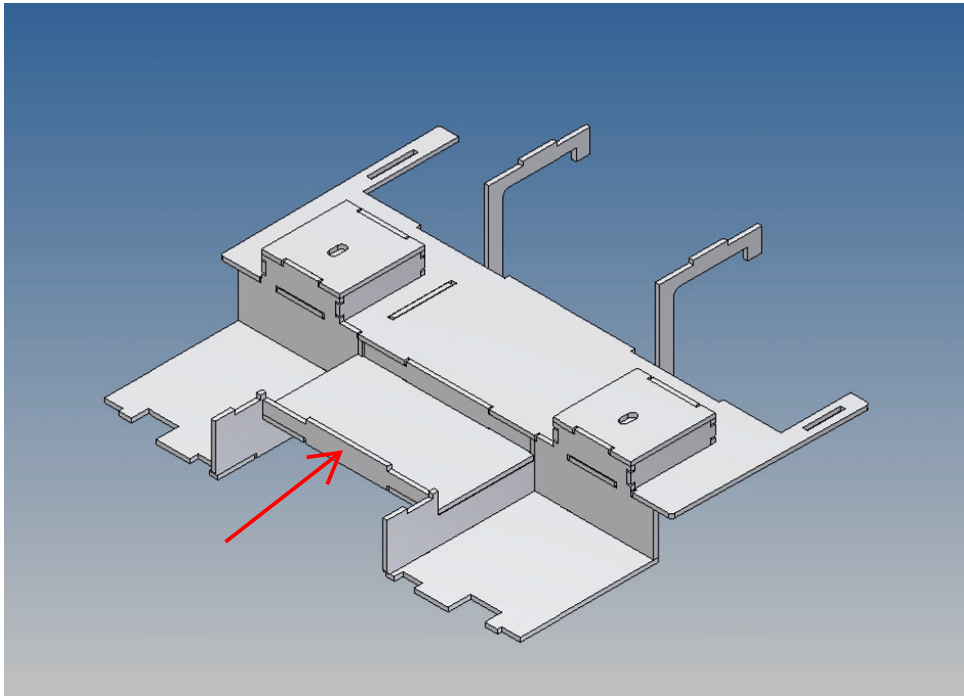
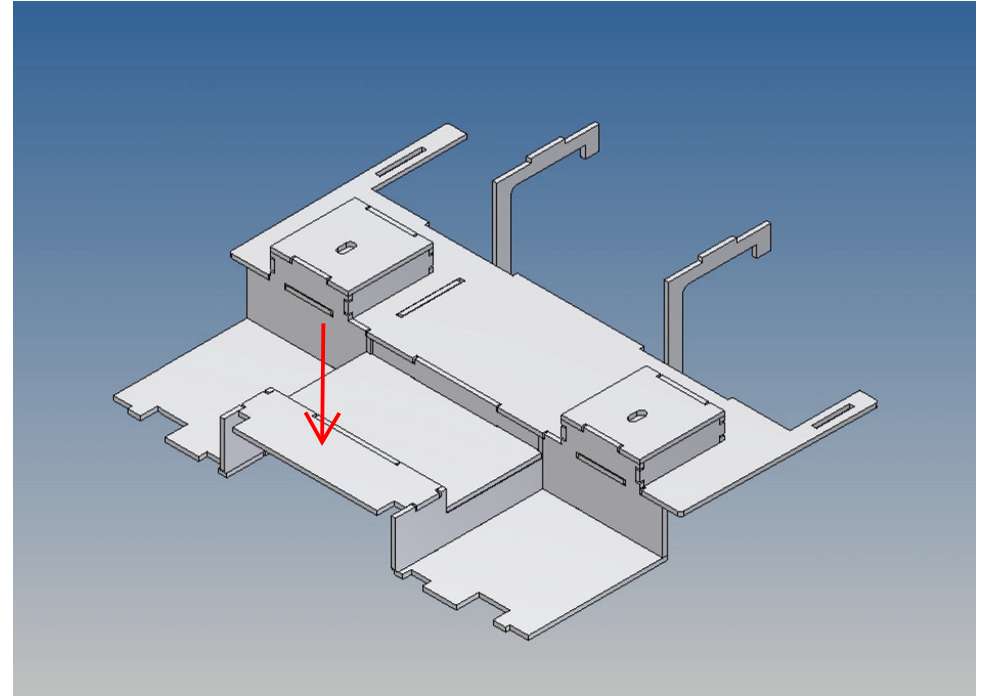
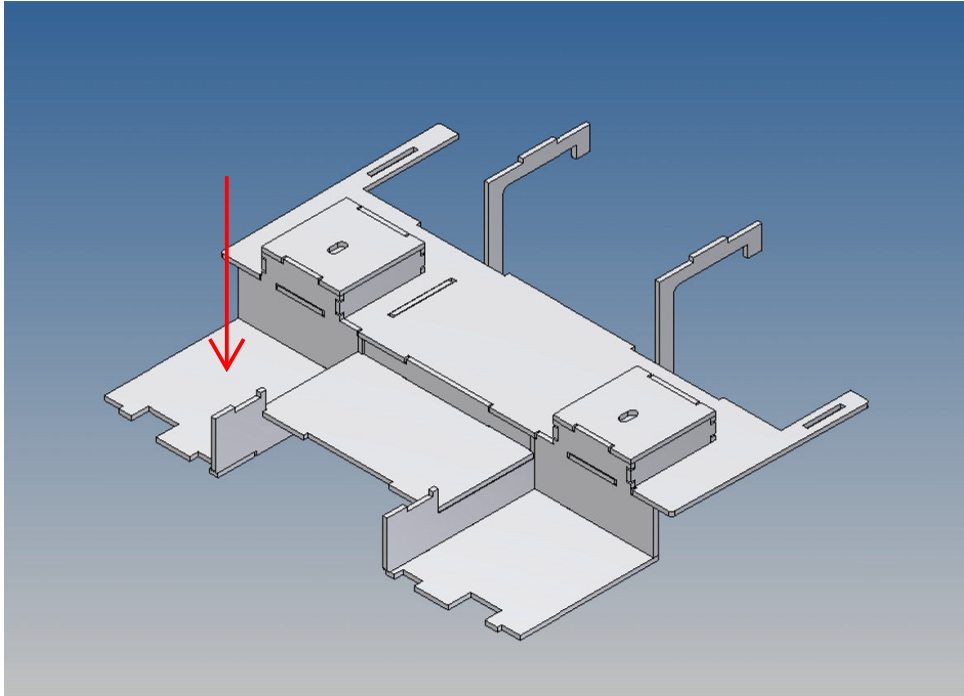
Unterseite / bottom view

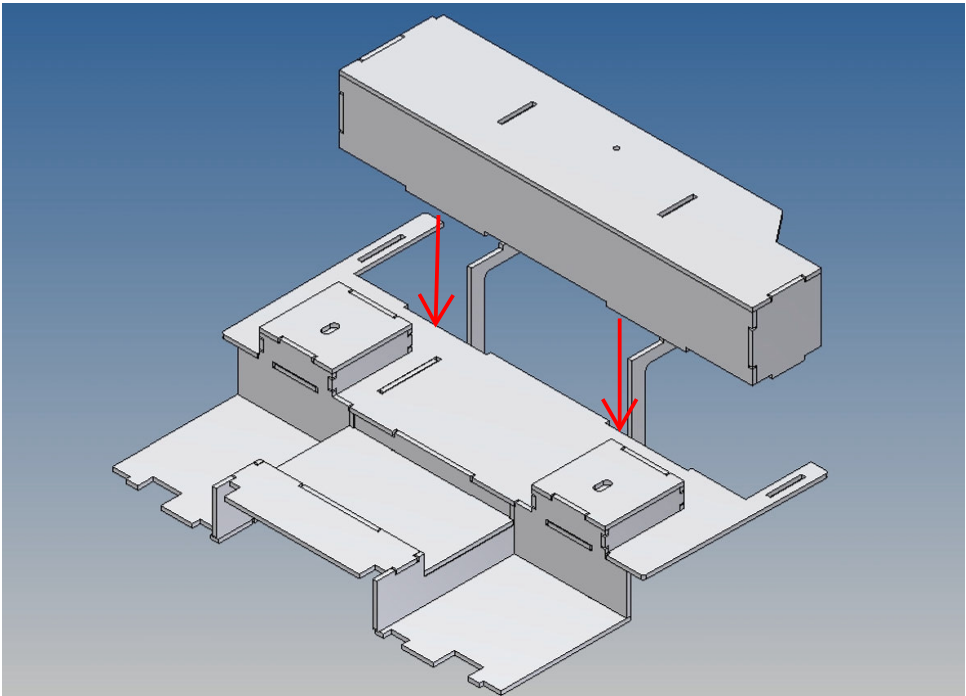
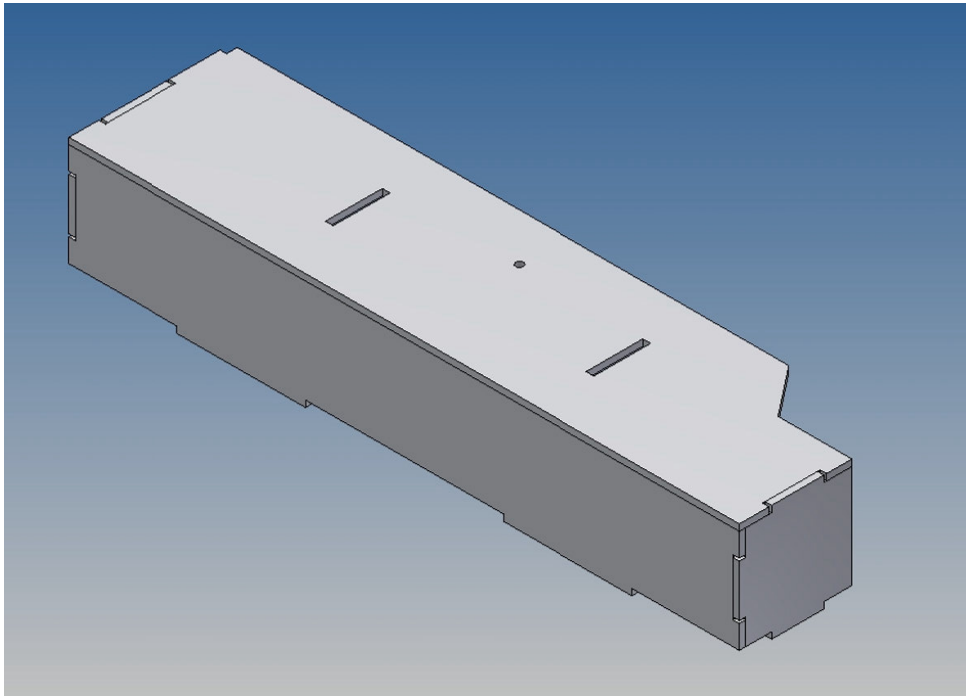
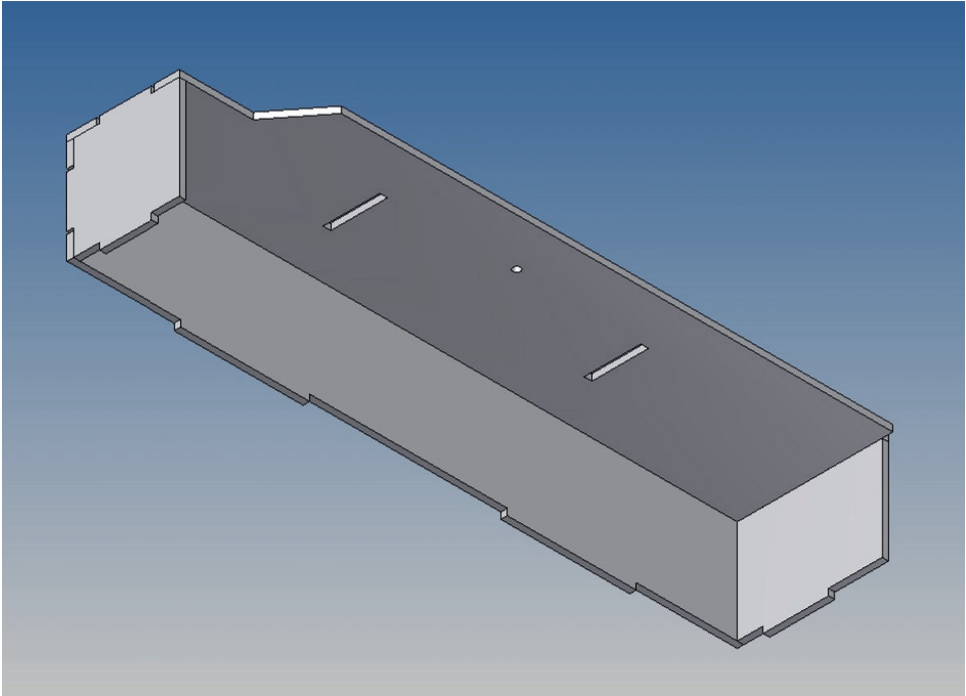
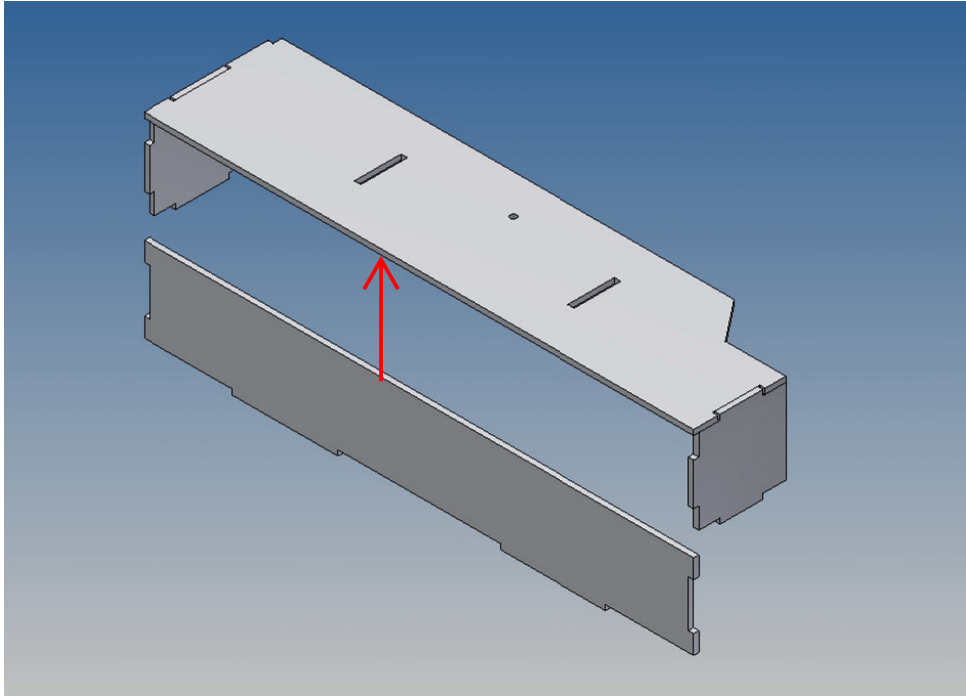


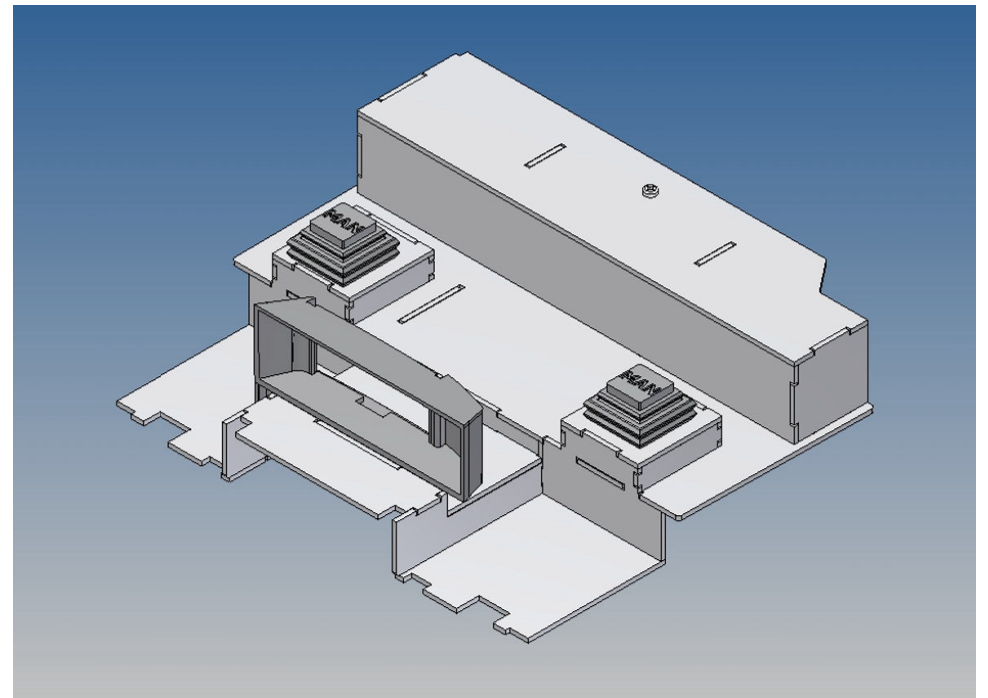
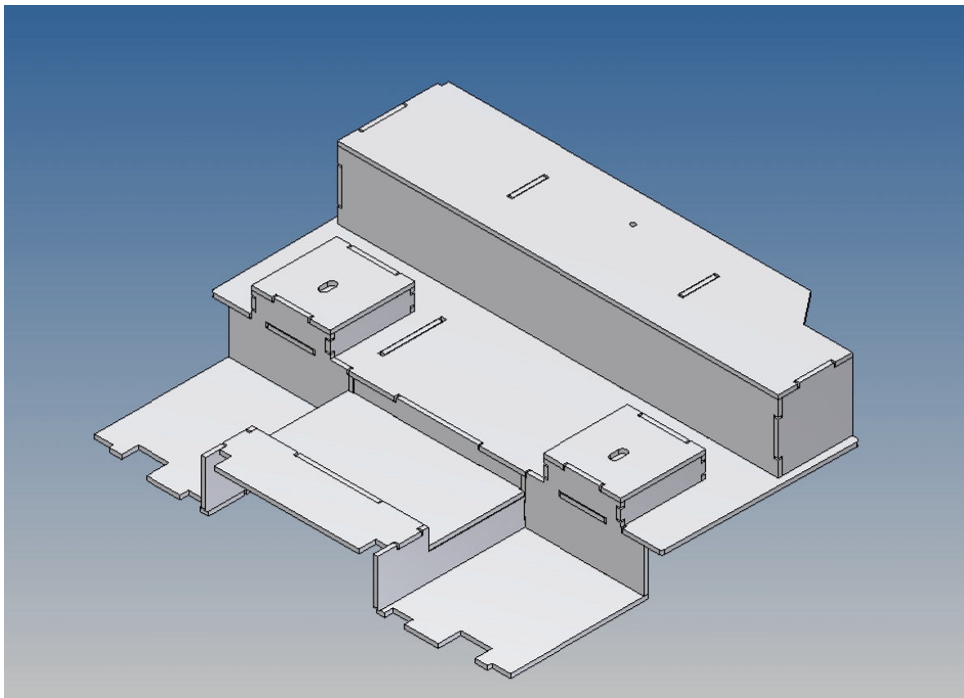
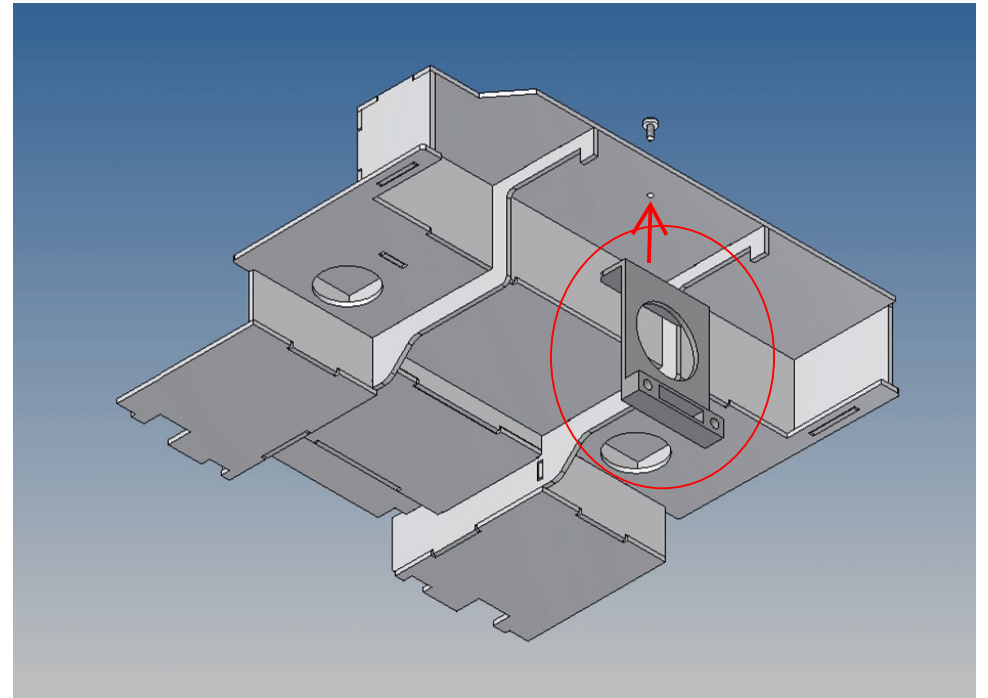
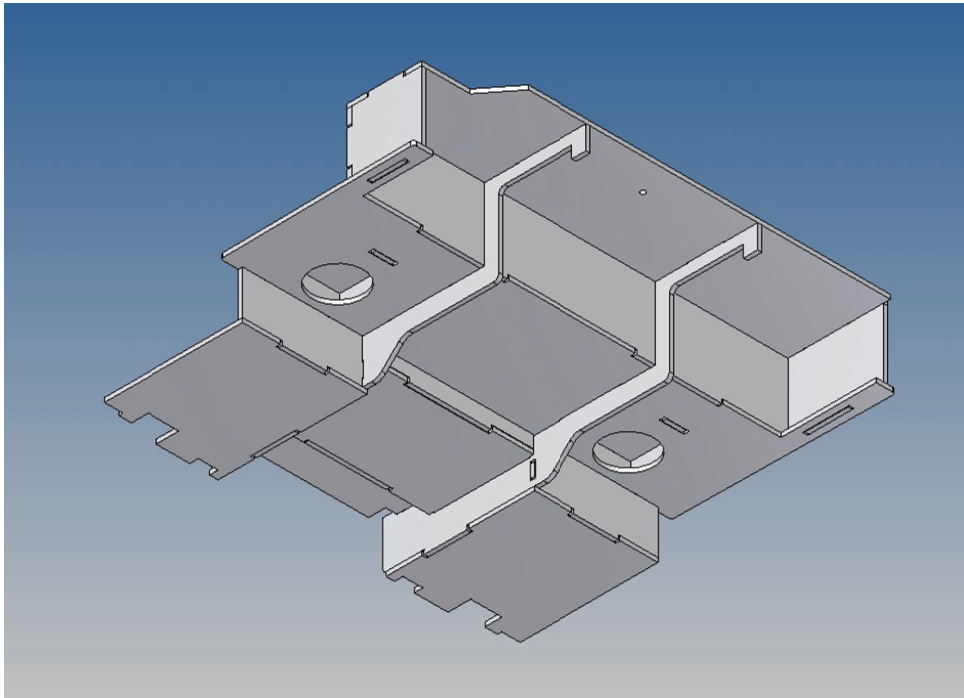












Good luck and have fun - your MDTechShop team

www.MDTechShop.de

For questions or replacement part requests please send a short e-mail.

Warning:

This is not a toy! It contains small parts! Keep it away from young children!