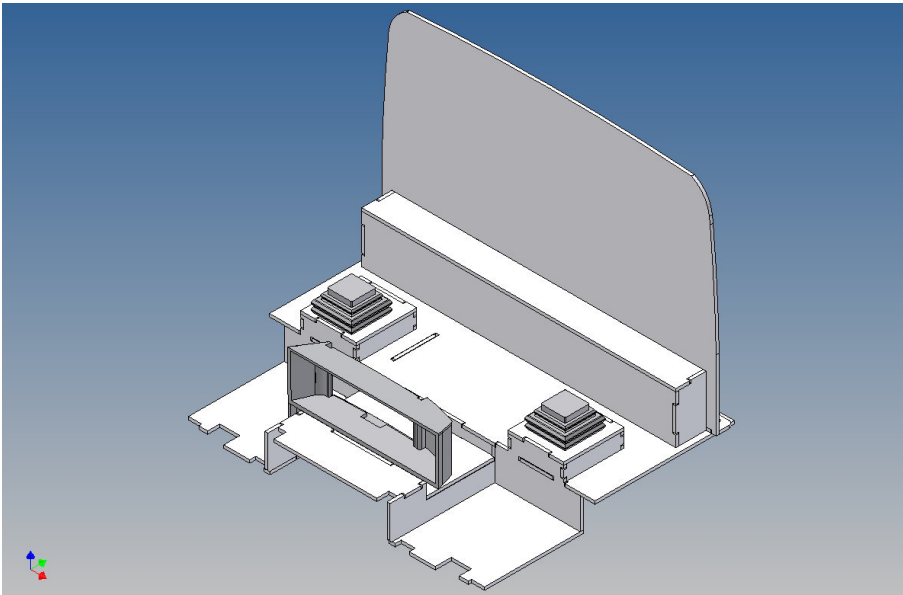


## Assembly Instruction

**Driving cap floor assembly kit for  
LESU MAN TGS (1:14)  
- dividing wall + seat mounting brackets -**

**Best.-Nr.: 2021-9013-07**



**Version 1.0 – 29.06.2021**

## Description

This kit includes parts for a driving cab floor for the LESU MAN TGS (M 1:14).

The floor is fixed at the bottom of the driver's cab and the seat holders are replaced with their own seat consoles.

This means that the seat holders do not hinder the use of a driver figure and the partition obscures the view of the technology through the windshield.

An attachment is included to supplement the drawer system in the dashboard.

Since the LESU driver's cab is relatively small, the following installation steps are recommended:

1. Thread the rear wall between the fenders.
2. Connect the cab floor to the rear wall using the attached insertion aids.
3. rear wall and cab floor, with the included 2.2x6.5mm screws, screw together.

## The assembly

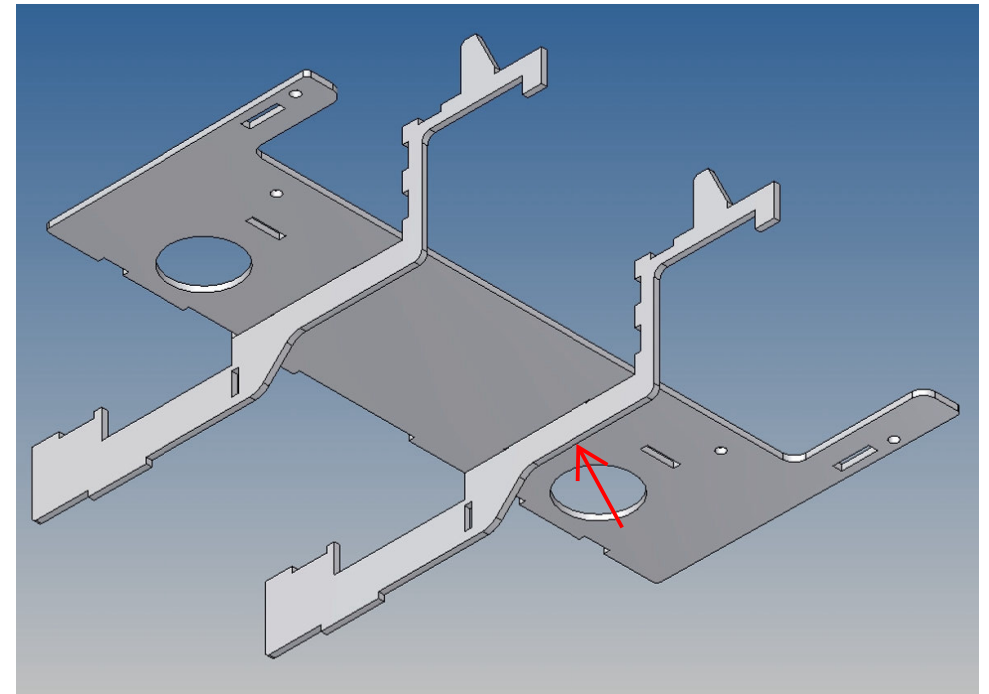
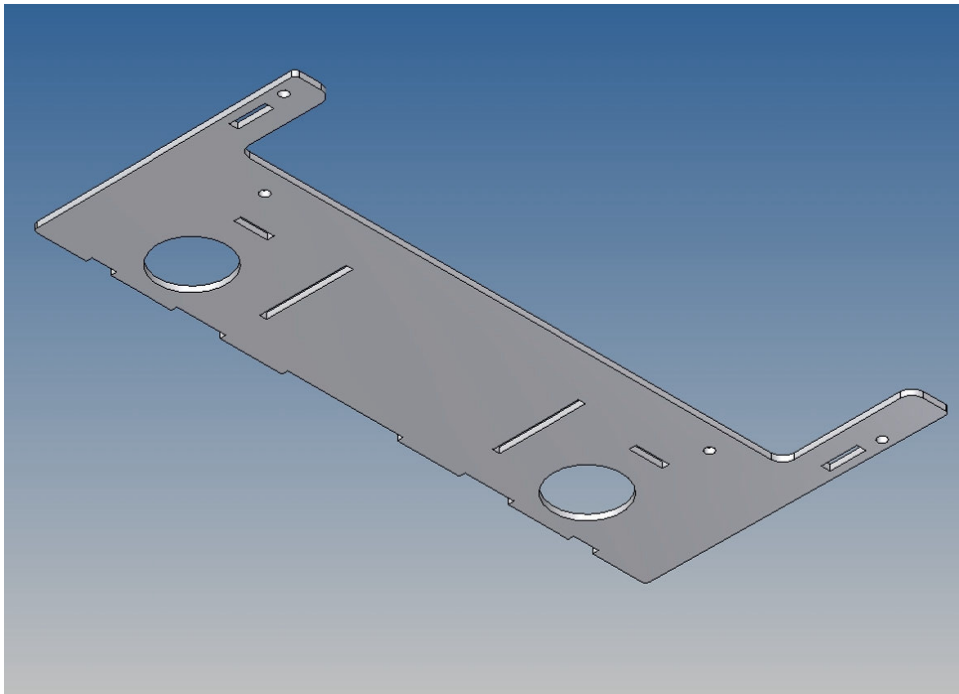
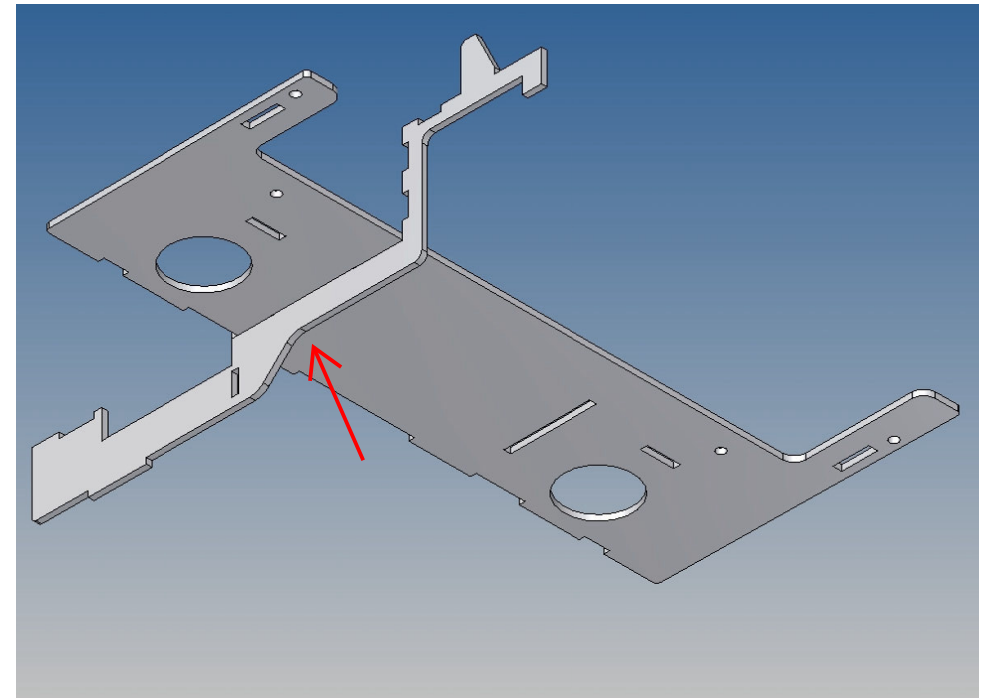
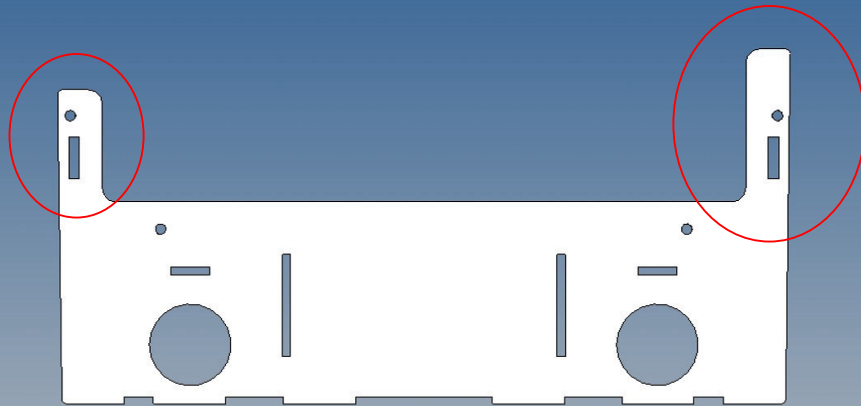
Before assembling, please familiarize yourself with the order of parts, location and fit of the individual parts.

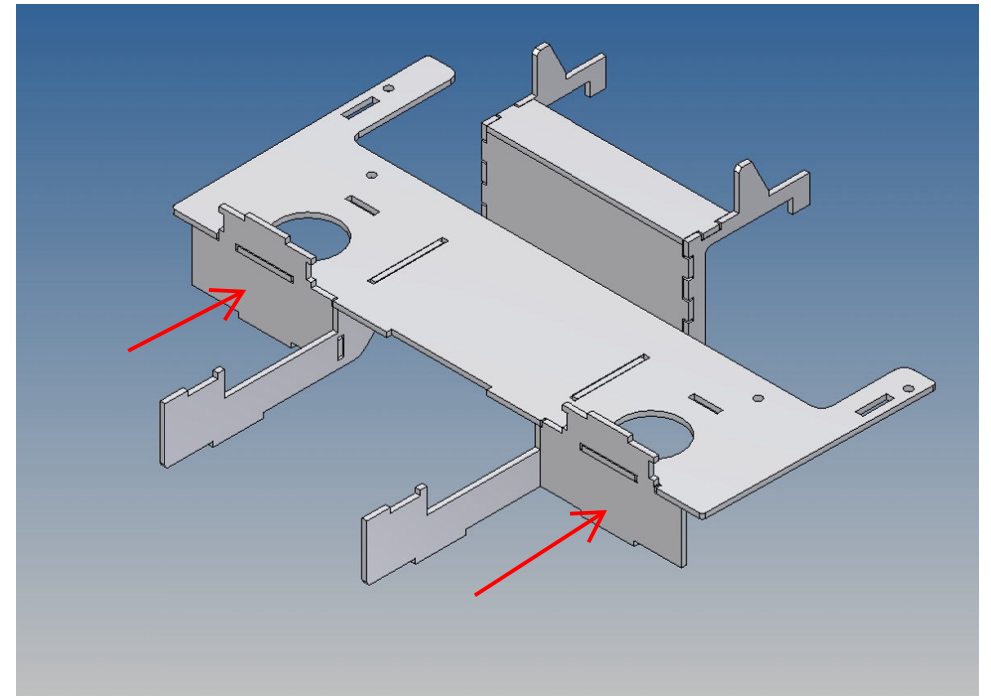
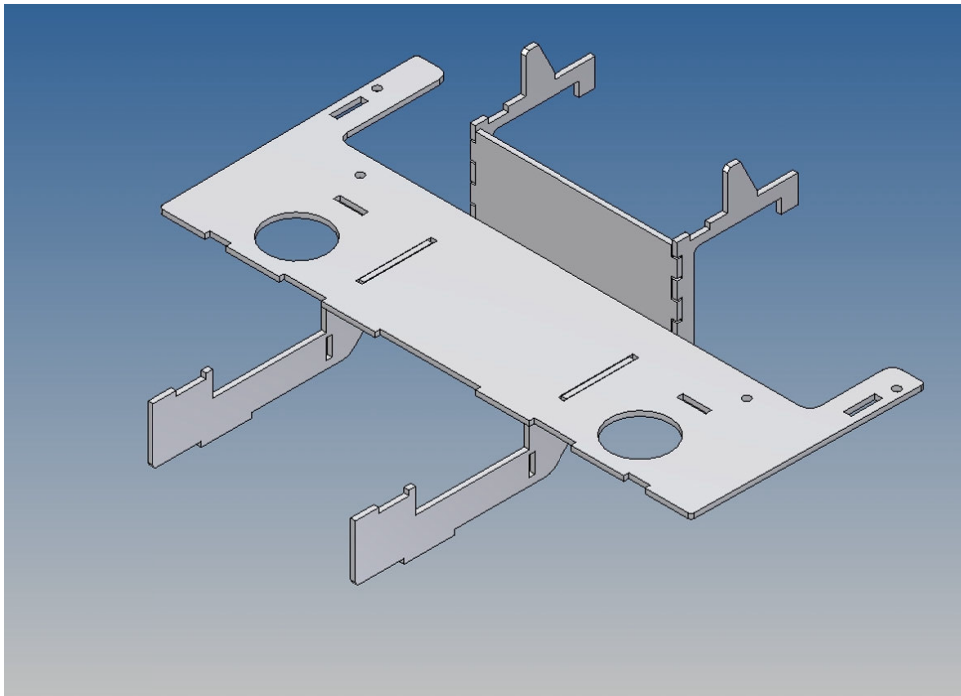
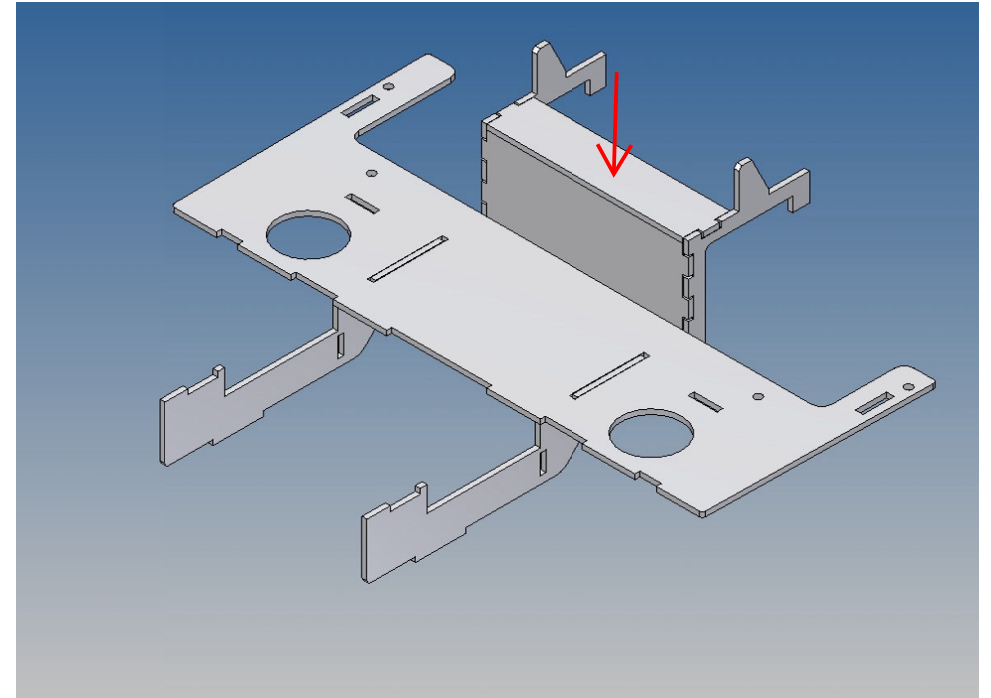
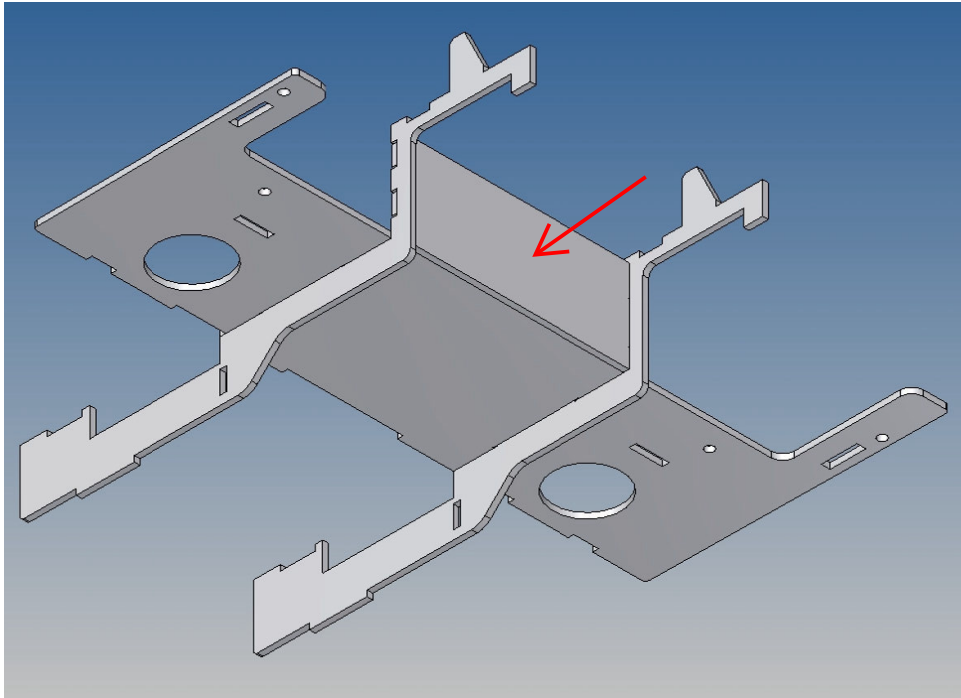
When assembling, it has proven itself to first fix the individual parts only at certain points with superglue and then to completely glue the finished overall structure along the joint edges with model building plastic glue.

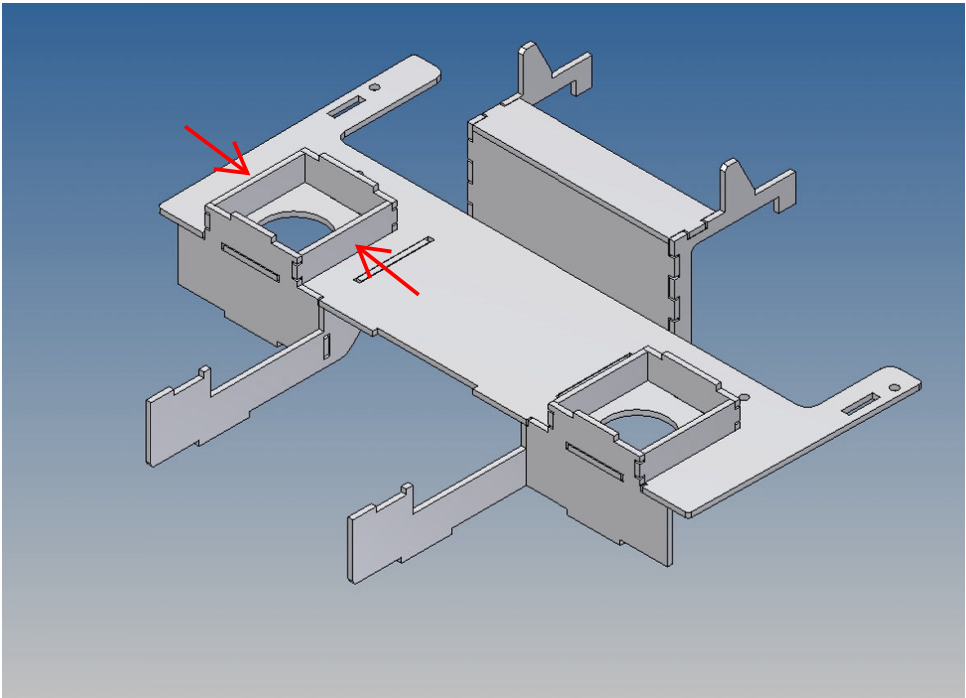
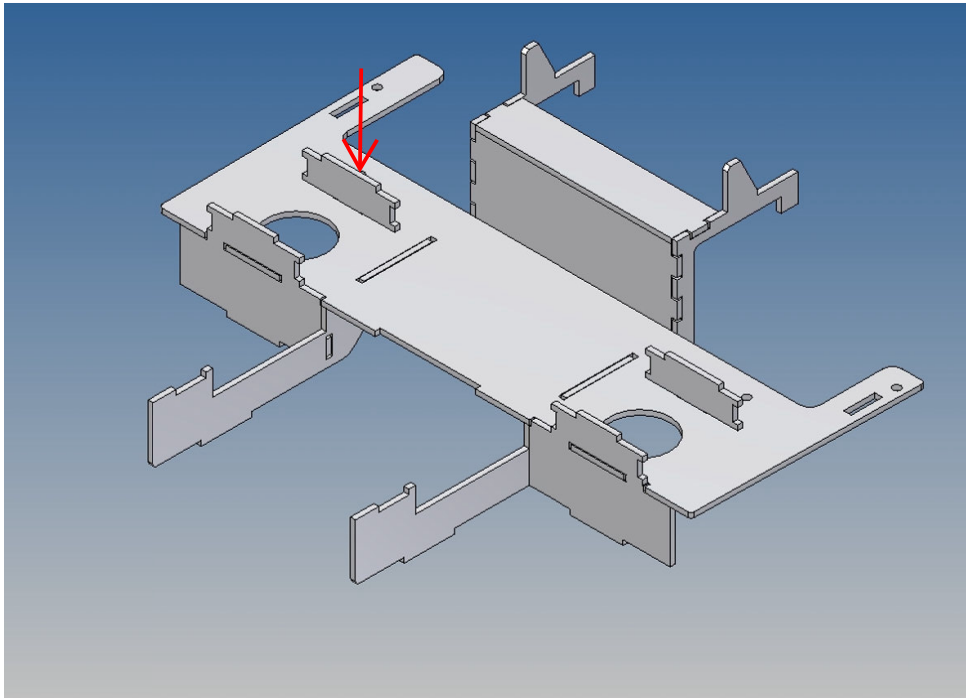
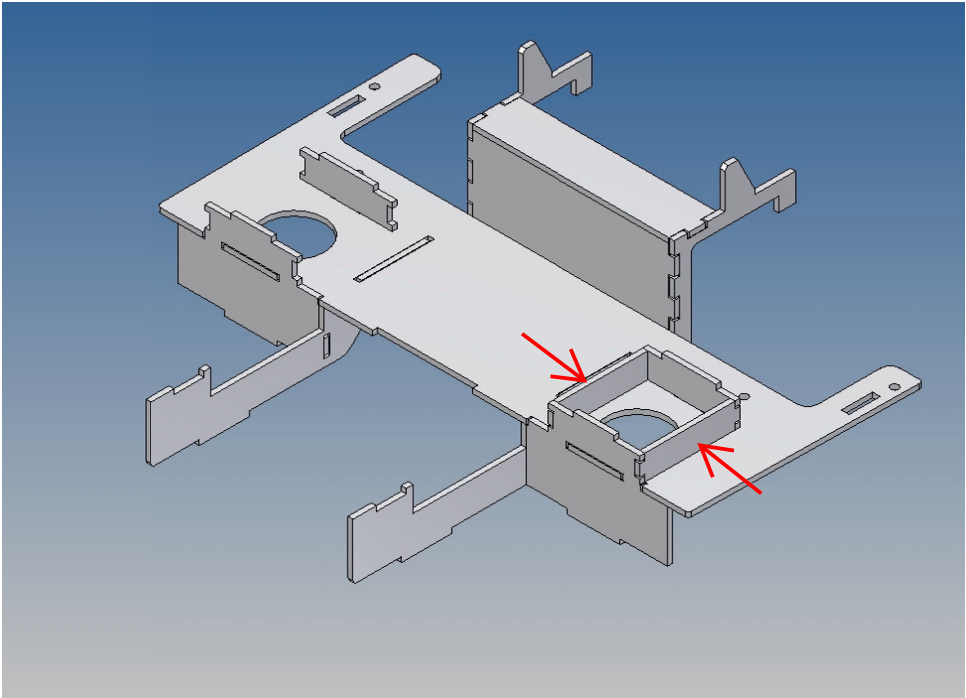
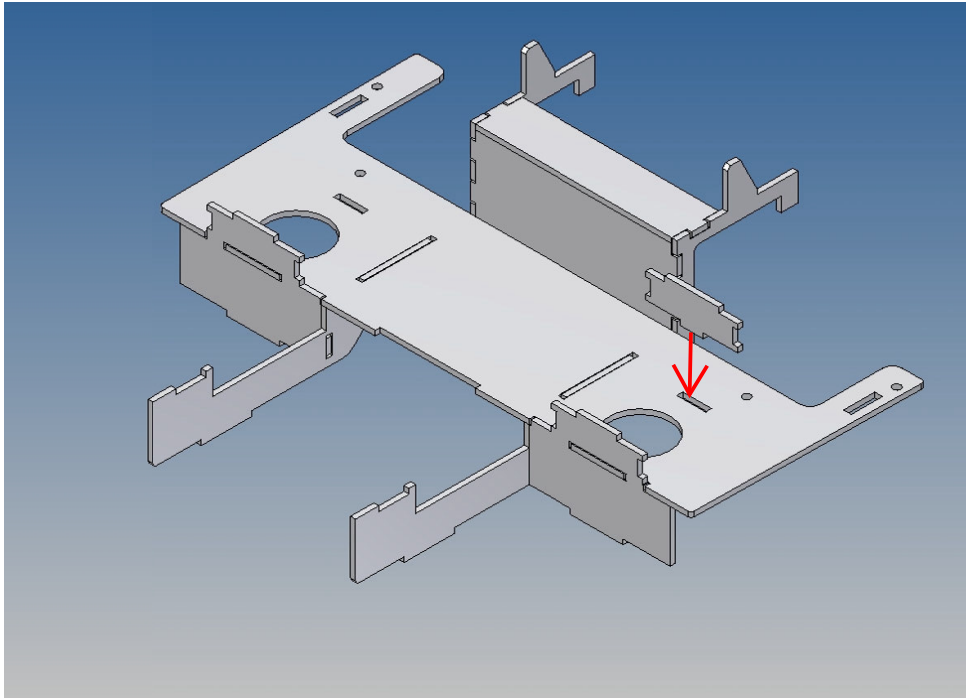
Since the components are made of polystyrene, use activator spray as sparingly as possible, or if in doubt, do not use it. Polystyrene briefly becomes soft and brittle when exposed to activator sprays.

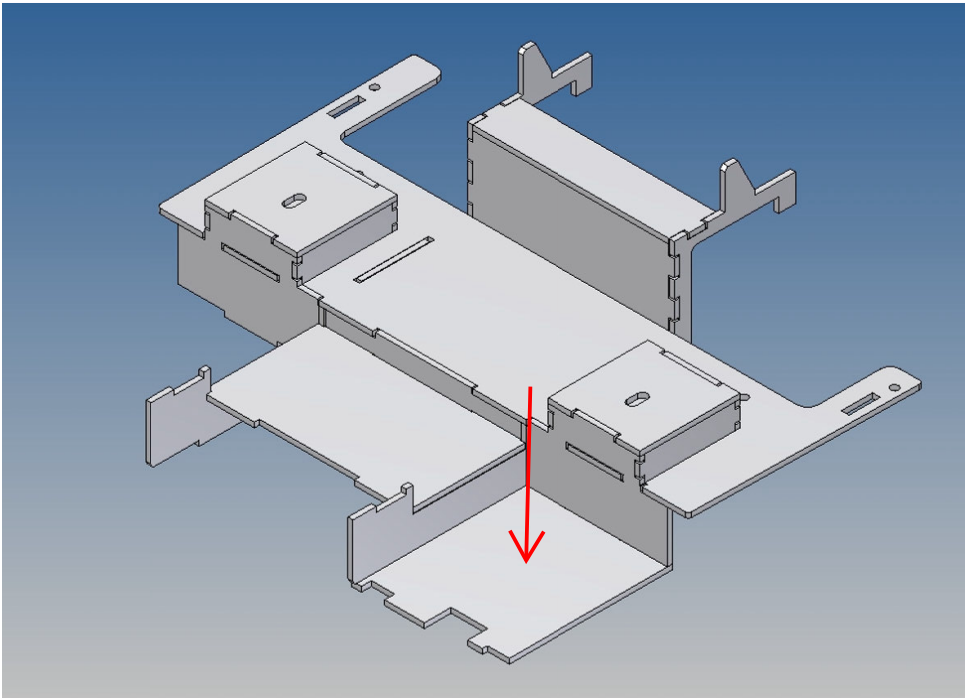
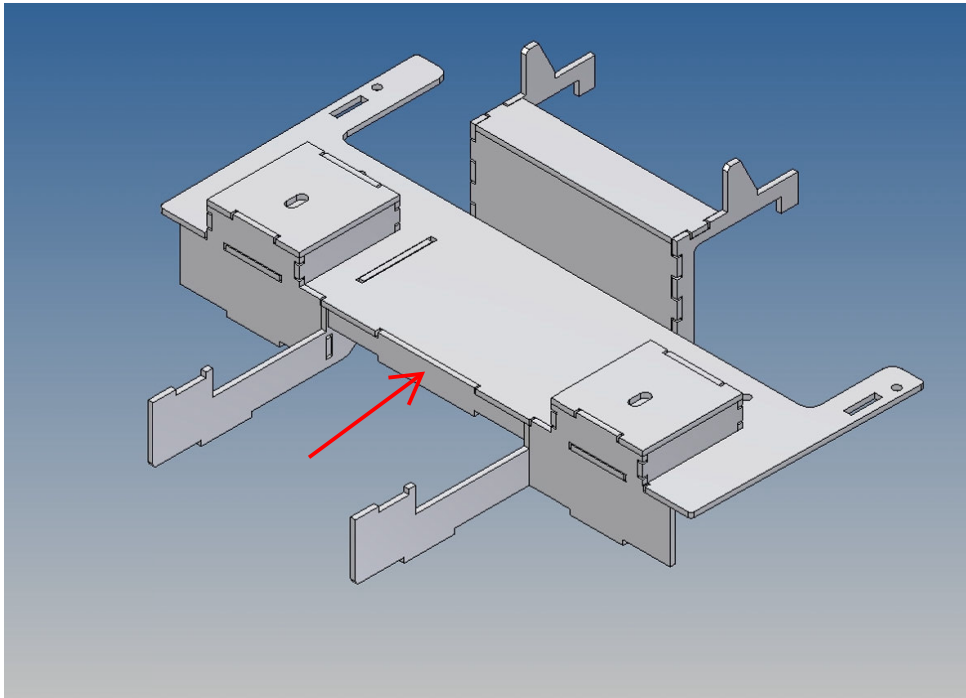
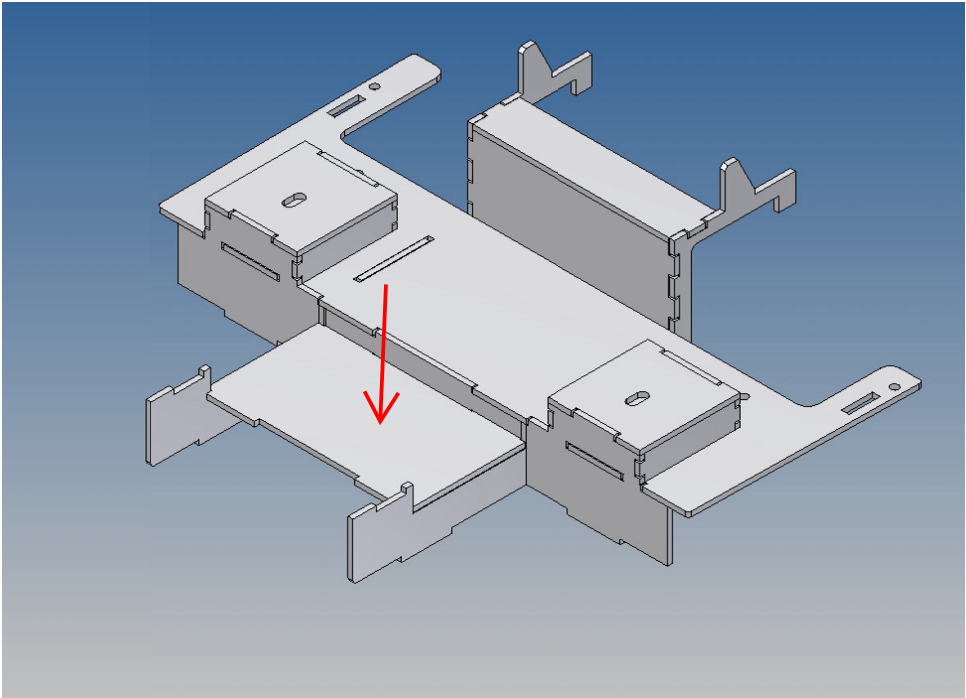
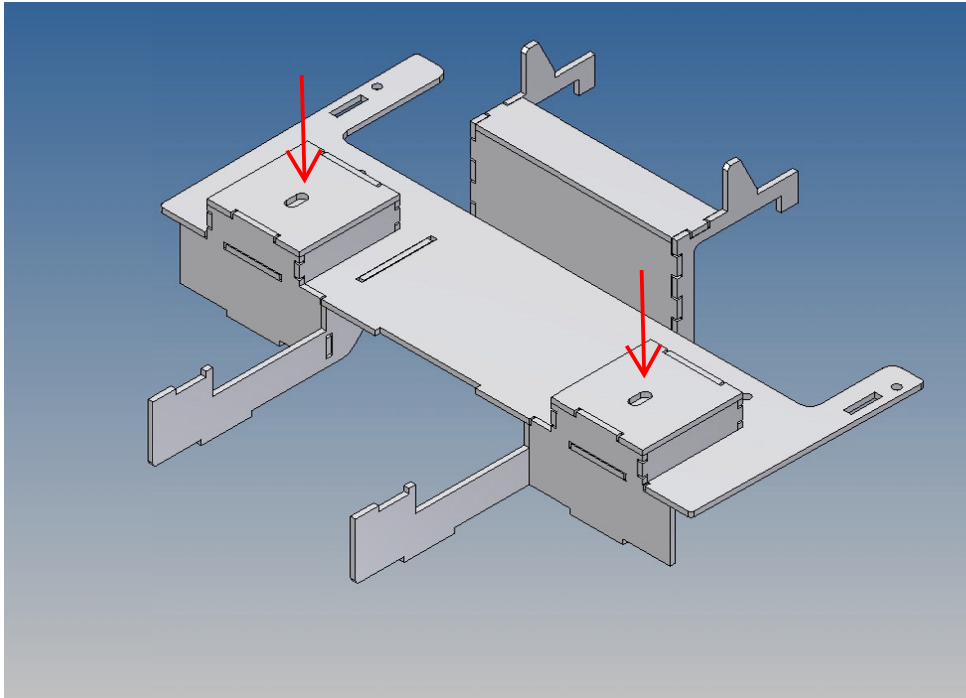
We recommend the use of model-making plastic glue for complete bonding.

Unterseite / bottom view

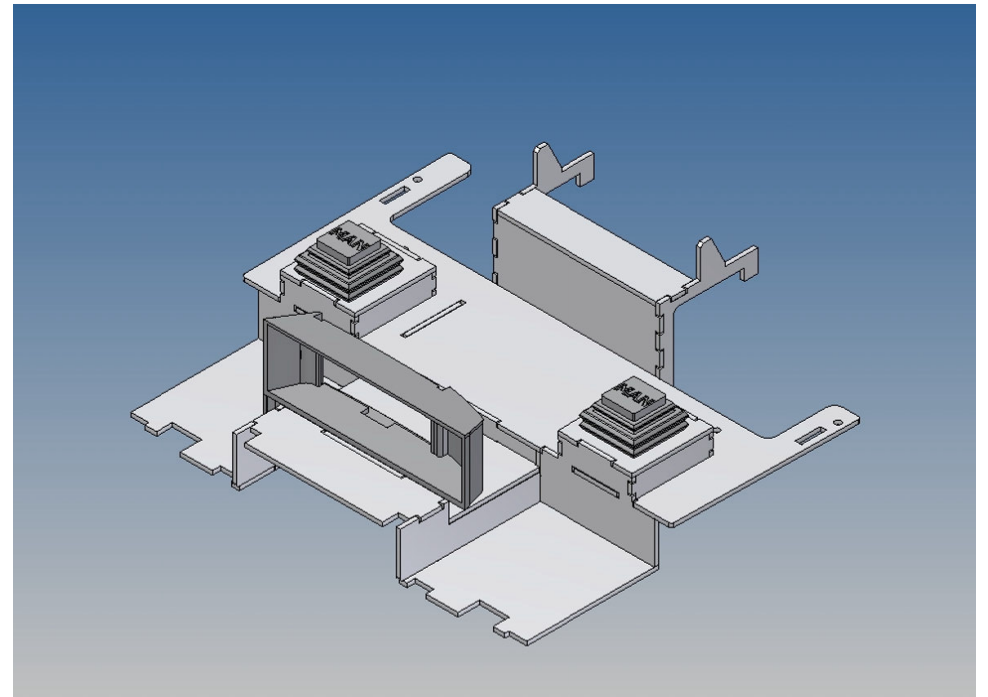
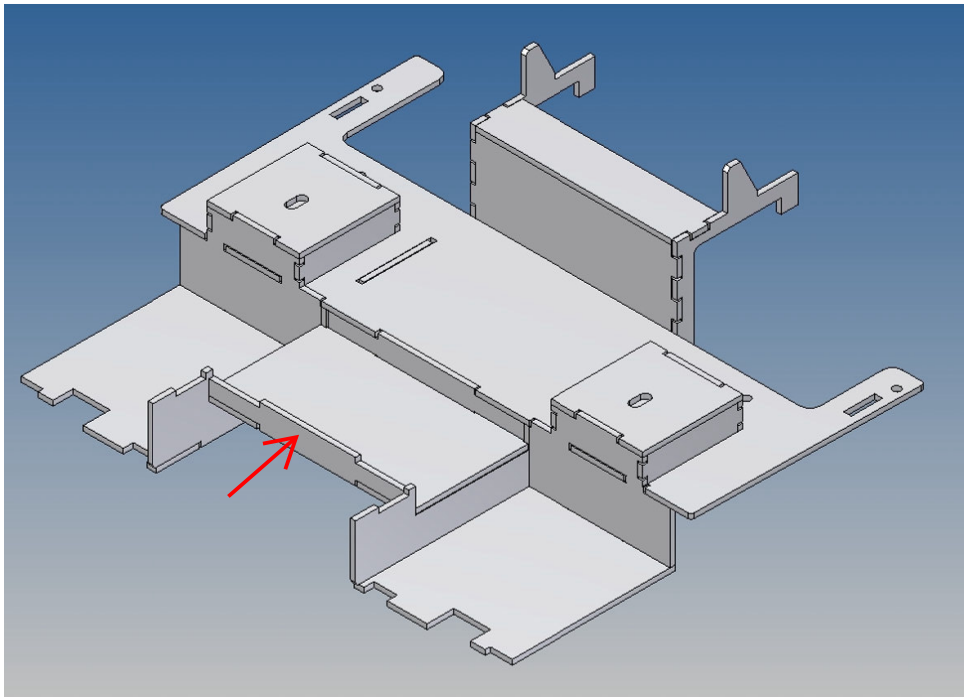
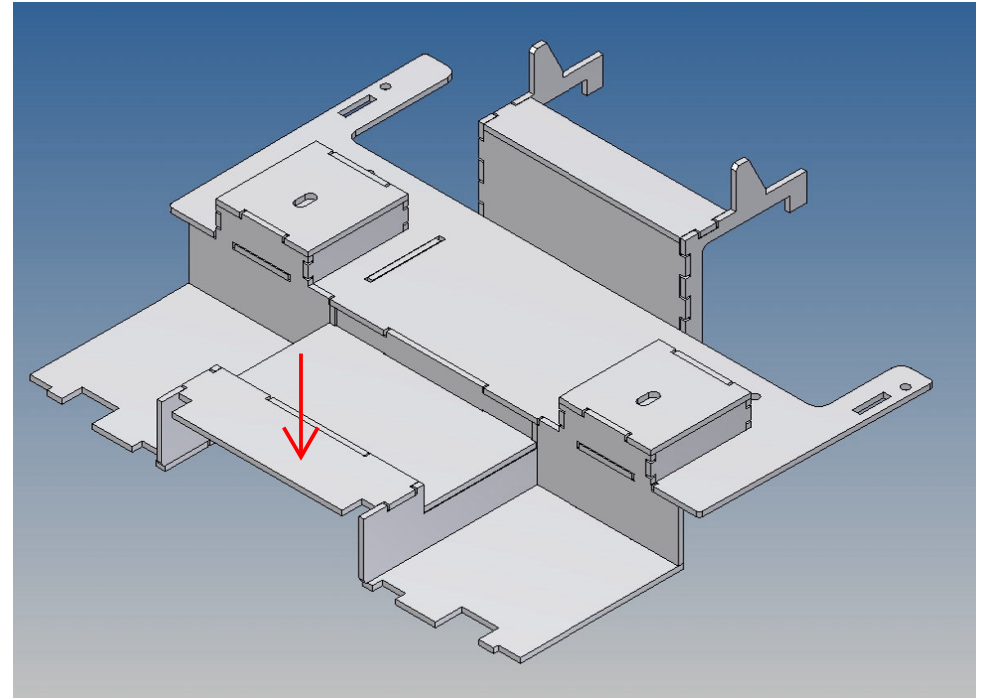
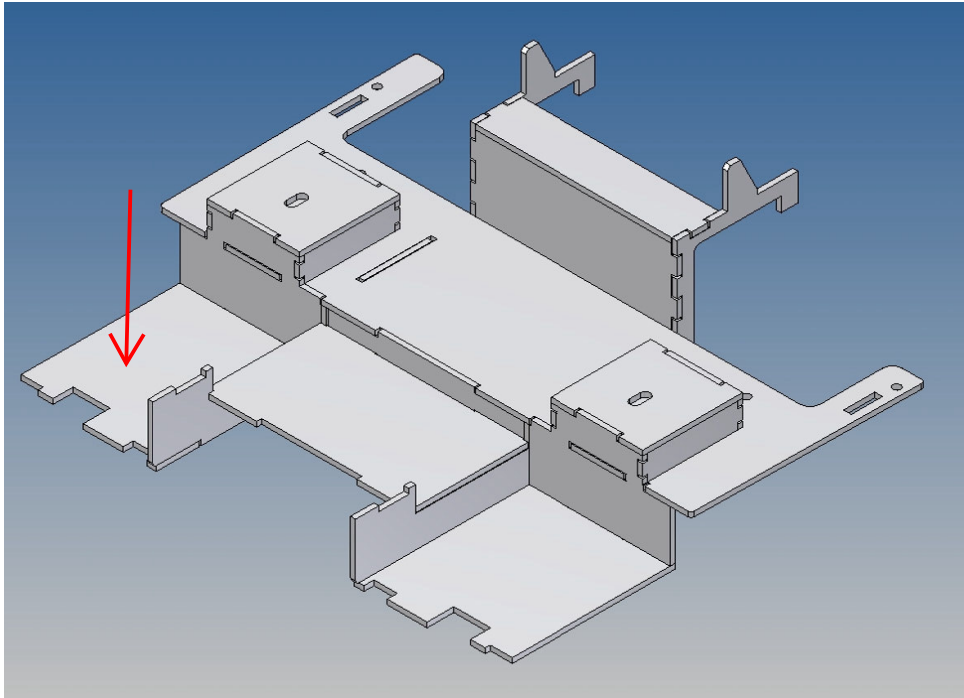


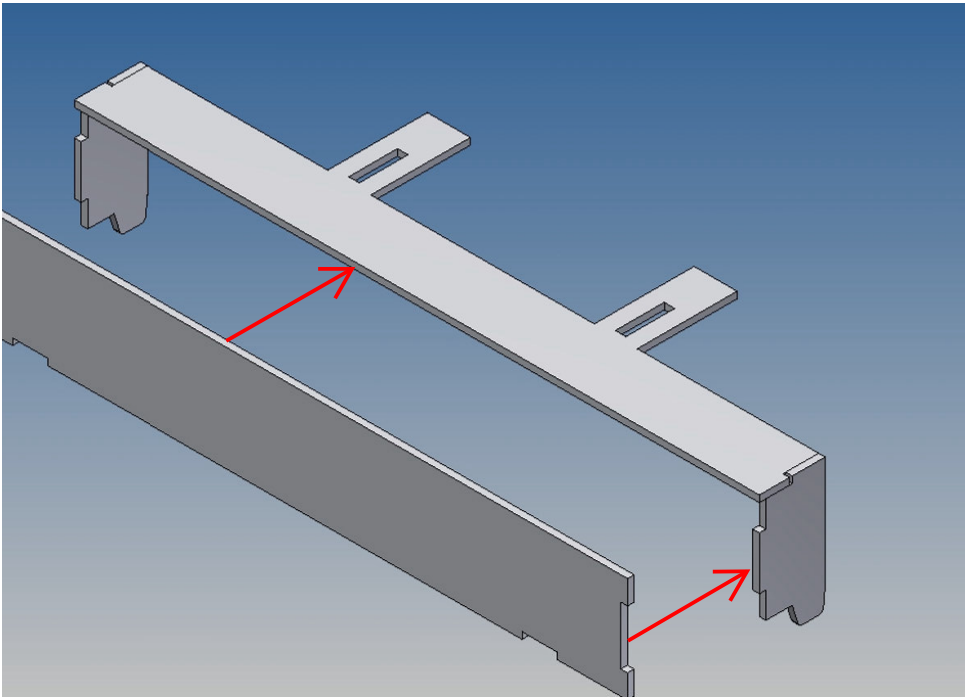
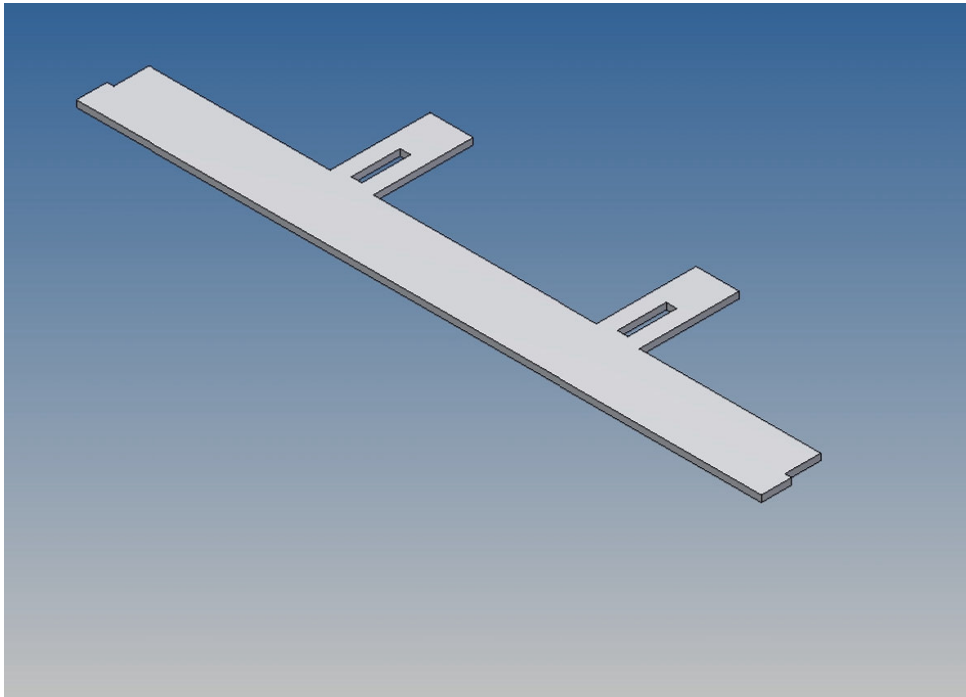
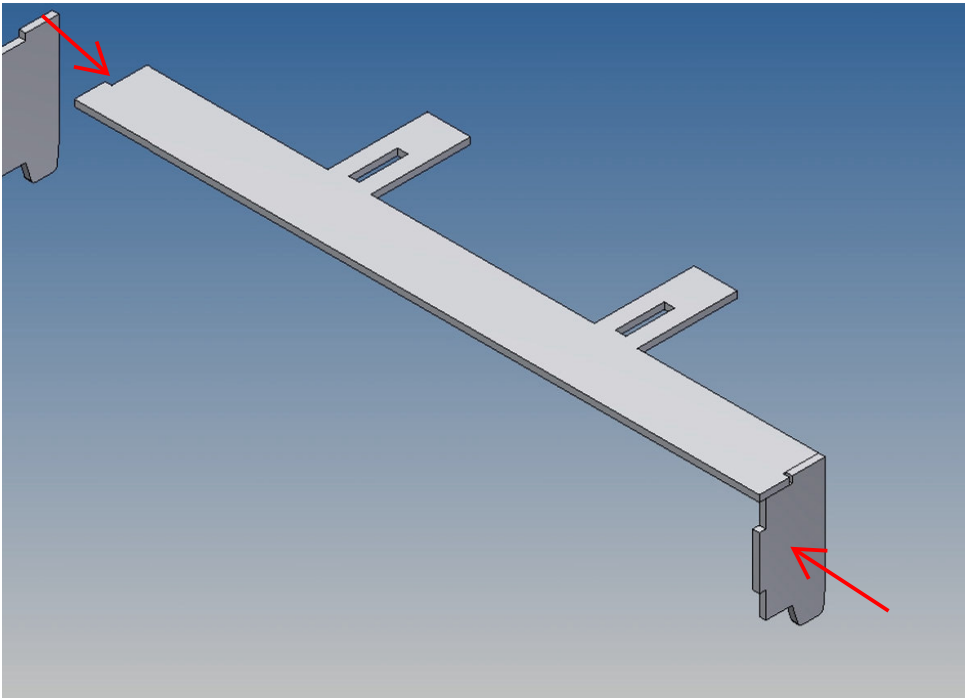
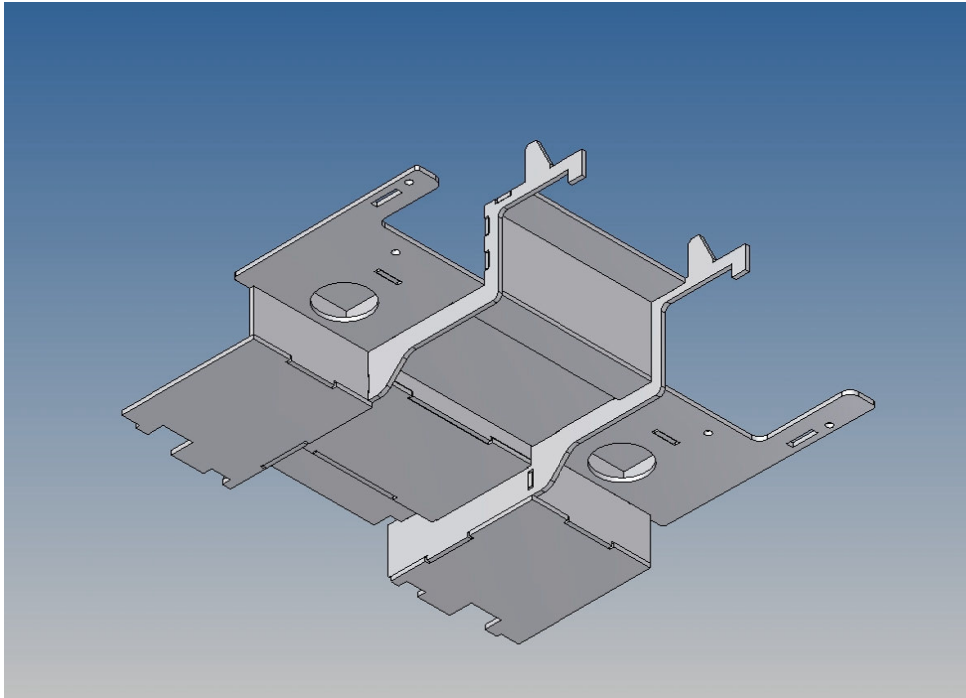


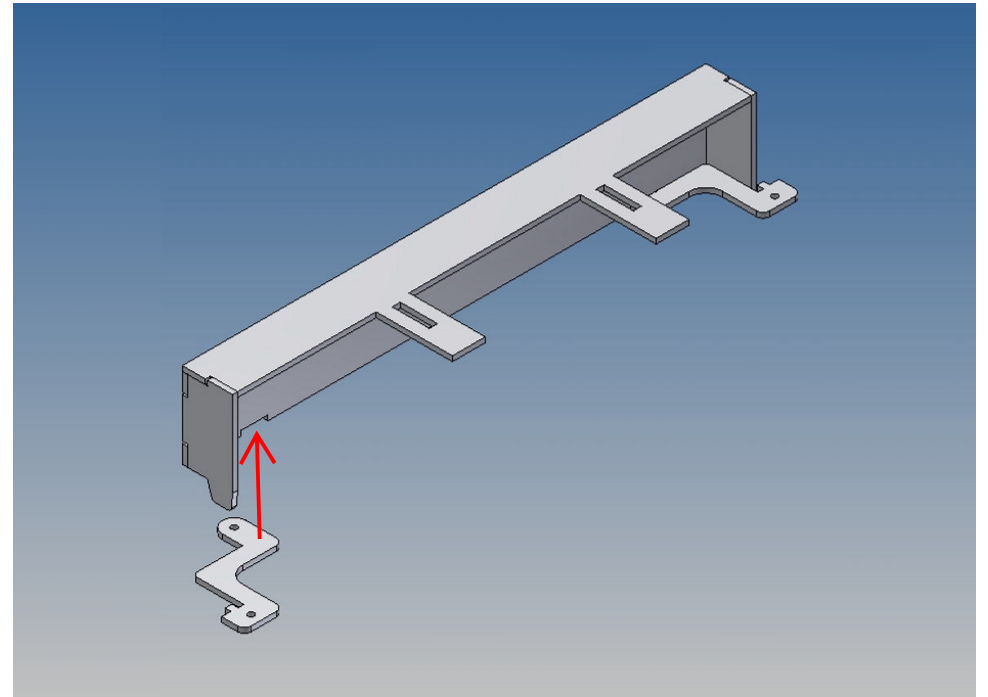
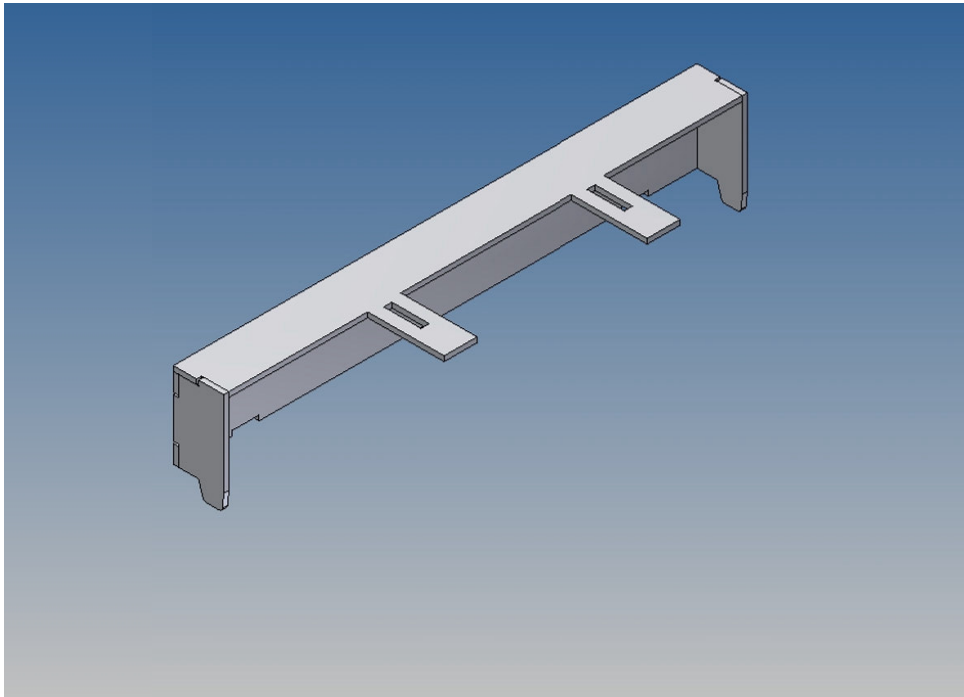
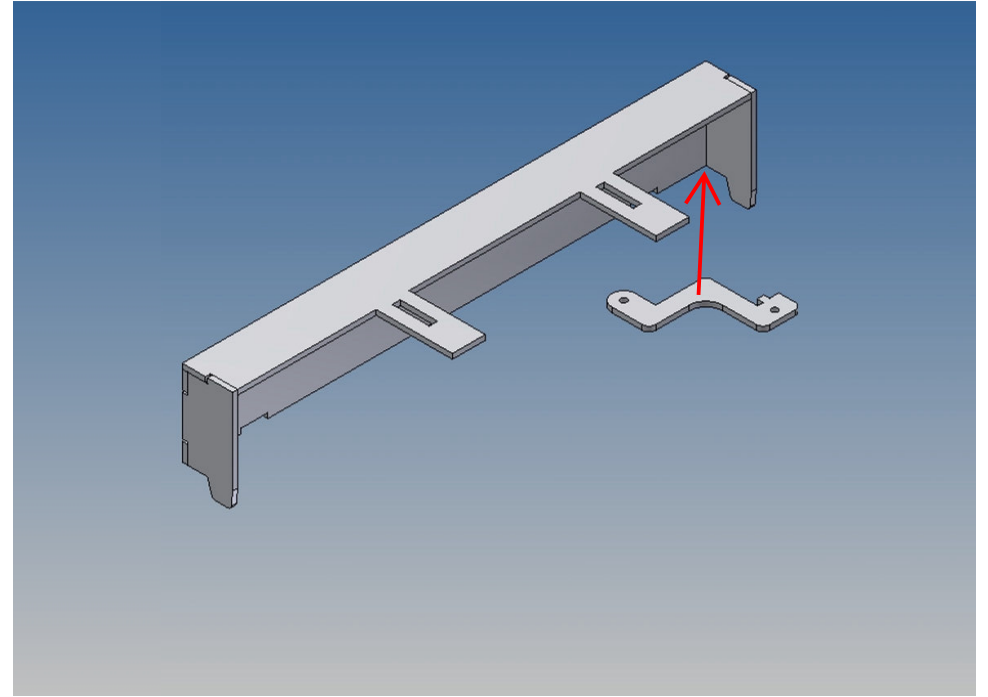
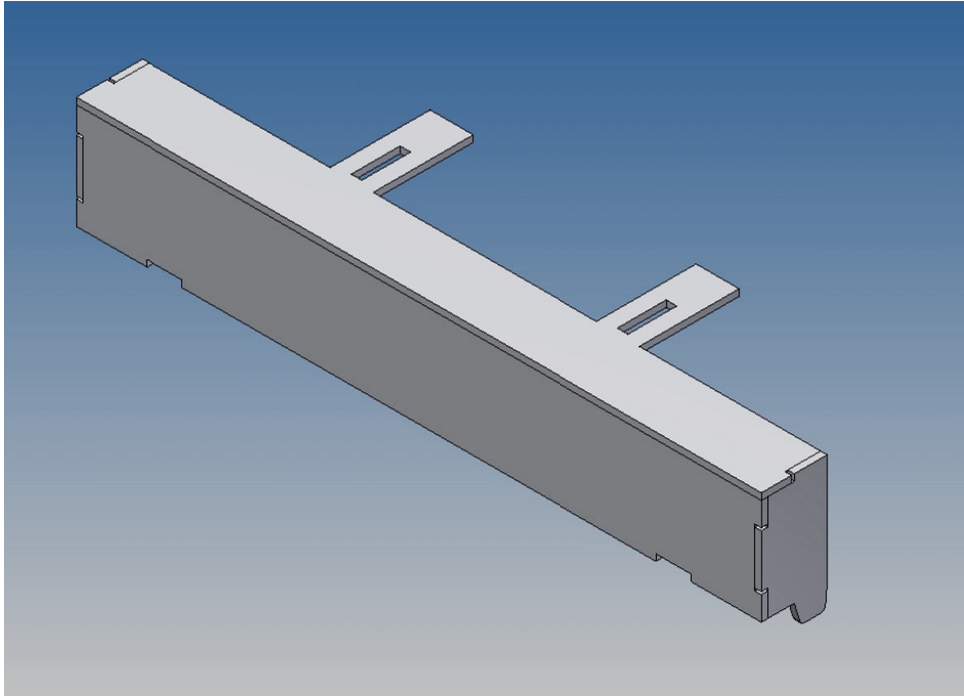




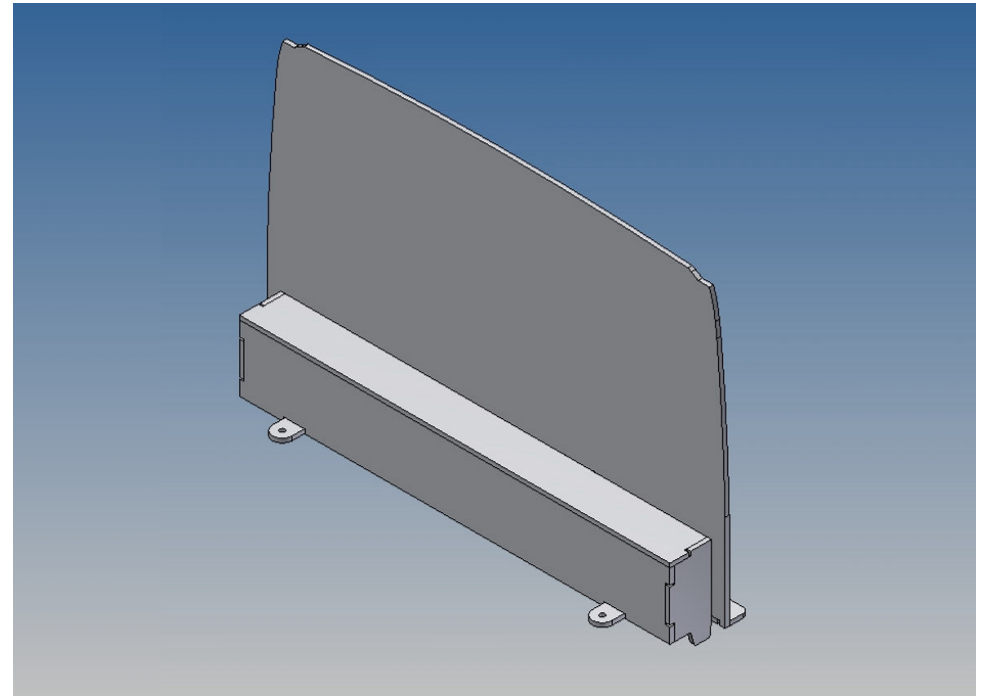
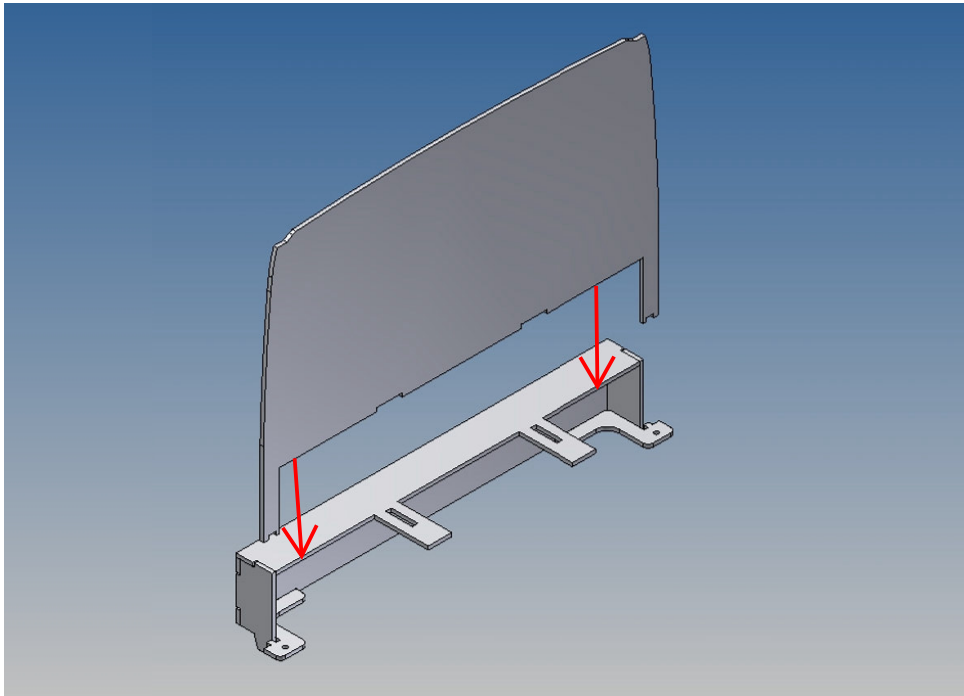
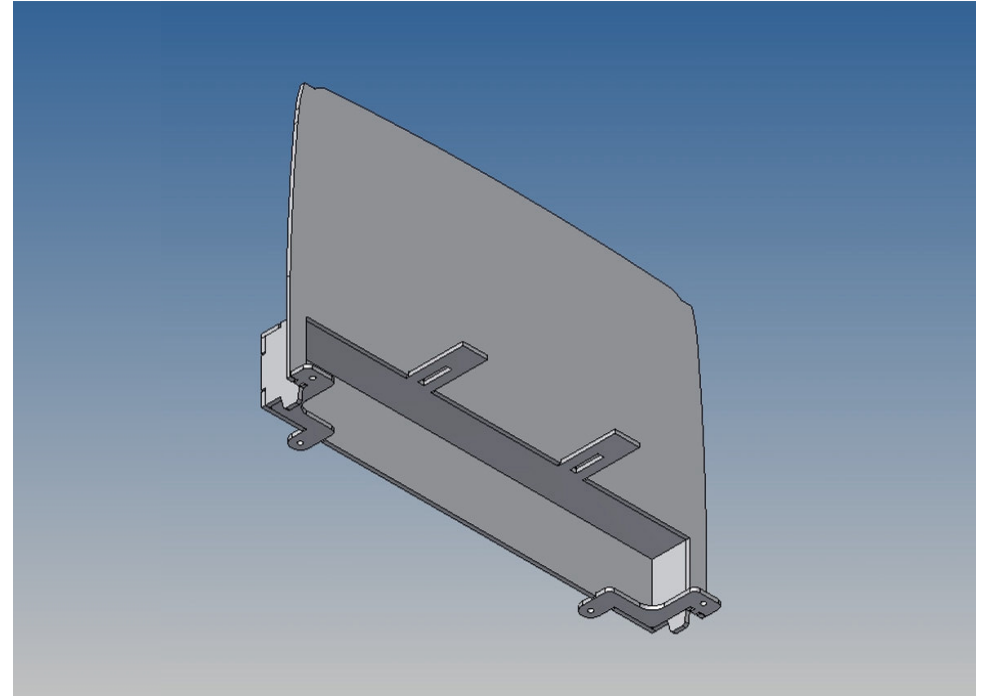
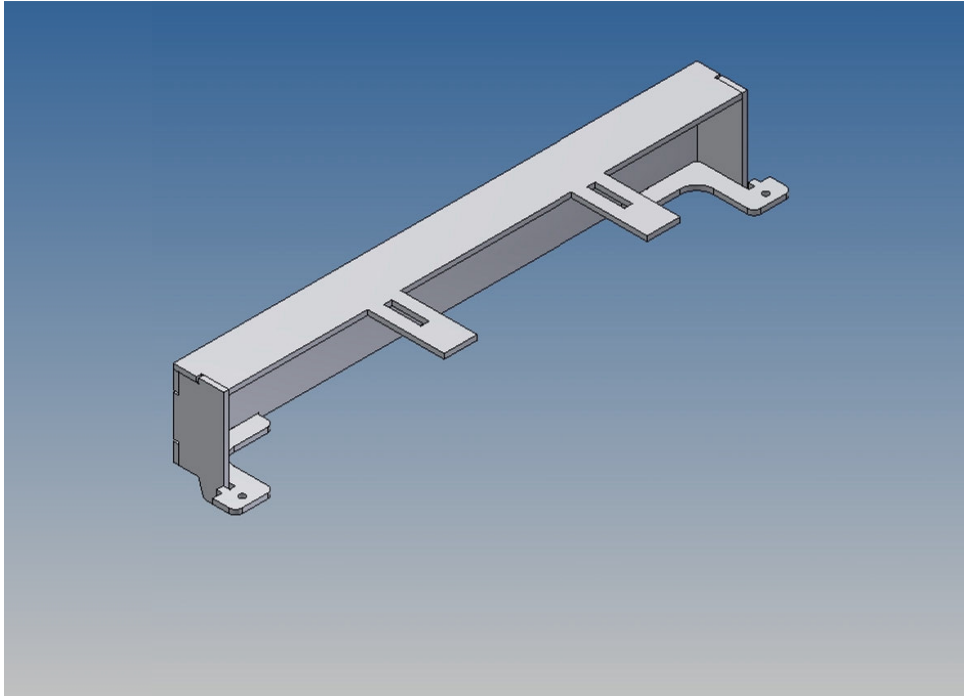


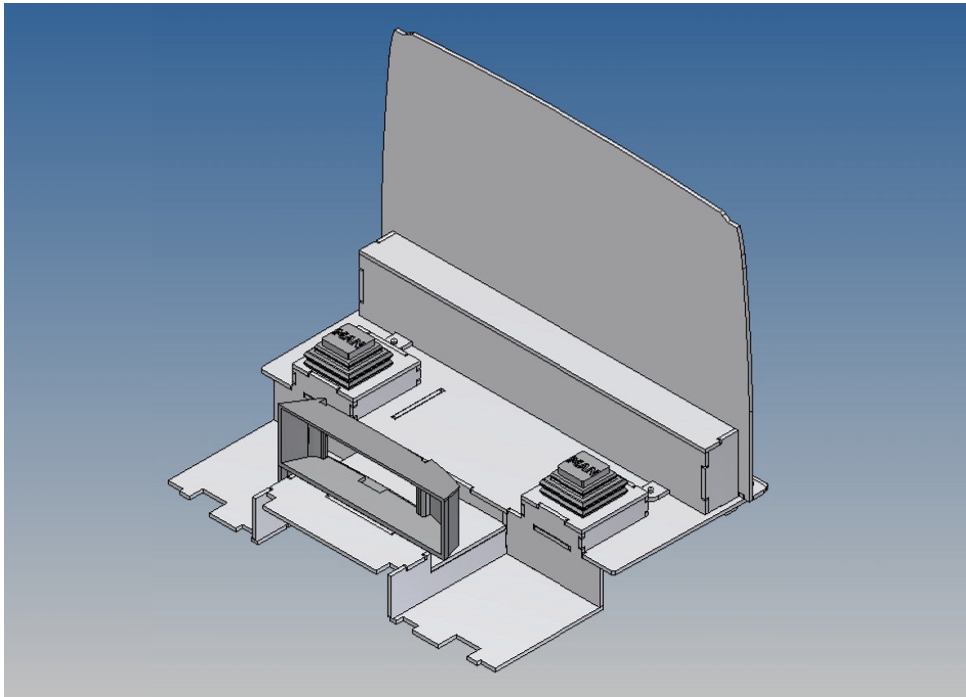
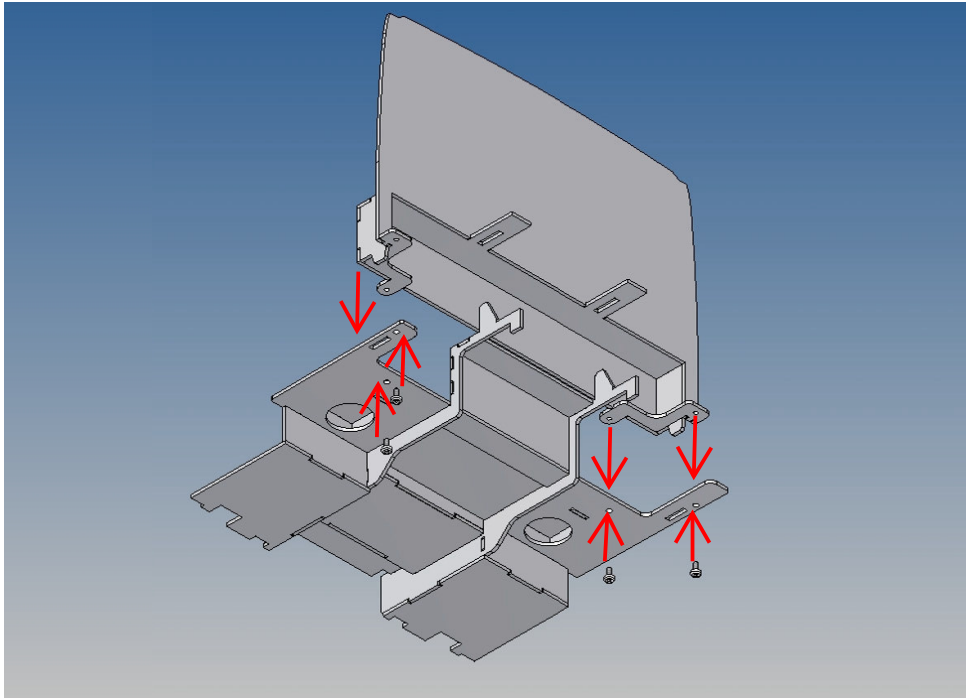












**Annotation:**

Good luck and have fun - your MDTechShop team

[www.MDTechShop.de](http://www.MDTechShop.de)

For questions or replacement part requests please send a short e-mail.

**Warning:**

**This is not a toy! It contains small parts! Keep it away from young children!**