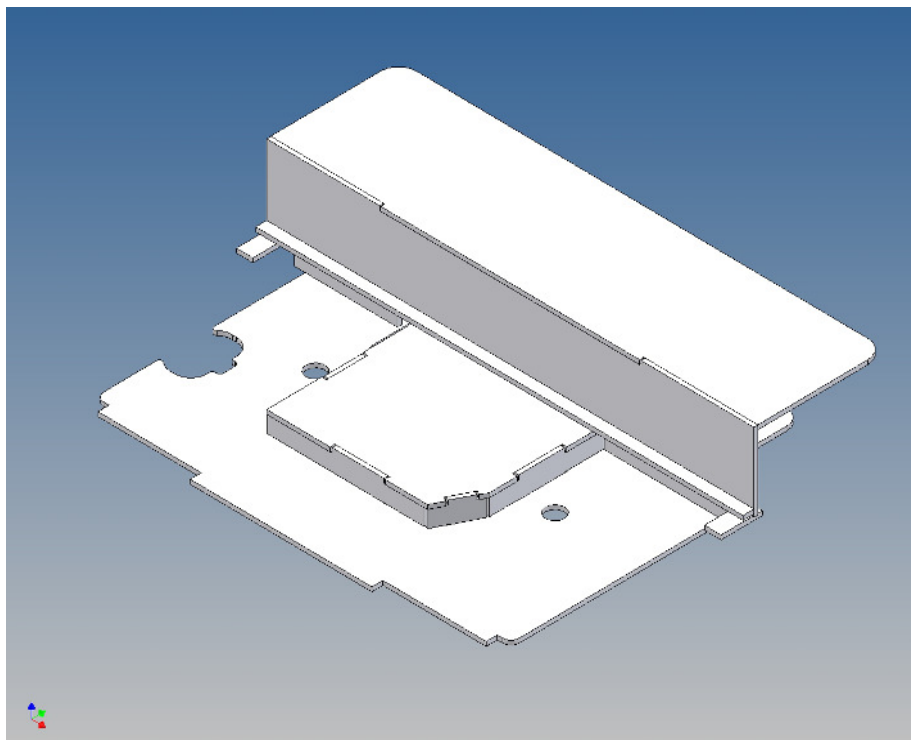


# Assembly Instruction

Driving cab floor assembly kit for  
TAMIYA Mercedes Benz 1838 / 1850 (1:14,5)  
- cab bed -

Best.-Nr.: 2014-9002-01



Version 1.1 – 23.12.2016

## General Description

This kit includes parts for a driving cab floor for the **TAMIYA MB 1838 / 1850**.

The floor consists of two parts and is placed on the existing base plate and partly in the driver's cab.

The part set hides the view onto the RC equipment through the windshield.

The mounting of the driver cabin's tilt limiter can be left there, as provided in the kit.

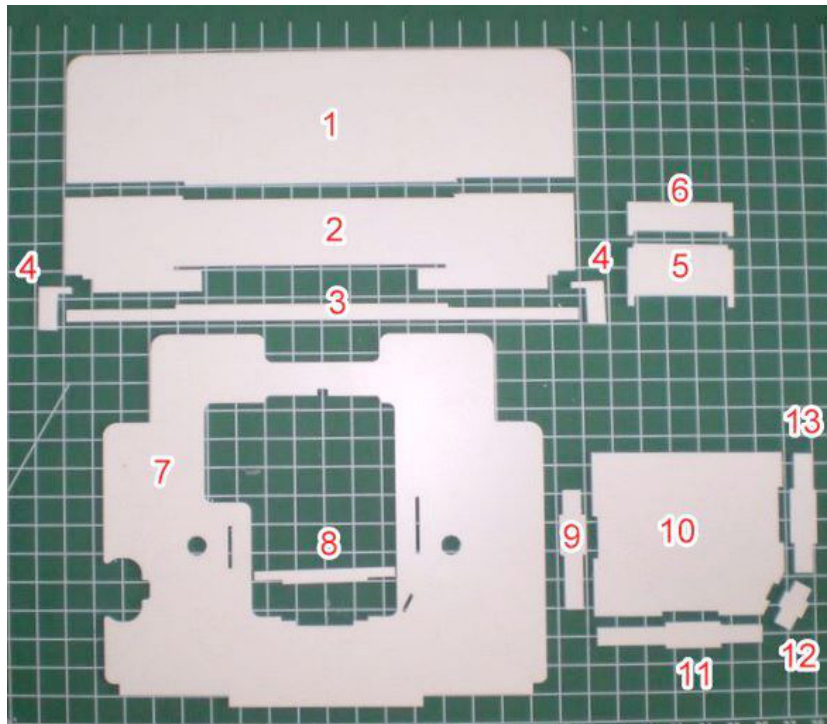
## Assembly Procedure

Before you put the parts together please read the assembly instructions carefully and pay attention to the assembly sequence and test the fitting accuracy of the parts before gluing them together.

It is helpful to fix the parts at first only on a few points with super-glue and after a check along the edges fully with super-glue or a polystyrene-glue.

The parts are made of polystyrene, if you use super-glue in combination with activator spray, please be aware that the activator spray can destroy polystyrene – because of that you should use it very carefully or use only polystyrene-glue.

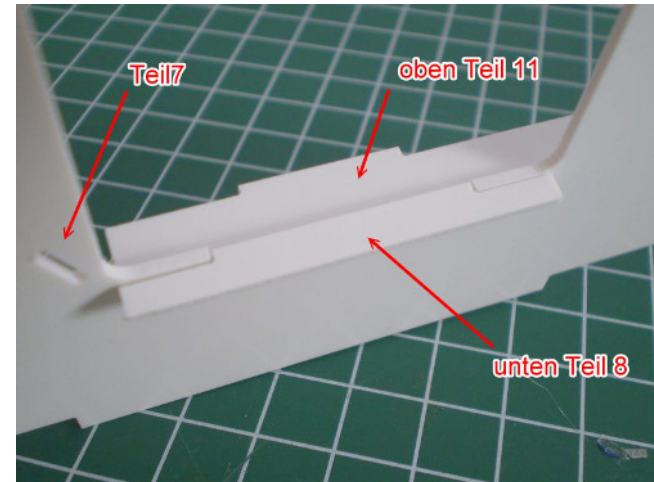
## Overview



Components with position numbers

## The kit consists of three assemblies

### Assembly 1 (bottom):

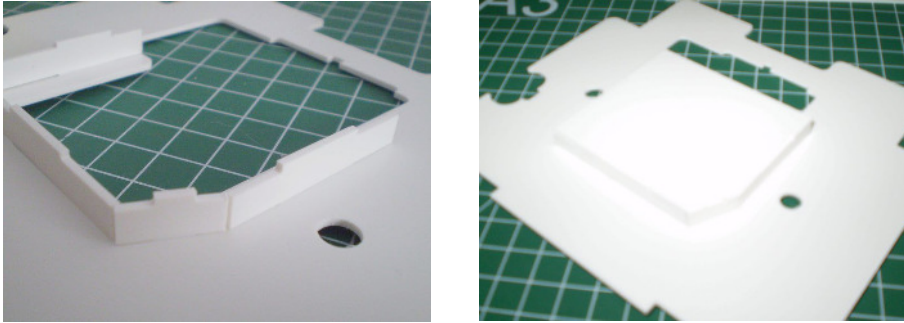


View from the bottom to the front

The wall part (11) is first glued to the floor (7) flush and at right angles. The recess provided in part (7) helps in the positioning.

The part is to page up right - noted in the picture the position of the oblique small slot.

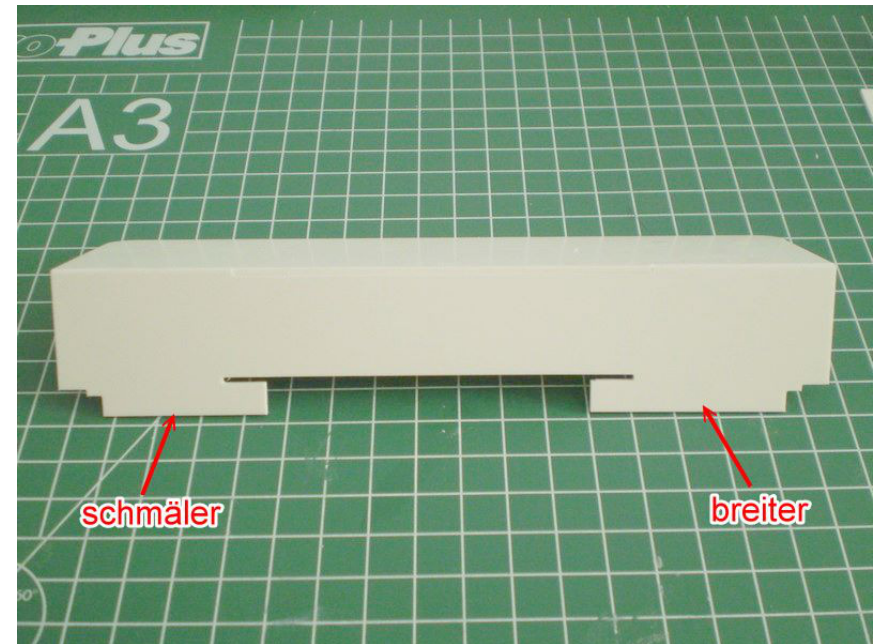
Subsequently, the positioning aid 8 is inserted into the remaining depression in front of part (11) in the ground and glued at right angles.



The wall parts (9), (12) and (13) are put into the slots provided in the bottom (7), as shown in the figure above - and glued flush and at right angles.

The lid (10) can be placed on the sample. If everything fits, this can also be glued from below.

### Assembly 2 (bed):

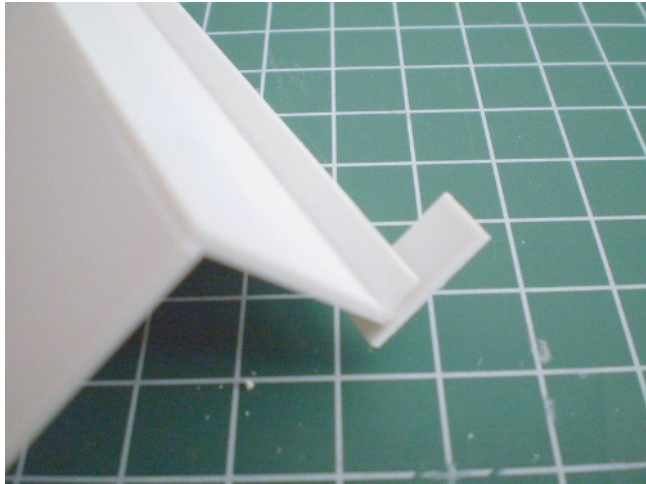


Glue the bed (1) to the back wall (2) at right angles (figure above).

Make sure that the narrow tab is on the left.

Then glue the trim strip (3) in the longitudinal slot - also observe the direction here.

### Assembly 3 (support):



Now the two L-shaped supports (4) can be glued underneath the rear wall - flush with the outside - wider L-parts to the front and narrower to the inside.

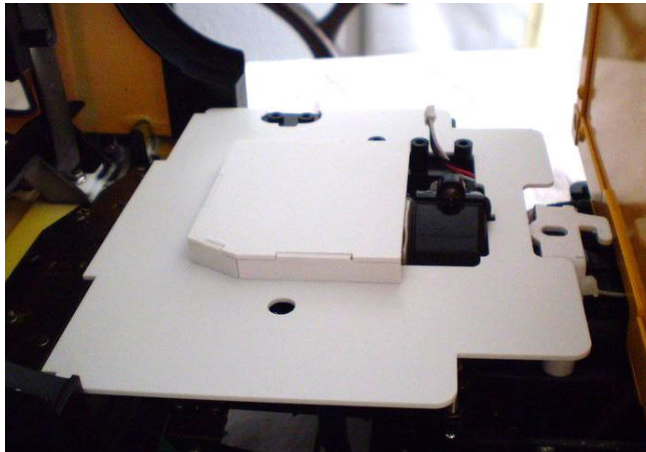


Parts (5) and (6) as shown above and glue them at right angles.

This can be used to fix the bed to the driver's cab or fix it with double-sided adhesive tape.

In front, the two L-rests lie on the mudguard.





You can see clearly how the rear of the cab is fitted to the gearbox housing - the molding (8) dips into the gap between the black floor plate at the front. The floor can be fixed with double-sided adhesive tape.



#### **Annotation:**

Good luck and have fun - your MDTechShop team

[www.MDTechShop.de](http://www.MDTechShop.de)

For questions or replacement part requests please send a short e-mail.

#### **Warning:**

**This is not a toy! It contains small parts! Keep it away from young children!**