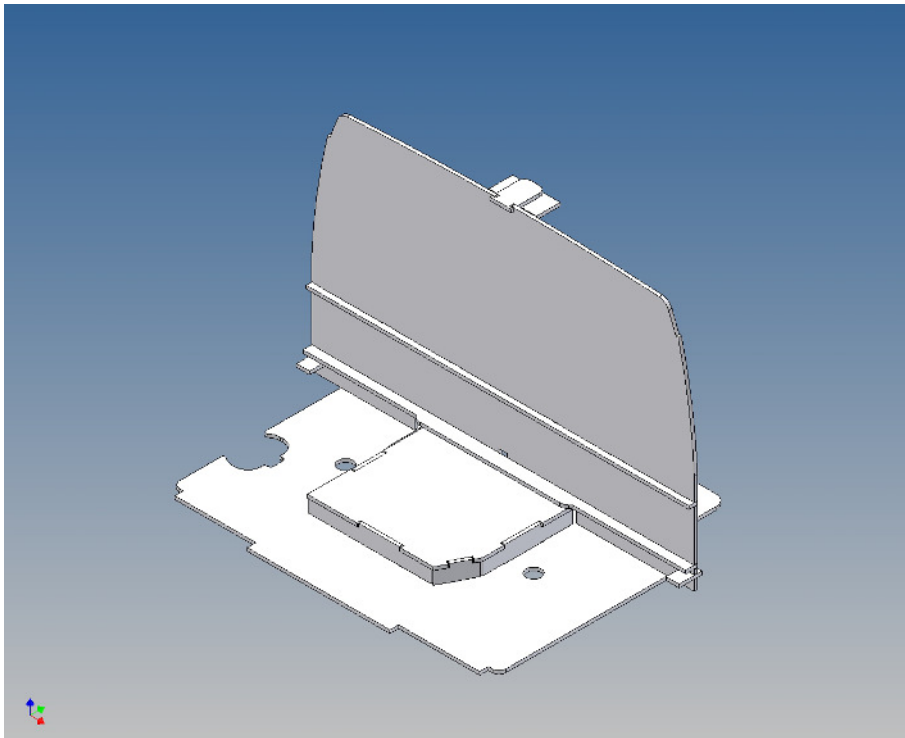


Assembly Instruction

Driving cab floor assembly kit for TAMIYA Mercedes Benz 1838 / 1850 (1:14,5) - dividing wall -

Best.-Nr.: 2014-9002-05



Version 1.0 – 23.12.2015

General Description

This kit includes parts for a driving cab floor for the TAMIYA MB 1838 / 1850.

The floor consists of two parts and is placed on the existing base plate and partly in the driver's cab.

The partial set obscures the view through the front window on the technology.

The installation of the tipper can be left there, as provided in the kit.

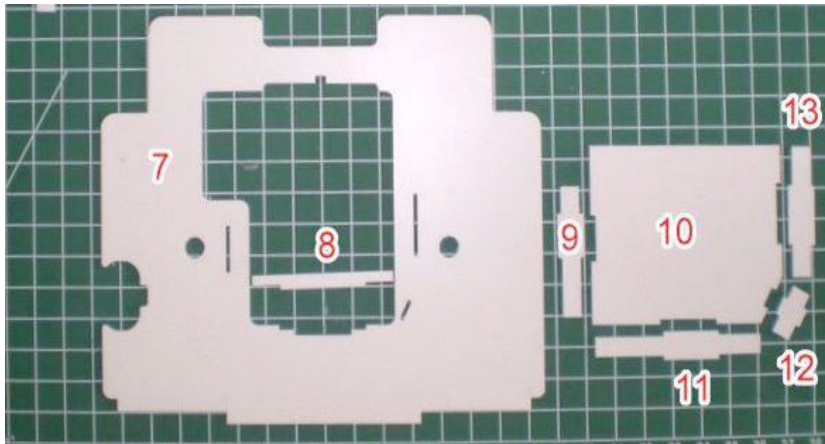
Assembly Procedure

Before you put the parts together please read the assembly instructions carefully and pay attention to the assembly sequence and test the fitting accuracy of the parts before gluing them together.

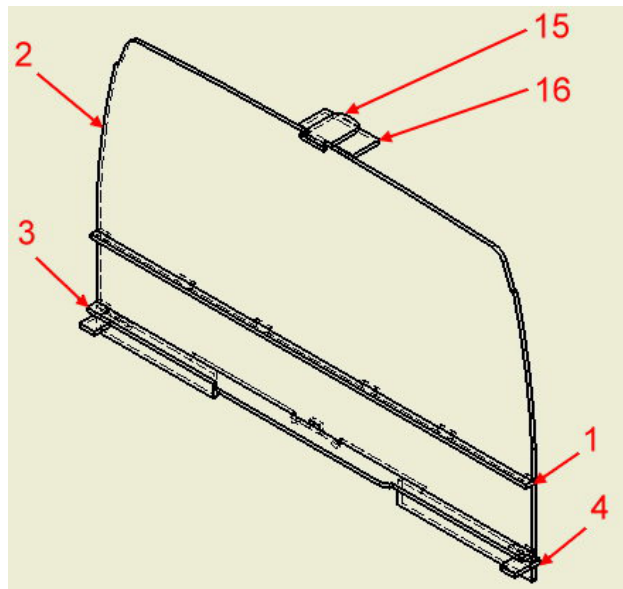
It is helpful to fix the parts at first only on a few points with super-glue and after a check along the edges fully with super-glue or a polystyrene-glue.

The parts are made of polystyrene, if you use super-glue in combination with activator spray, please be aware that the activator spray can destroy polystyrene – because of that you should use it very carefully or use only polystyrene-glue.

Overview



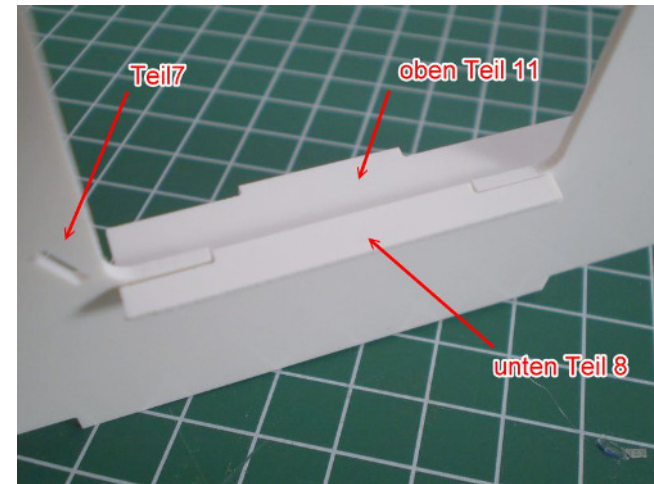
Components with position numbers floor



Components with position numbers dividing wall

The kit consists of two subassembly

Assembly 1 (floor) :

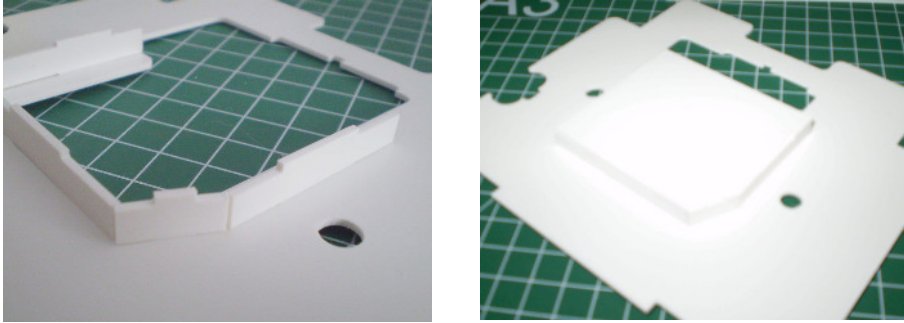


Bottom view

The wall part (11) is first glued to the floor (7) flush and at right angles. The recess provided in part (7) helps in positioning.

The part should be top right up - noted in the picture the position of the oblique small slot.

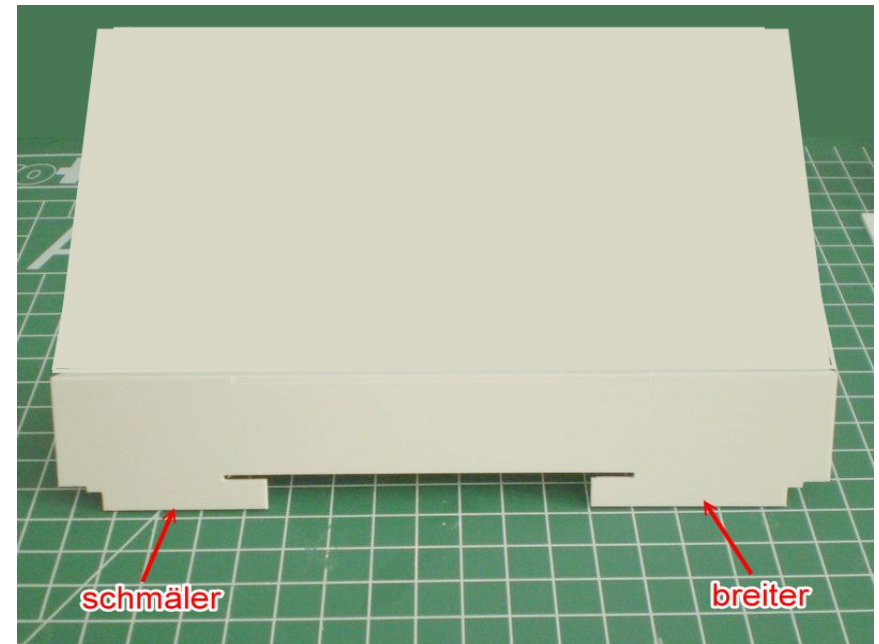
Subsequently, the positioning aid 8 is inserted into the remaining recess in front of the part (11) in the ground and glued at right angles



The wall parts (9), (12) and (13) are put into the slots provided in the bottom (7), as shown in the figure above - and glued flush and at right angles.

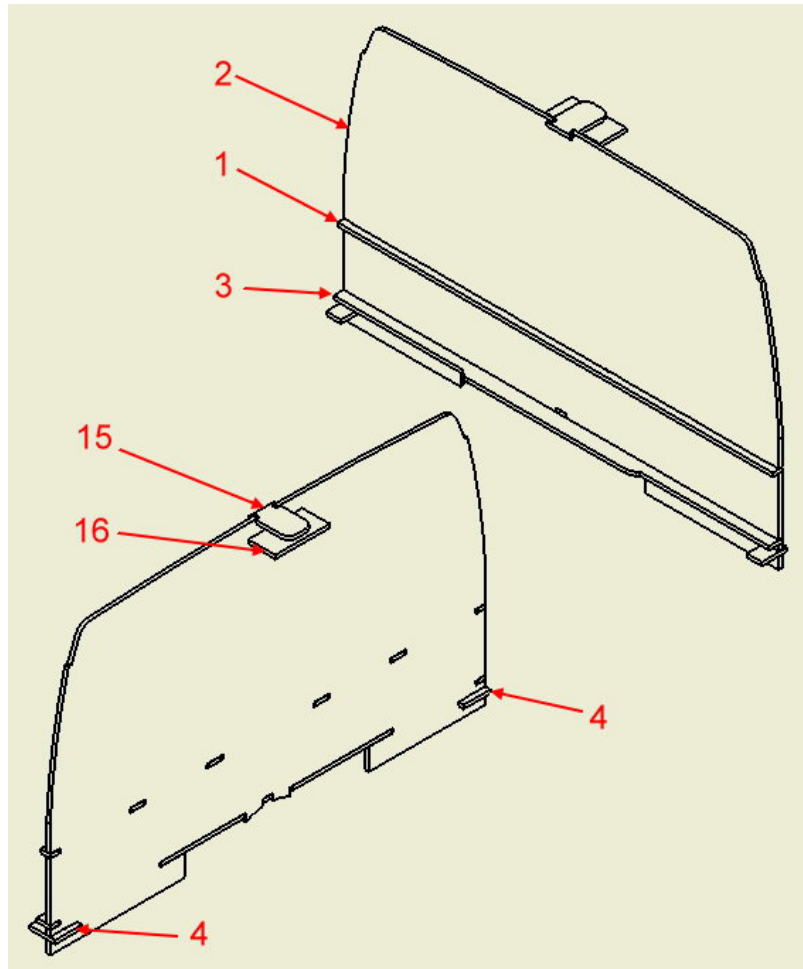
The lid (10) can be placed on the sample. If everything fits, this can also be glued from below.

Assembly 2 (dividing wall) :



When constructing the partition, make sure that the narrower tab of the partition, as seen from the windshield, is on the left.

(1) into the slots of the partition wall (2). Make sure that the left is the narrower tab. Then glue the panel (3) in the longitudinal slot - also observe the direction here.

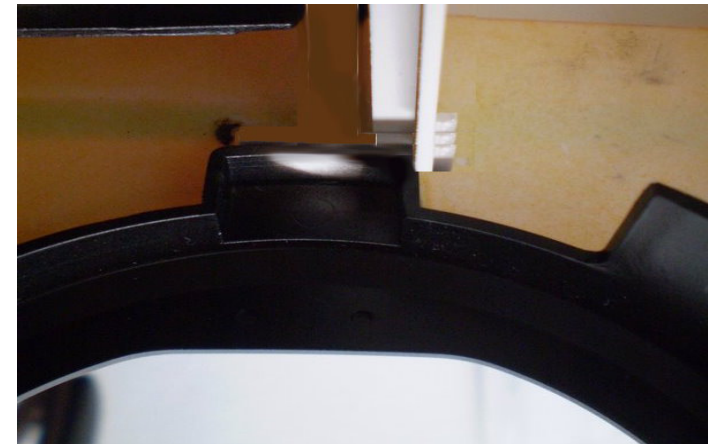
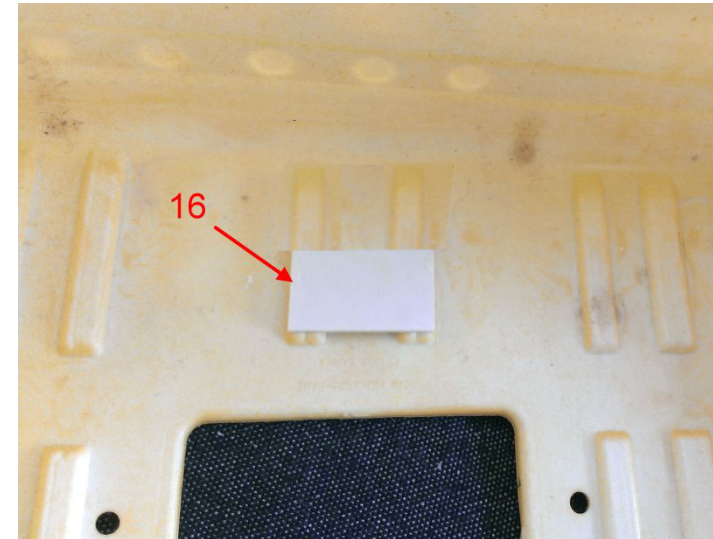


Now the two L-shaped supports (4) can be glued underneath the rear wall - flush with the outside - wider L-limbs to the front and narrower to the inside.

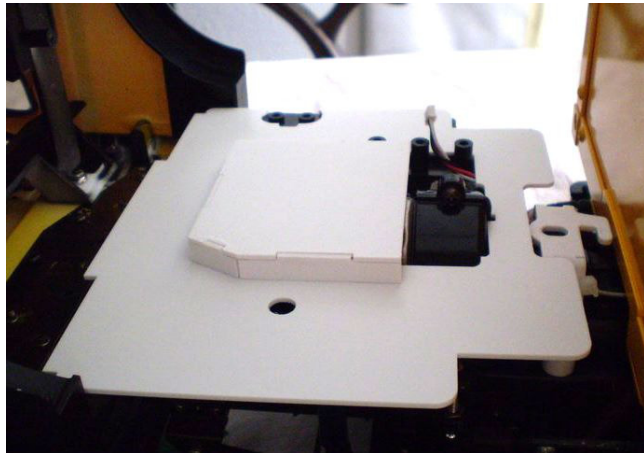
Now the holder (15) is placed on the partition and glued.

To mount the partition in the driver's cab, the clamp (16) is glued flush to the front of the roof at the front.

Here, the partition is later interposed from the front and lies flush to the rear and to the left and right of the mudguards.



Here you can see clearly how the rear of the cab is fitted to the gearbox housing - the molding (8) dips into the space between the black base plate at the front. The floor can be fixed with double-sided tape.



Annotation:

Good luck and have fun - your MDTechShop team

www.MDTechShop.de

For questions or replacement part requests please send a short e-mail.

Warning: This is not a toy! It contains small parts! Keep it away from young children!