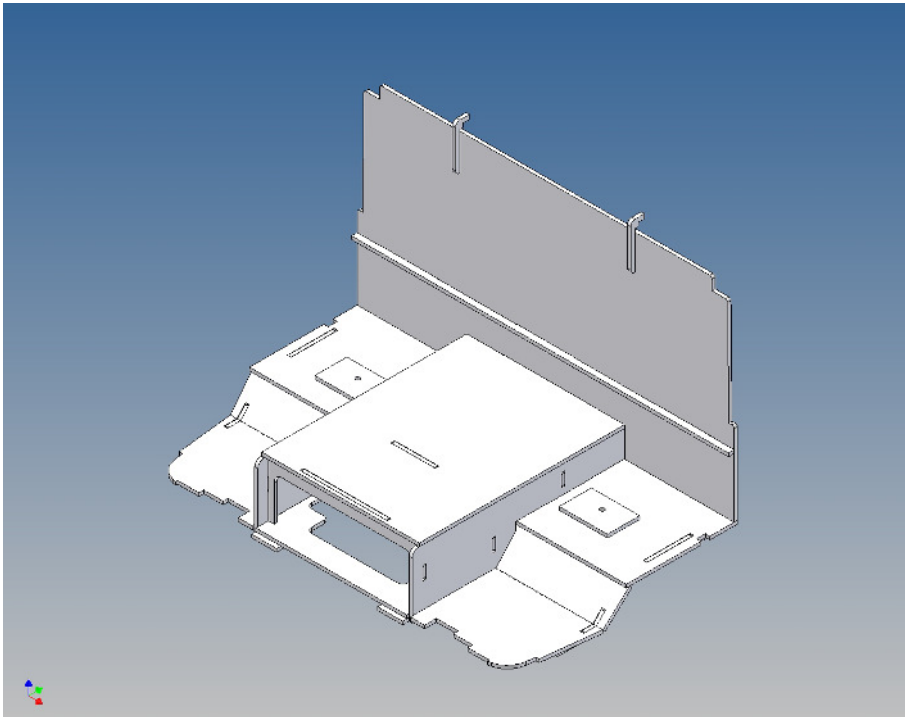


Assembly Instruction

**Driving cap floor assembly kit for
TAMIYA Scania R470/R620 (1:14,5)
- dividing wall + seat holder -**

Best.-Nr.: 2014-9001-05



Version 1.3en – 13.12.2015

General Description

This kit includes parts for a driving cab floor for the TAMIYA Scania R470 (4-wheeler) or the Scania R620 (6-wheeler).

The cab floor will be mounted under the original driver seat holder to hide the view onto the RC equipment through the windshield.

The dividing wall hides the rear part of the cabine and therefore it is easier to use the MFC-xx unit.

For use of a speaker in the cabine roof you should cut a piece of sheet out of the dividing wall at will.

The original platform above the electric motor should be removed, additionally we have an electronic box in our shop to optimize the space under the driver cabin for RC devices.

For positioning the driver cabin's tilt limiter we have put a template on the cabin floor, so that the tilt limiter rod is no longer visible inside of the cabin.

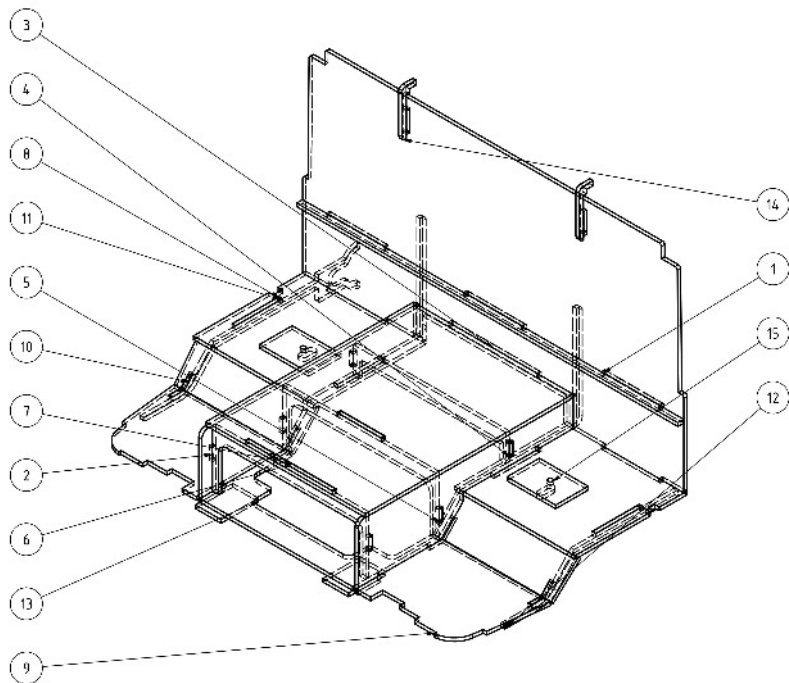
Assembly Procedure

Before you put the parts together please read the assembly instructions carefully and pay attention to the assembly sequence and test the fitting accuracy of the parts before gluing them together.

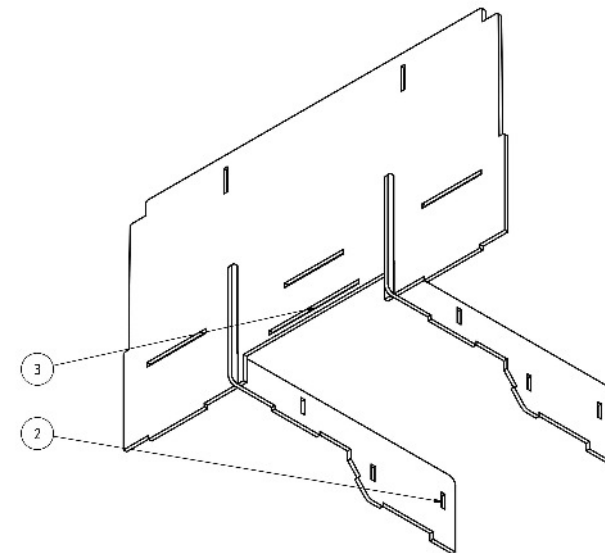
The parts are made of polystyrene, if you use super-glue in combination with activator spray, please be aware that the activator spray can destroy polystyrene – because of that you should use it very carefully or use only polystyrene-glue.

It is helpful to fix the parts at first only on a few points with super-glue and after a check along the edges fully with super-glue or a polystyrene-glue.

9001-05 Zusammenbau (FHB mit Sitzhalter und Trennwand)



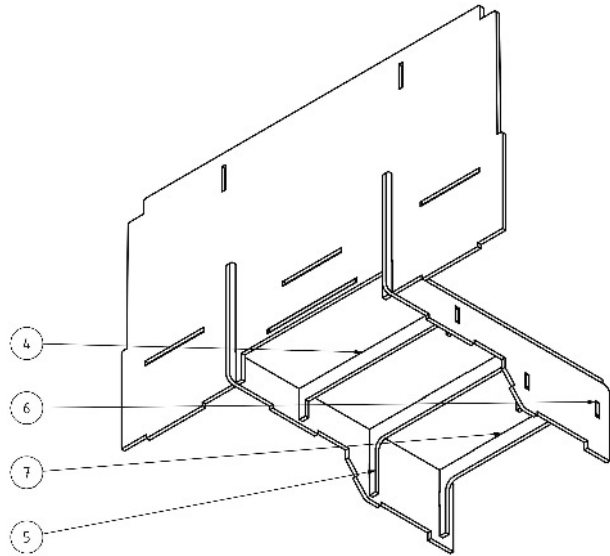
Step 1:



Glue the side parts (2) to the dividing wall (3) right-angled and flush fitting.
The slots in part (3) would be helpful for this action

Teilleiste		
Pos. Anz.	Bezeichnung	Bemerkung
1 1	01 Liegenboden (FHB mit Trennwand)	
2 2	02 Seiten teil (FHB mit Rückwand)	
3 1	03 Trennwand (FHB mit Trennwand)	
4 1	04 Stützteil hinten (FHB mit Trennwand)	
5 1	05 Stützteil mittig (FHB mit Trennwand)	
6 1	06 Stützteil vorn (FHB mit Trennwand)	
7 1	07 Motorraumabdeckung (FHB mit Trennwand)	
8 2	08 Bodenplatte für Sitze (FHB mit Trennwand)	
9 1	09 Bodenplatte vorn (FHB mit Trennwand)	
10 2	10 Fußraumteil (FHB mit Trennwand)	
11 1	11 Füße lte rechts - Gabel (FHB mit Trennwand)	
12 1	12 Füße lte links (FHB mit Trennwand)	
13 2	15 Unterlegblättchen (FHB mit Trennwand)	
14 2	16 Haken (FHB mit Trennwand)	
15 2	20 Einlegeblättchen für Sitzhalter (FHB mit Trennwand)	

Step 2:



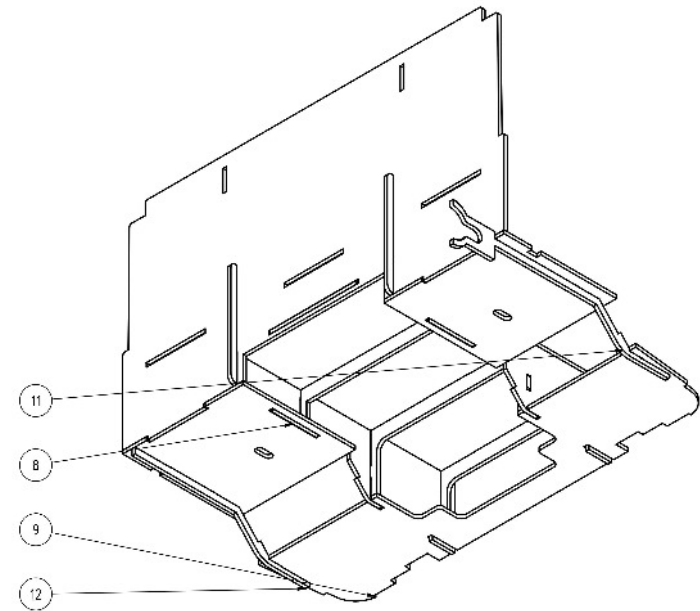
Fitting the support parts (4) to (6).

Make sure that the support parts (4) to (6) are glued flush to the top edge of the side parts (2) and in right angle so that the engine compartment cover (7) can be glued flush onto the side parts (2) later.

Then glue the engine compartment cover (7) from below to the side parts (2) and the supports (4) to (6).

Please take care that it is flush glued because it's visible later.

Step 3:

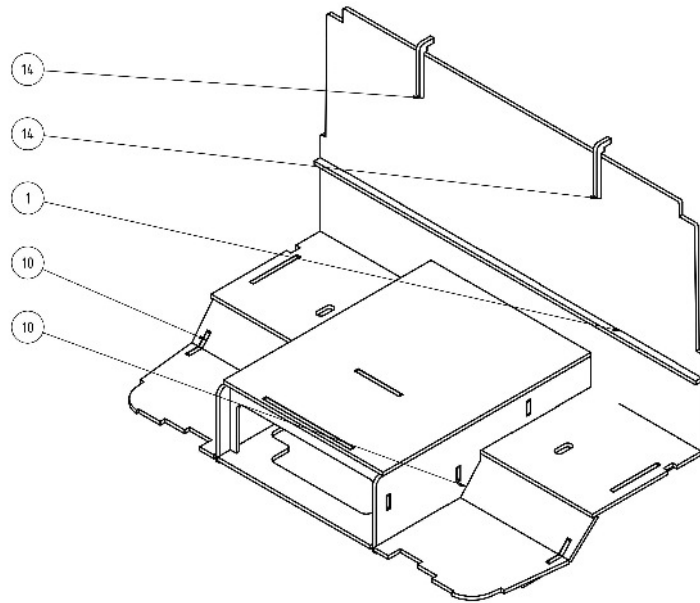


Mount the floor parts (8) (left and right) and the front cap floor (9) on the slots provided or respectively on the form elements, align and glue them together.

Fit and glue the joining aids with fork (11) (right in direction of travel) and (12) (left in direction of travel).

The fork of the right joining aid can after positioning the driver cabin's tilt limiter be removed.

Step 4:



Mount the footwell parts (10) (left and right) between the side parts (2) and the joining aids (11) and (12) respectively.

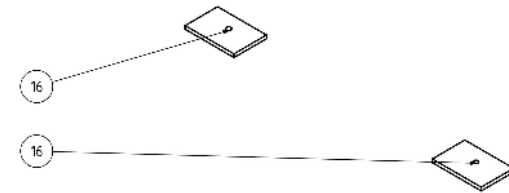
Make sure that the oblique small side of the parts (10) lies to the outer side, and that at the visible edge (bottom front) if possible no slit can be seen.

Then glue the footwell parts (10) in position.

Put each dividing wall hook (14) in the respectively slit of the wall. See picture above.

Also glue the bed imitation (1) from the front side in the slits of the wall.

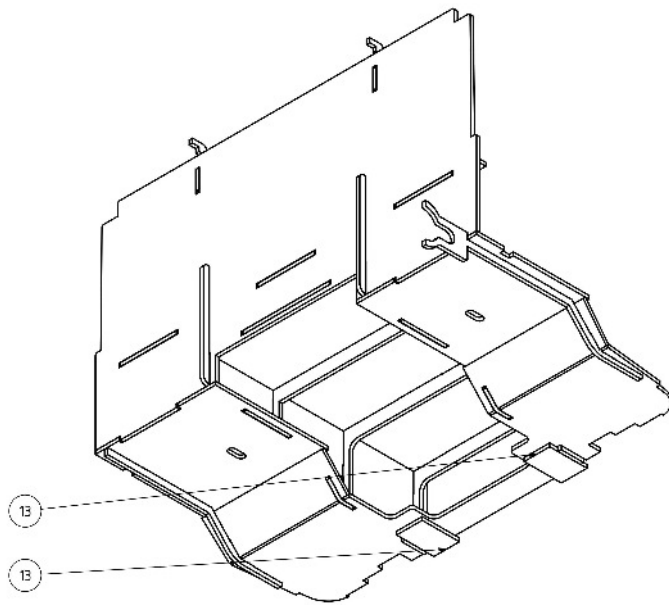
Step 5:



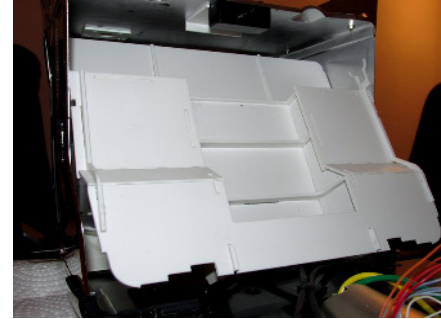
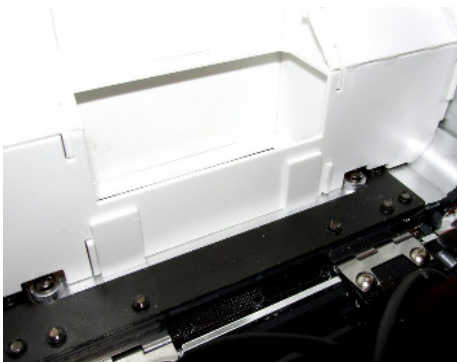
For a additional fixation of the drivers cab floor we have two plates (16) which be mounted below the original driver seat holder.

Later you can fix the cab floor with two screws.

Step 6:



In order to better fit the two rectangular leaflets (15) are attached at will.



You can clearly see how the cab floor is pushed from the front to the rear support and how the tilt limiter should be placed.

Subsequently, the floor is placed on the front tilting hinge, for easy removal there is no need to attach it further.

The picture above shows the cab floor version with the driver bed but it is similar.

Annotation:

For the use of the new Tamiya driver men you should have our special seat kit to eliminate the original seat holder.

An electronic box is also available in our shop which fits perfect to our cab floor.

Good luck and have fun - your MDTechShop team

www.MDTechShop.de

For questions or replacement part requests please send a short e-mail.

Warning:

This is not a toy! It contains small parts! Keep it away from young children!