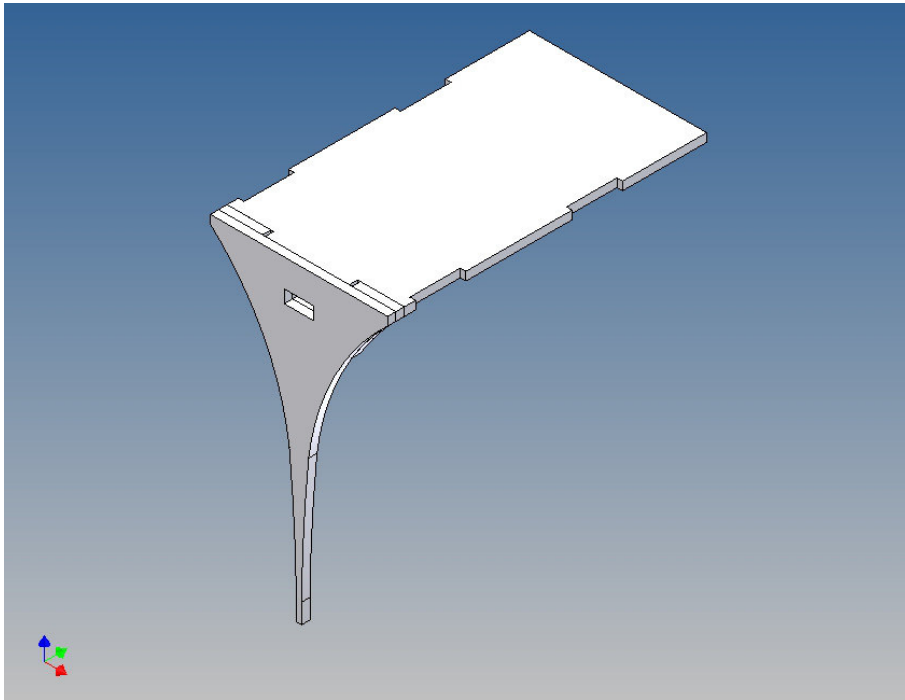


Assembly Instruction

**Kit Y-filler (2 pieces)
for TAMIYA Scania 3-axle (1:14)**

Best.-Nr.: 2016-9131-3A(Y)



Version 1.0 – 20.06.2016

General Description

This polystyrene-milled parts set for 2 filler is available as an accessory to the TAMIYA 3-axle trucks (1: 14.5) designed.

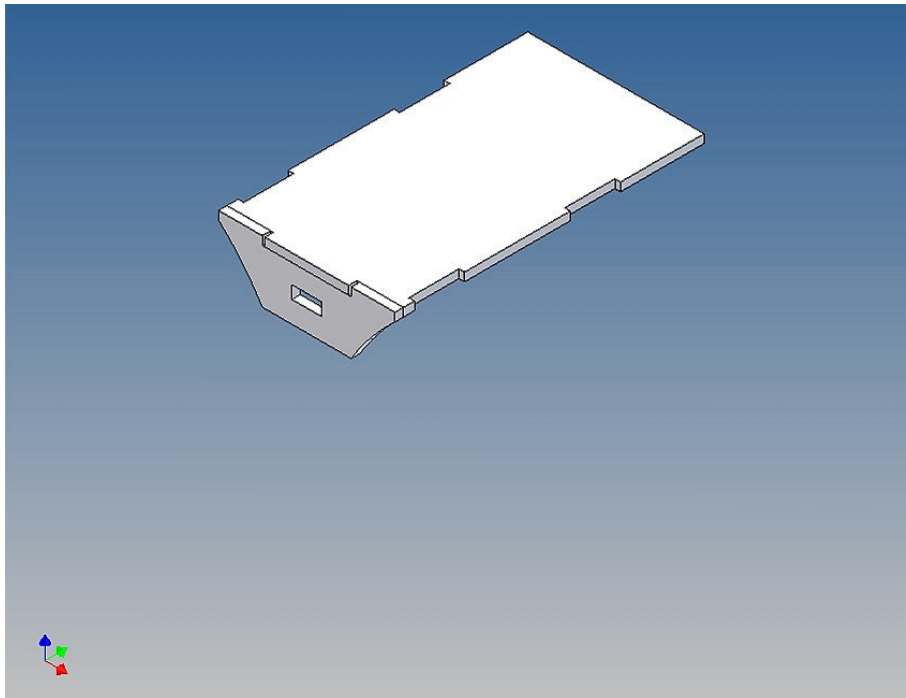
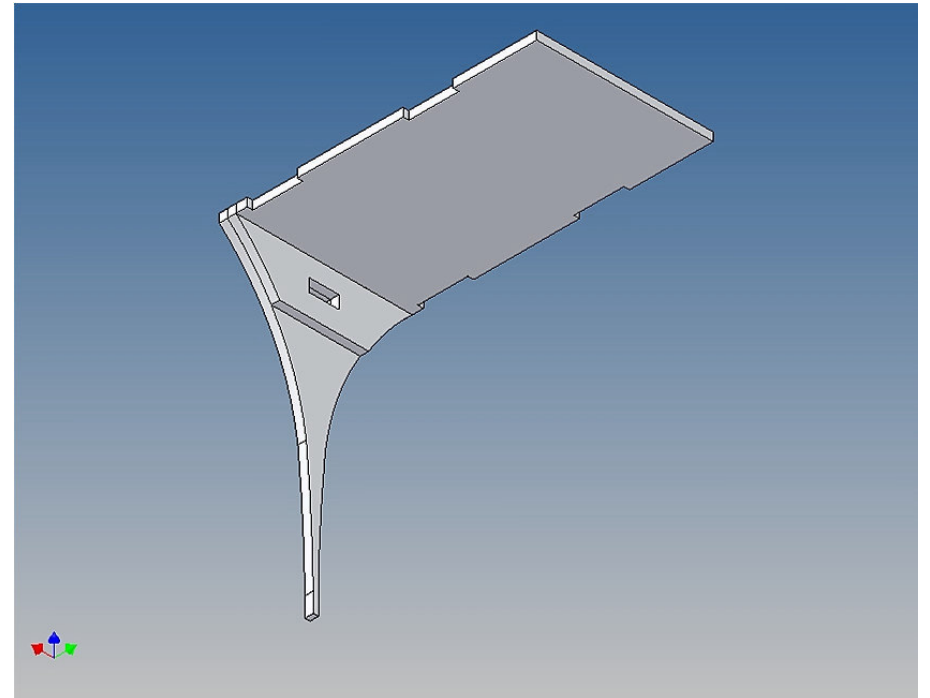
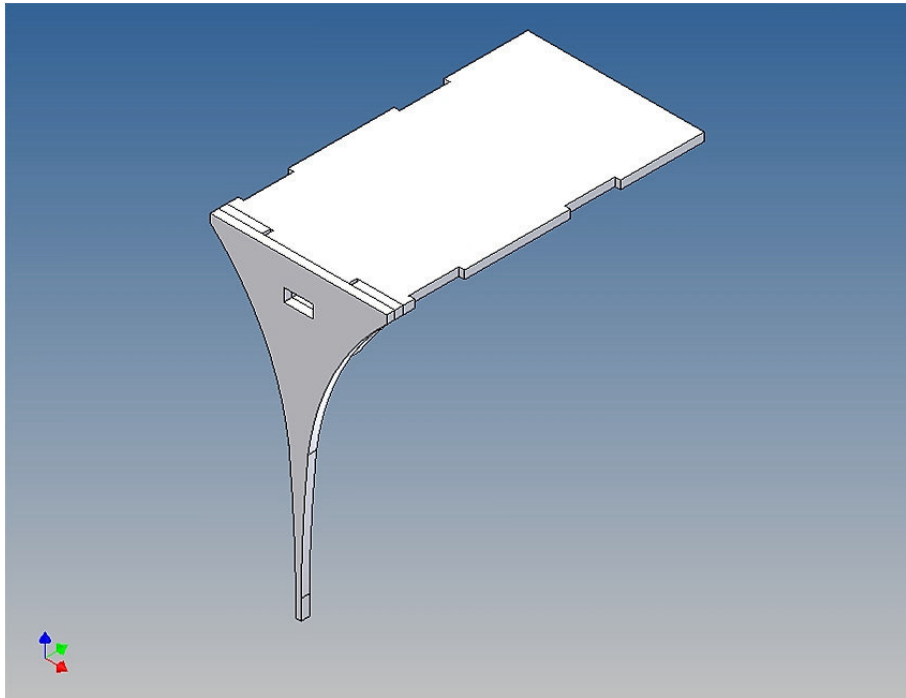
They are mounted between the wings of the double axes and offer the possibility of having a LED (2x5x7mm, not included) to be fitted.

Assembly Procedure

Before you put the parts together please read the assembly instructions carefully and pay attention to the assembly sequence and test the fitting accuracy of the parts before gluing them together.

It is helpful to fix the parts at first only on a few points with super-glue and after a check along the edges fully with super-glue or a polystyrene-glue.

The parts are made of polystyrene, if you use super-glue in combination with activator spray, please be aware that the activator spray can destroy polystyrene – because of that you should use it very carefully or use only polystyrene-glue.



Annotation:

Good luck and have fun - your MDTechShop team

www.MDTechShop.de

For questions or replacement part requests please send a short e-mail.

Warning:

This is not a toy! It contains small parts! Keep it away from young children!