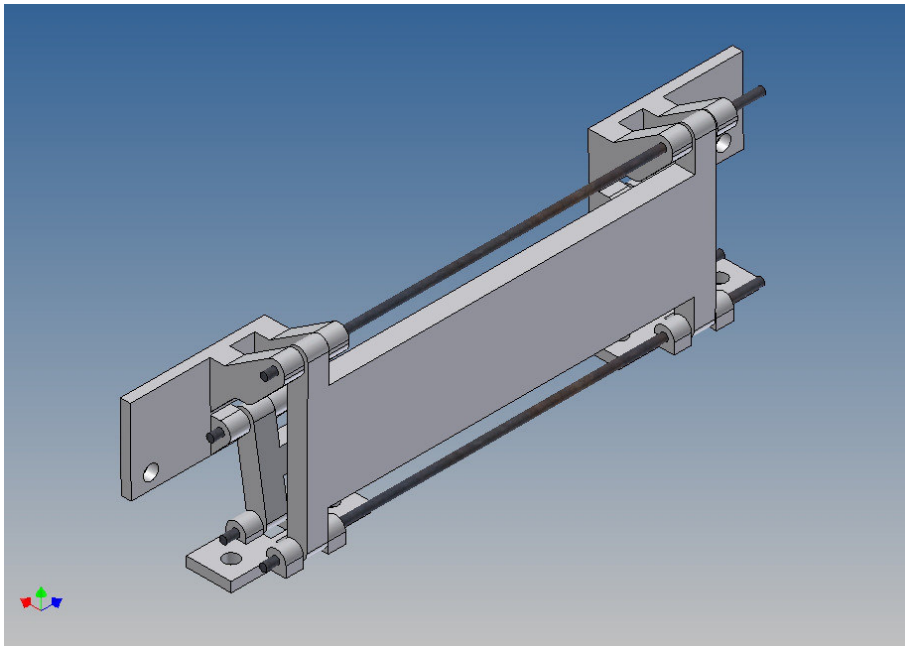


Assembly Instruction

**Hinge Set for the
TAMIYA Scania R470/R620 (1:14,5)
In connection with a Hauber conversion kit**

Best.-Nr.: 2017-9891-04



Version 1.0 – 23.12.2017

General Description

This kit is designed for a TAMIYA Scania cab in connection with a Hauber conversion kit.

The hinge set enables a Scania Hauber engine cowling to be tiltable by simple means.

The hinge set consists mainly of high-strength PLA (3D-printed).

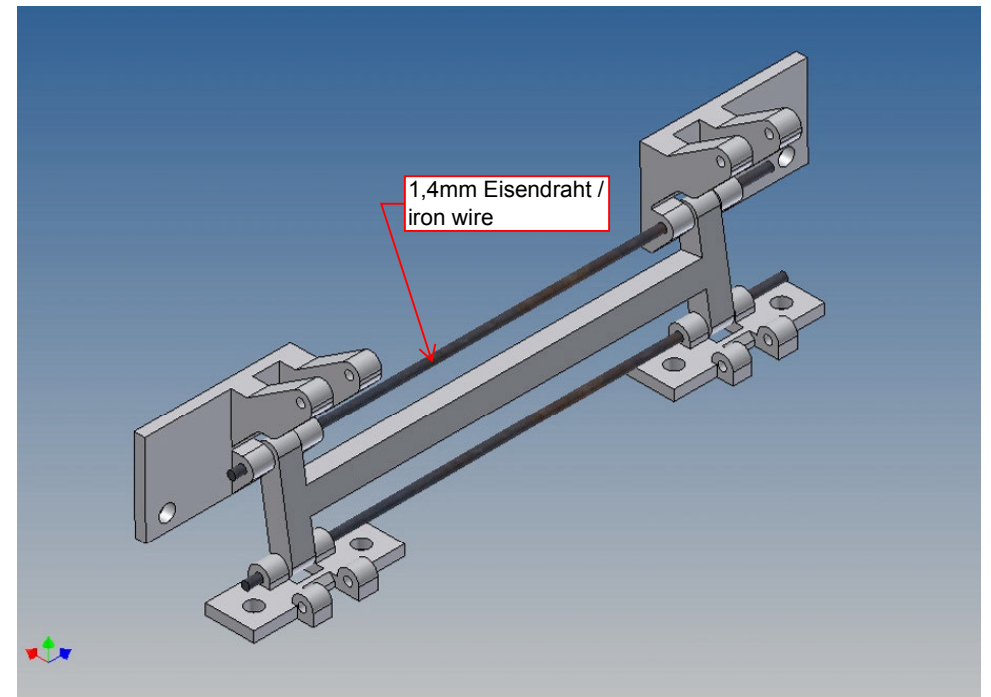
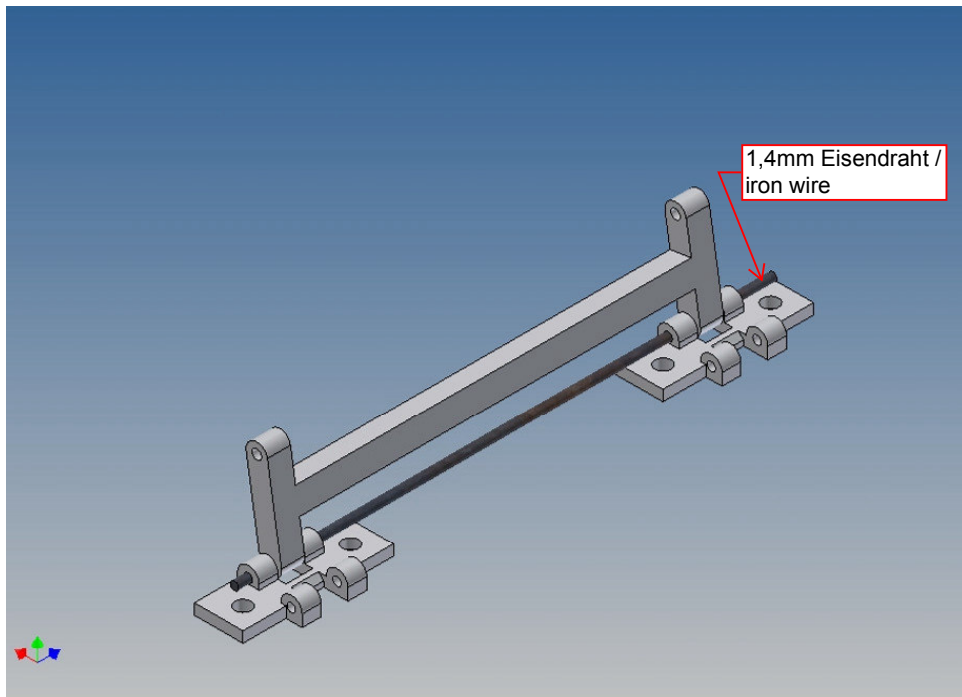
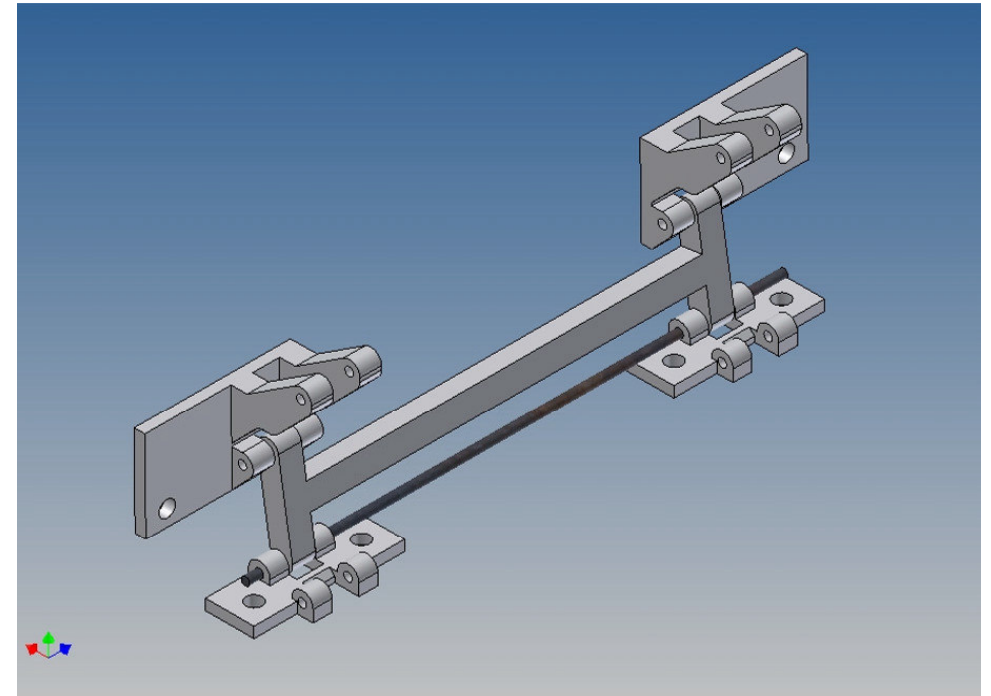
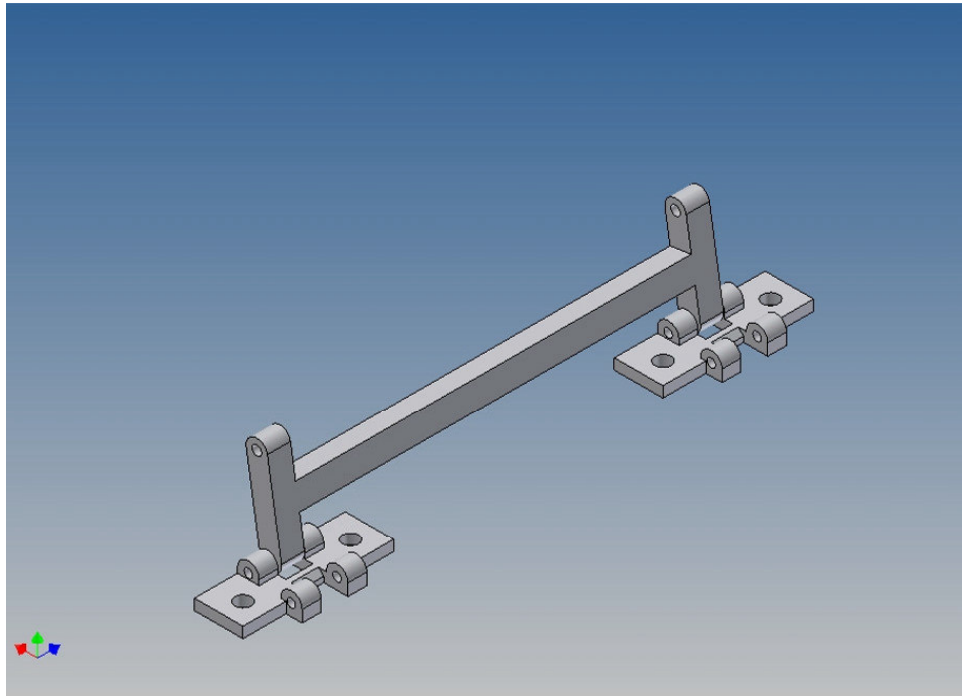
After assembly, the hinge is attached to the bumper stay A (orig. Tamiya designation from the building instructions) from the inside, screwed to the front of the Hauber bonnet. For this purpose, holes must be drilled into the front panel at one's own discretion.

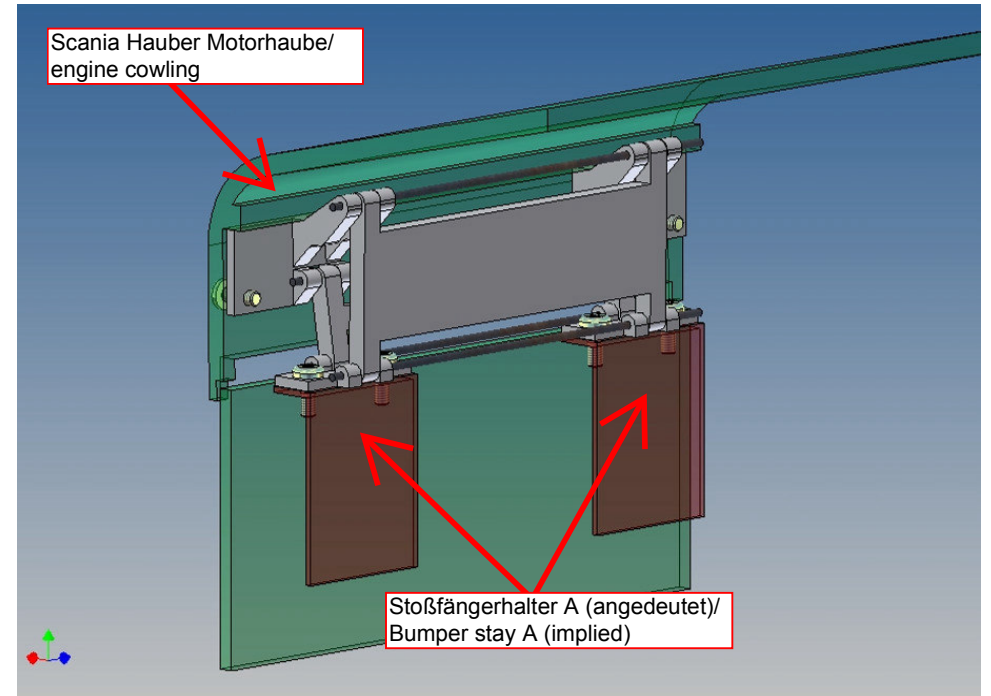
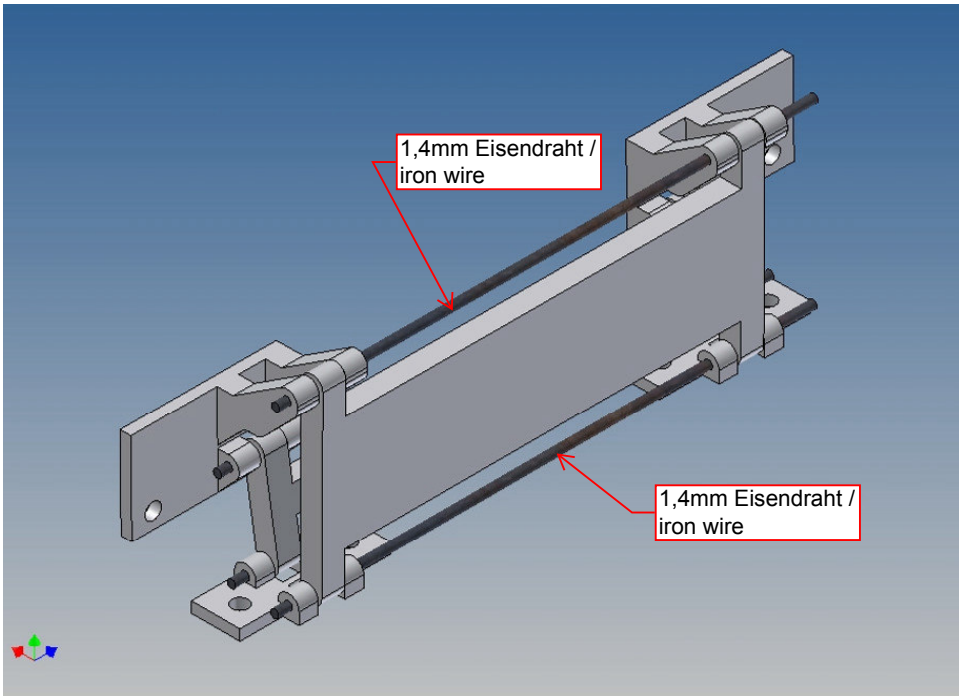
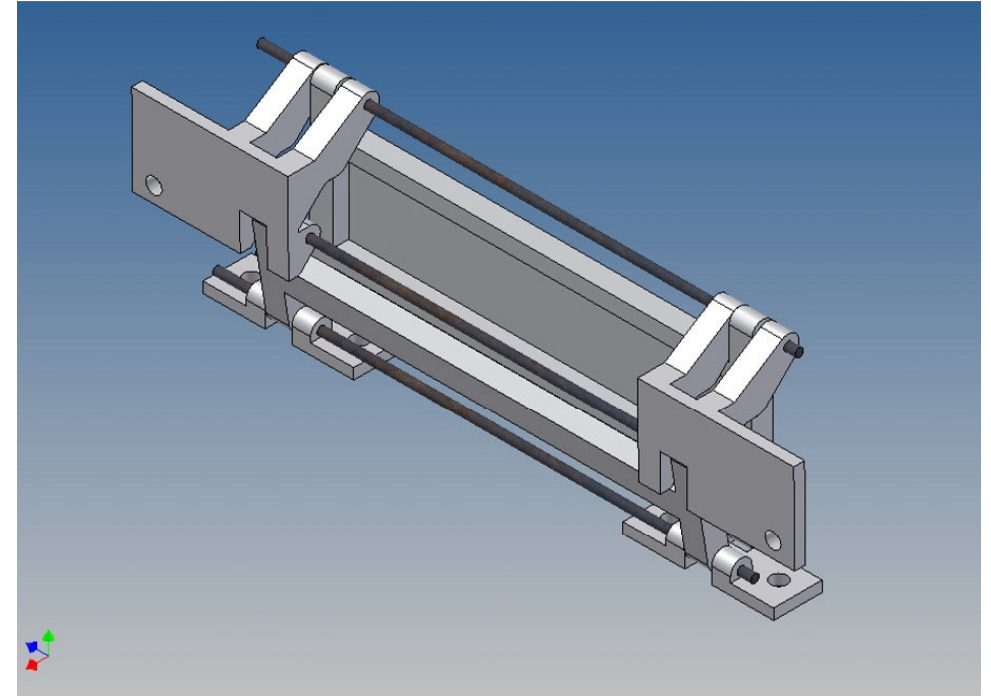
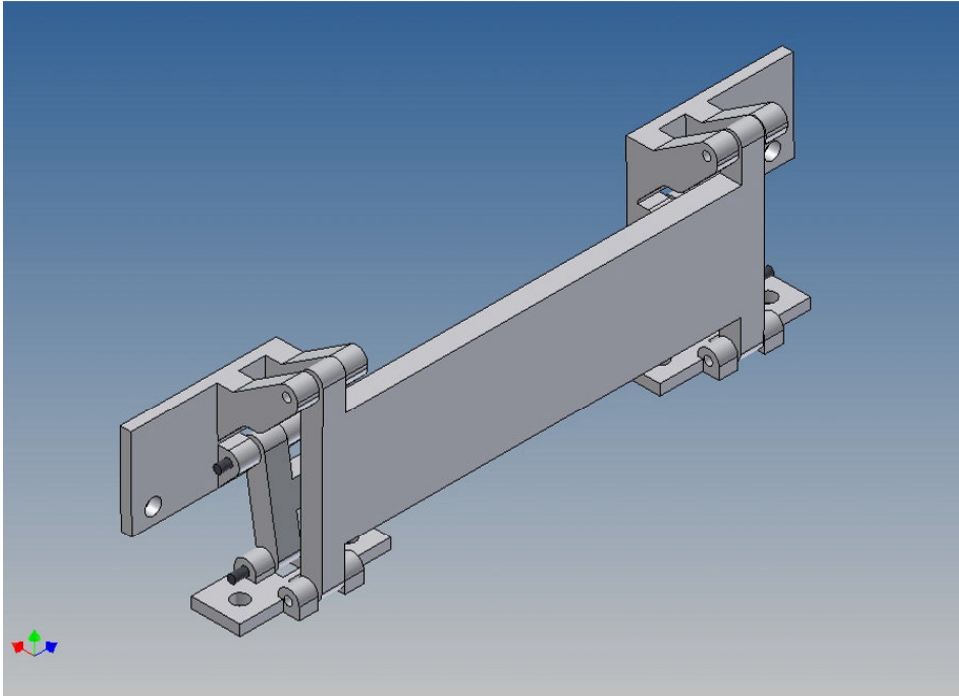
Assembly Procedure

Before assembling, please familiarize yourself with the sequence of parts, their position and fitting accuracy.

For the 1.4 mm iron wires, the corresponding bushings must be drilled out with a 1.5 mm drill bit.

The post-processing of the PLA parts is left to each model builder, depending on the accuracy of fit.





Annotation:

Good luck and have fun - your MDTechShop team

www.MDTechShop.de

For questions or replacement part requests please send a short e-mail.

Warning:

This is not a toy! It contains small parts! Keep it away from young children!