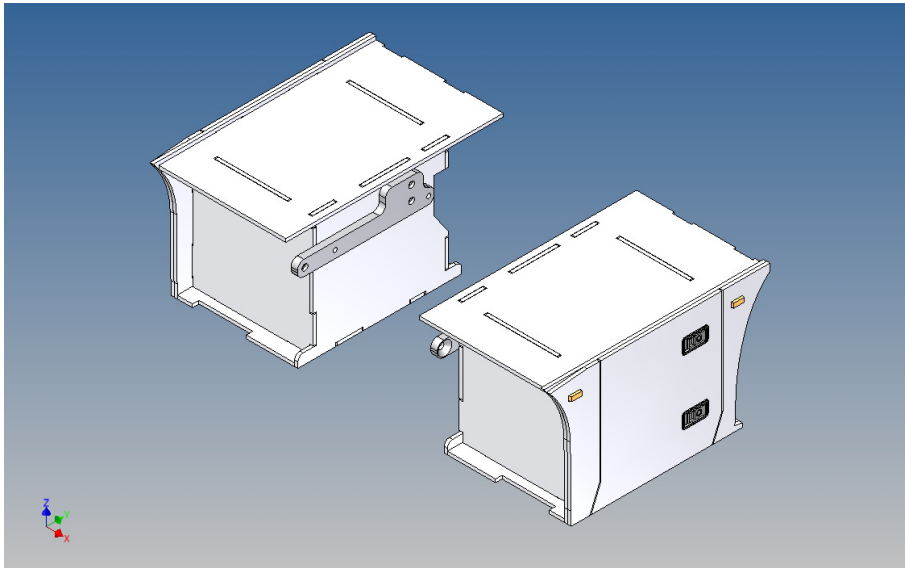


Assembly Instruction

Full profile box pair for Tamiya Scania 770S SLT 4-axle M1:14 variant 3

Best.-Nr.: 2022-913B-4AV3(L+R)



Version 1.0 – 29.06.2022

General Description

This polystyrene milling parts set for a pair of storage boxes is available as an accessory for Tamiya Scania 770S SLT 4-axle M1:14 designed.

The storage boxes can be mounted on the vehicle frame and have a removable lid on the outside that is held in place with 3 magnets (magnets are included in a separate bag).

Technology can be accommodated within the box.

For mounting on the vehicle frame, spacer pieces are included. These create a gap to create space for any screw heads on the frame.

Assembly Procedure

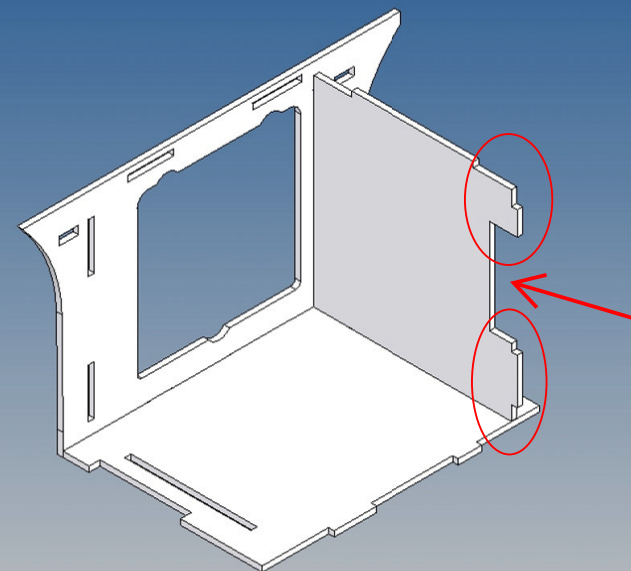
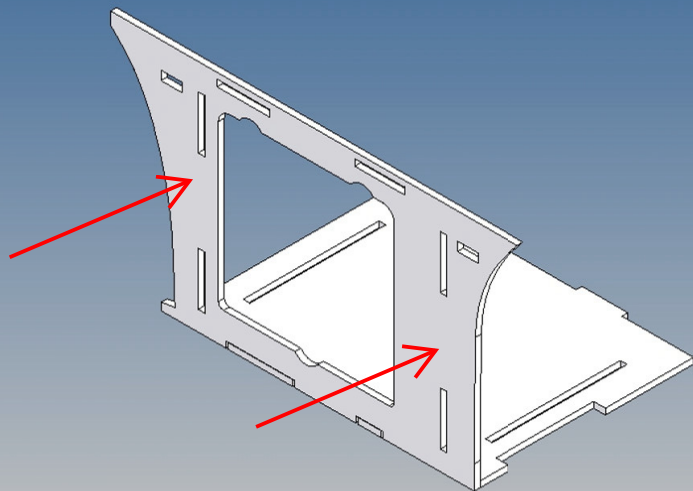
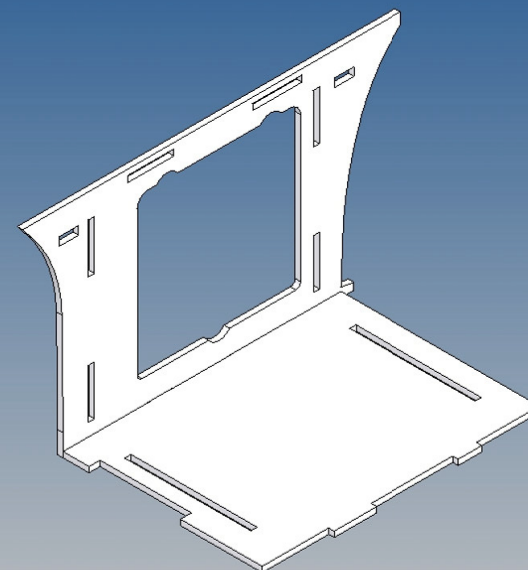
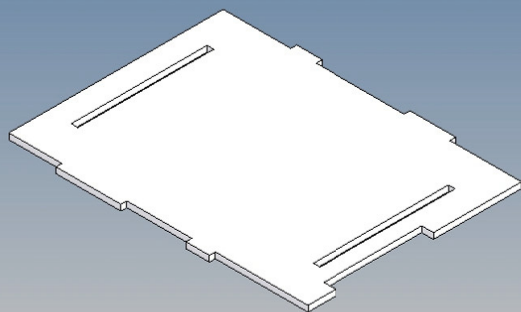
Before you put the parts together please read the assembly instructions carefully and pay attention to the assembly sequence and test the fitting accuracy of the parts before gluing them together.

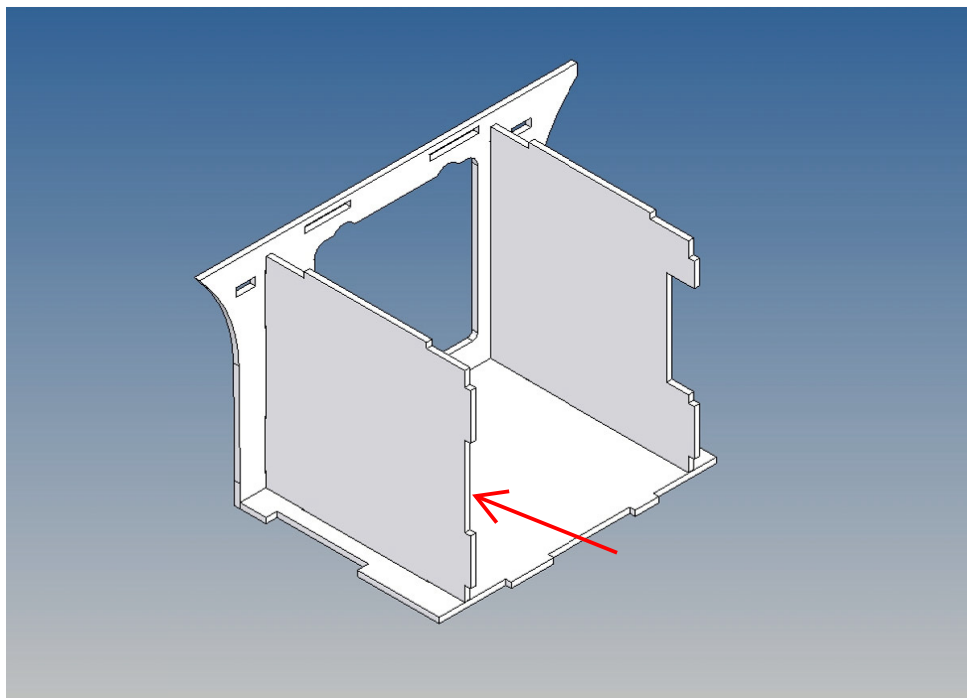
It is very important that at the first construction step paying attention to the correct side to put the box together, so that really produces a left or right box.

It is helpful to fix the parts at first only on a few points with super-glue and after a check along the edges fully with super-glue or a polystyrene-glue.

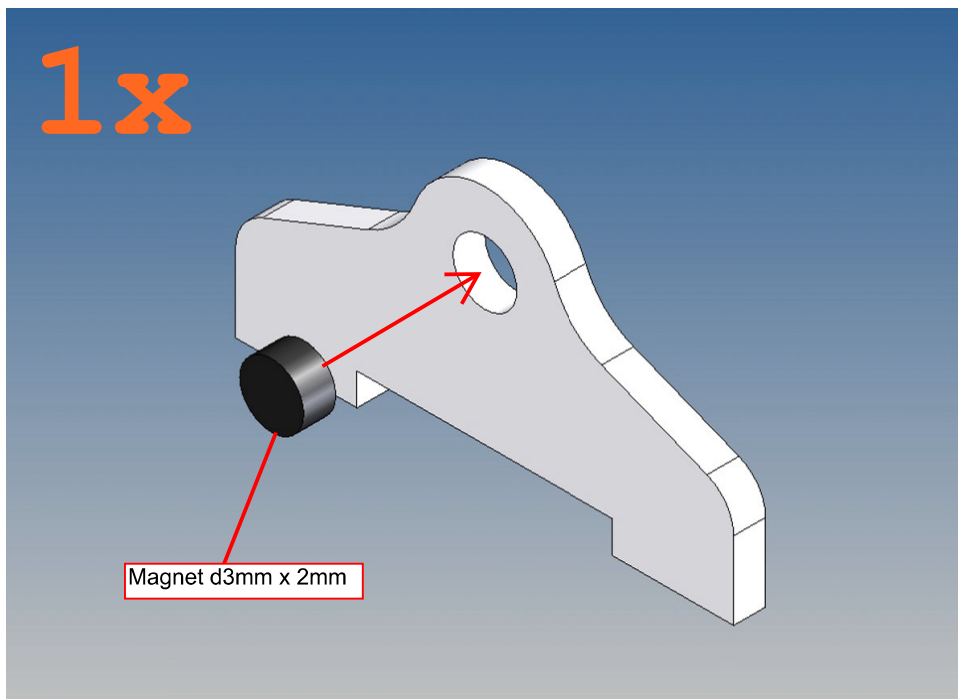
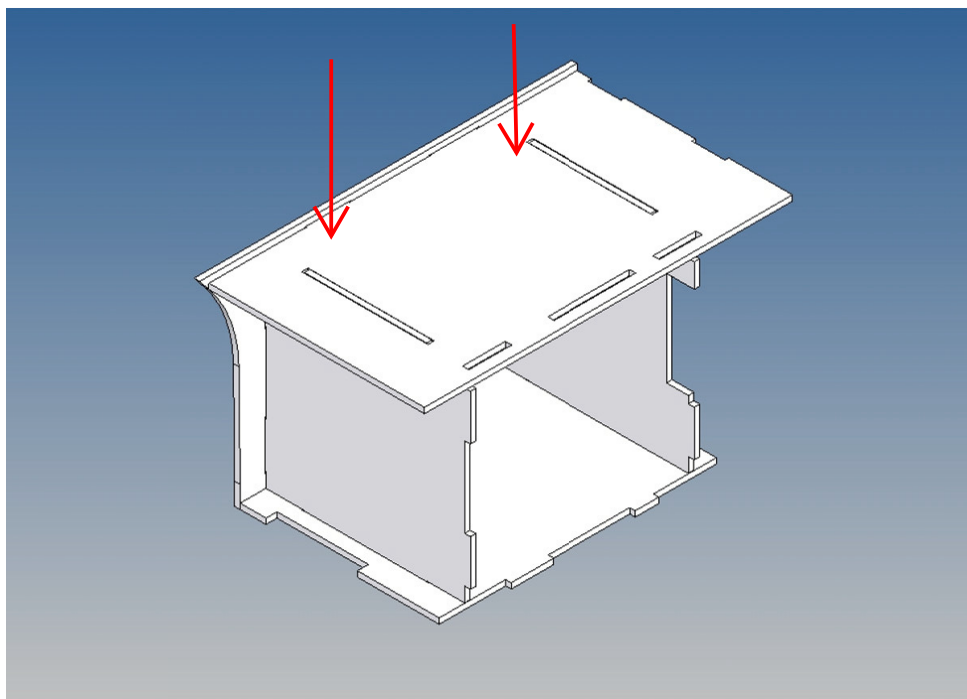
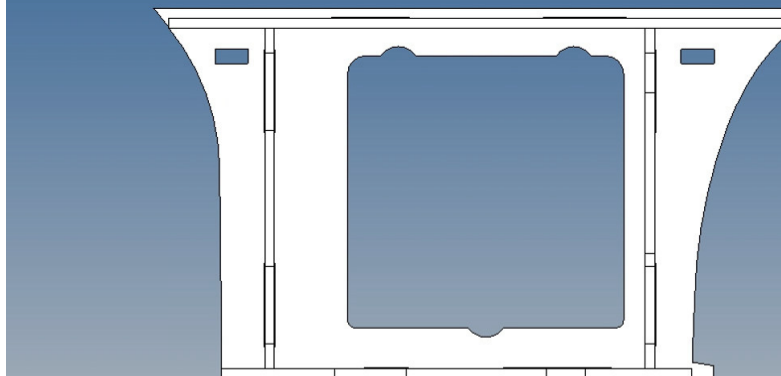
The parts are made of polystyrene, if you use super-glue in combination with activator spray, please be aware that the activator spray can destroy polystyrene – because of that you should use it very carefully or use only polystyrene-glue.

Bei diesen Bauschritten wird eine rechte (Beifahrerseite)
Staubox beschrieben. Für eine linke Staubox diese
Bauschritte gespiegelt zusammensetzen /
These construction steps describe a right (passenger side)
storage box. For a left storage box, assemble these
construction steps in a mirrored manner

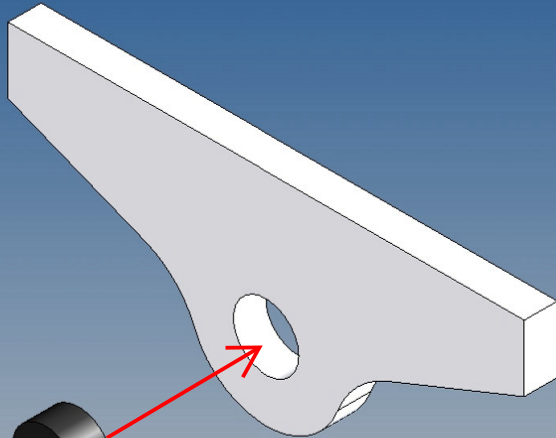




Ansicht der Staubox von
hinten (Innenseite) /
View of the storage box
from the back (inside)

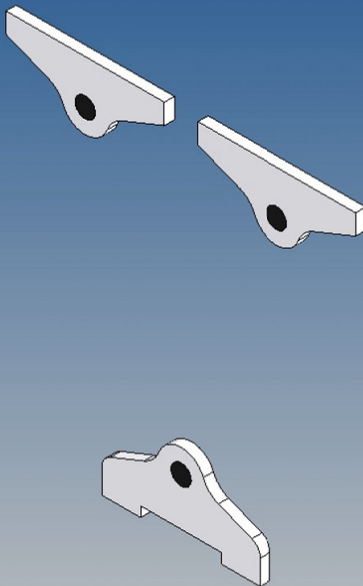


2x

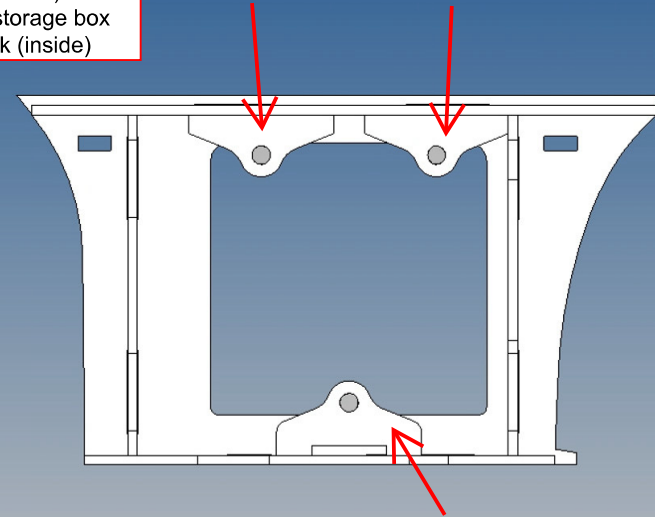


Magnet d3mm x 2mm

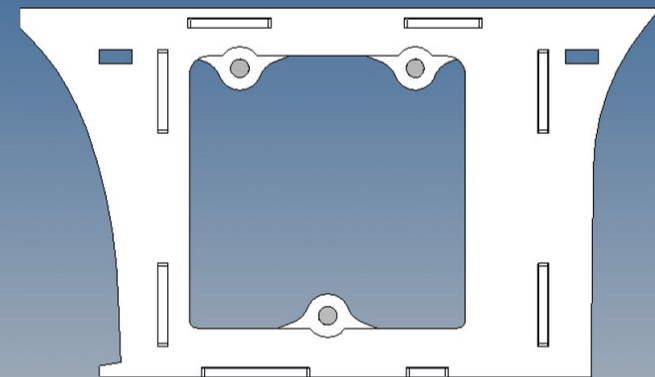
Endresultat /
End result

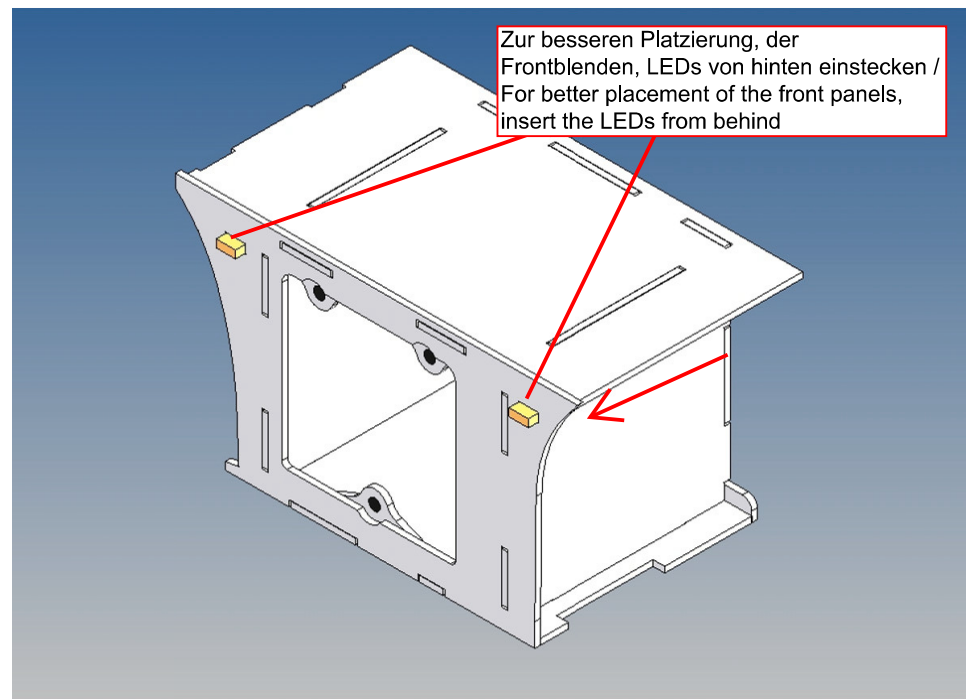
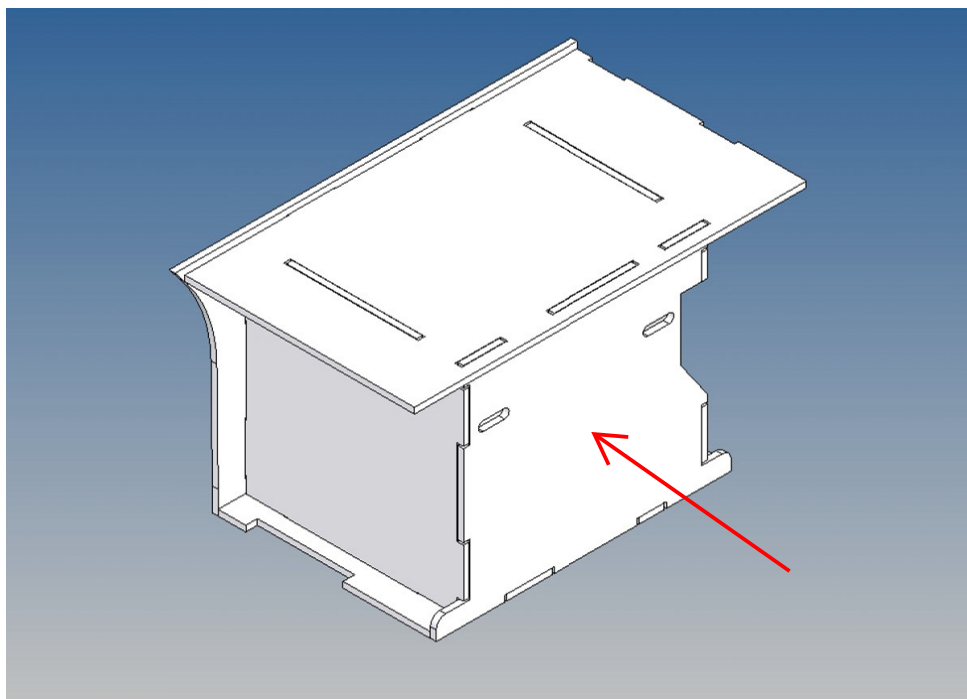
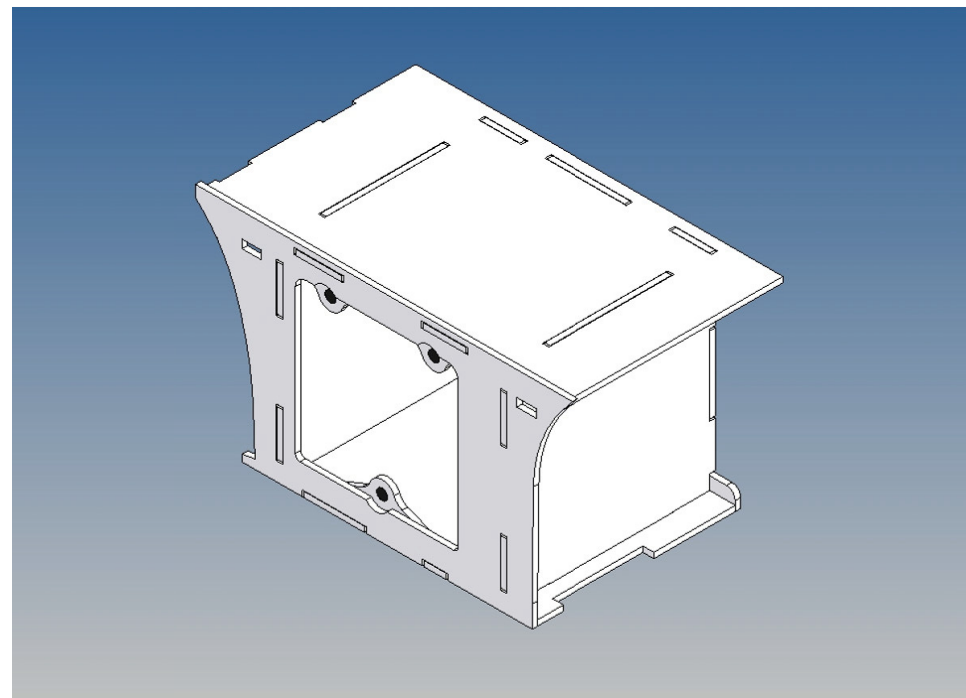
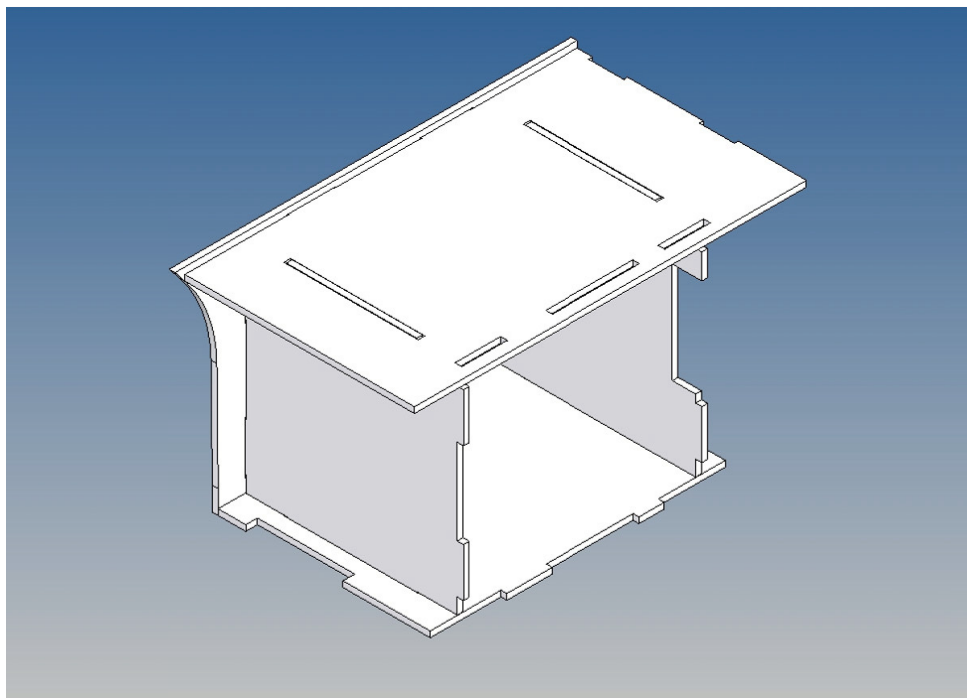


Ansicht der Staubox von
hinten (Innenseite) /
View of the storage box
from the back (inside)

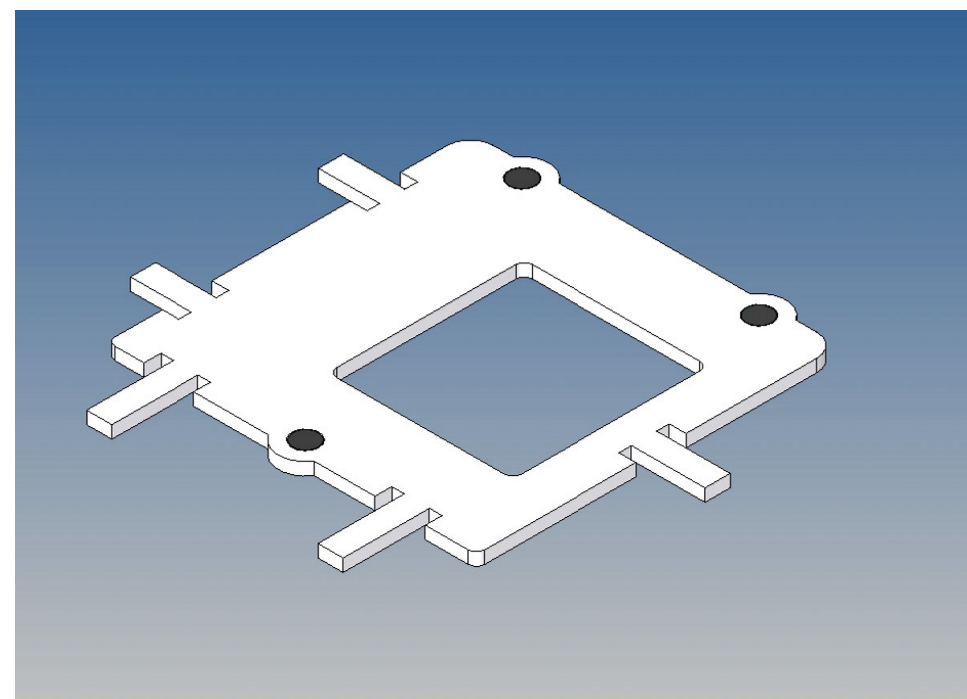
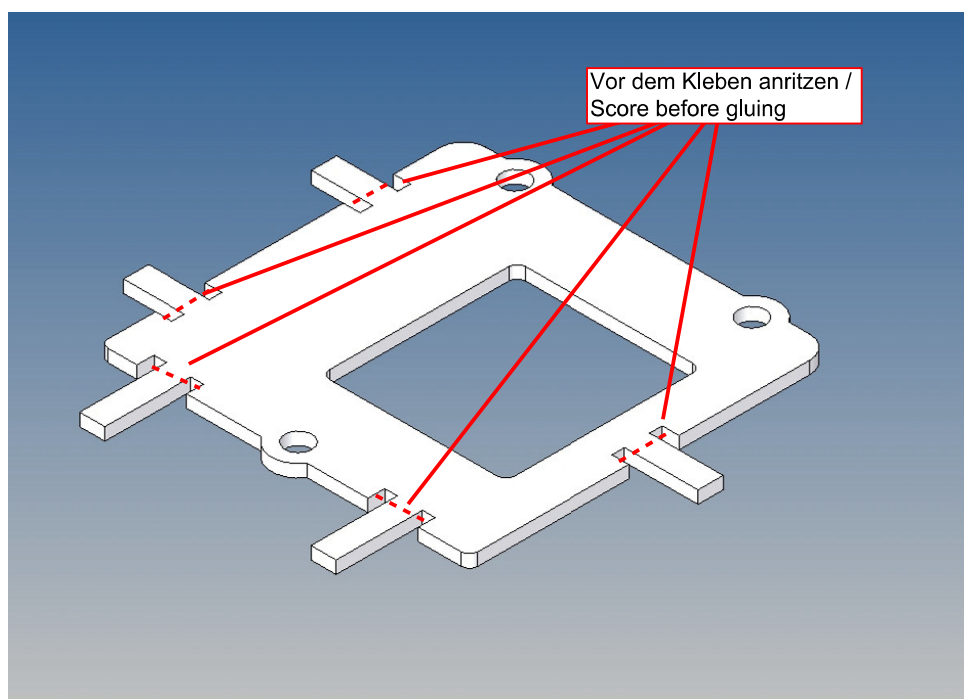
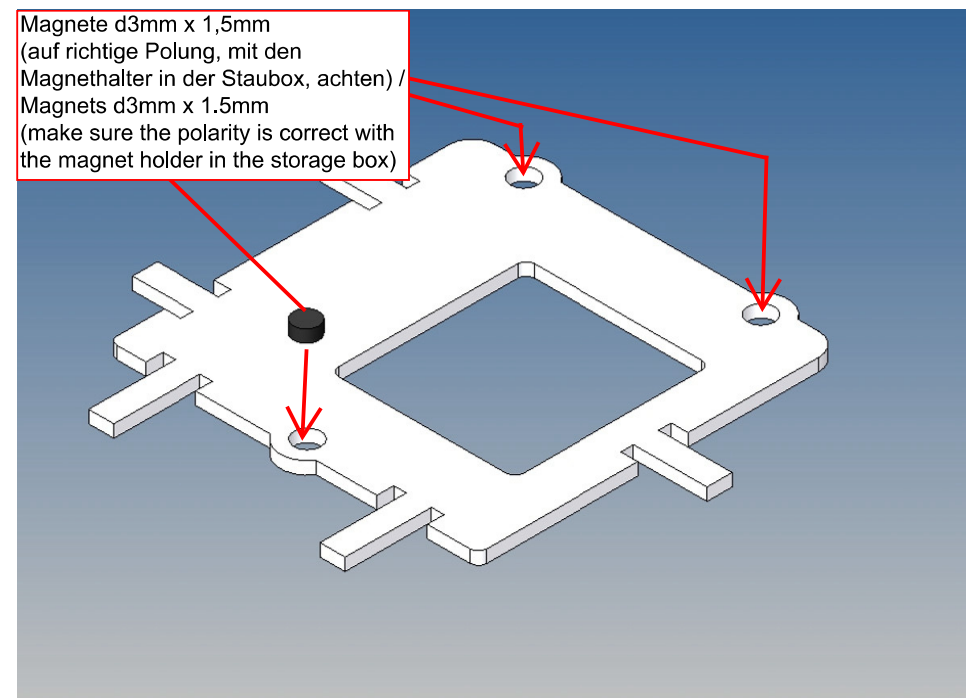
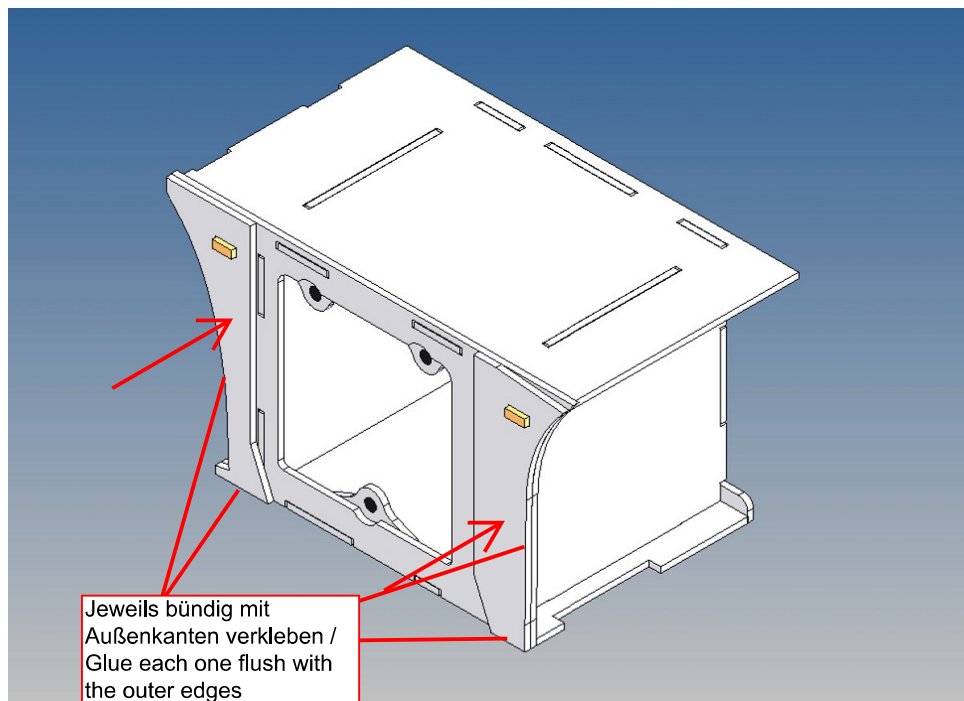


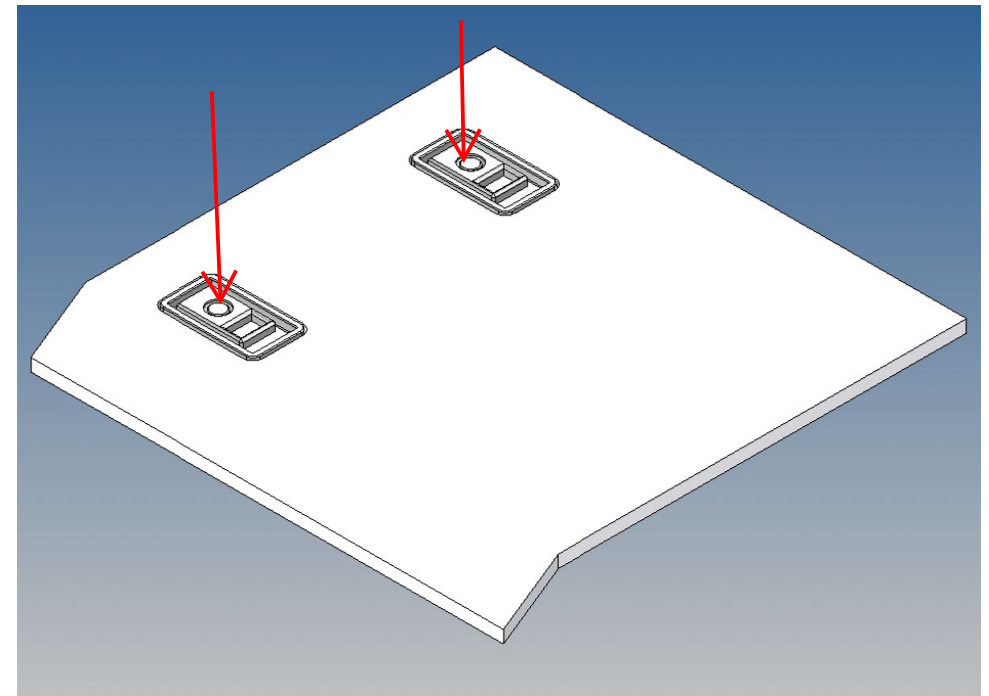
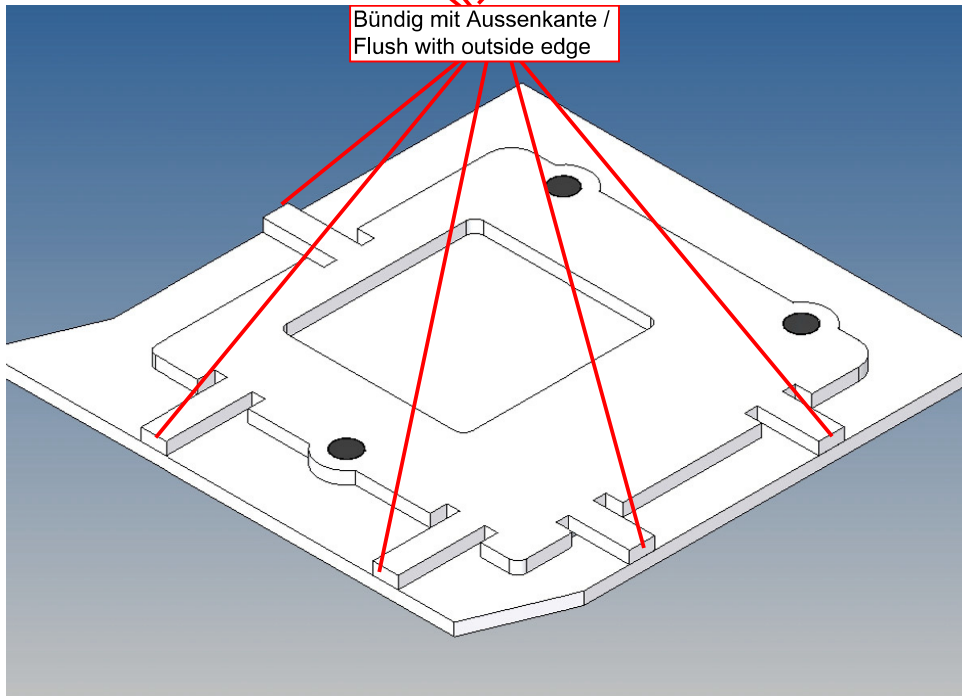
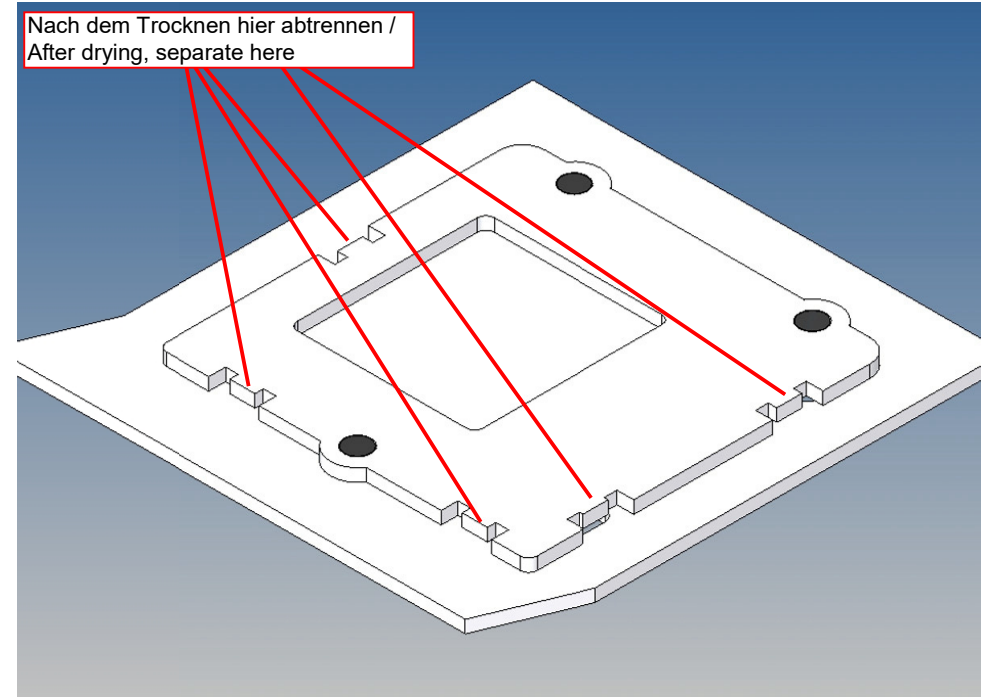
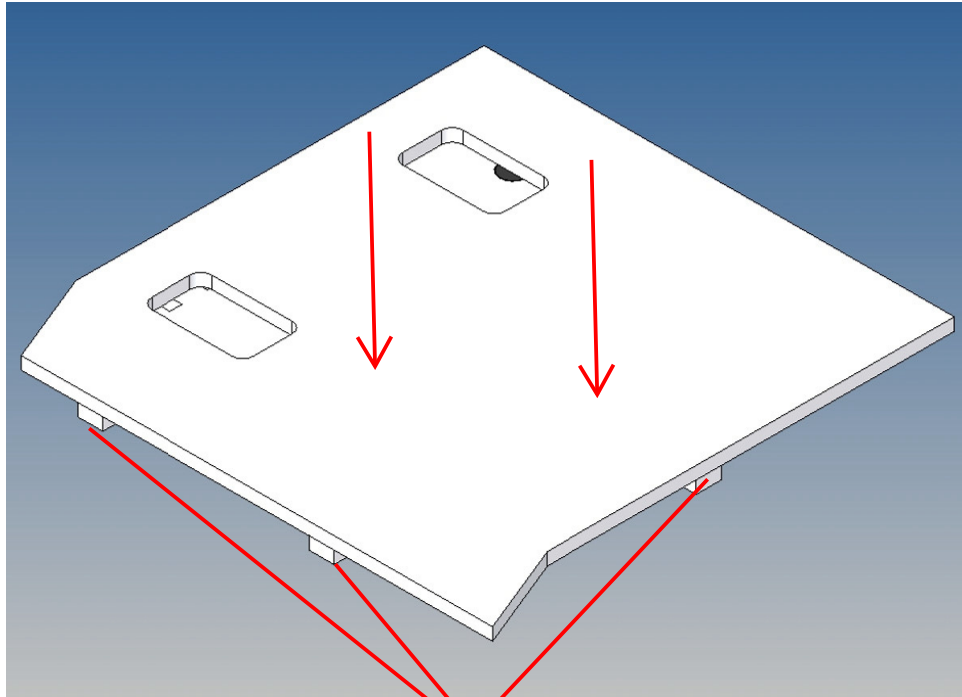
Ansicht der Staubox von außen /
View of the storage box
from the outside

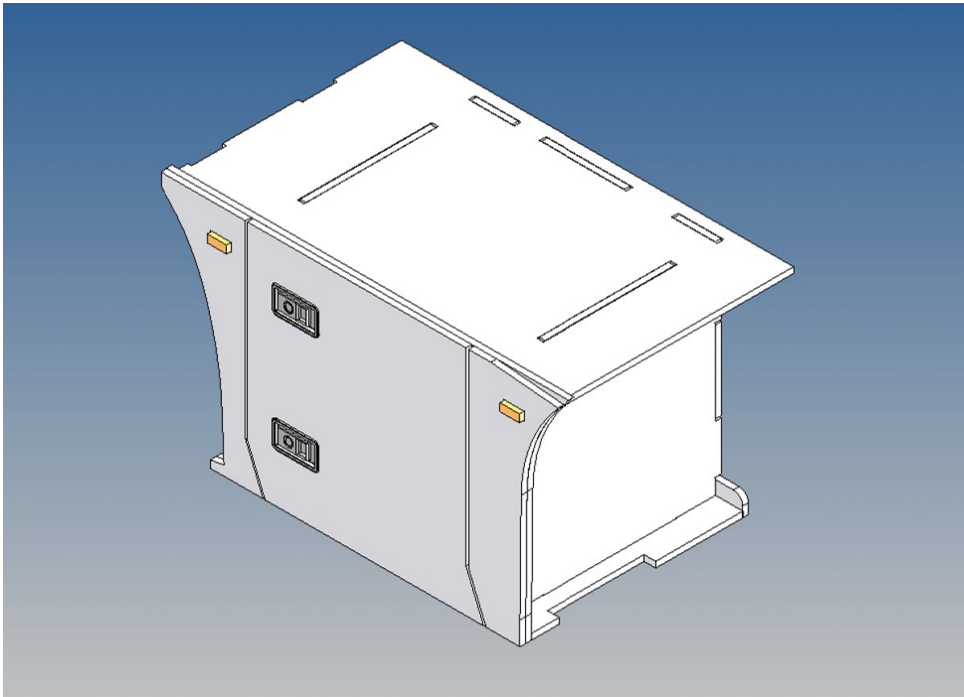
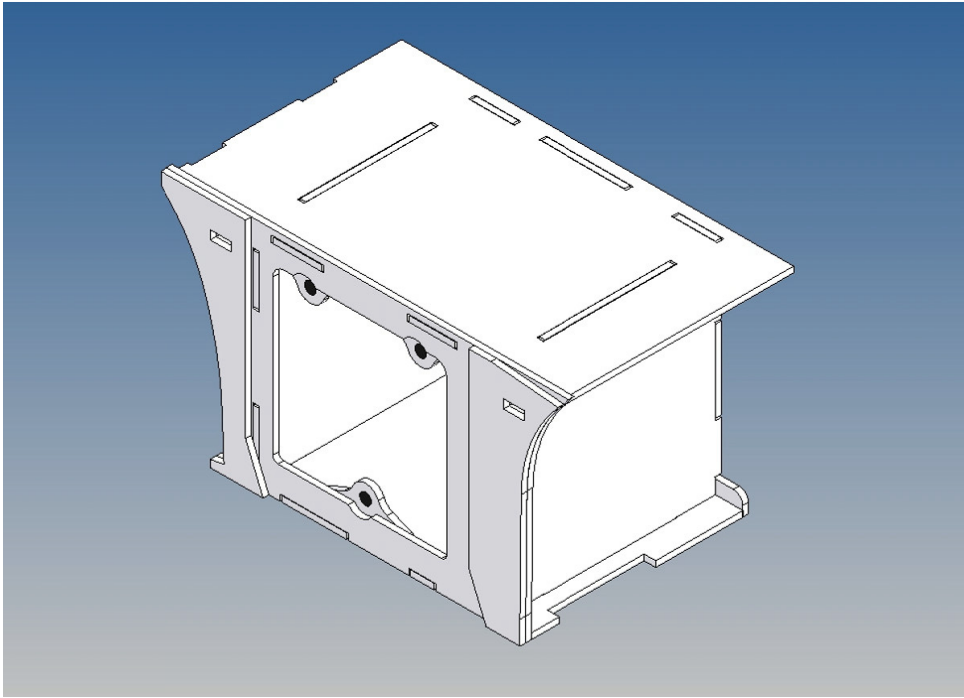




Zur besseren Platzierung, der
Frontblenden, LEDs von hinten einstecken /
For better placement of the front panels,
insert the LEDs from behind







Annotation:

For technical reasons delivery also magnets with different dimensions may be enclosed.

Good luck and have fun - your MDTechShop team

www.MDTechShop.de

For questions or replacement part requests please send a short e-mail.

Warning:

This is not a toy! It contains small parts! Keep it away from young children!