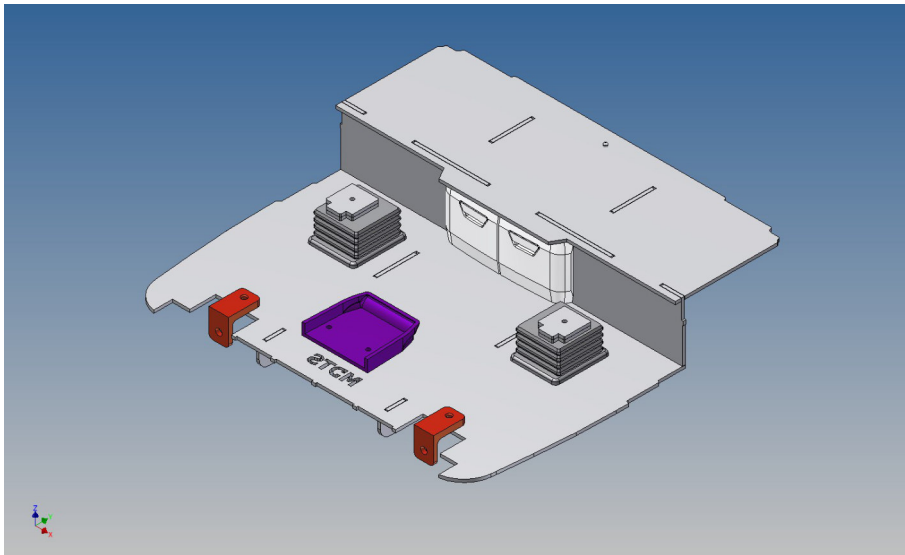


Assembly Instruction

**Driving cap floor assembly kit for
TAMIYA Scania 770S (1:14)
- cab bed + seat mounting brackets -**

Best.-Nr.: 2022-900B-02



Version 1.0 – 29.06.2022

Description

This kit includes parts for a driving cab floor for the TAMIYA Scania 770S (M 1:14).

On the one hand, the floor is screwed to the two PLA holders supplied, which are fixed to the screw connection of the dashboard holder, and on the other hand it is fastened to the driver's cab using a bed support supplied.

The view of the technology through the windscreen is thus obscured.

The technology platform provided in the Tamiya kit (Tamiya component G1) above the engine must be removed.

The seats get their own consoles for direct screwing with the floor. This ensures the use of the Tamiya driver figure.

The assembly

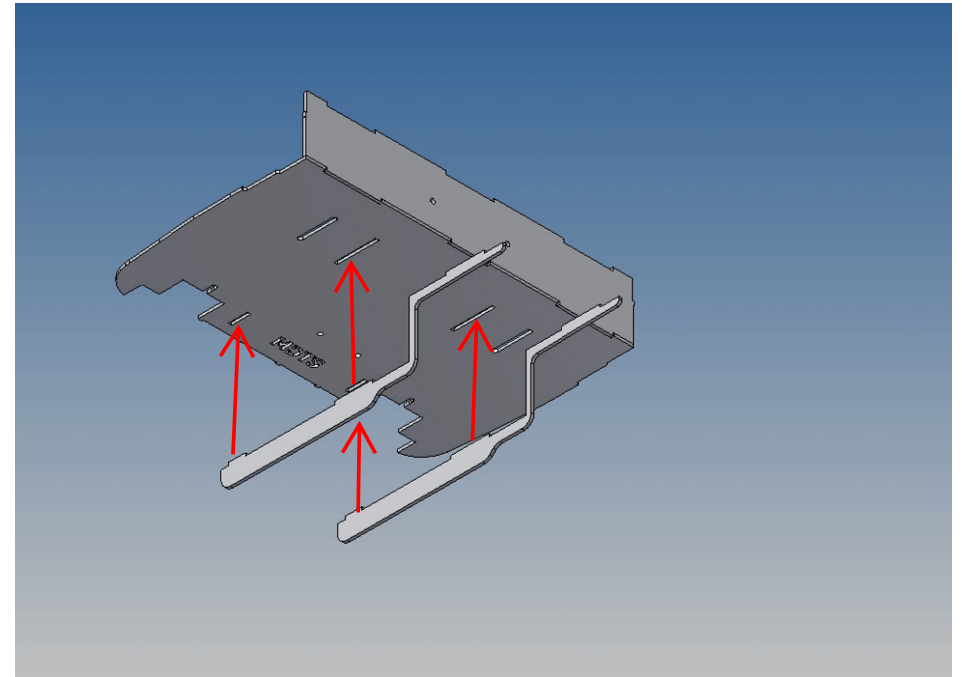
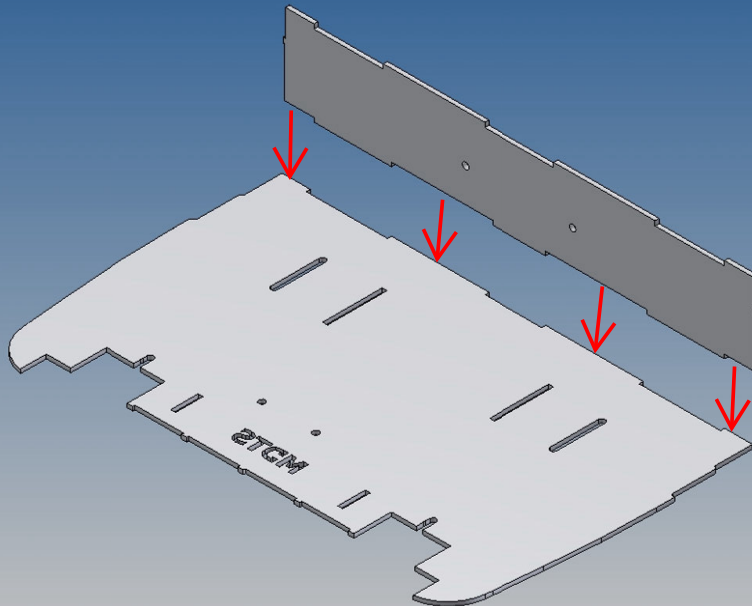
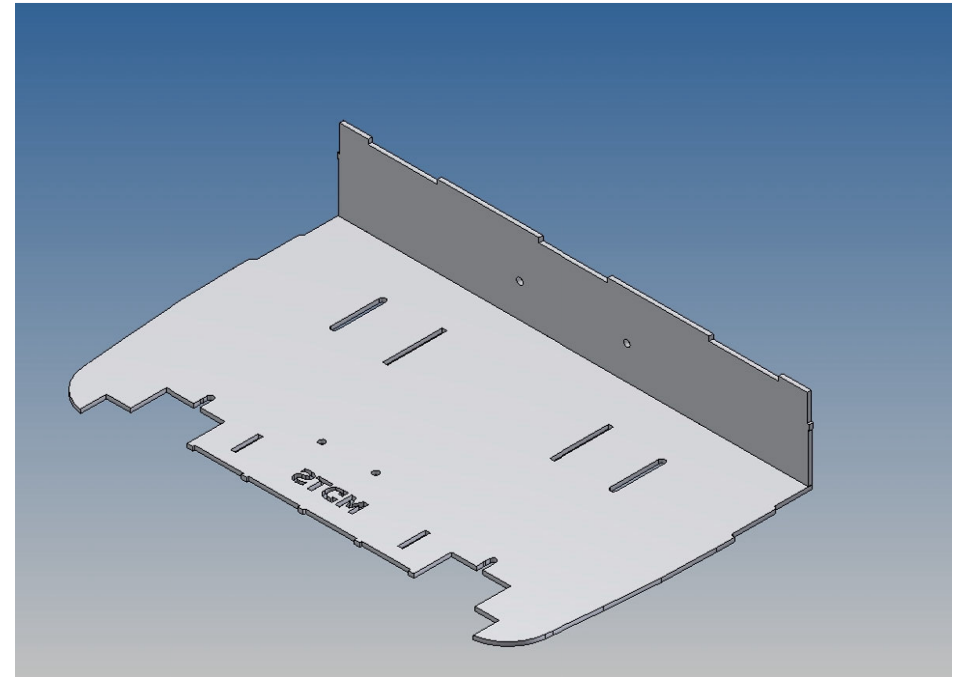
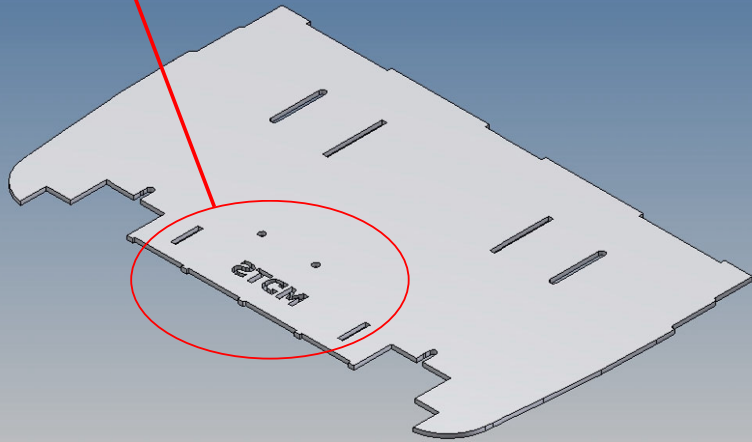
Before assembling, please familiarize yourself with the order of parts, location and fit of the individual parts.

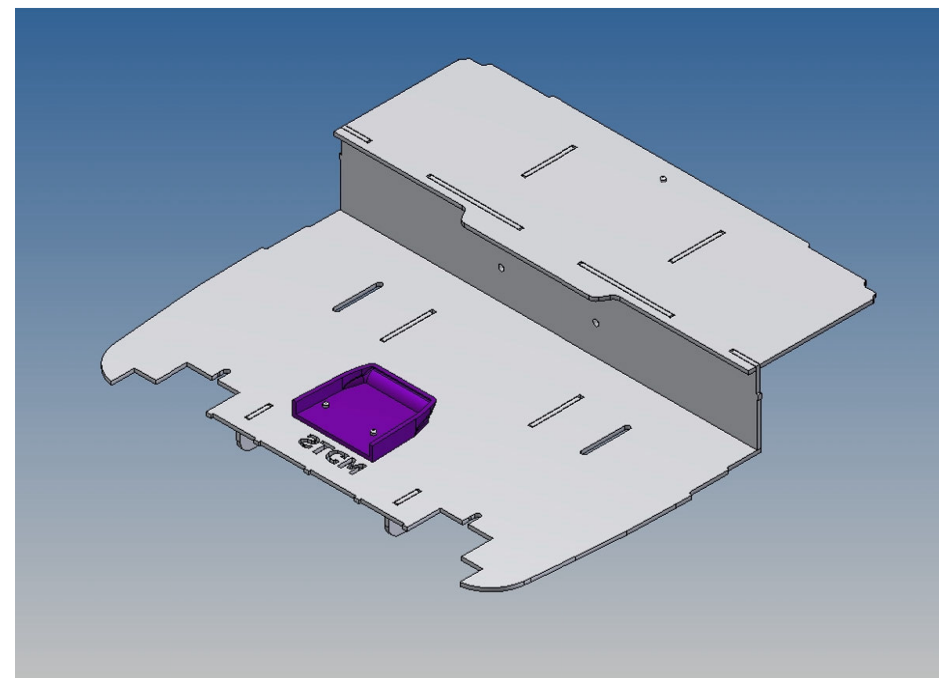
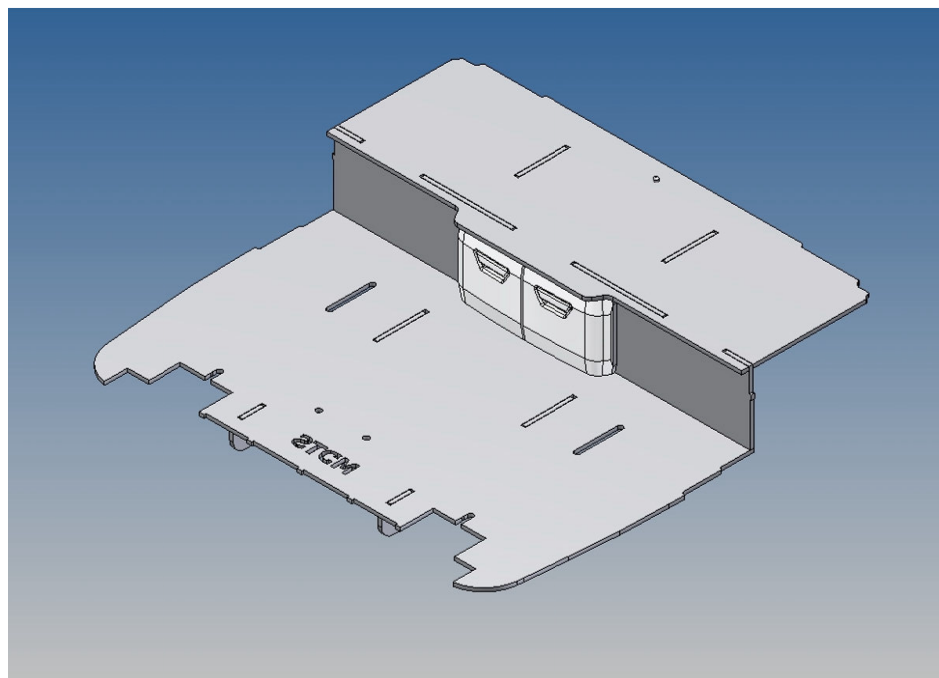
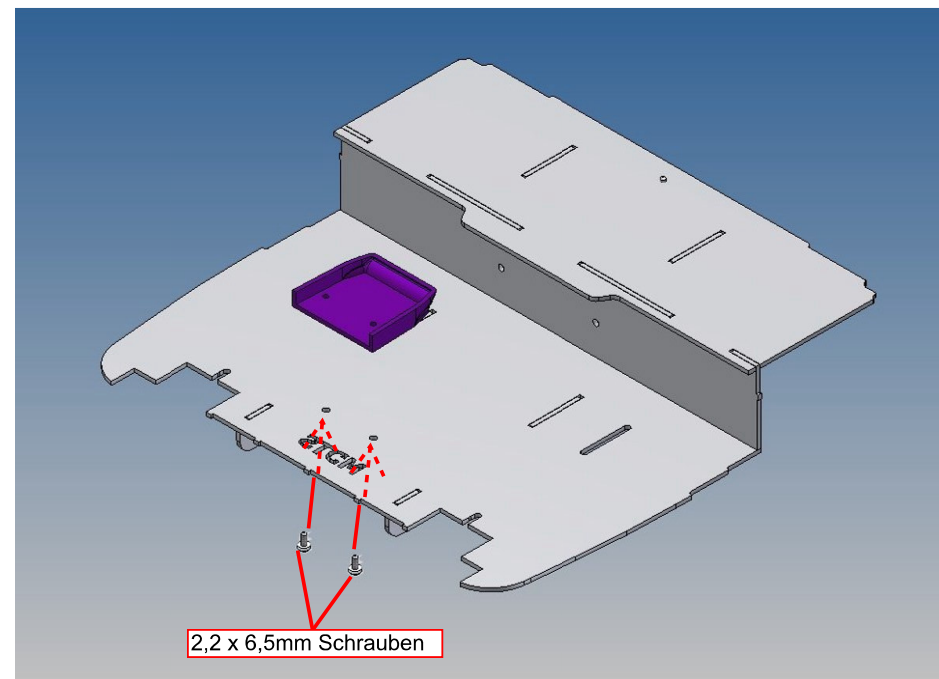
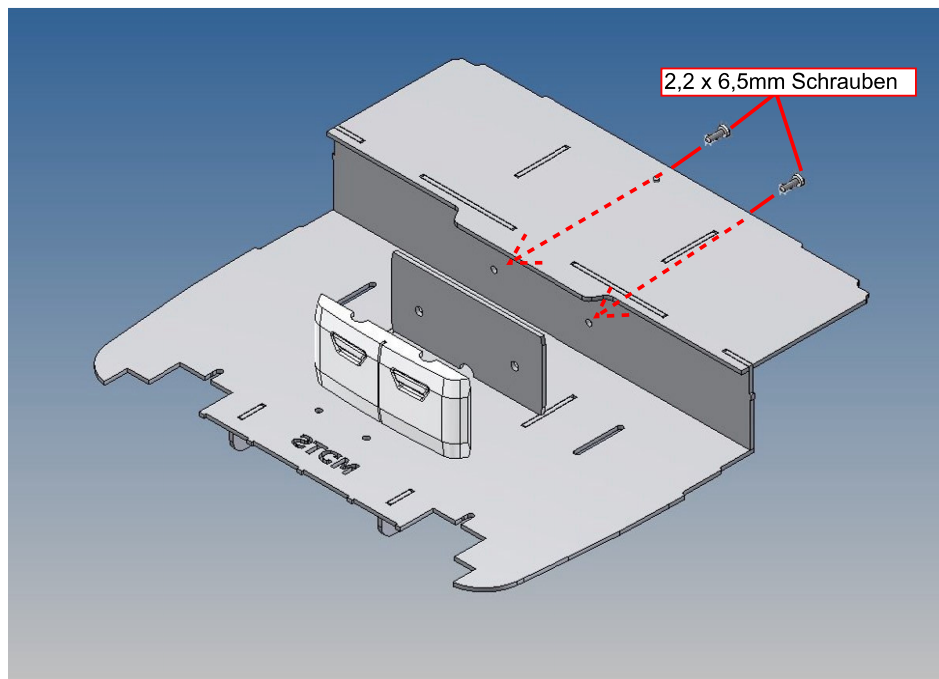
When assembling, it has proven itself to first fix the individual parts only at certain points with superglue and then to completely glue the finished overall structure along the joint edges with model building plastic glue.

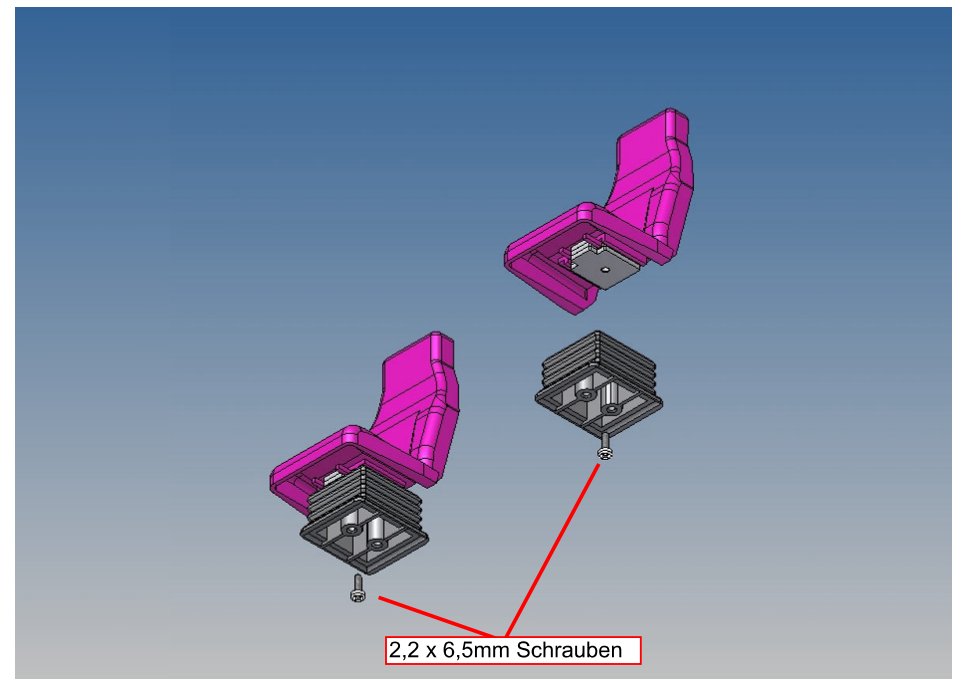
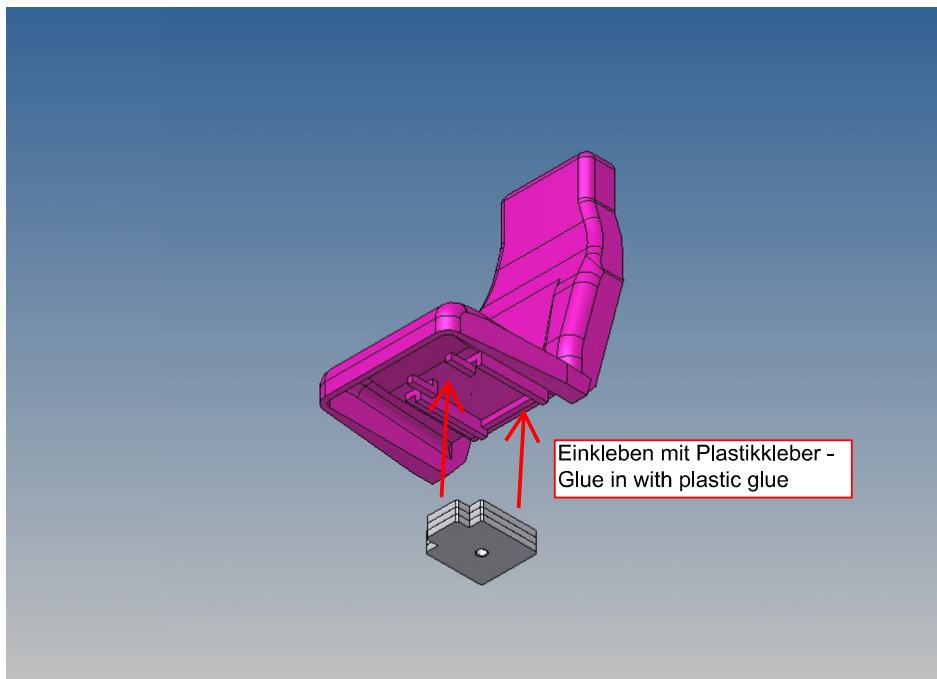
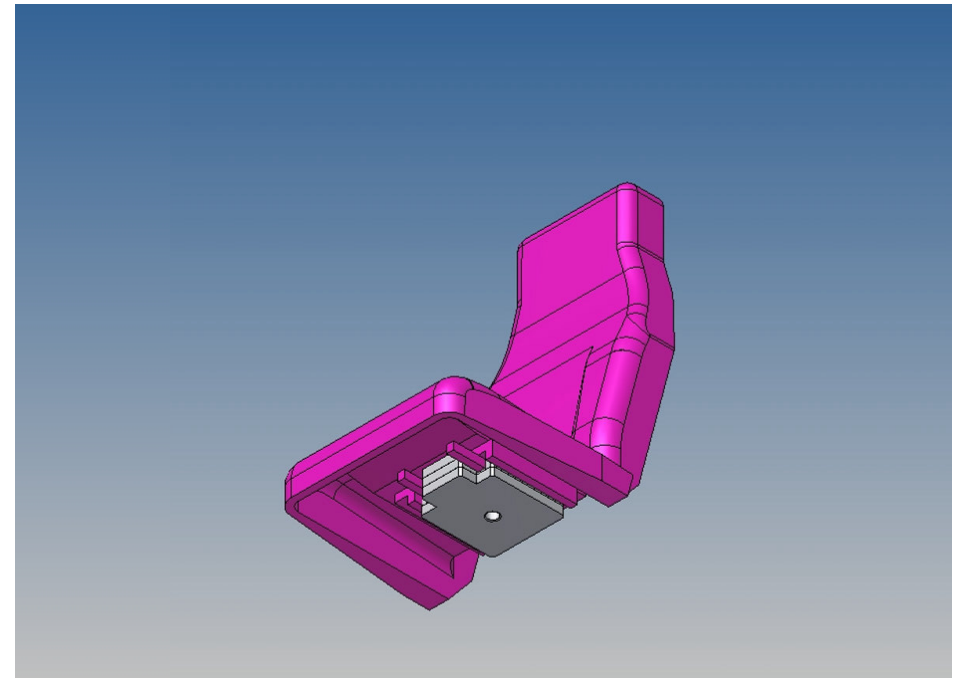
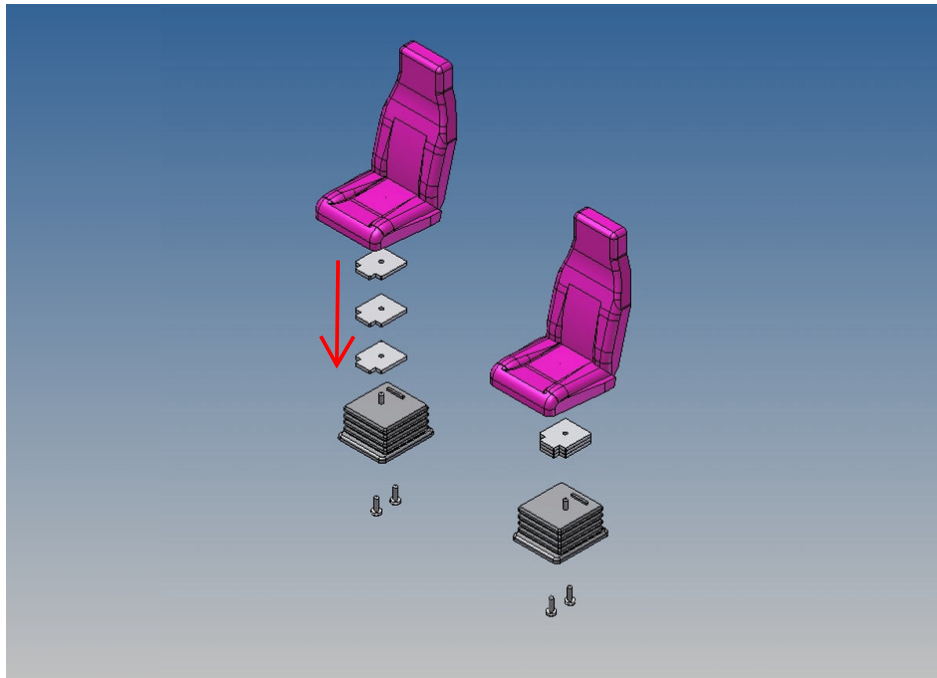
Since the components are made of polystyrene, use activator spray as sparingly as possible, or if in doubt, do not use it. Polystyrene briefly becomes soft and brittle when exposed to activator sprays.

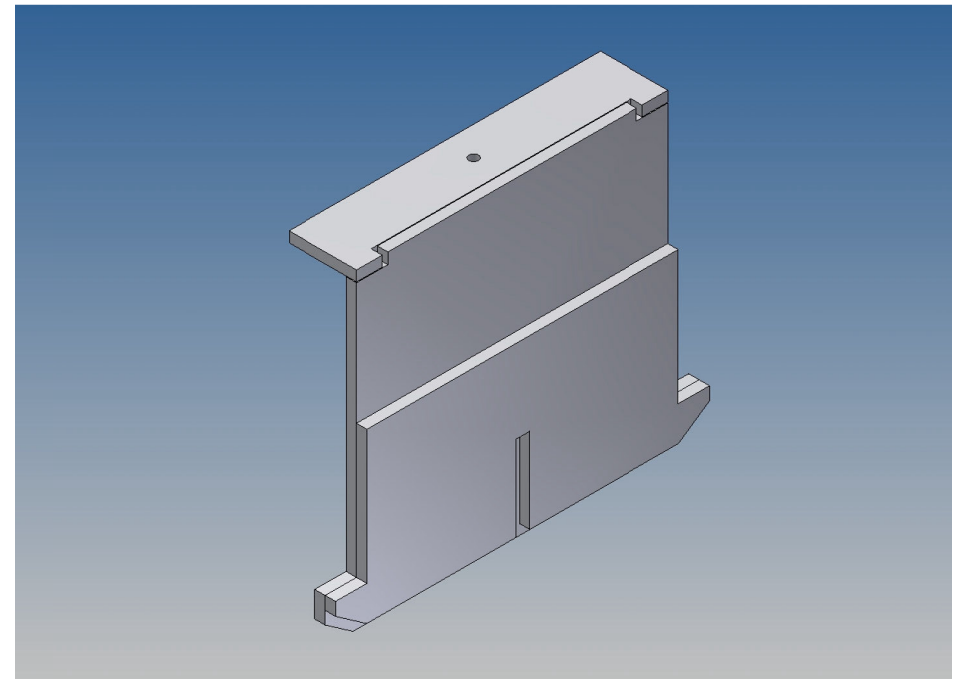
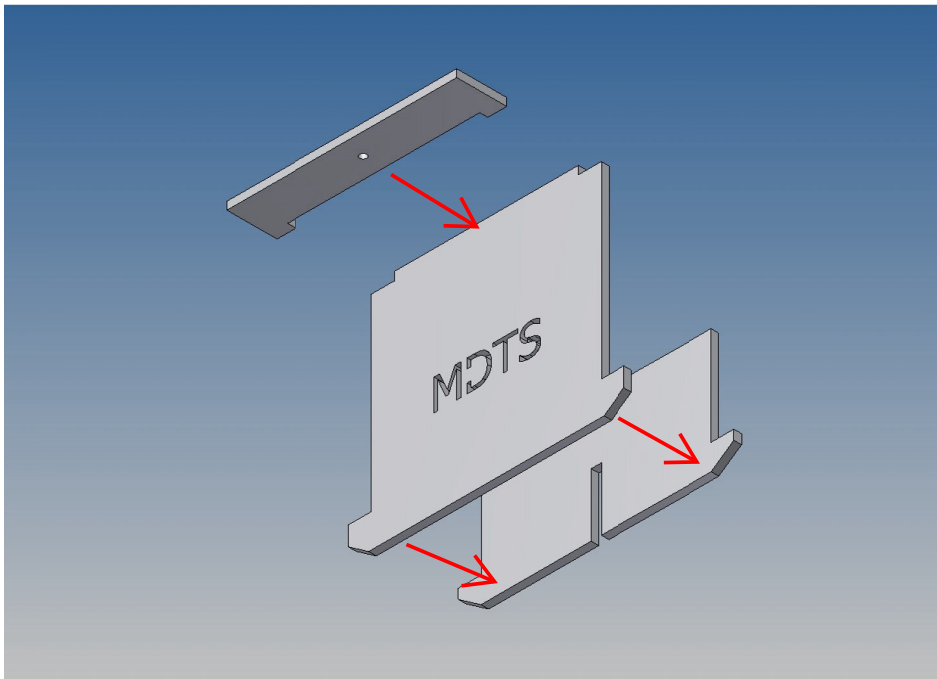
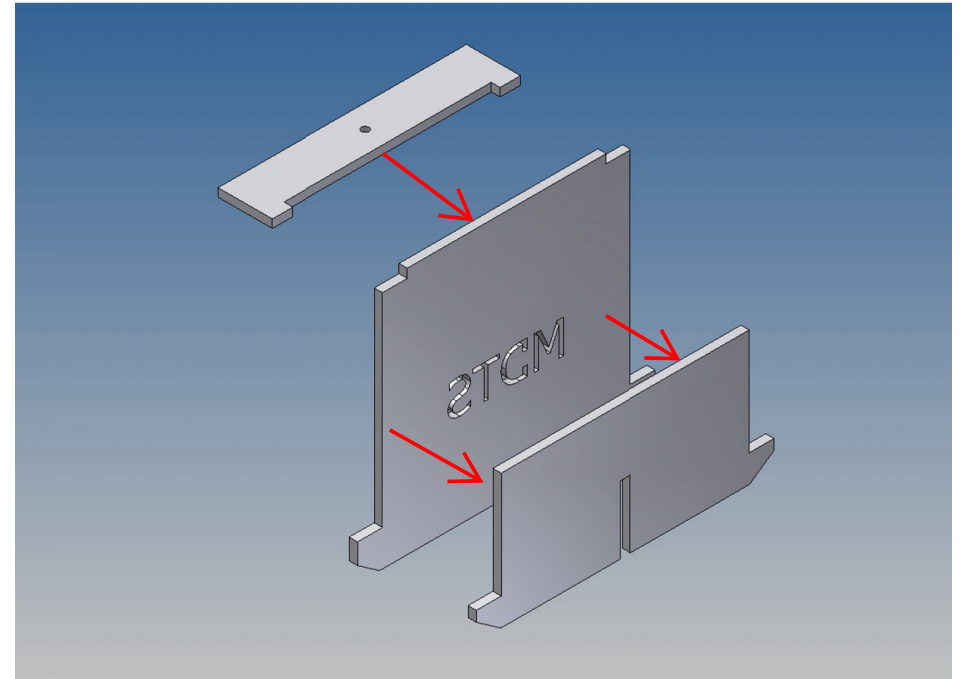
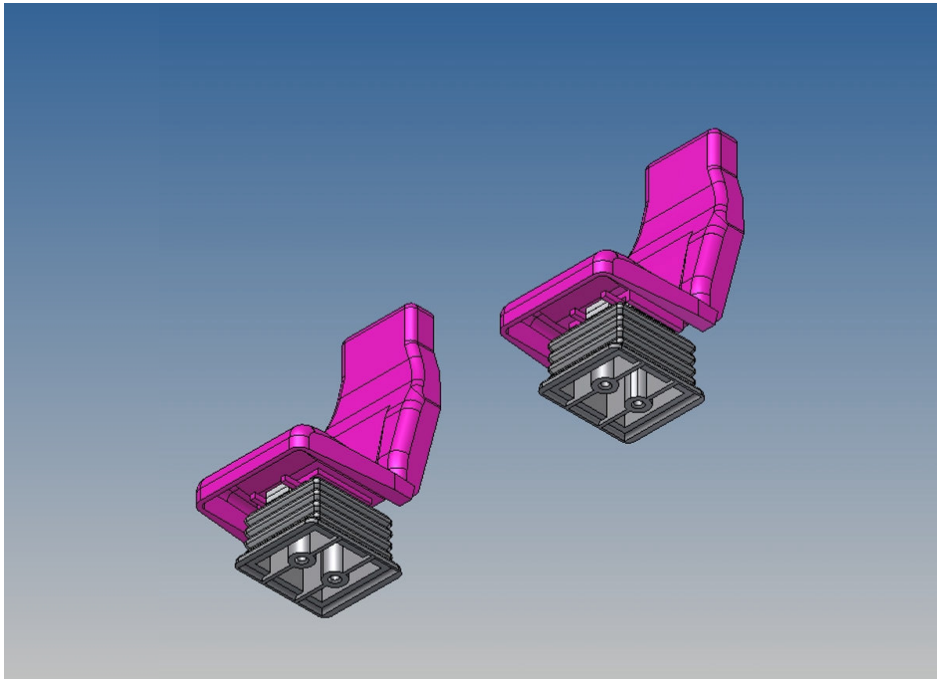
We recommend the use of model-making plastic glue for complete bonding.

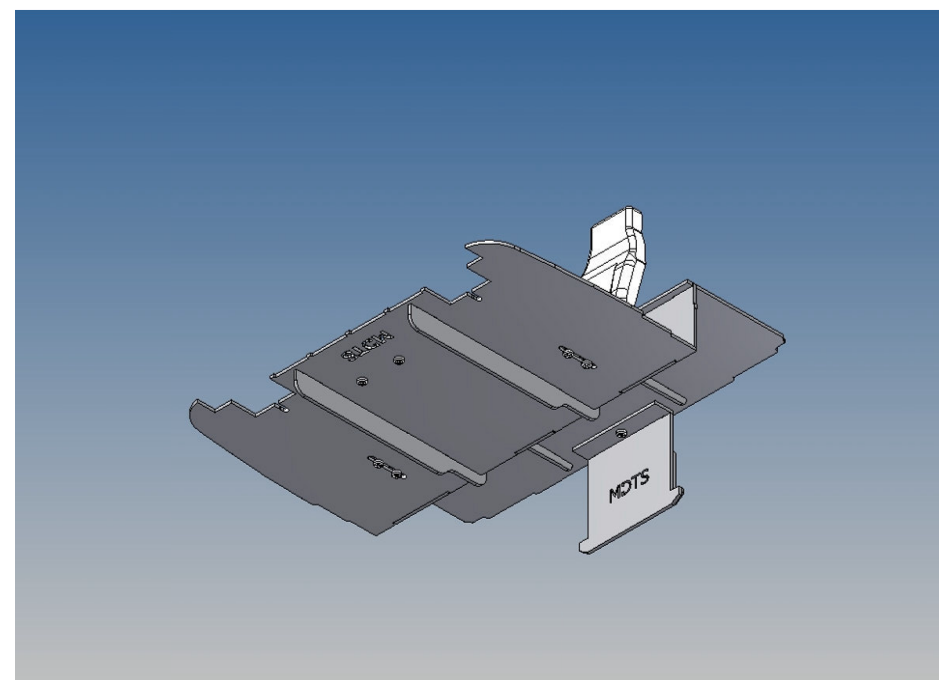
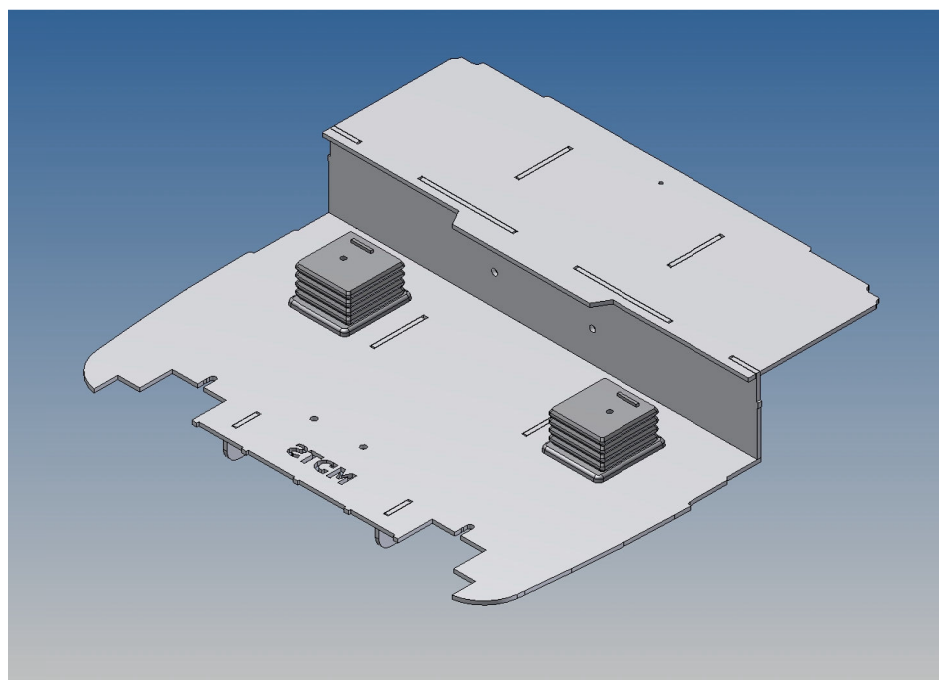
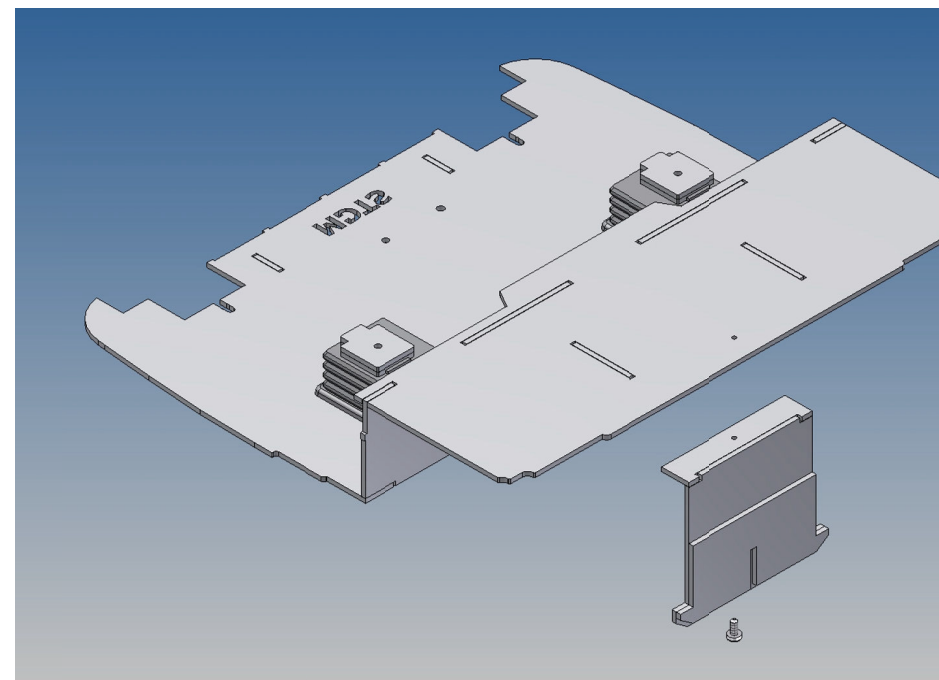
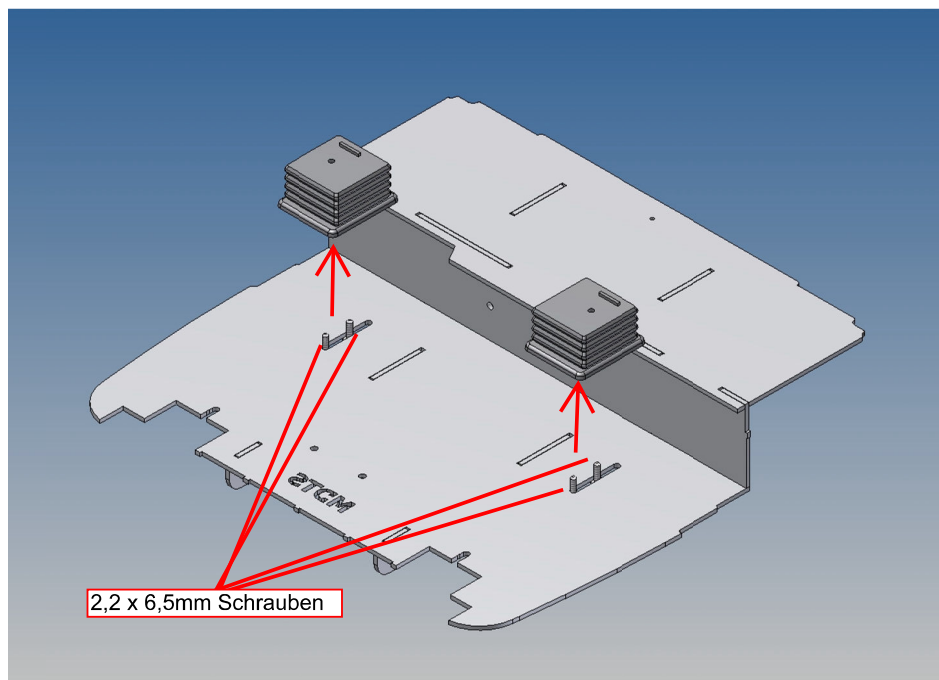
Auf richtige Platzierung achten -
Pay attention to correct placement

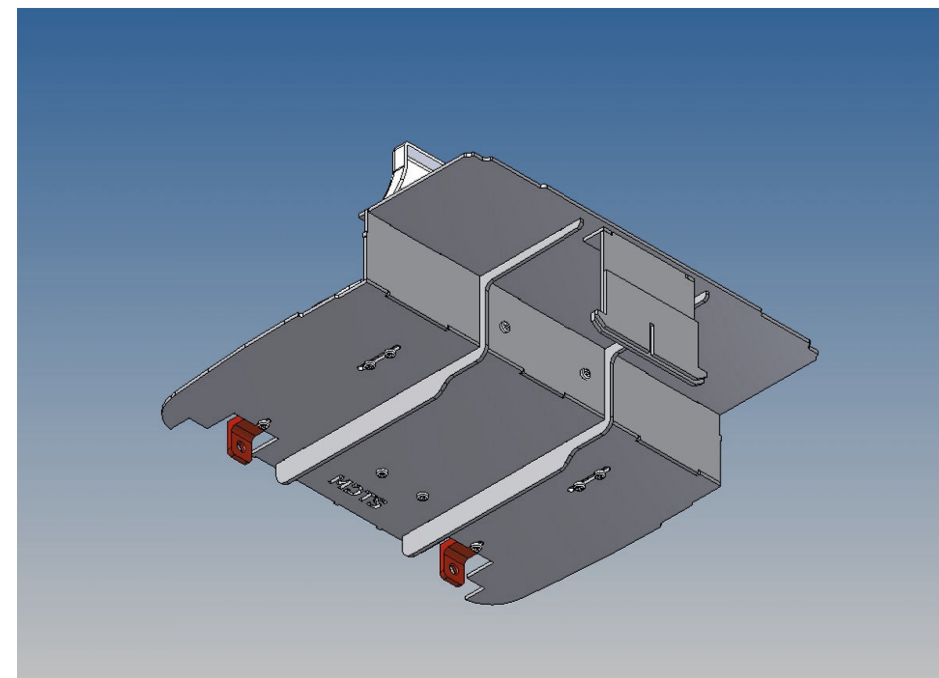
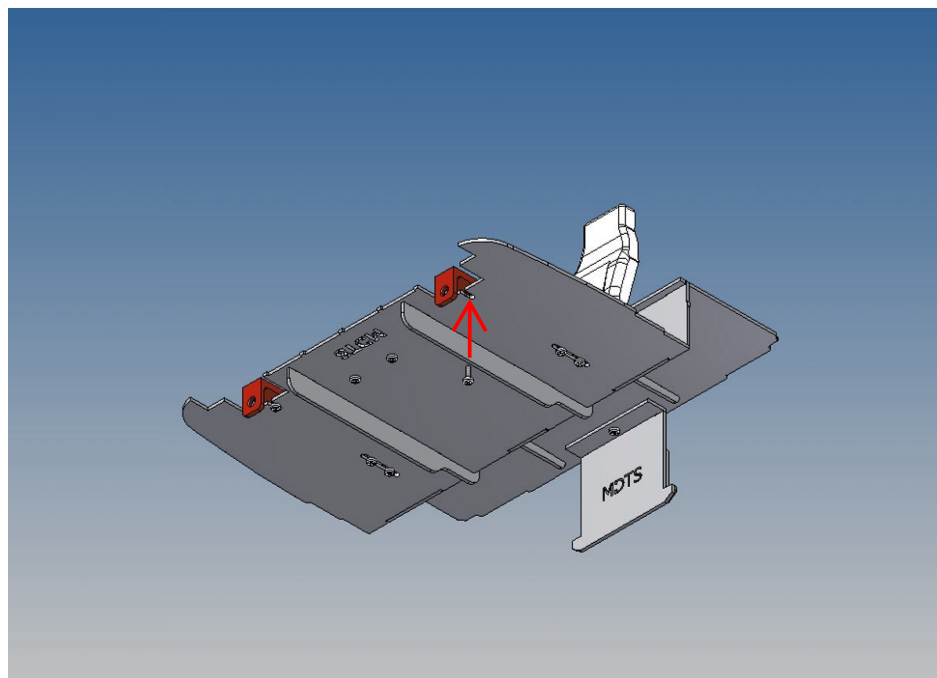
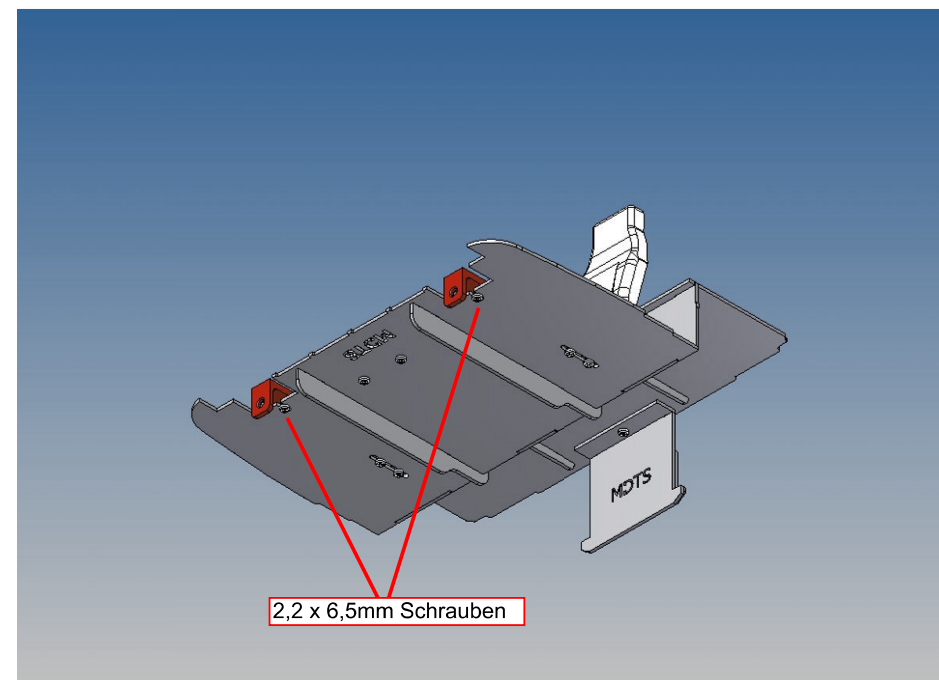
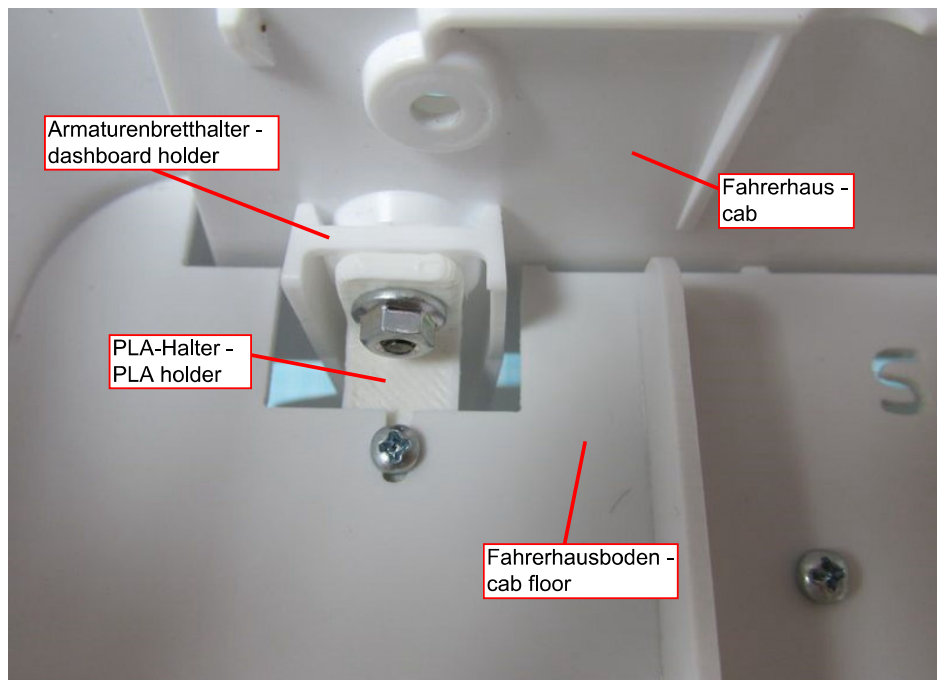


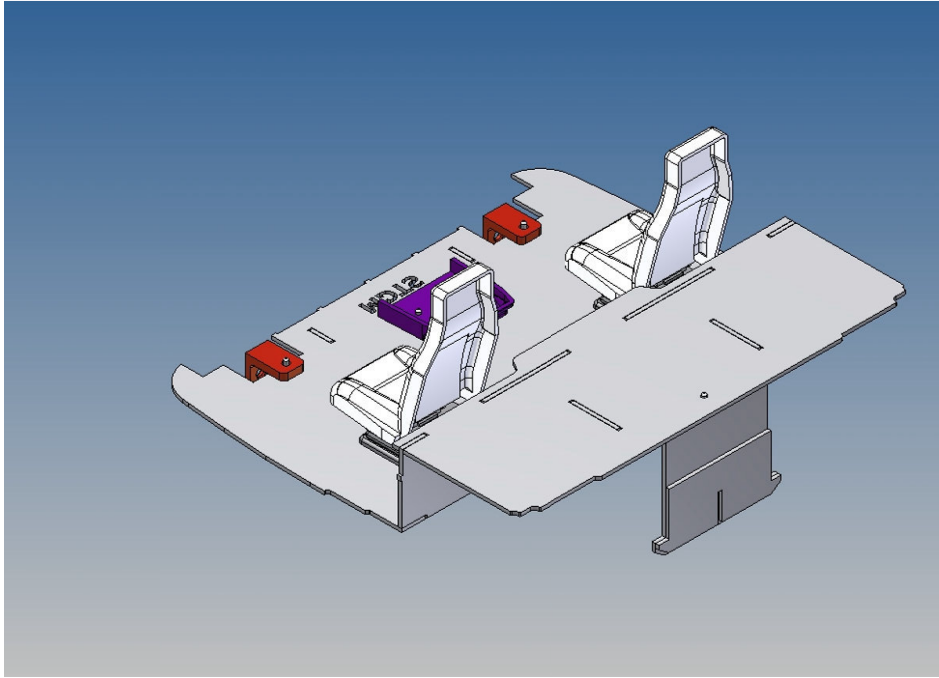












Annotation:

Good luck and have fun - your MDTechShop team

www.MDTechShop.de

For questions or replacement part requests please send a short e-mail.

Warning:

This is not a toy! It contains small parts! Keep it away from young children!