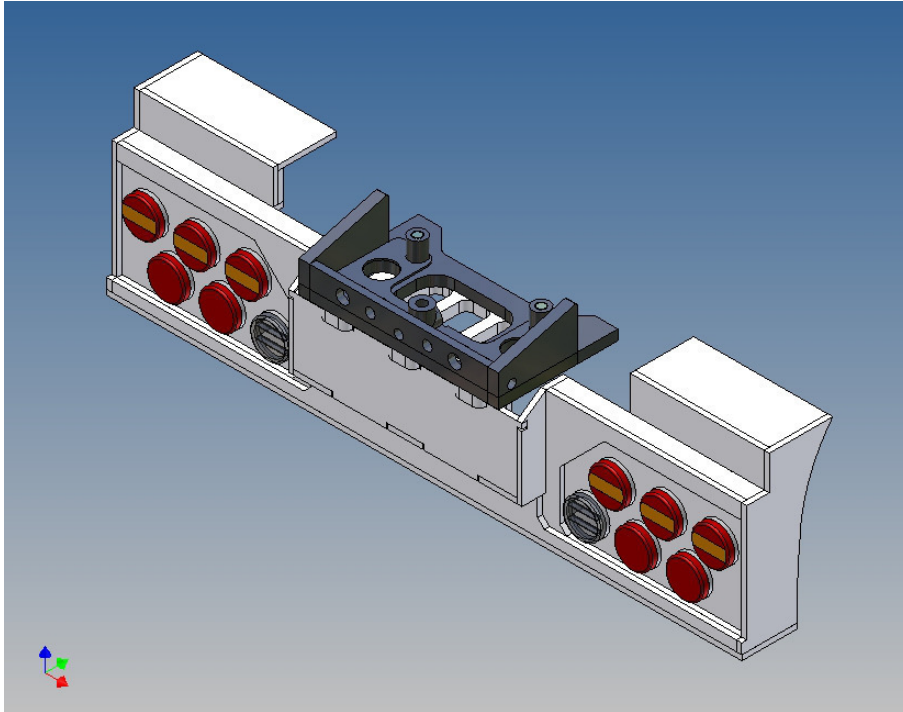


Assembly Instruction

**Bumper for Carson 3-cell lights 6x3
for TAMIYA 2-axle trucks (1: 14)**

Best.-Nr.: 2016-9501-C6



Version 2.0 – 20.05.2017

General Description

This polystyrene-milled parts set for a bumper as an accessory was designed for the TAMIYA trucks (1:14).

The bumper can be mounted on the vehicle frame. As mounting serving two specially developed retaining plates, which is positioned flush right behind the original Tamiya Traverse.

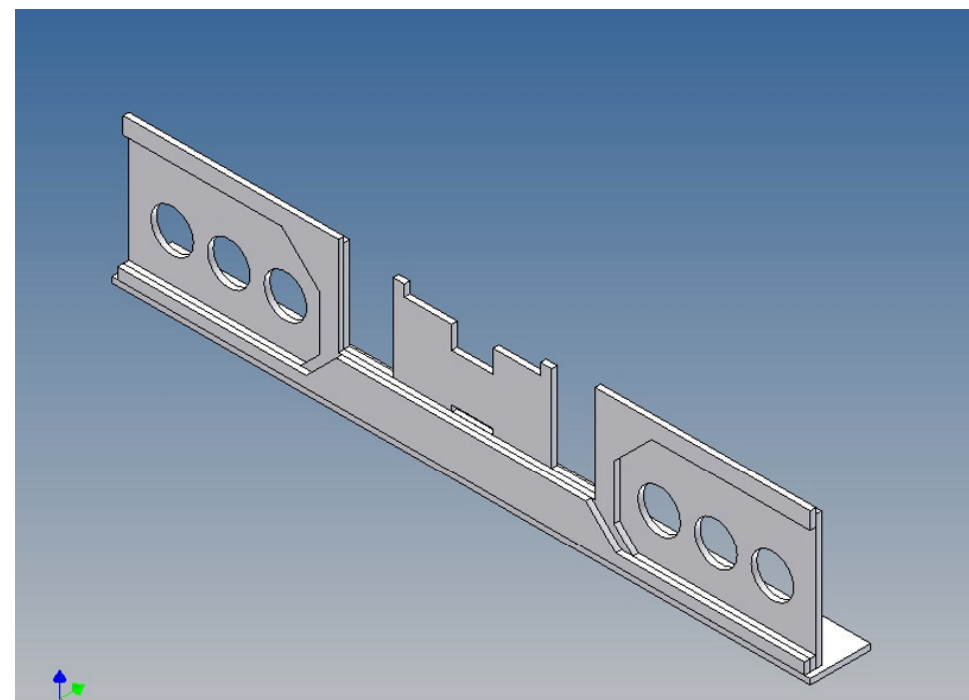
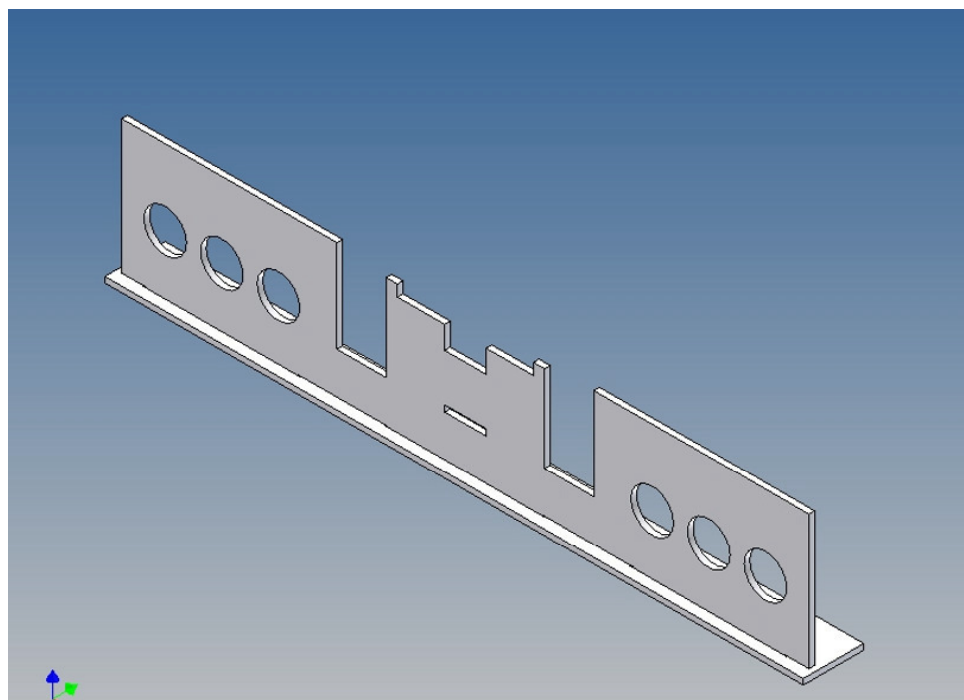
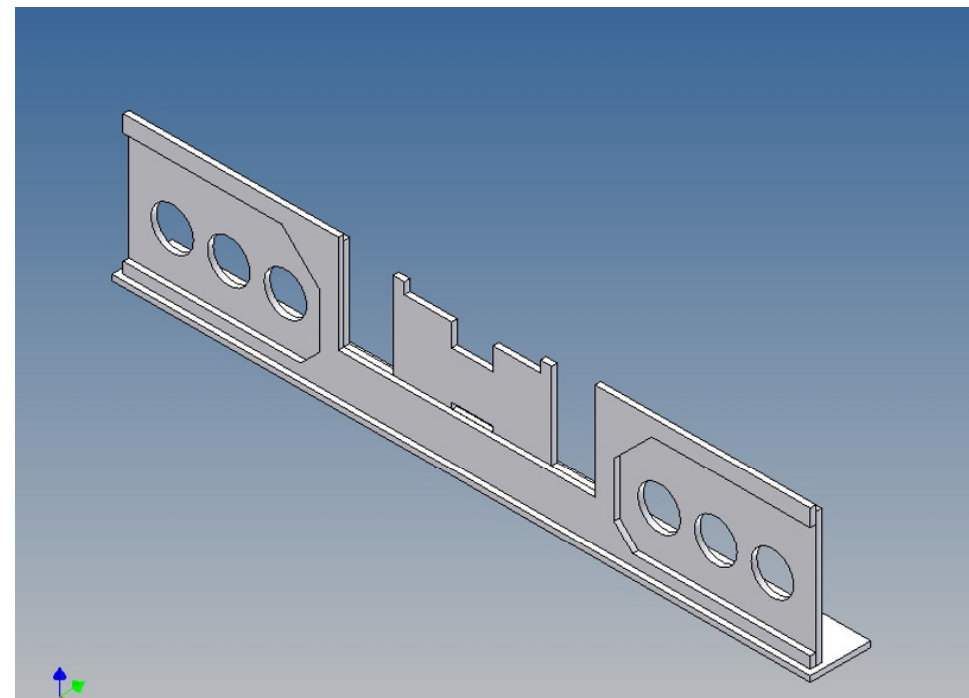
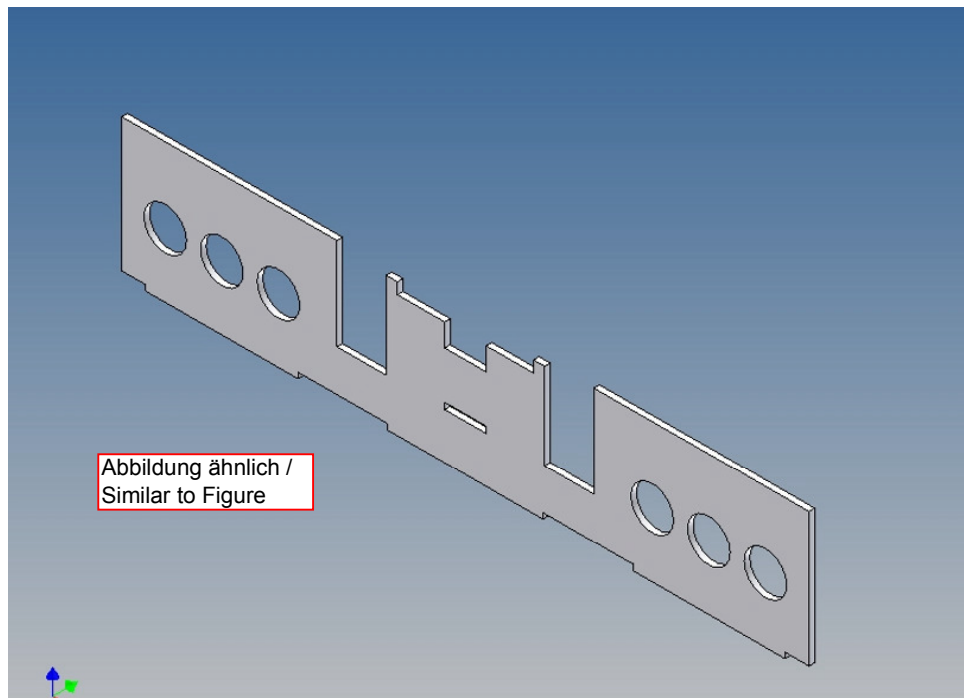
There are recesses for six *Carson 3-cell lights*
(Carson lights are not included).

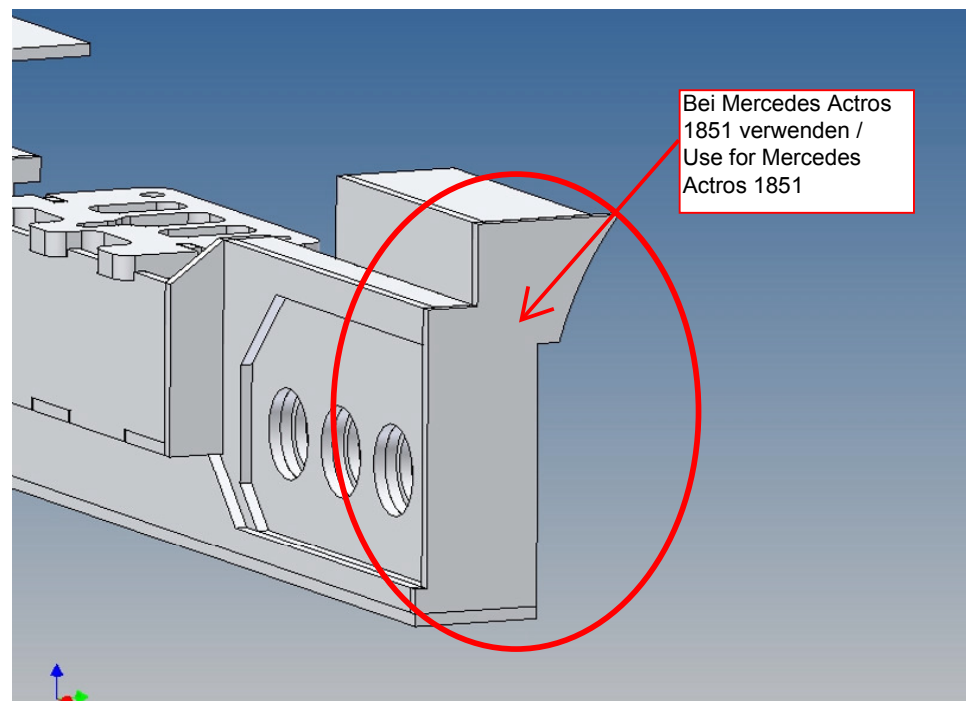
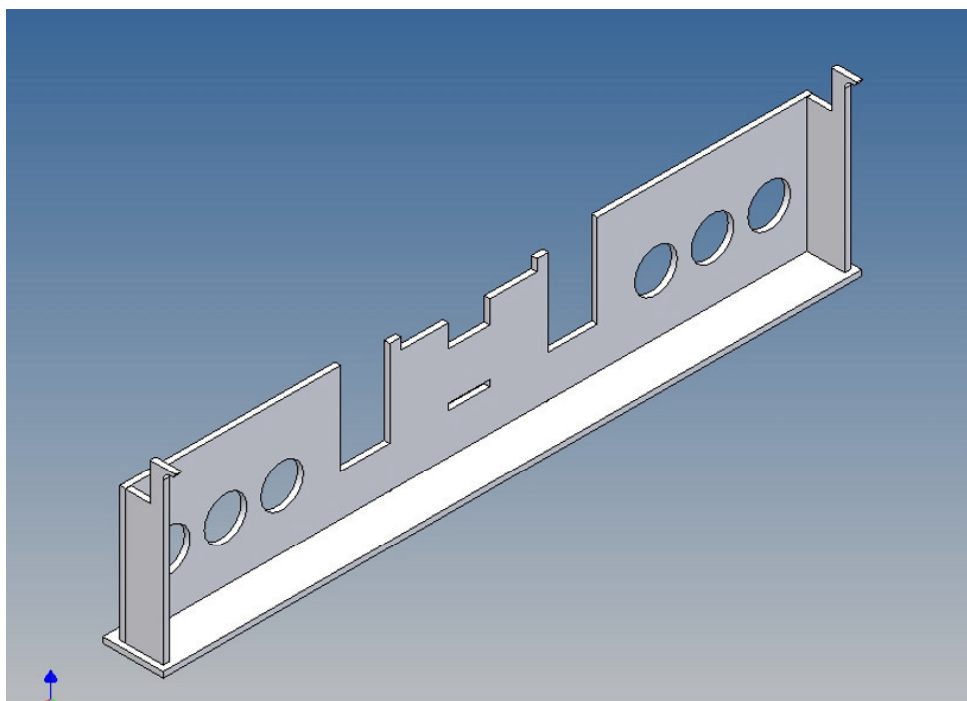
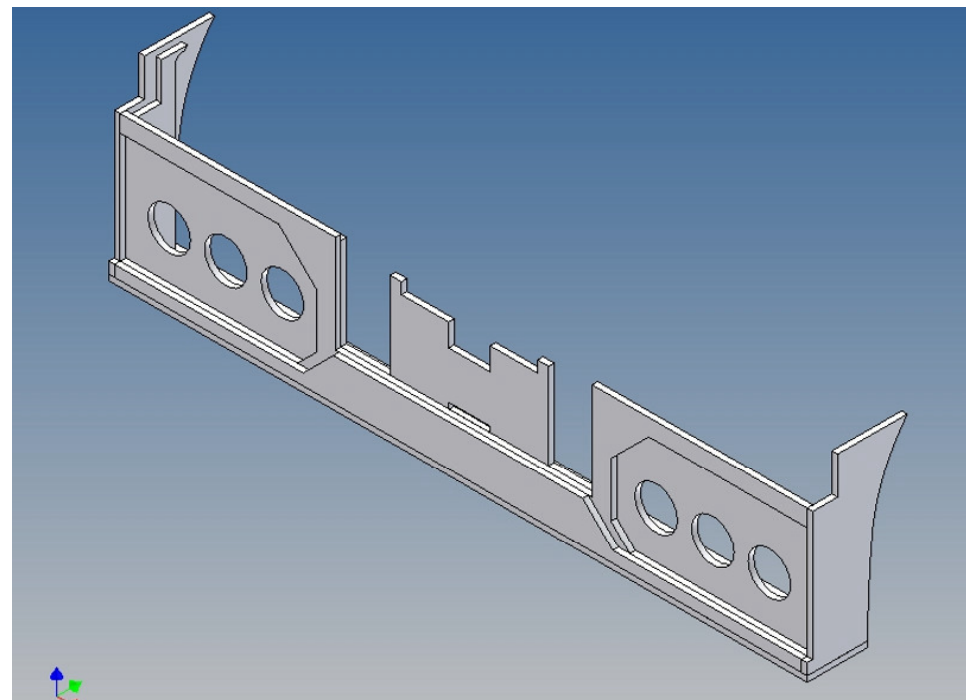
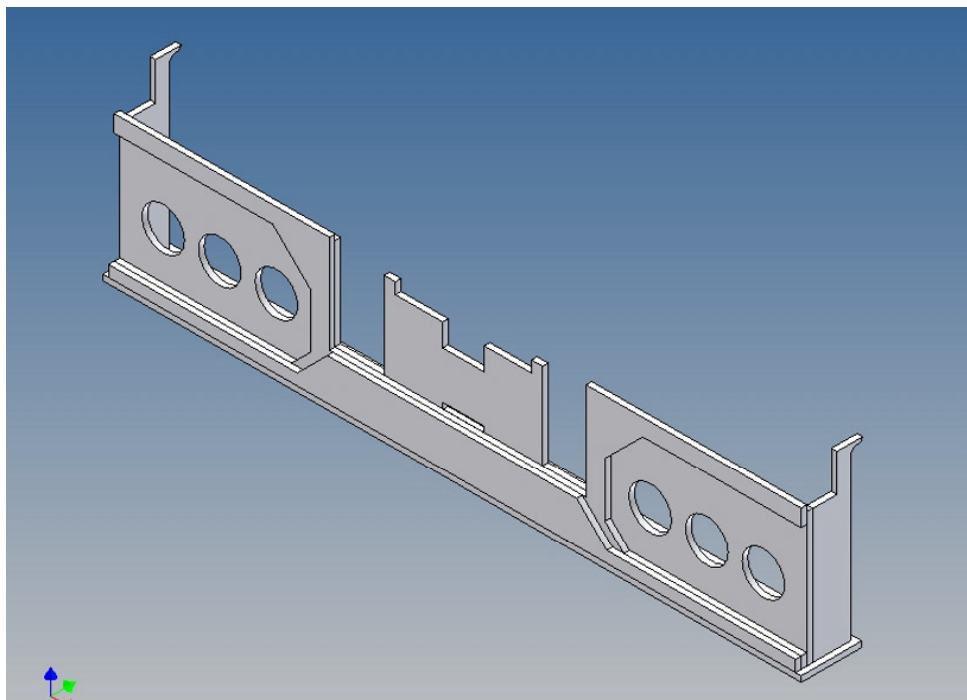
Assembly Procedure

Before you put the parts together please read the assembly instructions carefully and pay attention to the assembly sequence and test the fitting accuracy of the parts before gluing them together.

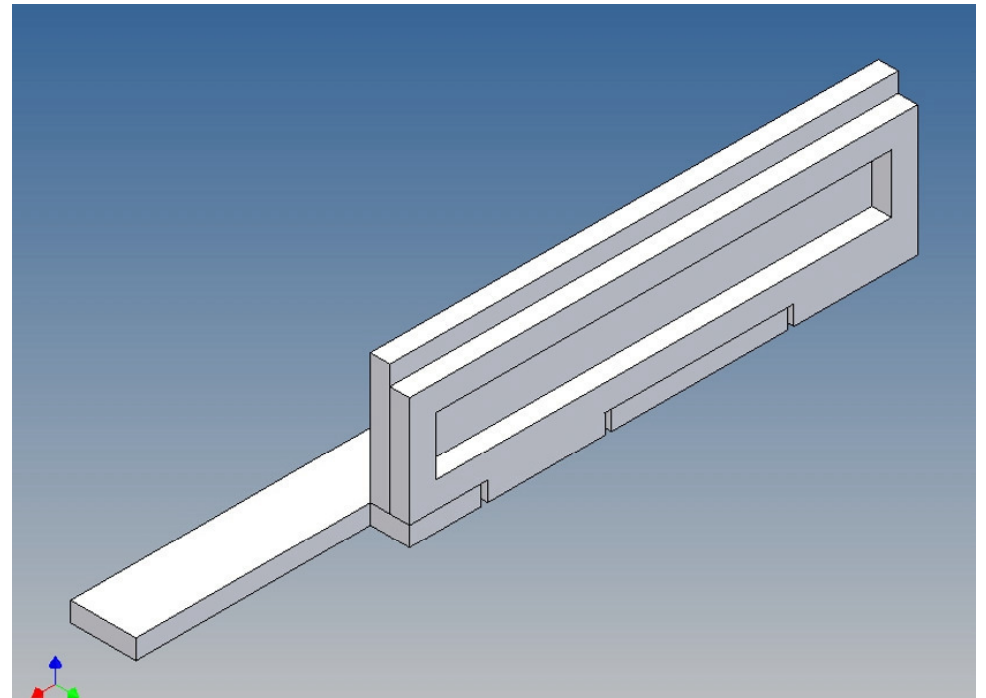
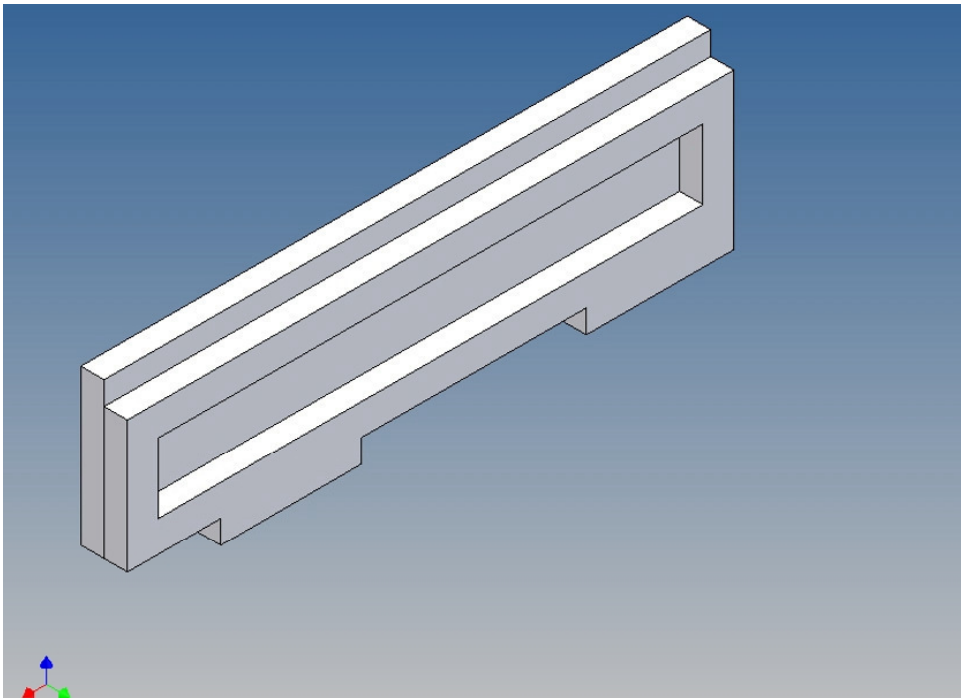
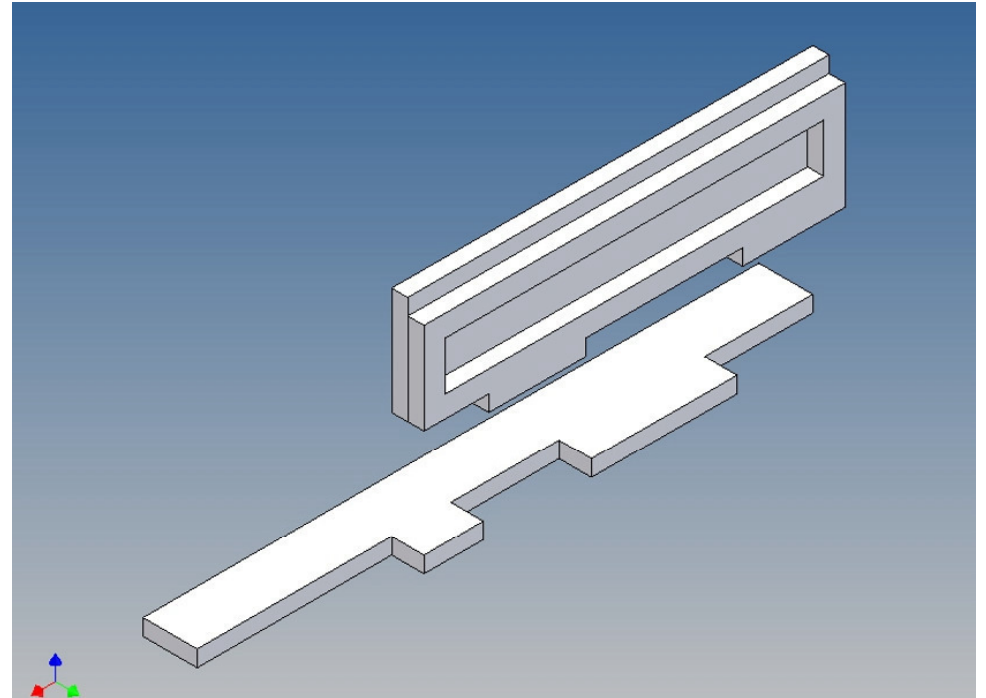
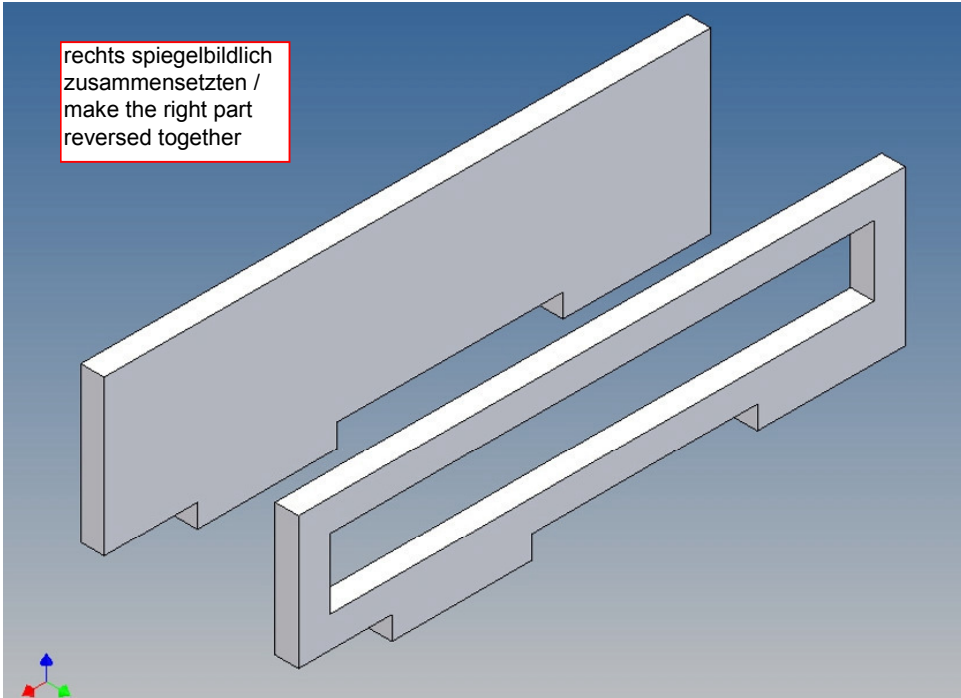
It is helpful to fix the parts at first only on a few points with super-glue and after a check along the edges fully with super-glue or a polystyrene-glue.

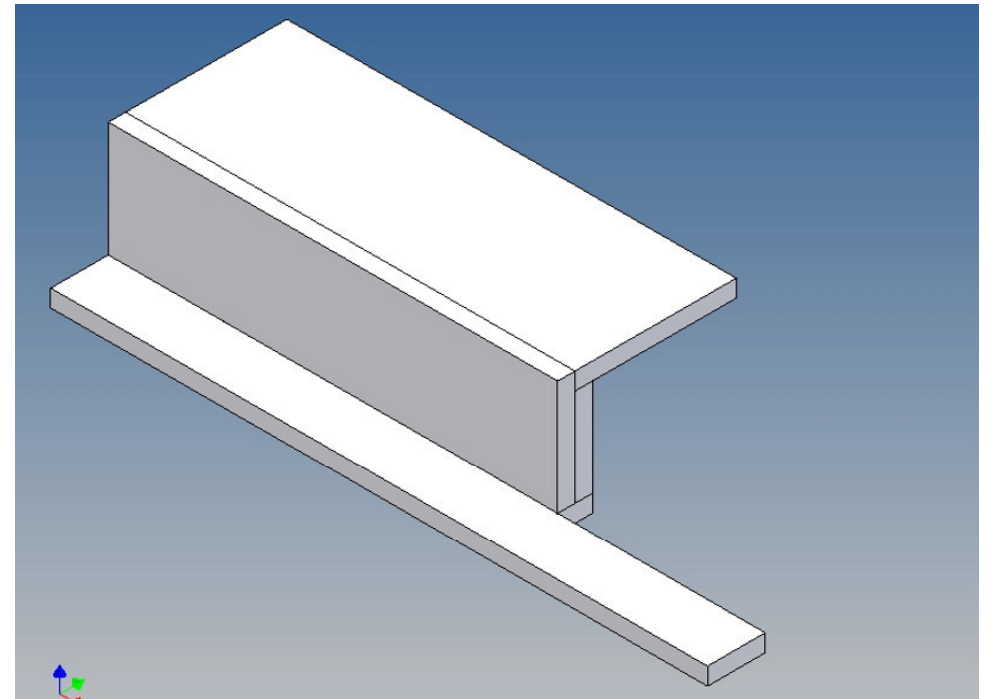
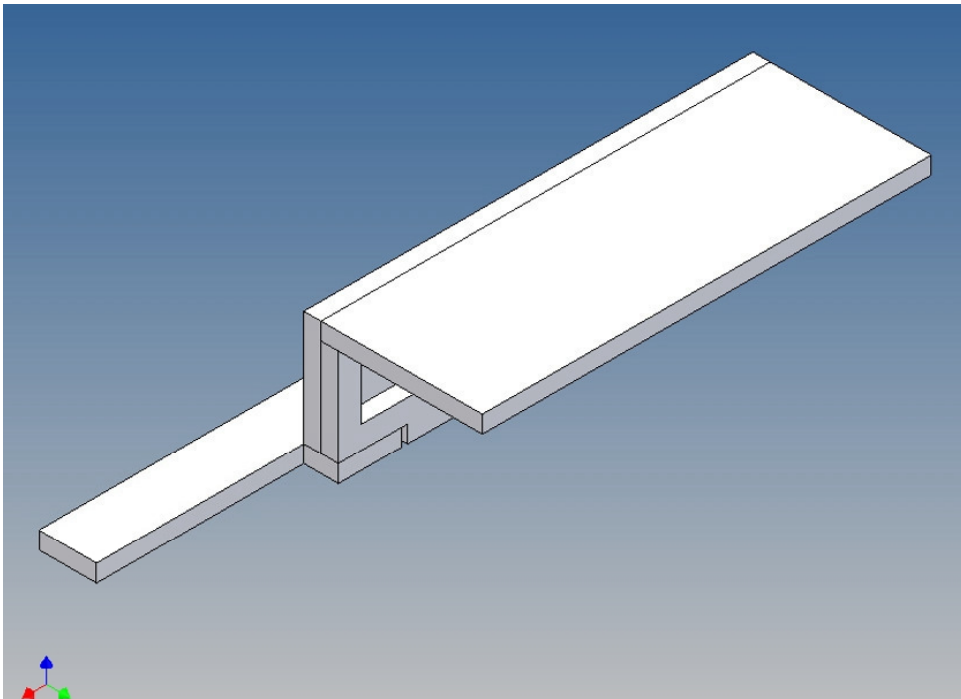
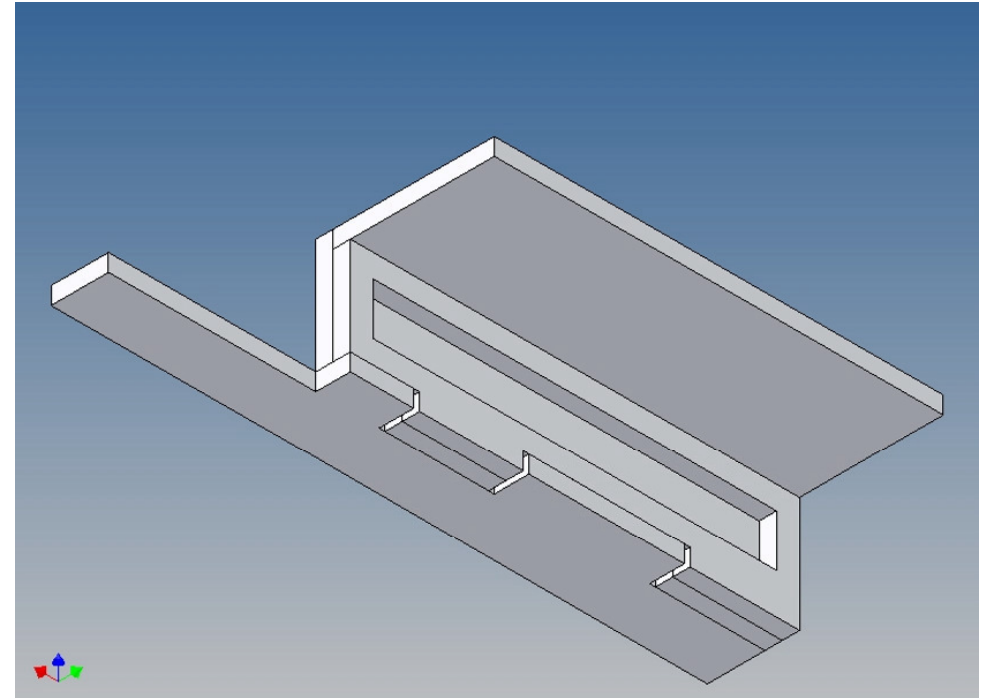
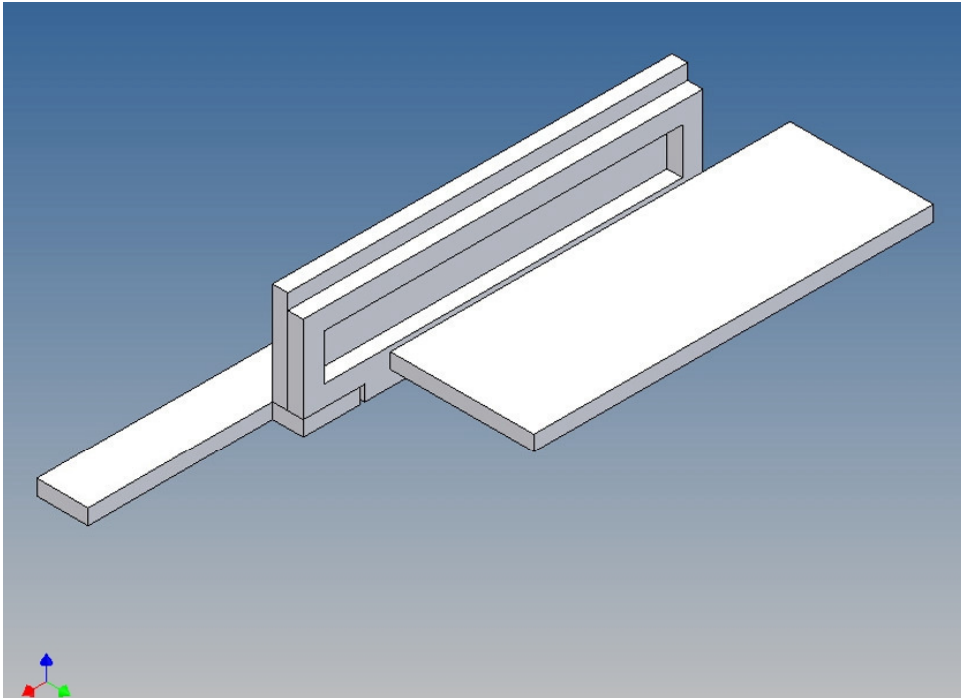
The parts are made of polystyrene, if you use super-glue in combination with activator spray, please be aware that the activator spray can destroy polystyrene – because of that you should use it very carefully or use only polystyrene-glue.

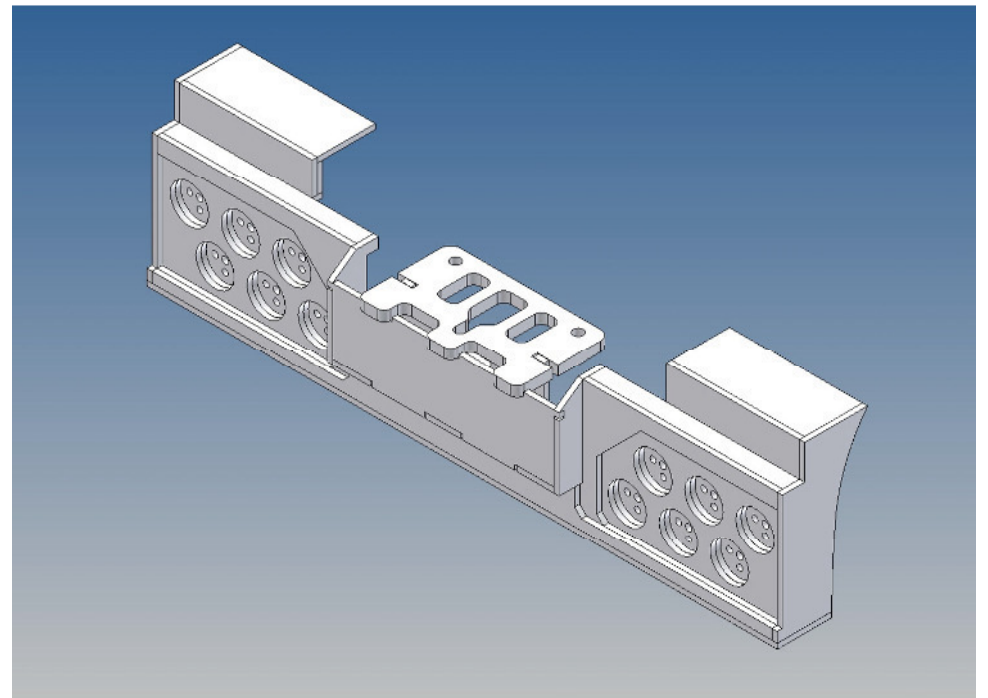
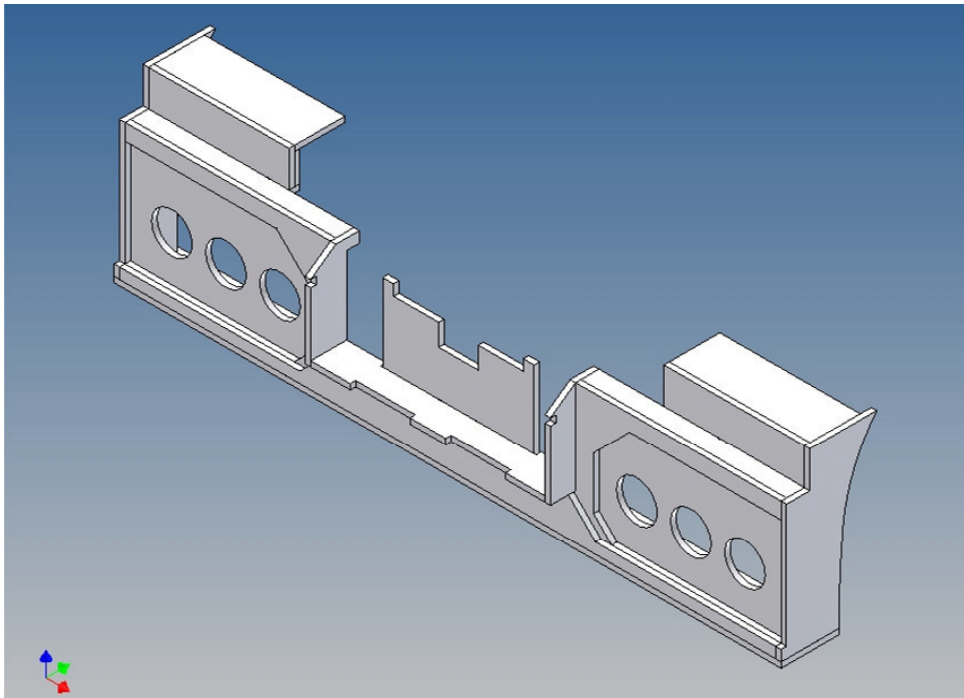
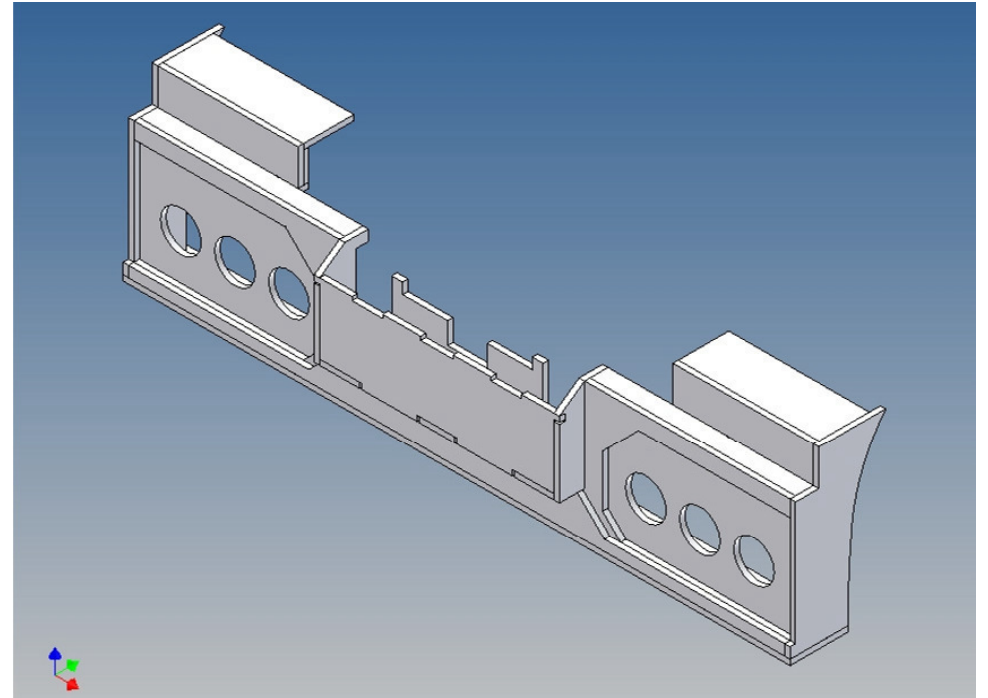
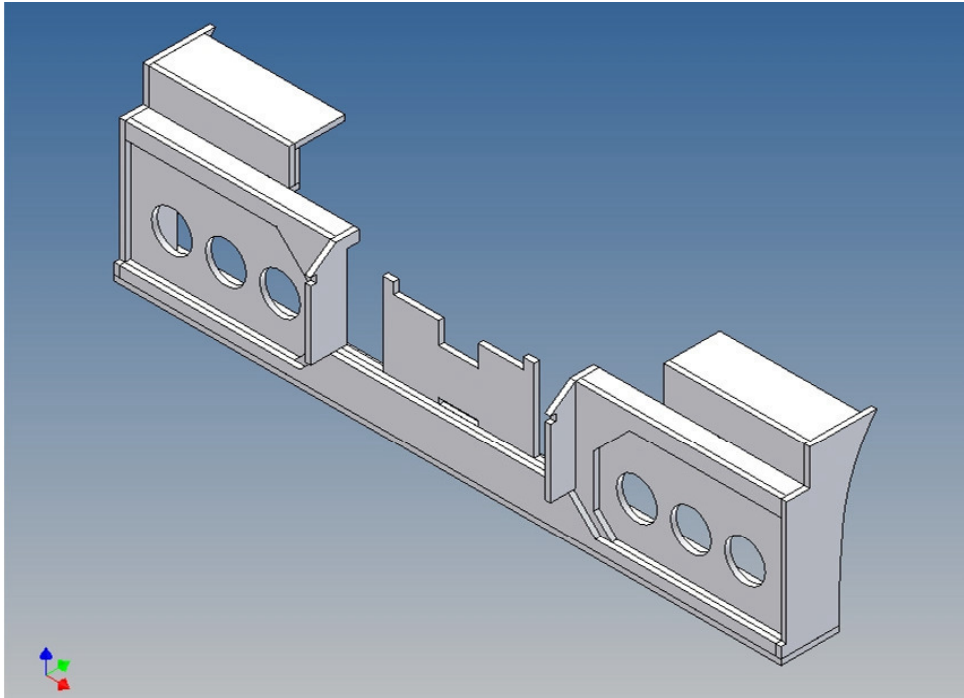


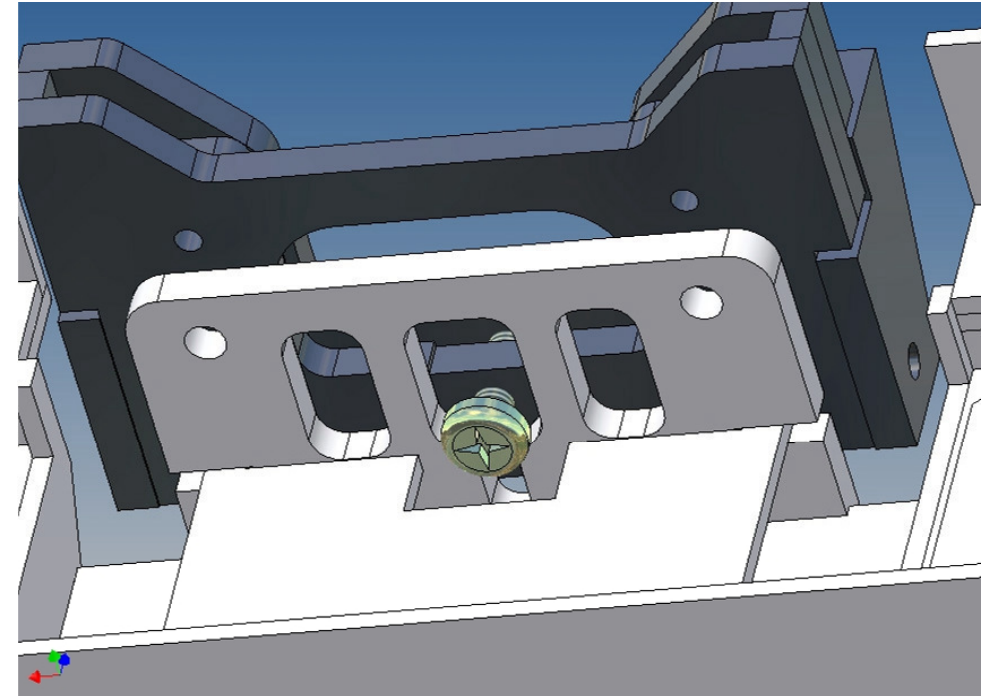
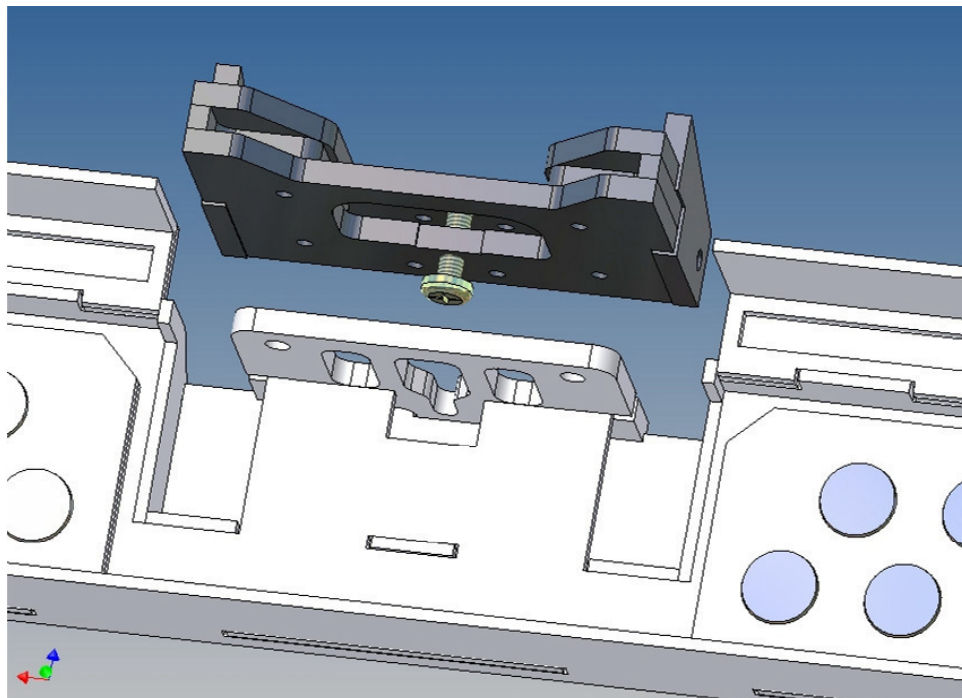
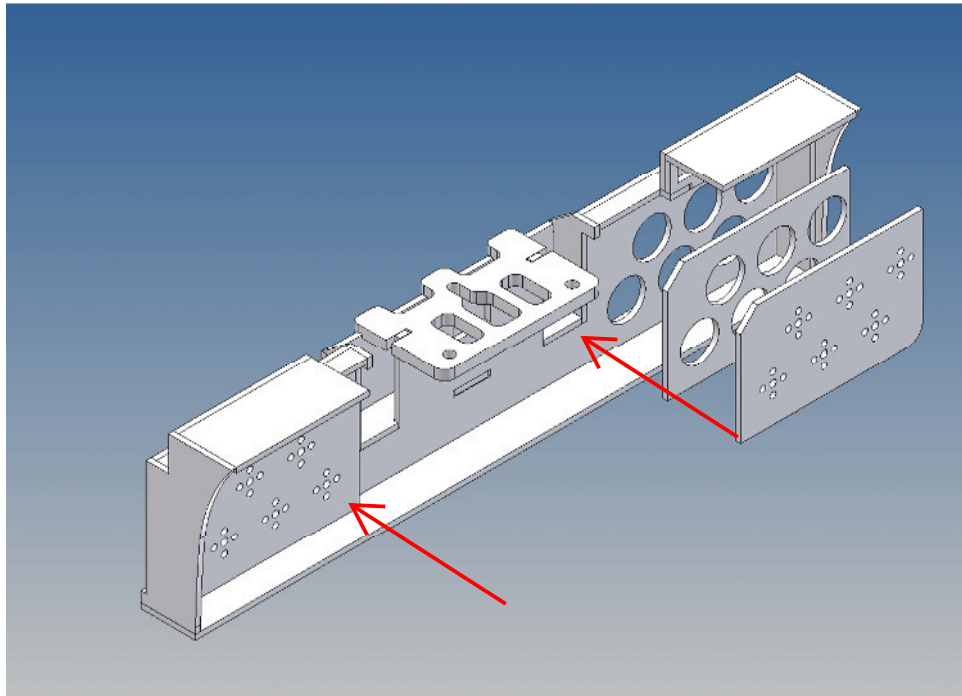


rechts spiegelbildlich
zusammensetzen /
make the right part
reversed together

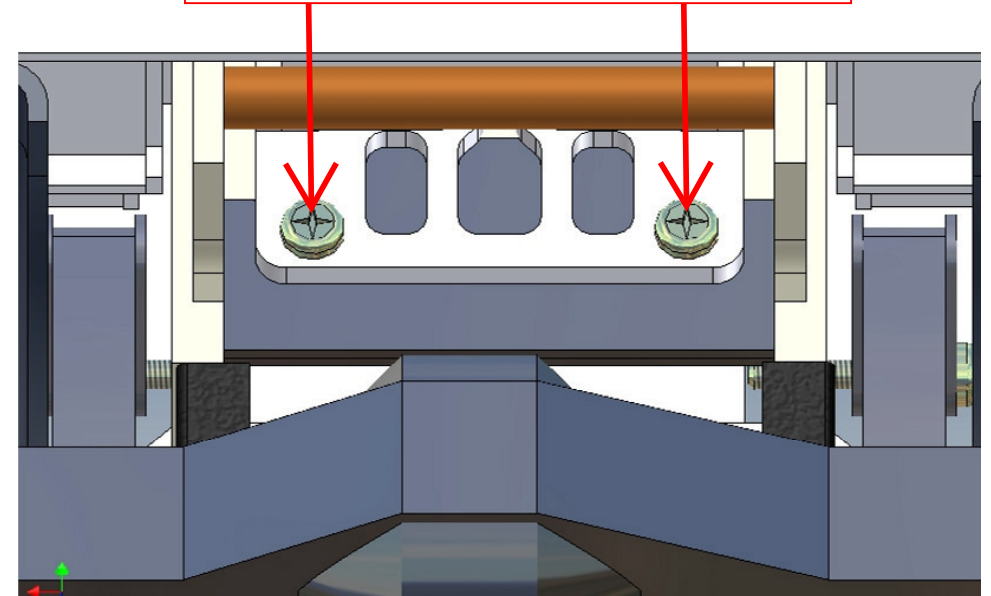








Blick von Unten: 3x8mm Schrauben benutzen (nicht enthalten) /
View from Below: 3x8mm screws (not included)



Annotation:

Good luck and have fun - your MDTechShop team

www.MDTechShop.de

For questions or replacement part requests please send a short e-mail.

Warning:

This is not a toy! It contains small parts! Keep it away from young children!