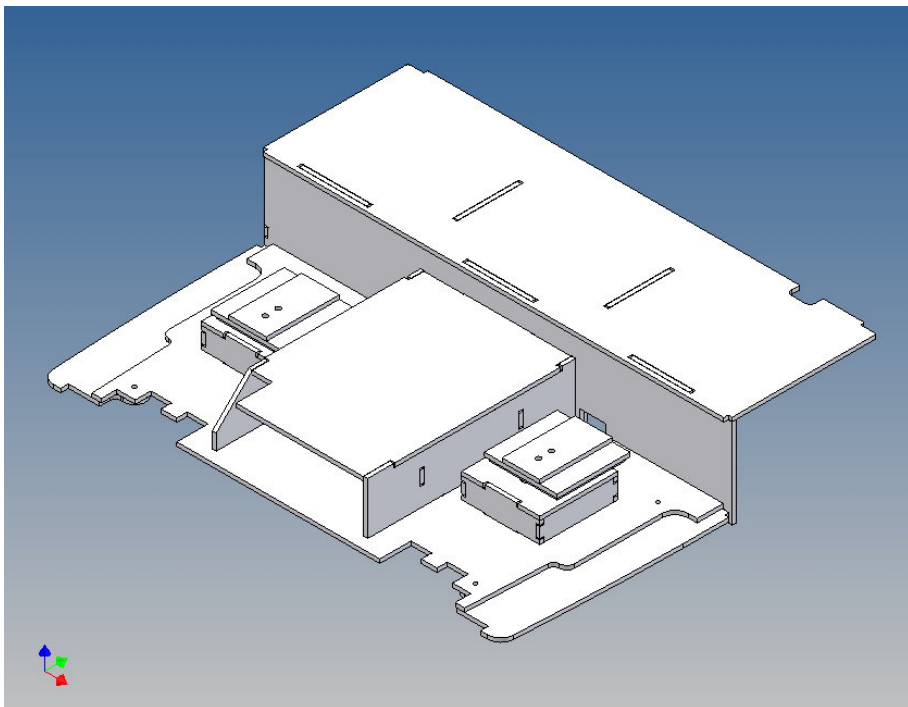


Assembly Instruction

**Driving cab floor assembly kit for
TAMIYA Volvo FH12 (1:14)
- cab bed + seat mounting brackets -**

Best.-Nr.: 2016-9005-06



Version 1.0 – 13.05.2016

General Description

This kit includes parts for a driving cab floor for the TAMIYA Volvo FH12 (M 1:14).

The cab floor will be mounted under the original unit with drawers at the dashboard and hides the view onto the RC equipment through the windshield.

The original platform above the electric motor should be removed, additionally we have an electronic box in our shop to optimize the space under the driver cabin for RC devices.

or positioning the driver cabin's tilt limiter we have put a template on the cabin floor, so that the tilt limiter rod is no longer visible inside of the cabin.

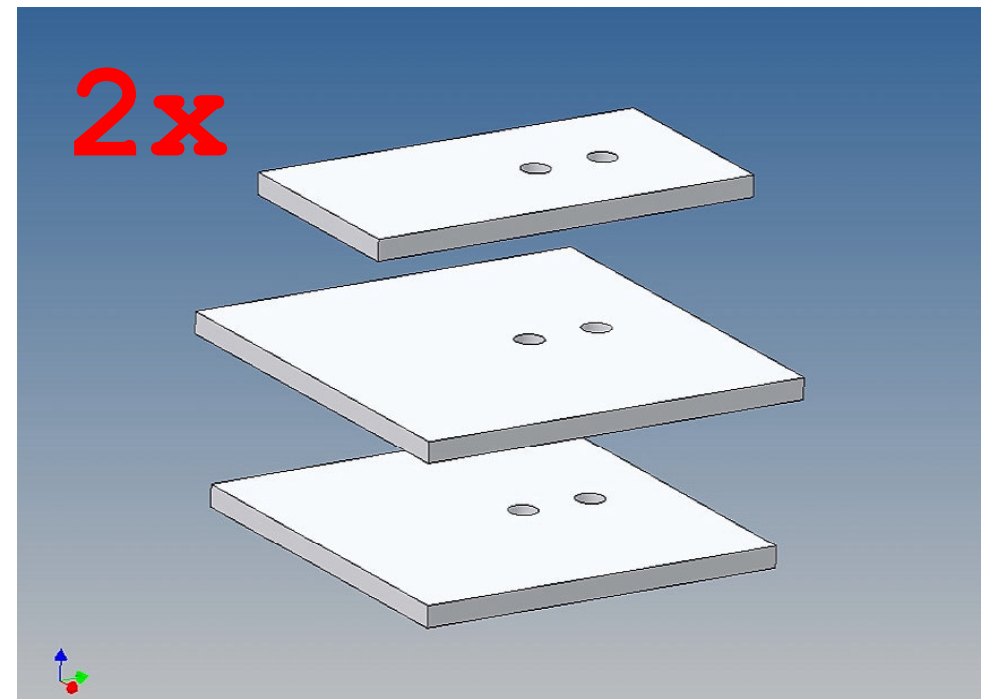
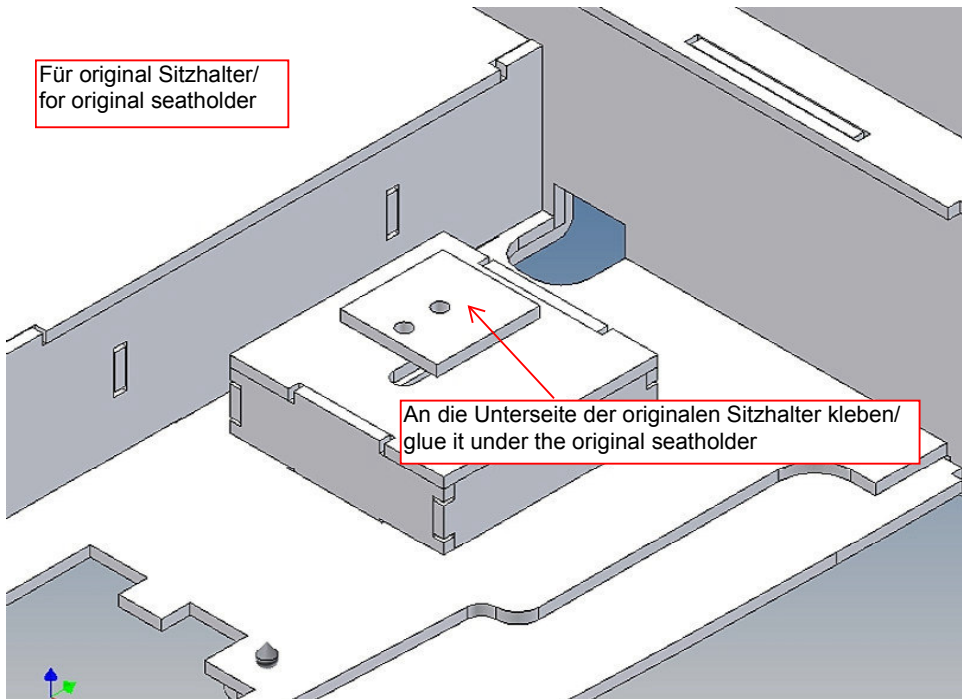
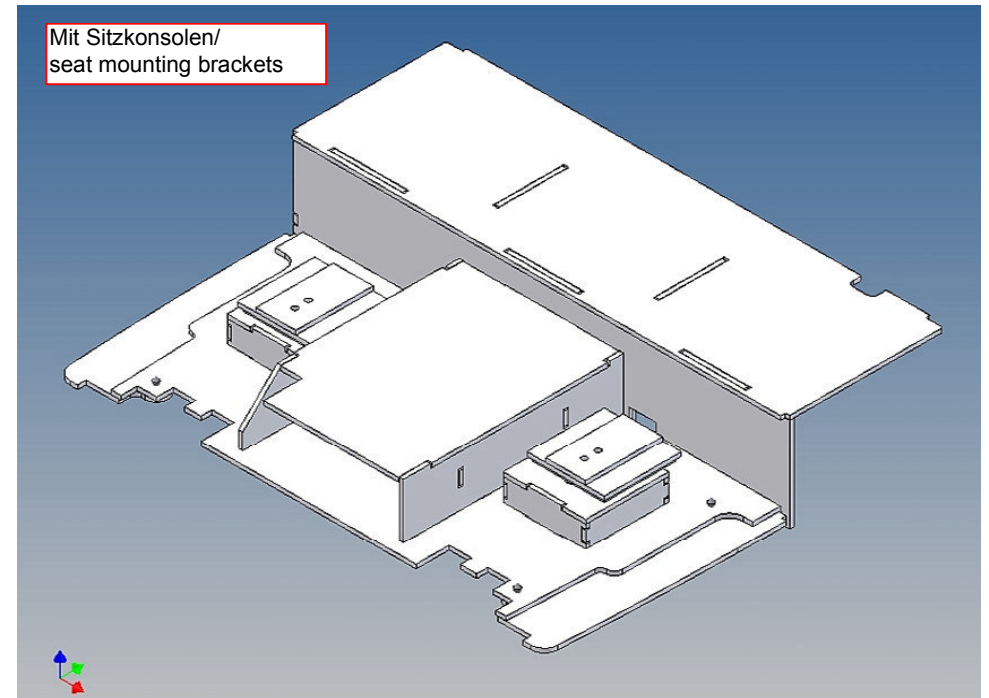
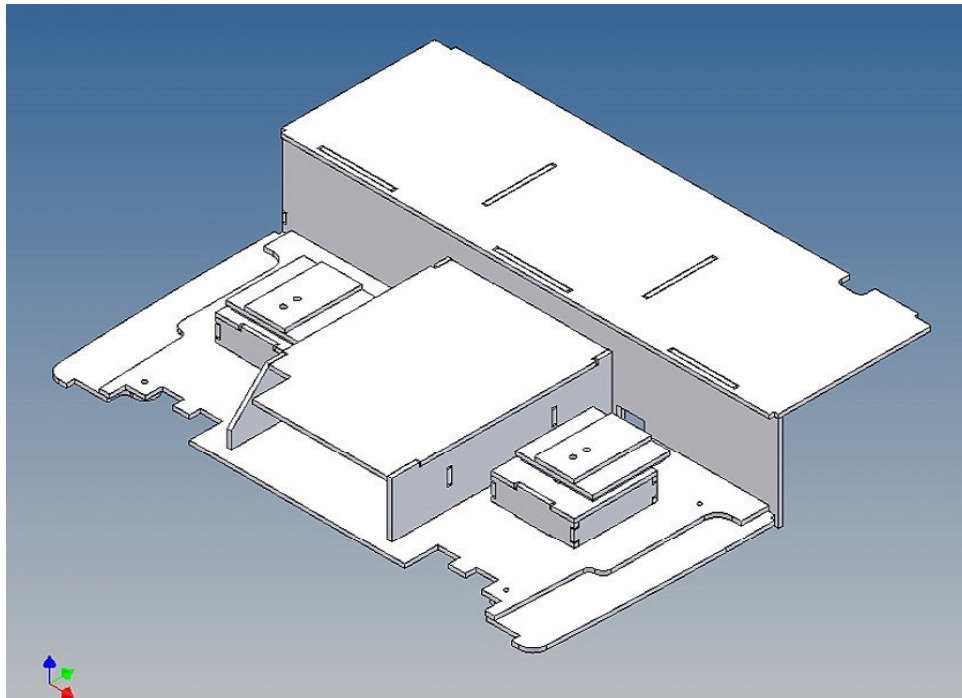
The seats are mounted on separate mounting brackets and are screwed with the cab floor.

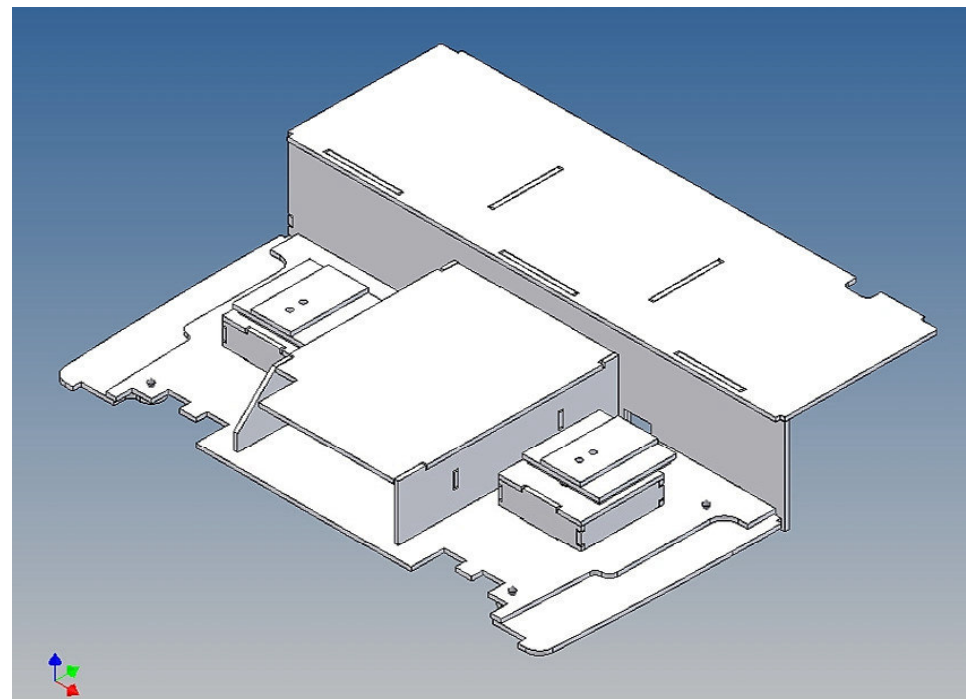
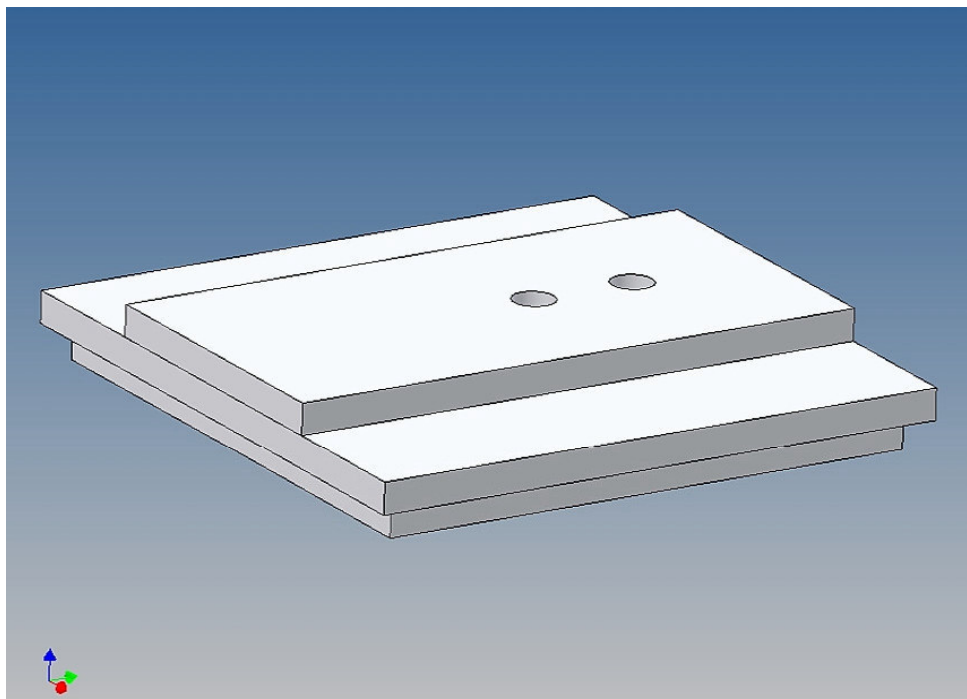
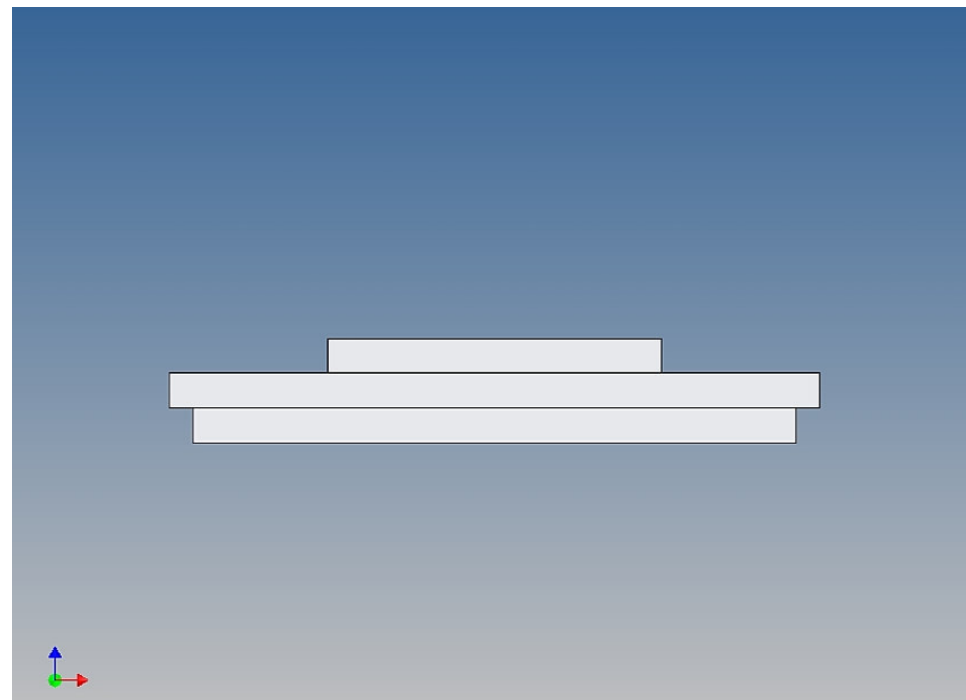
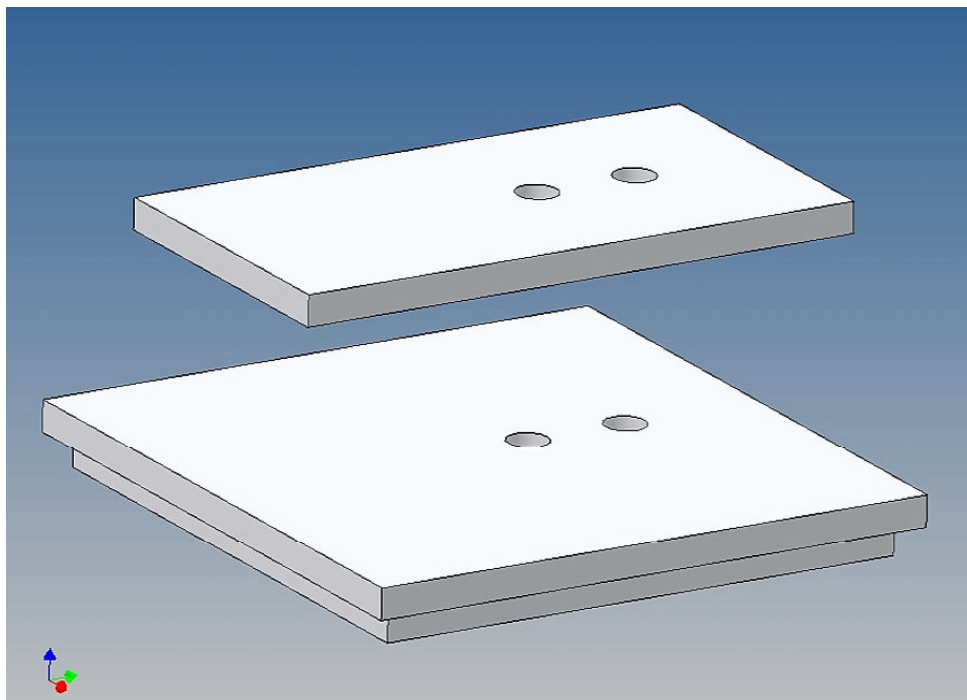
Assembly Procedure

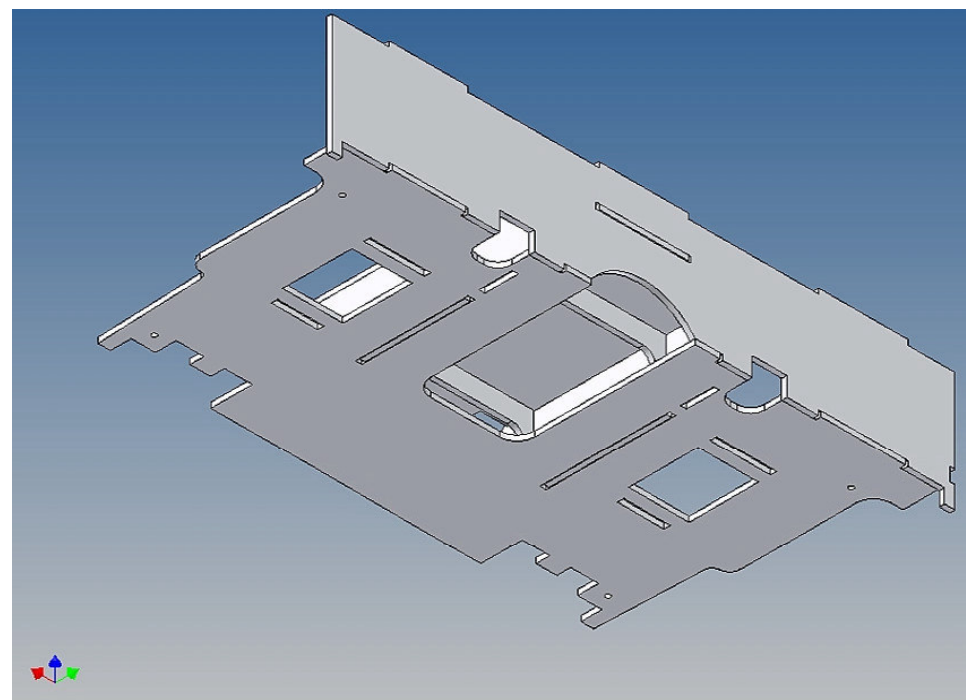
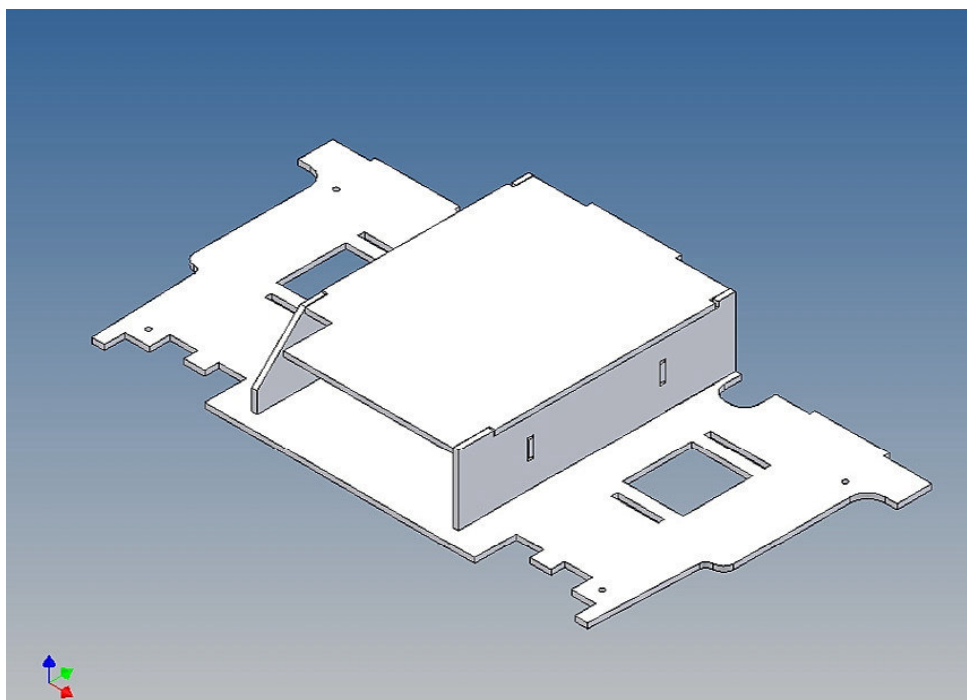
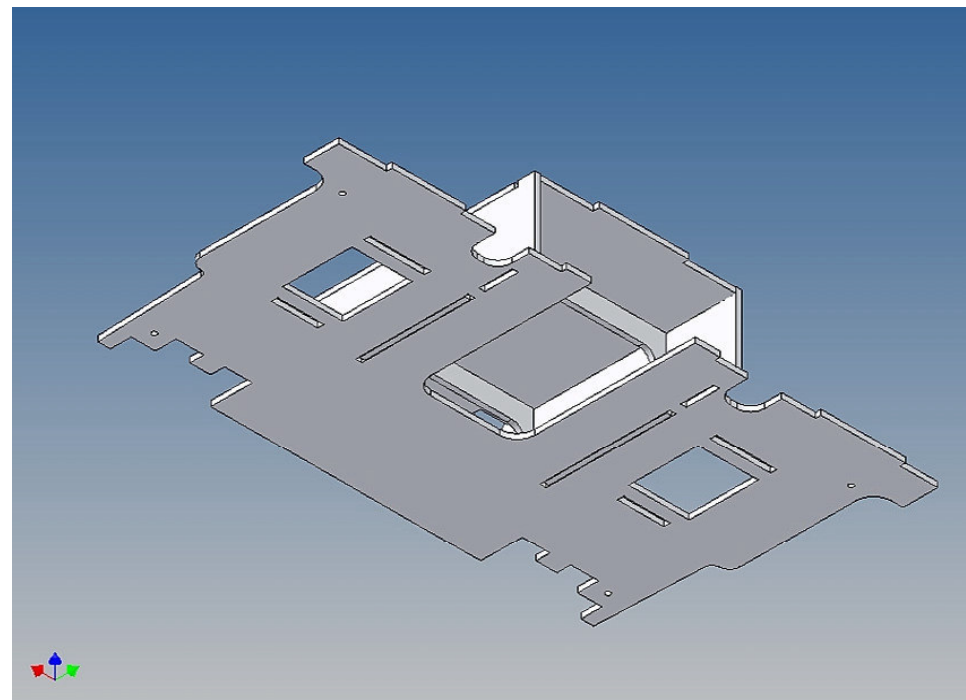
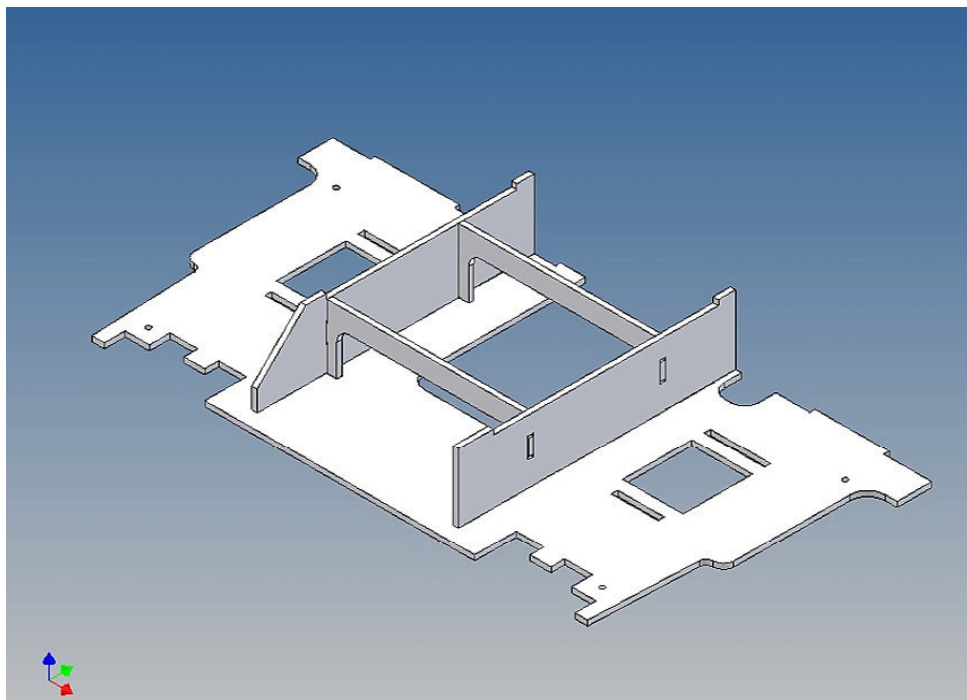
Before you put the parts together please read the assembly instructions carefully and pay attention to the assembly sequence and test the fitting accuracy of the parts before gluing them together.

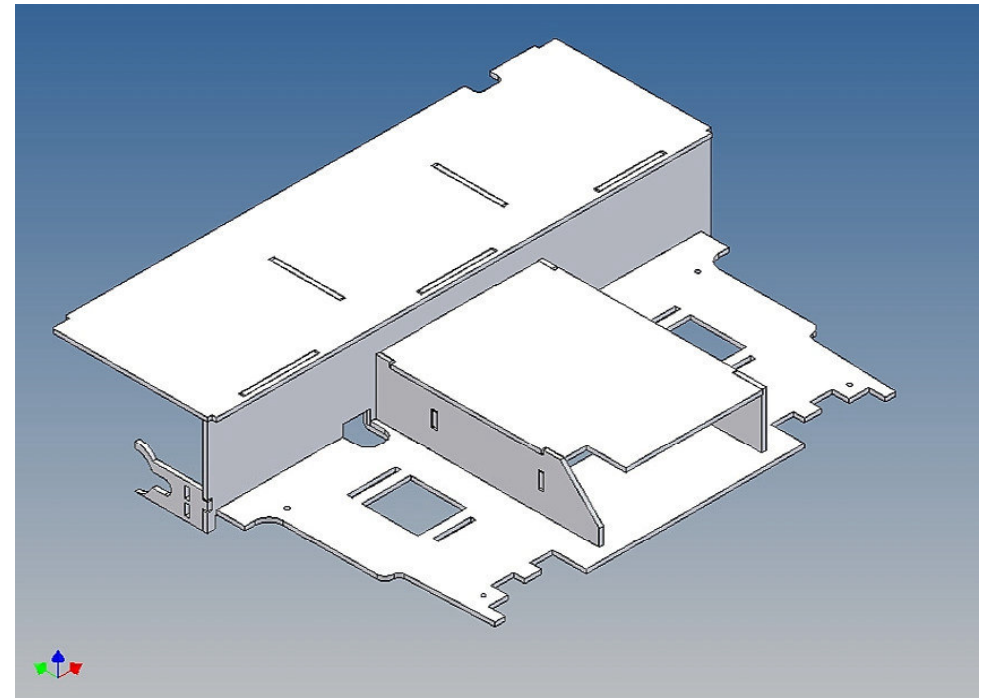
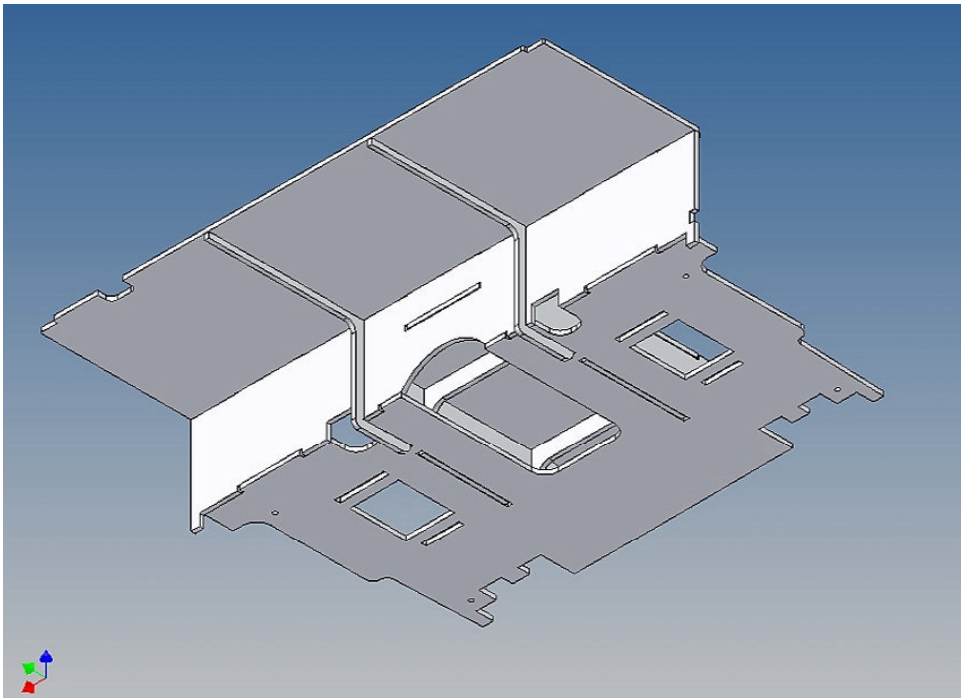
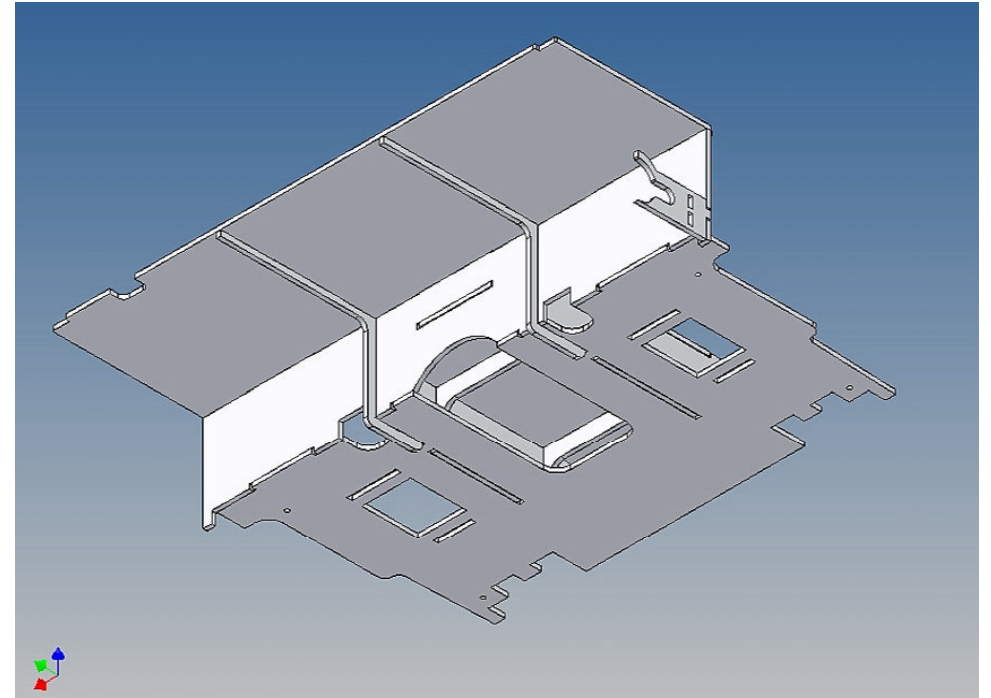
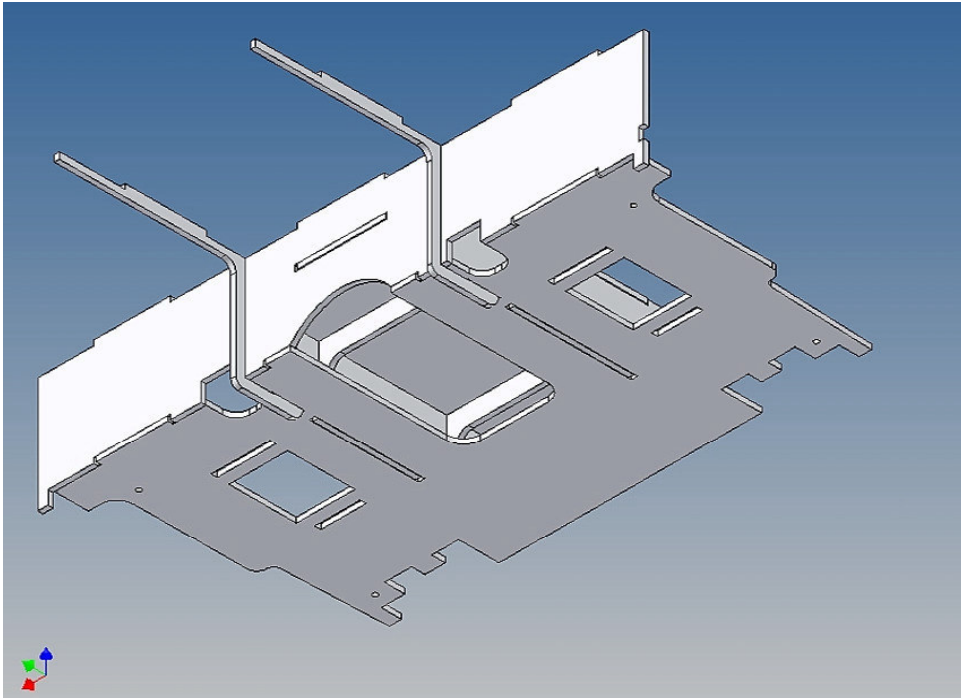
It is helpful to fix the parts at first only on a few points with super-glue and after a check along the edges fully with super-glue or a polystyrene-glue.

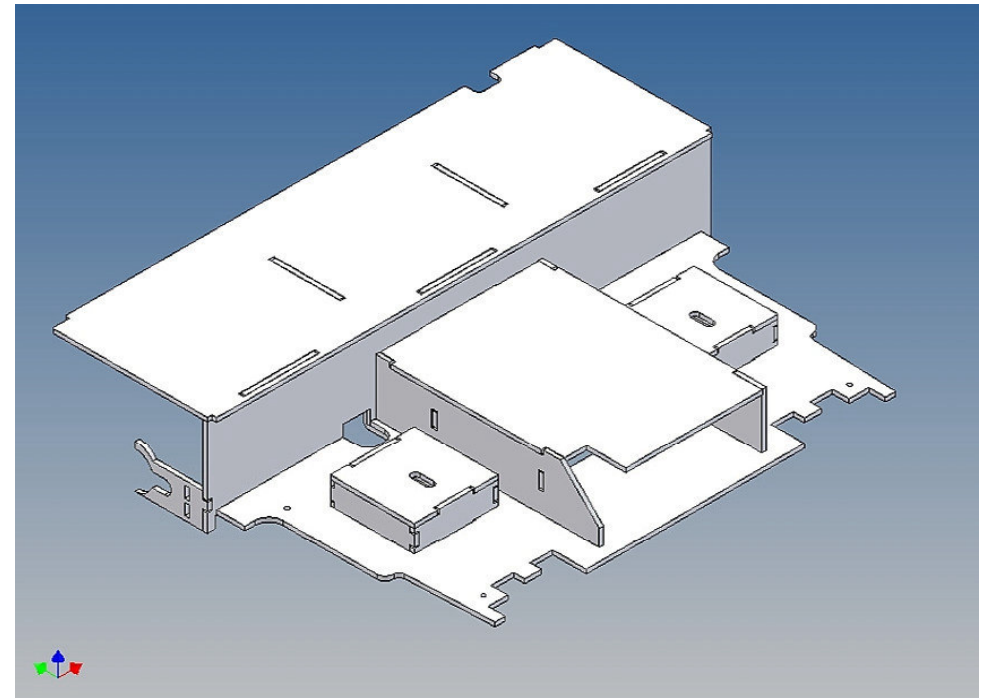
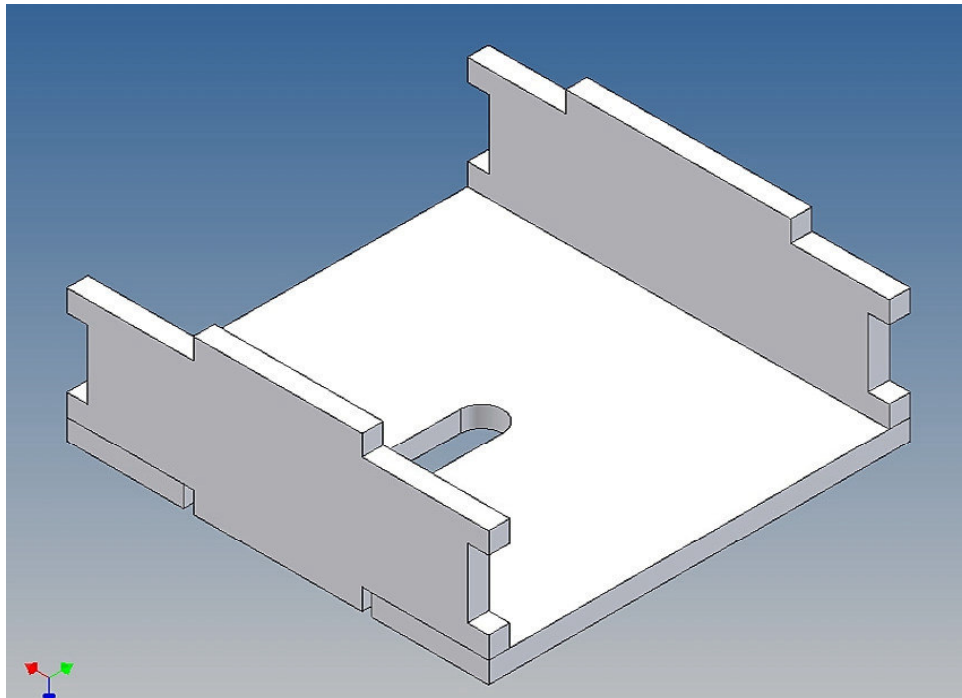
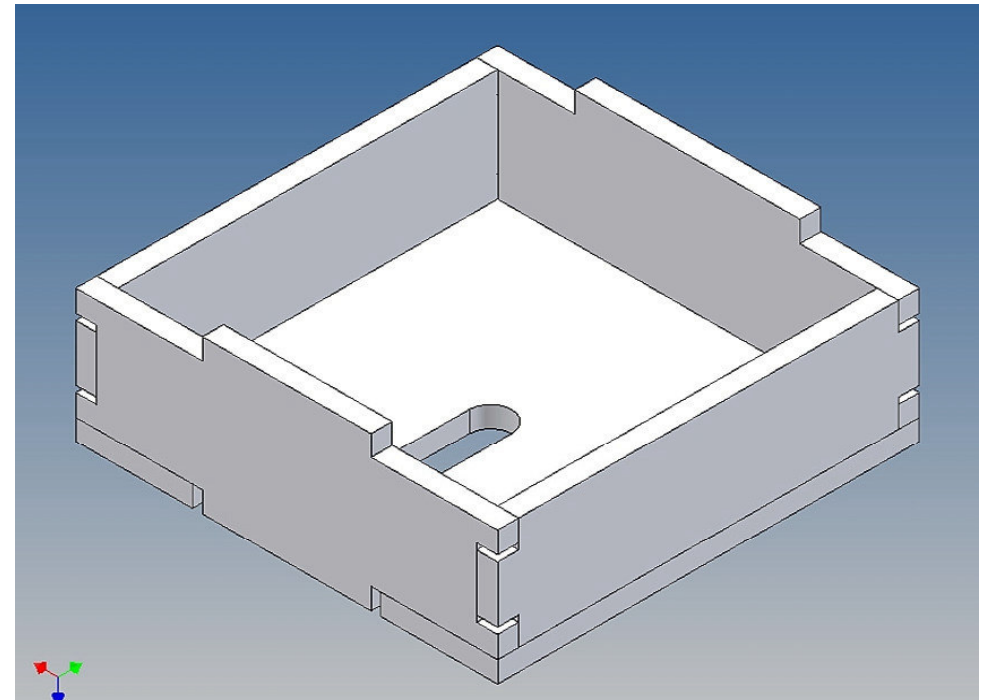
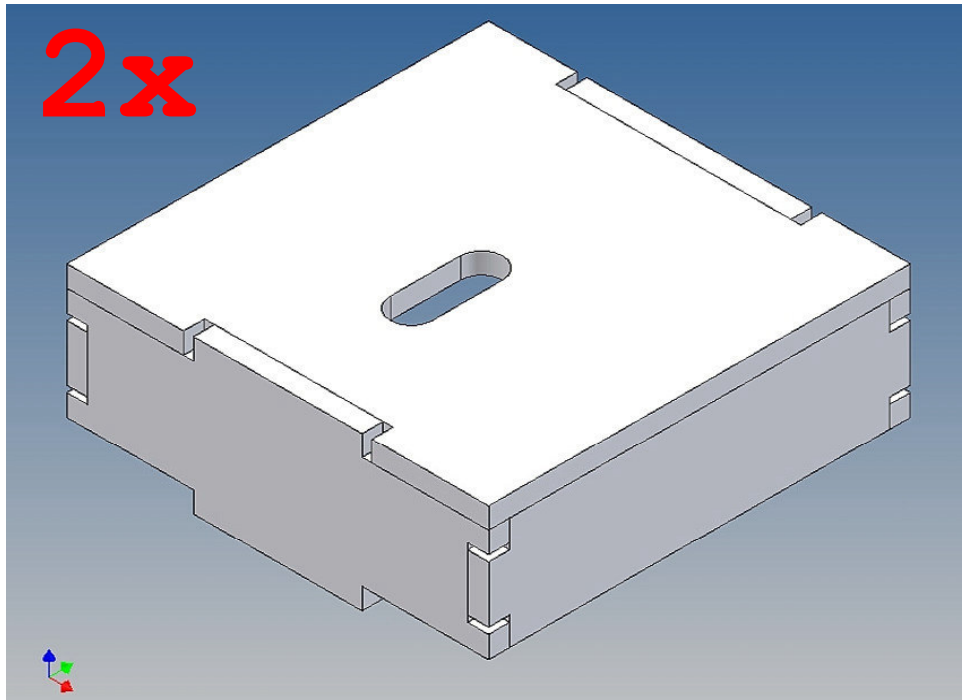
The parts are made of polystyrene, if you use super-glue in combination with activator spray, please be aware that the activator spray can destroy polystyrene – because of that you should use it very carefully or use only polystyrene-glue.

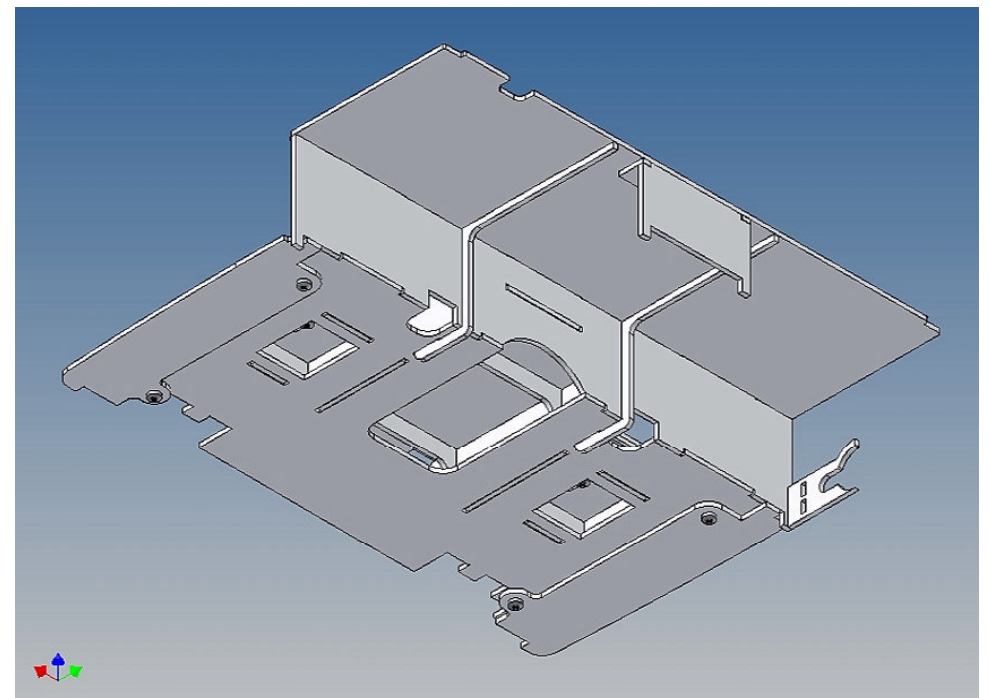
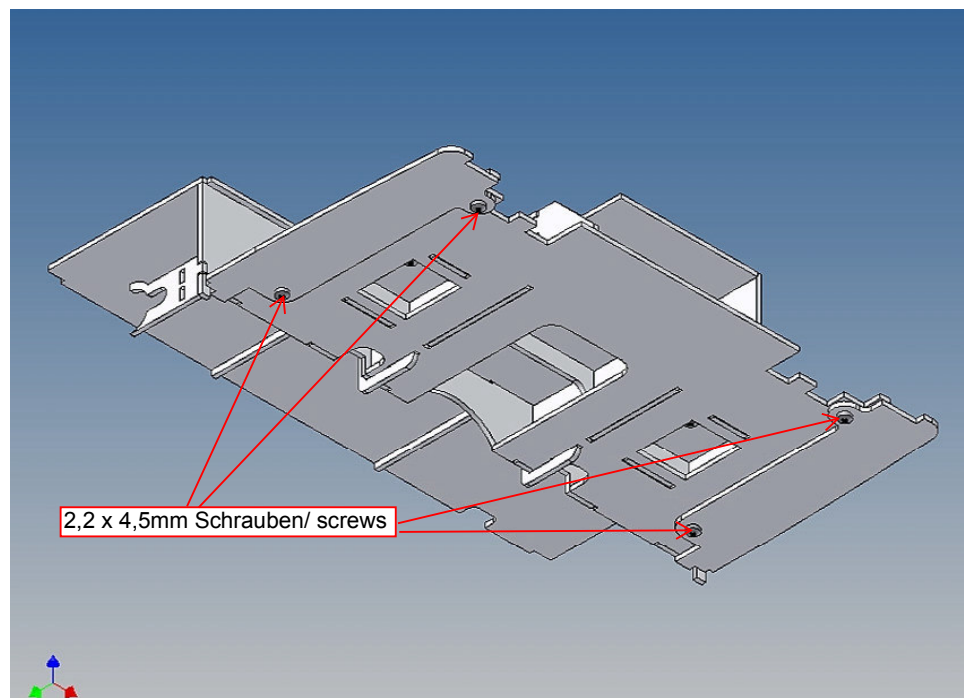
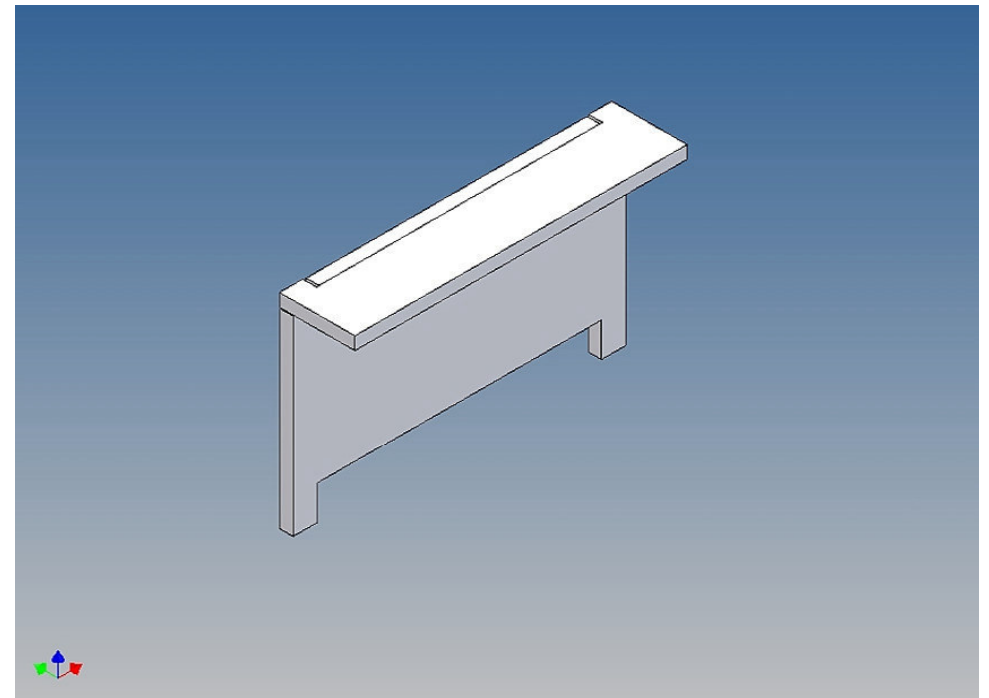
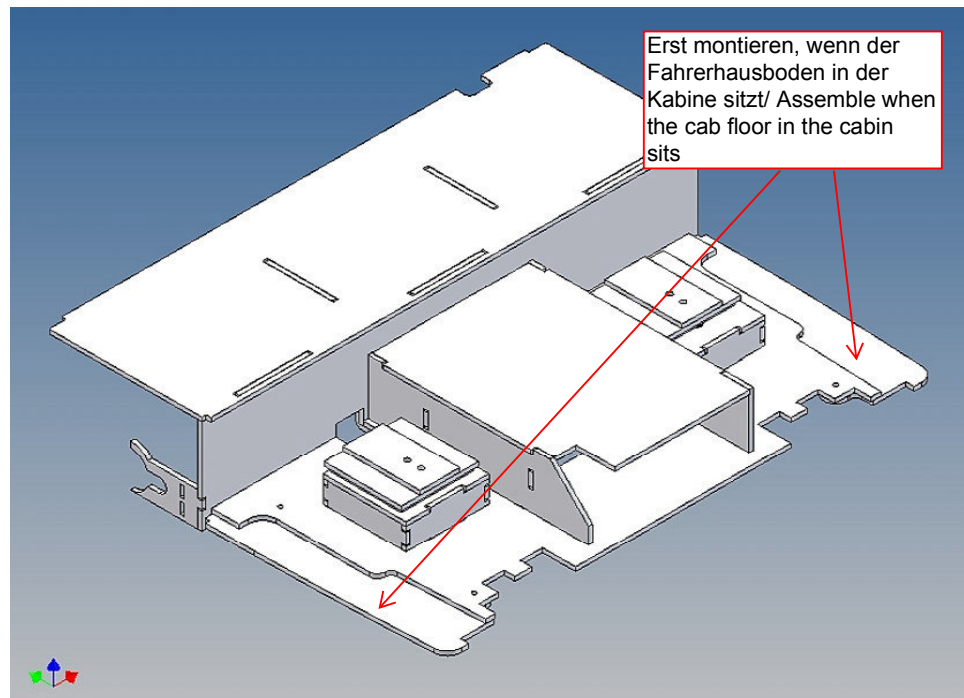


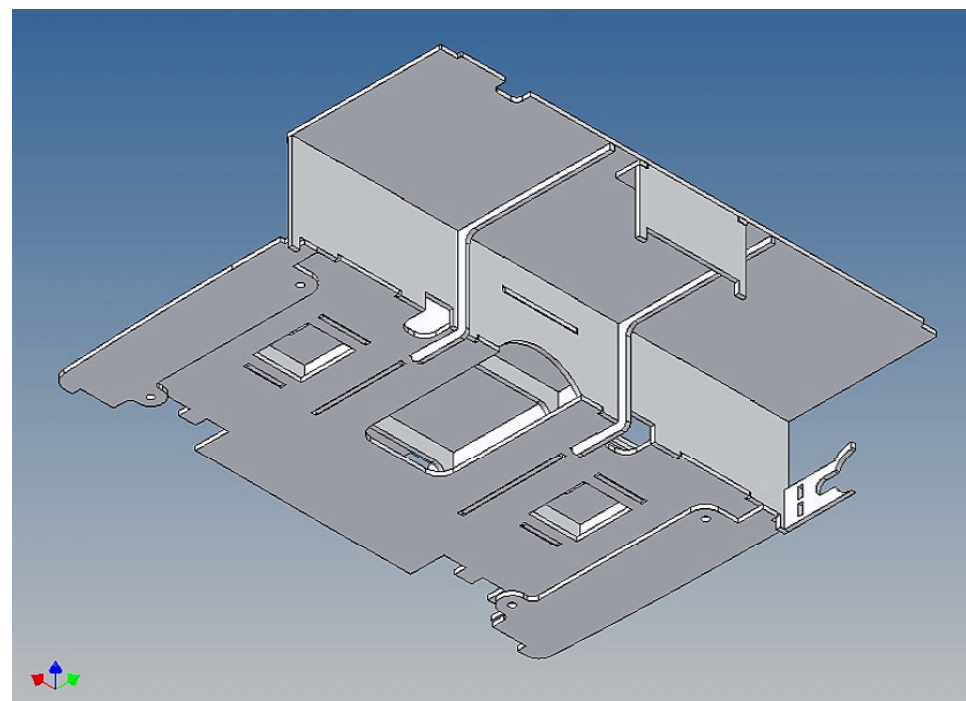
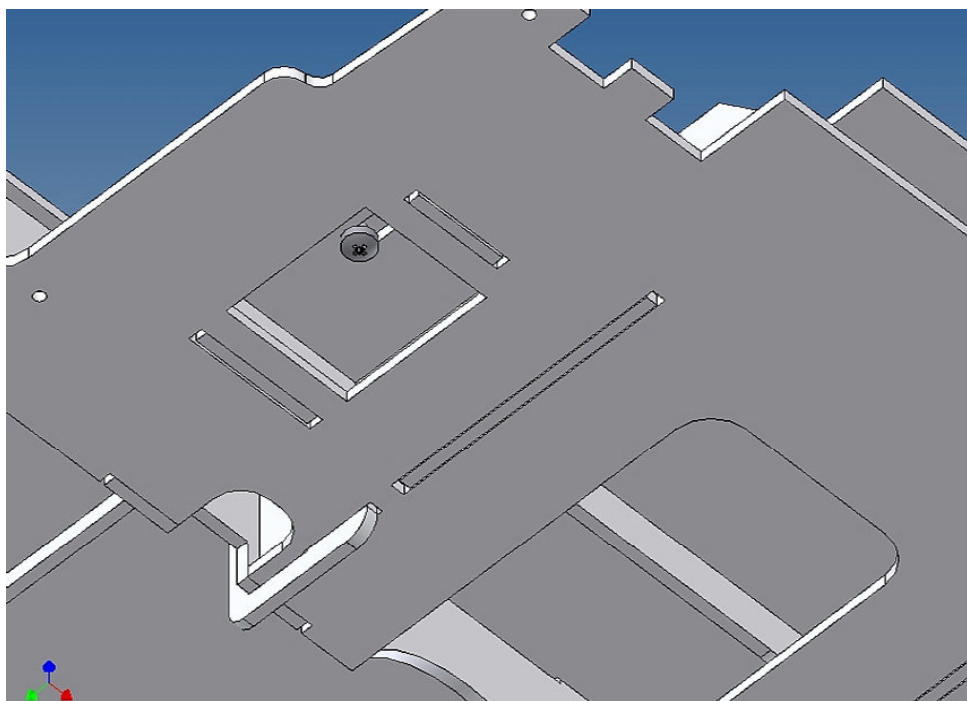
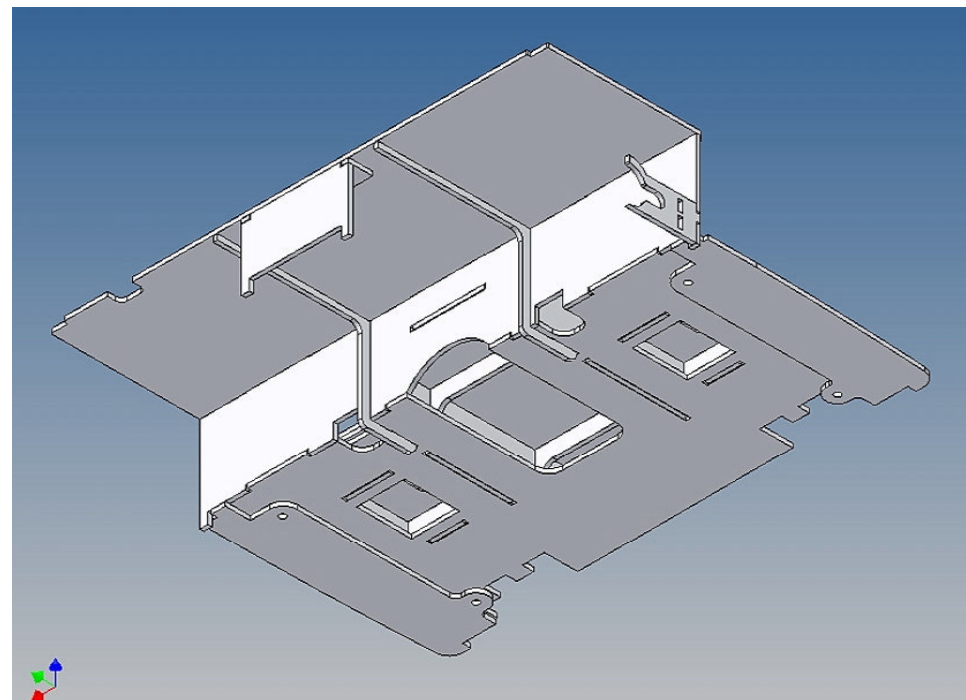
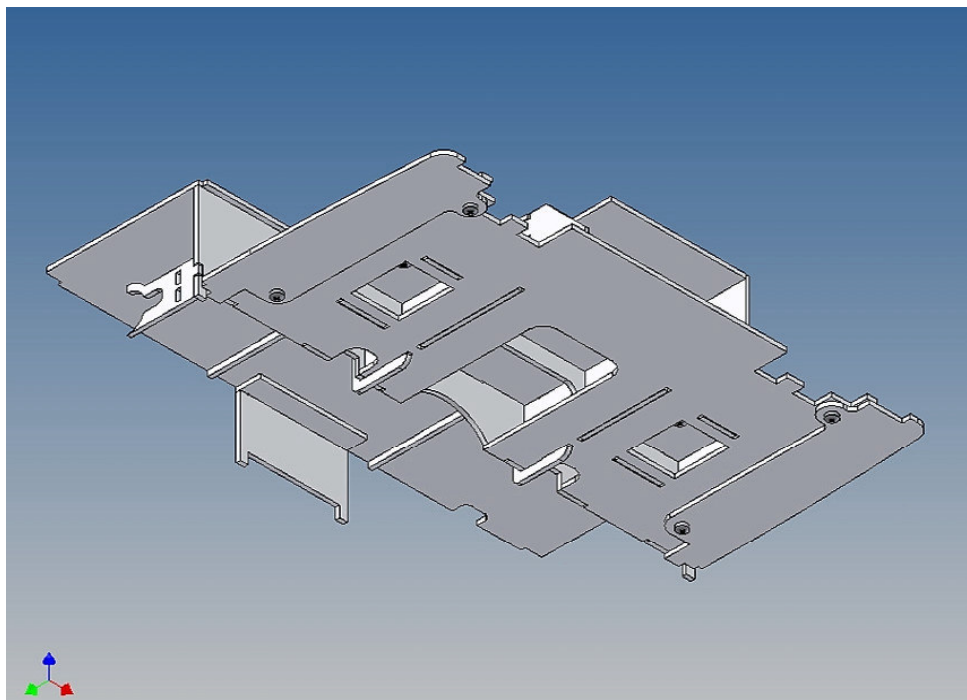


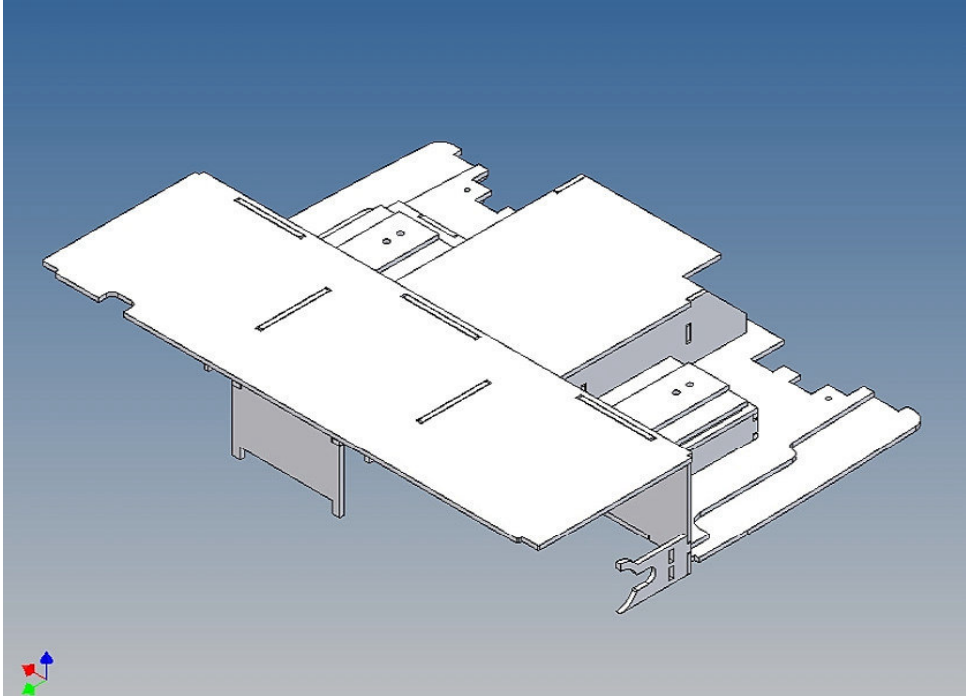












Annotation:

An electronic box is also available in our shop which fits perfect to our cab floor.

Good luck and have fun - your MDTechShop team

www.MDTechShop.de

For questions or replacement part requests please send a short e-mail.

Warning:

This is not a toy! It contains small parts! Keep it away from young children!