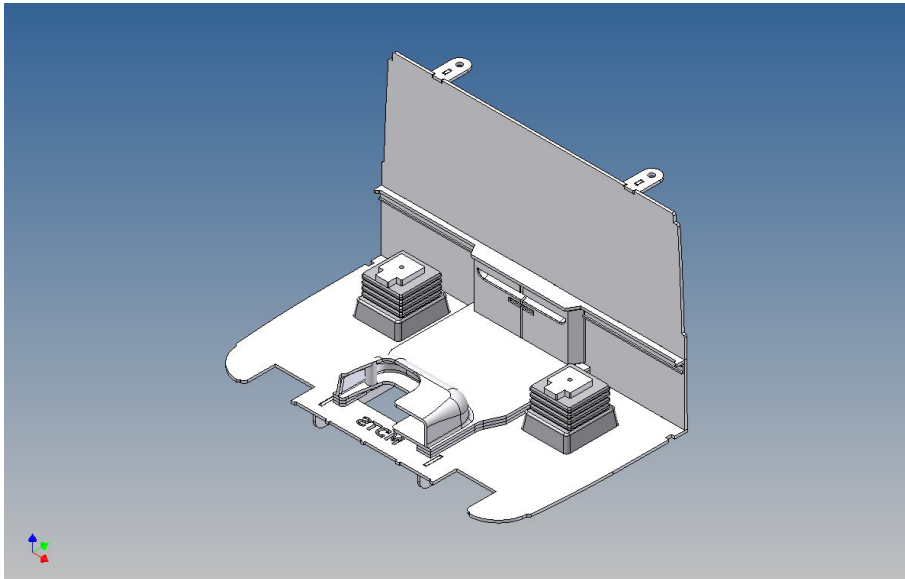


## Assembly Instruction

**Driving cab floor assembly kit for  
TAMIYA Volvo FH16 (1:14,5)  
- dividing wall + seat mounting brackets -**

**Best.-Nr.: 2020-900A-07**



**Version 1.0 – 05.04.2022**

## General Description

This kit includes parts for a driving cab floor for the TAMIYA Volvo FH12 (M 1:14,5).

The cab floor will be mounted under the original unit with drawers at the dashboard and hides the view onto the RC equipment through the windshield.

The original platform above the electric motor should be removed.

The seats are mounted on separate mounting brackets and are screwed with the cab floor.

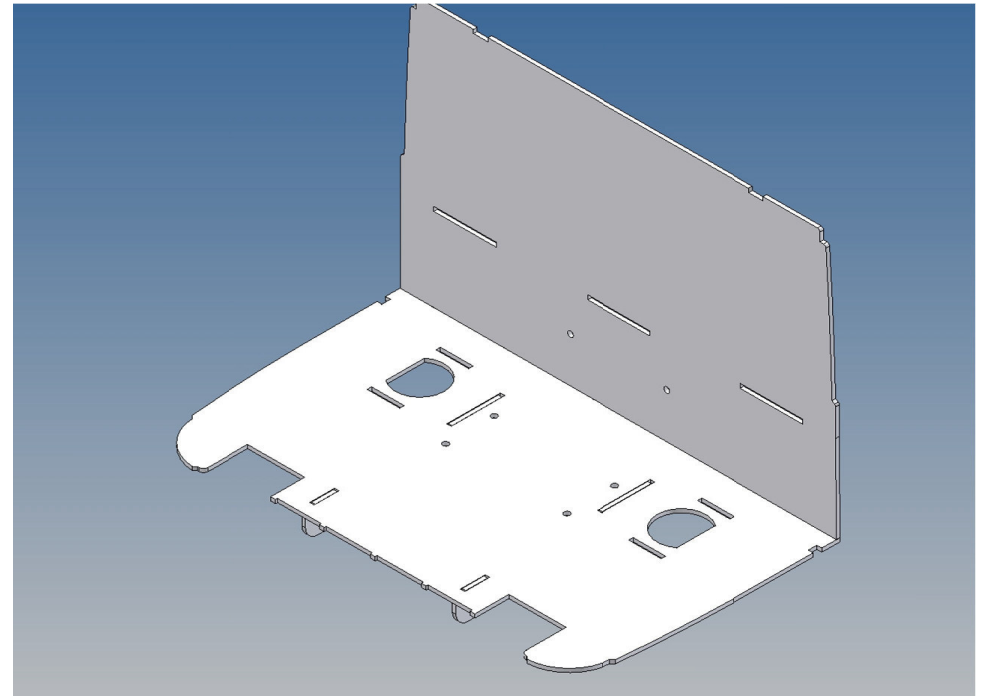
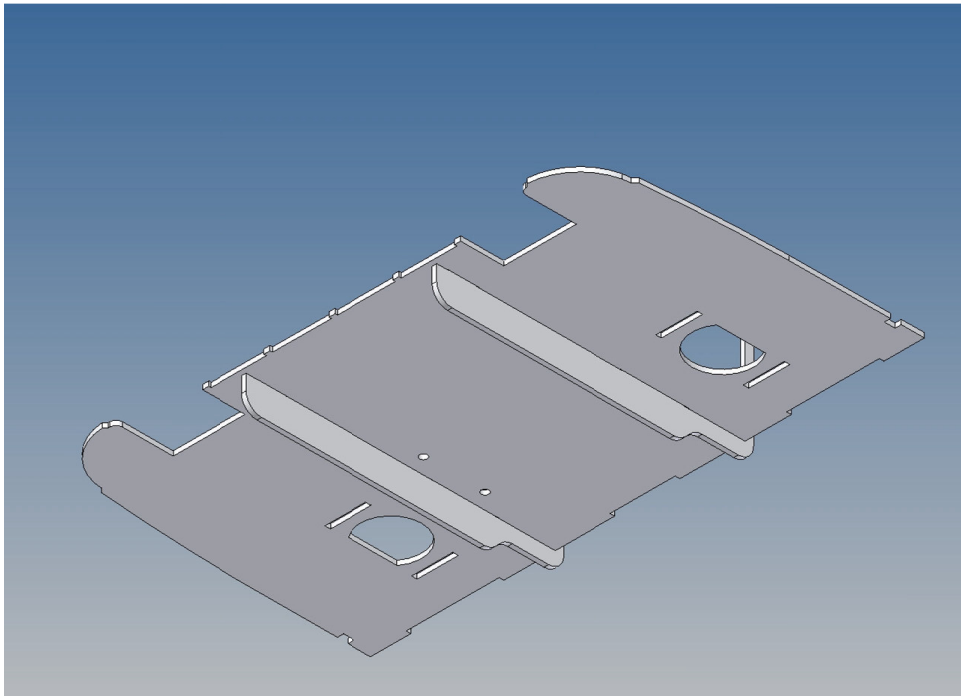
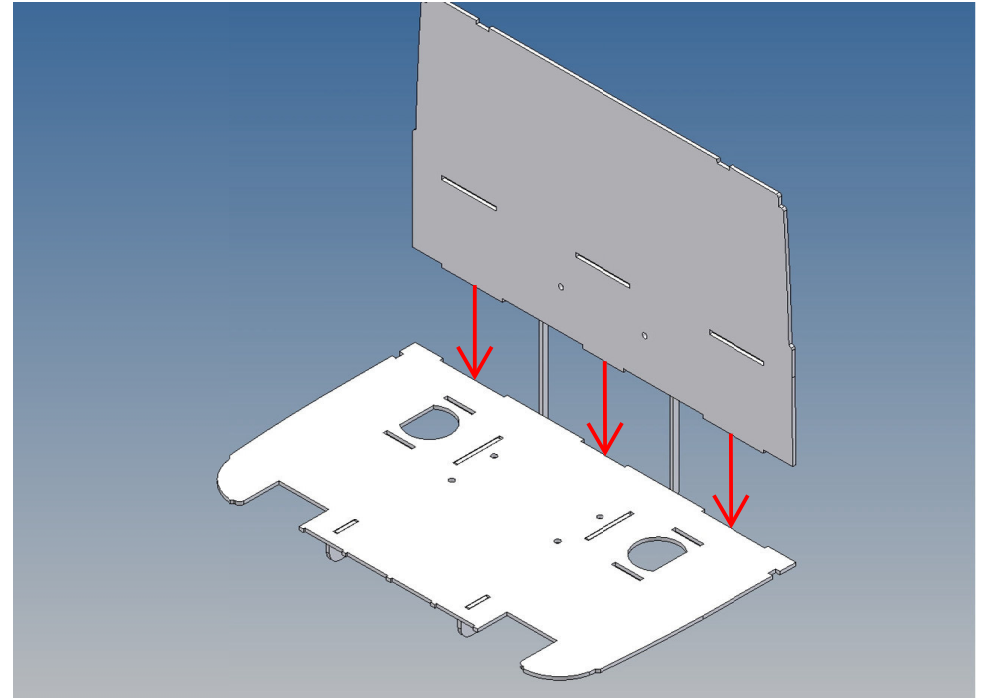
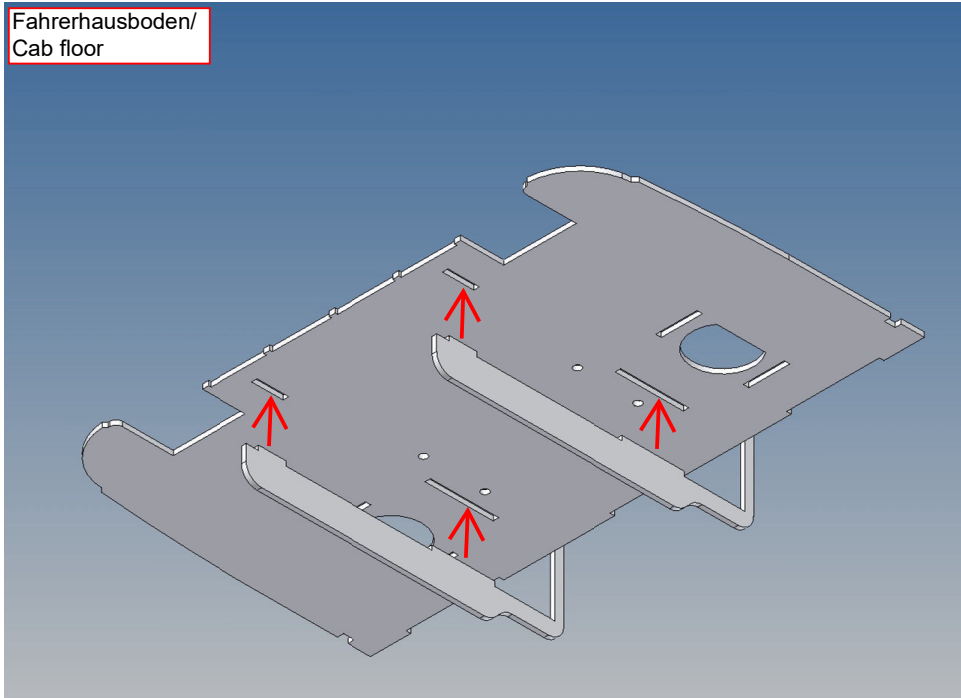
## Assembly Procedure

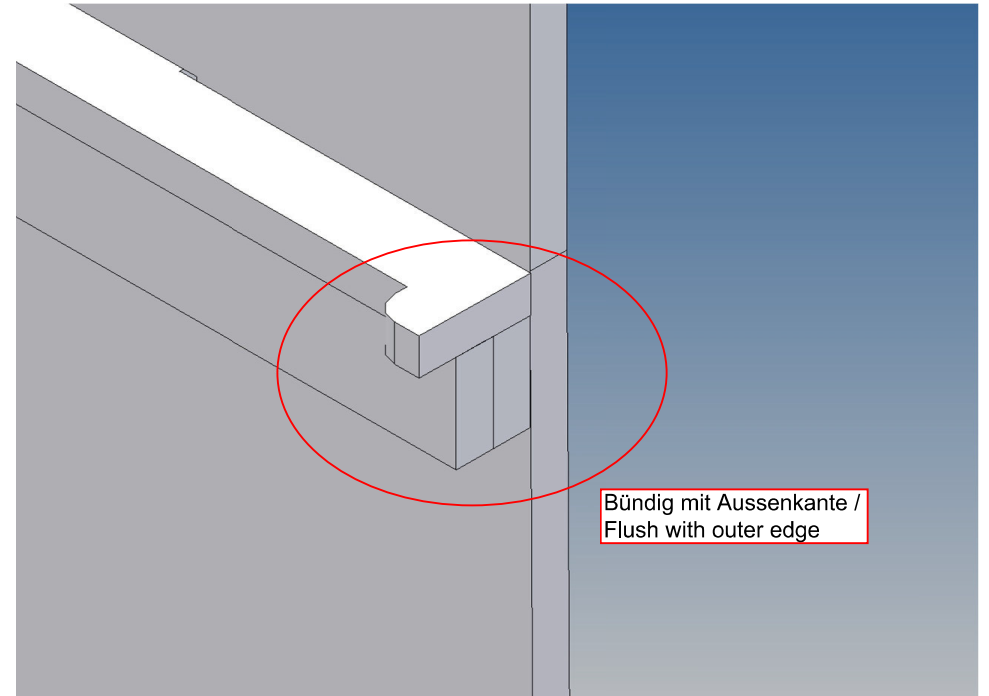
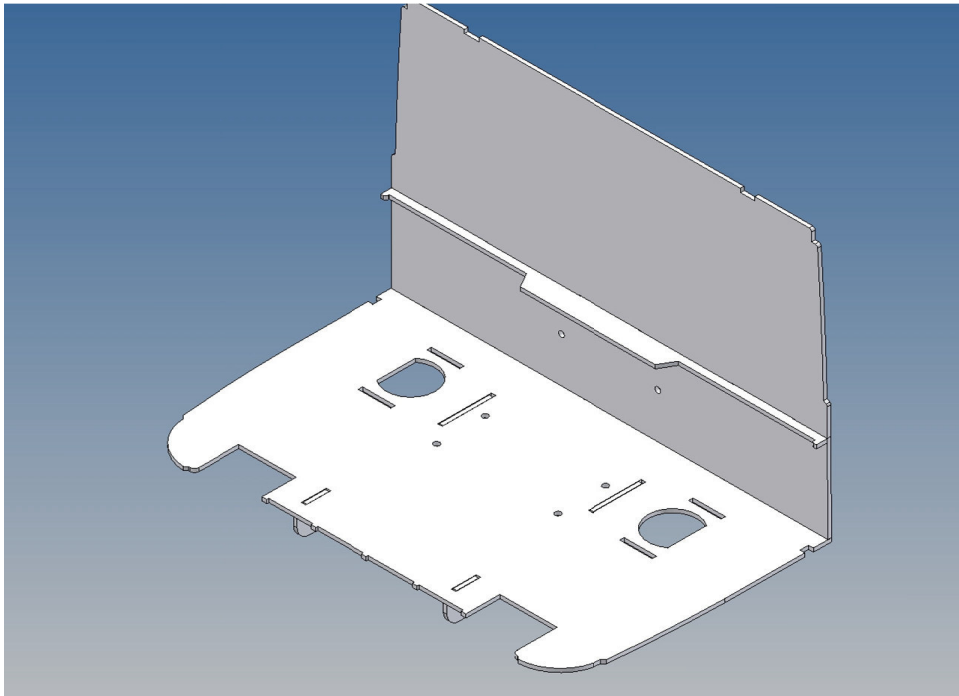
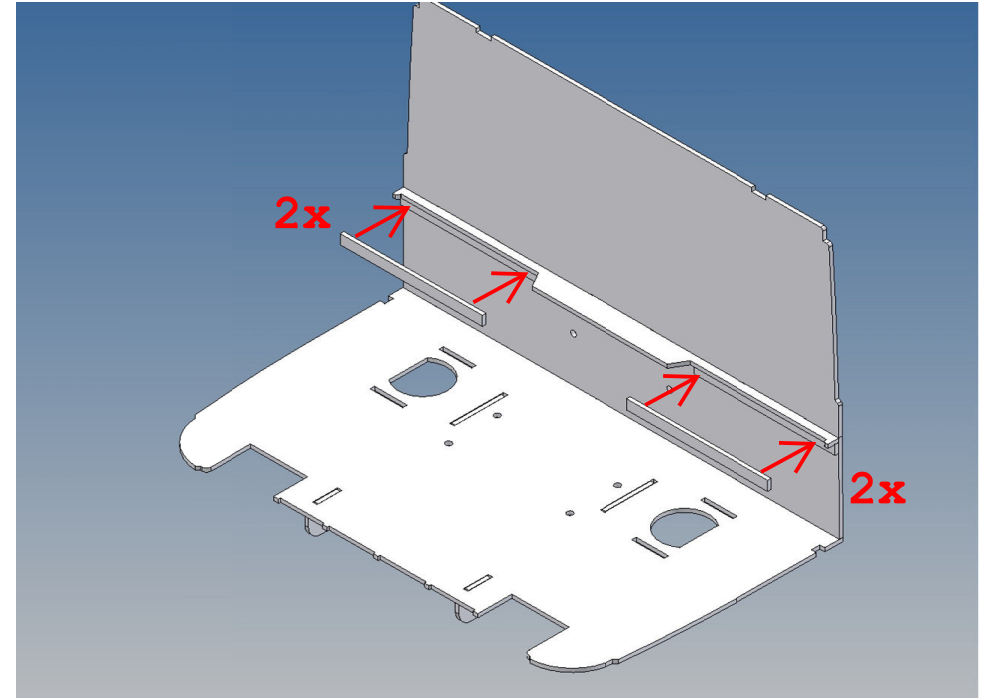
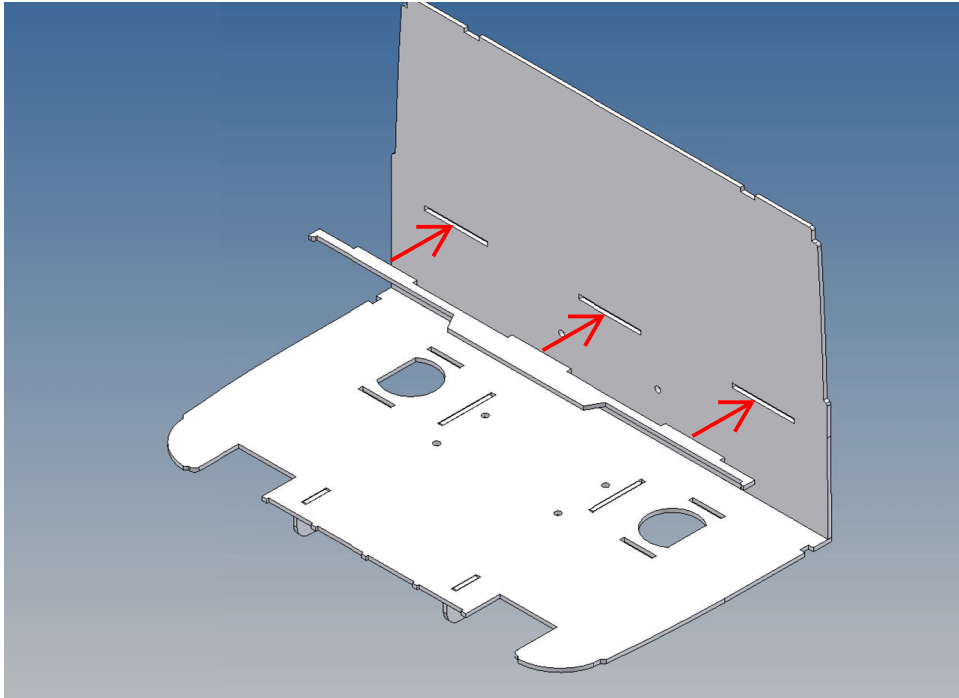
Before you put the parts together please read the assembly instructions carefully and pay attention to the assembly sequence and test the fitting accuracy of the parts before gluing them together.

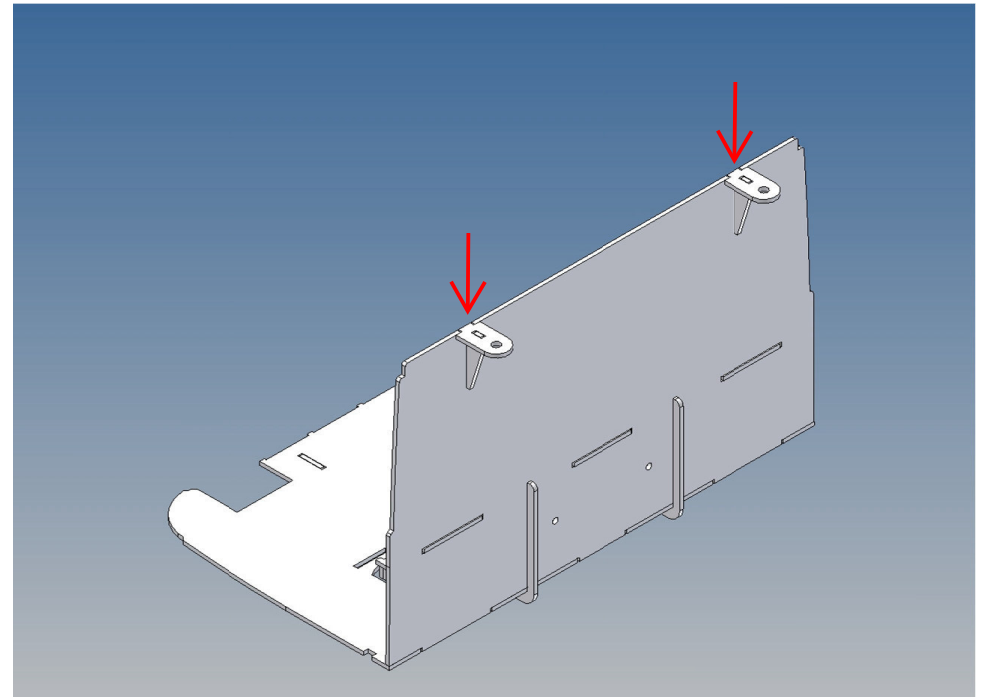
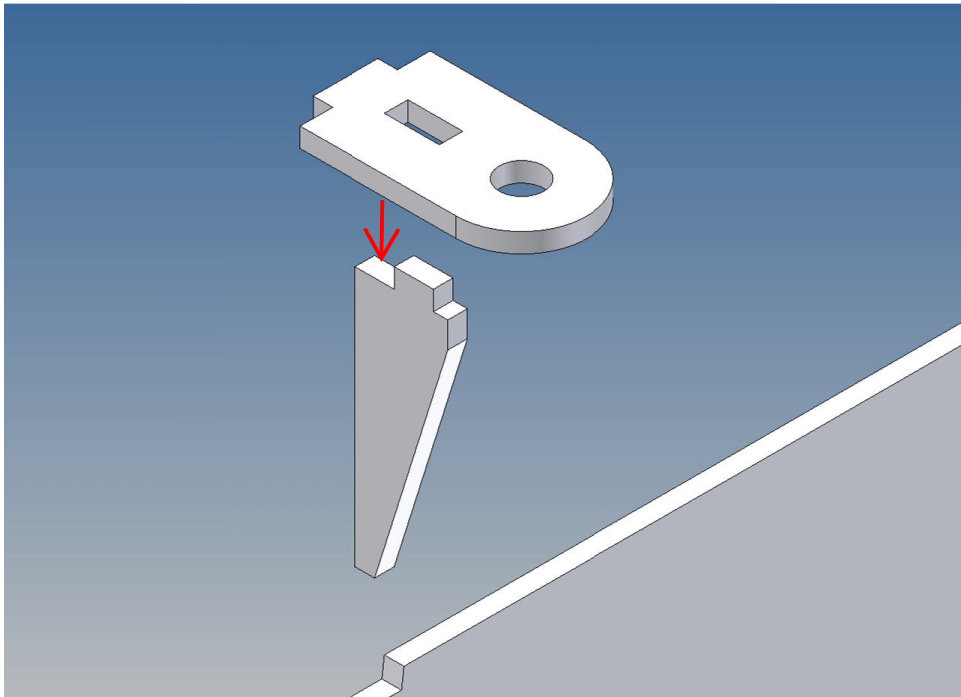
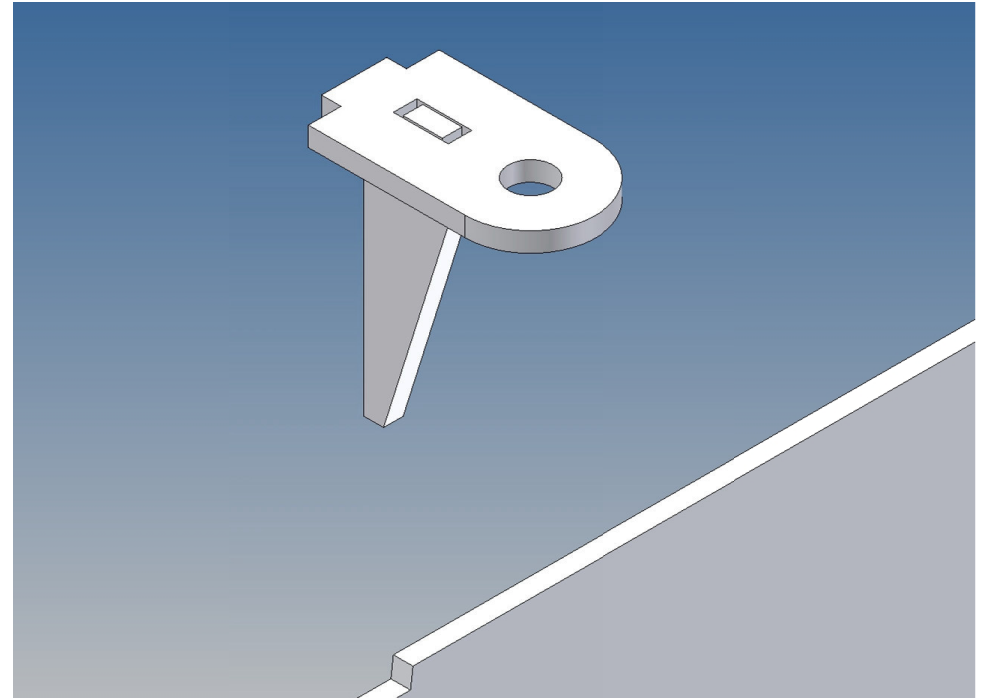
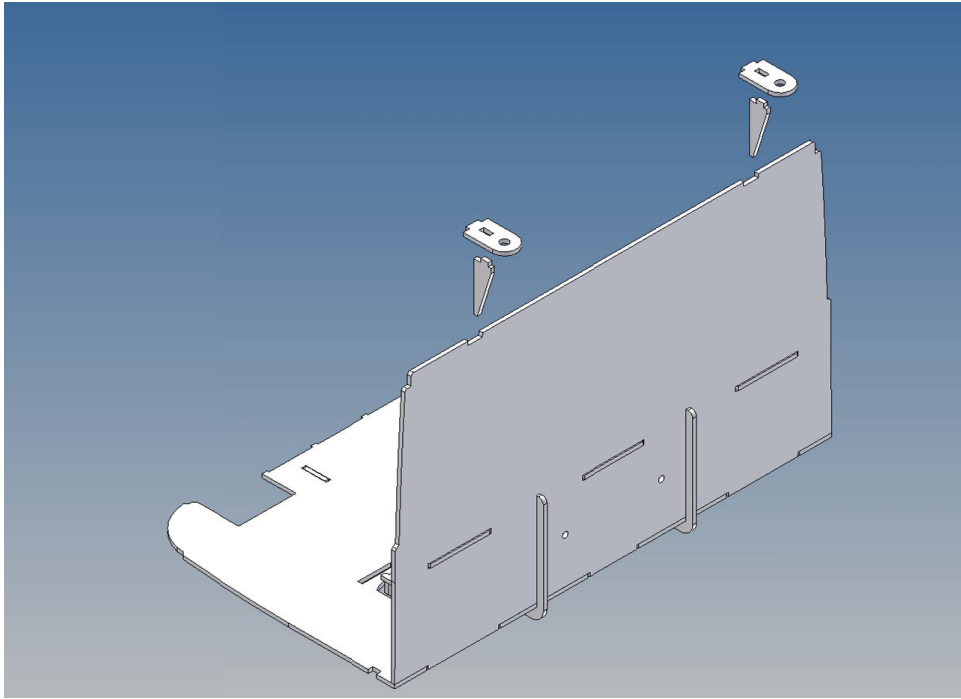
It is helpful to fix the parts at first only on a few points with super-glue and after a check along the edges fully with super-glue or a polystyrene-glue.

The parts are made of polystyrene, if you use super-glue in combination with activator spray, please be aware that the activator spray can destroy polystyrene – because of that you should use it very carefully or use only polystyrene-glue.

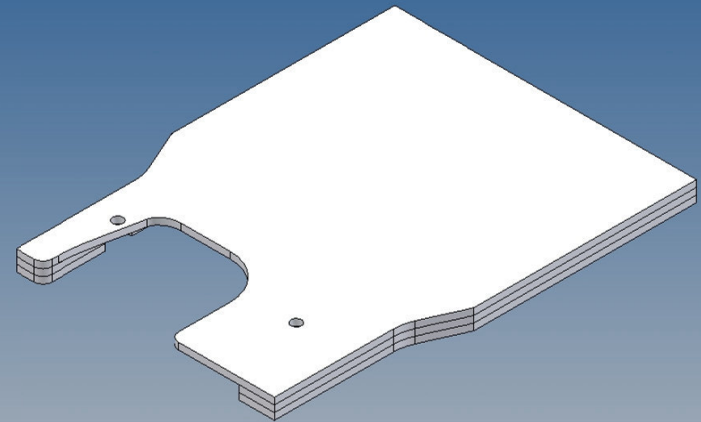
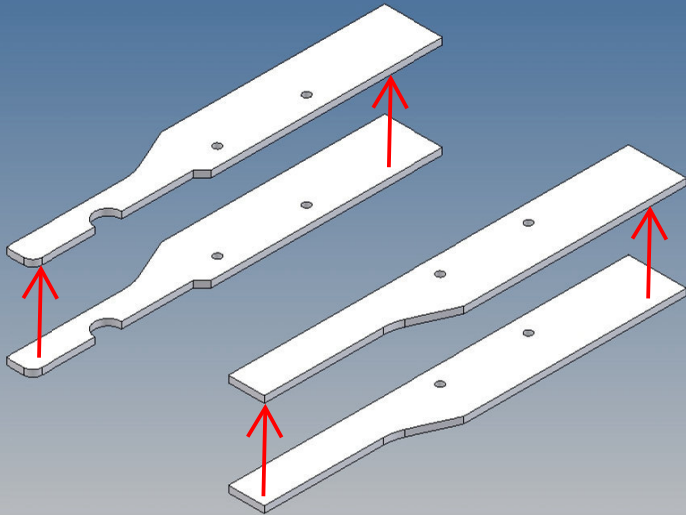
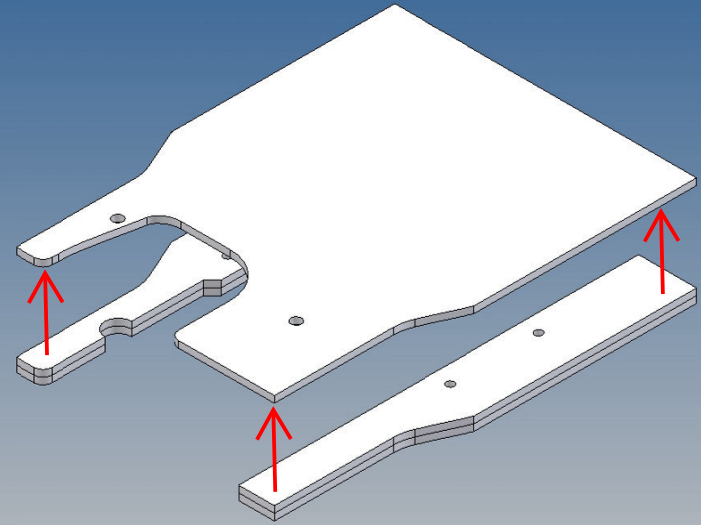
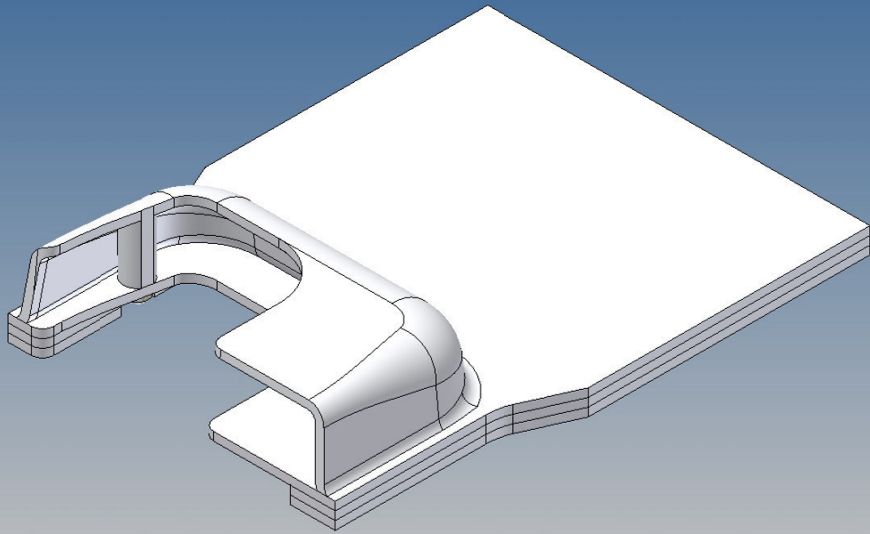
Fahrerhausboden/  
Cab floor

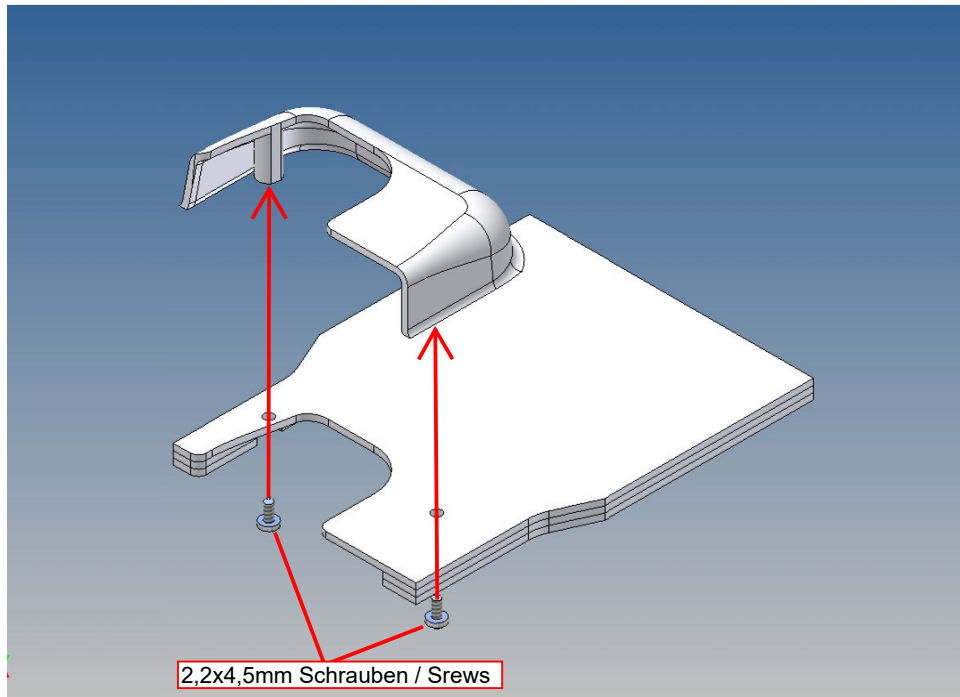




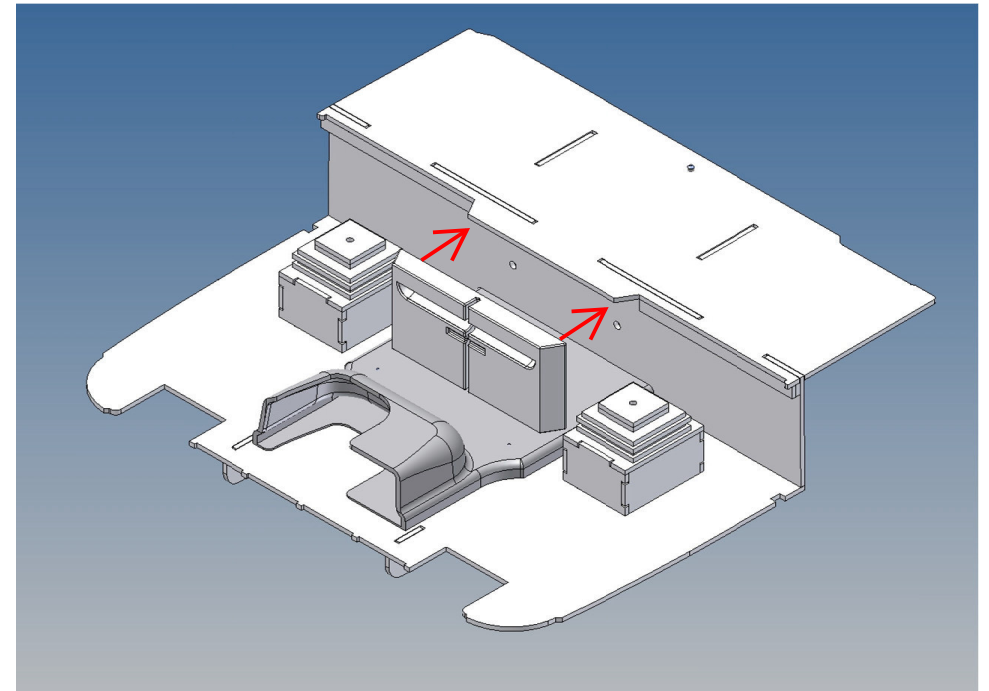
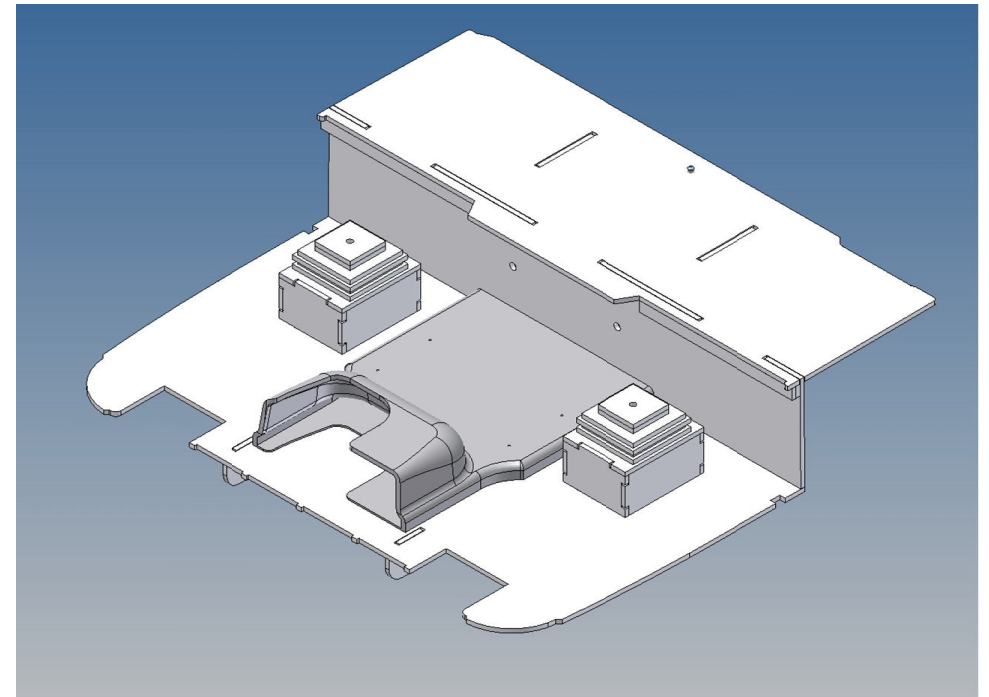
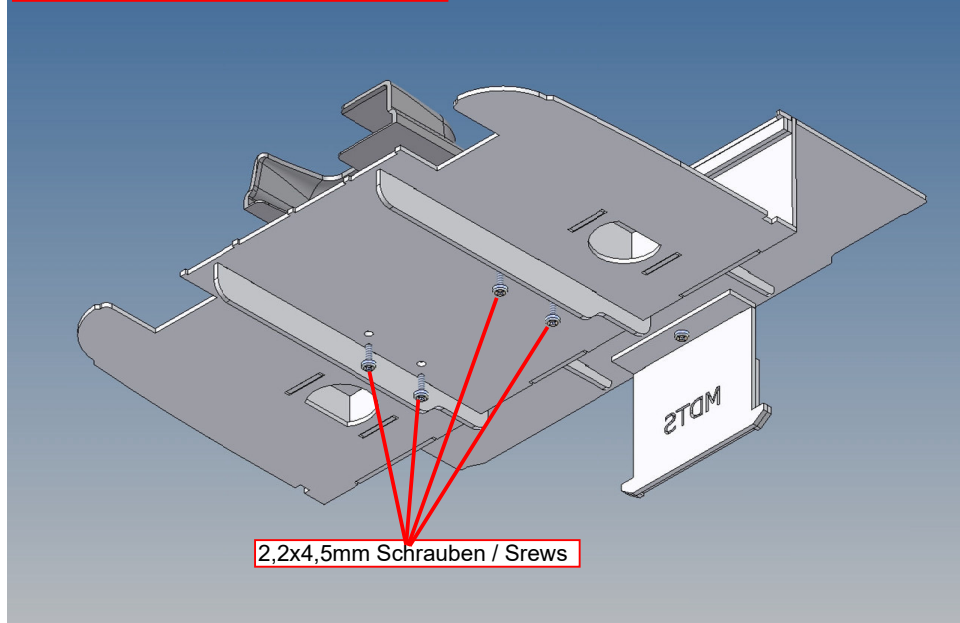


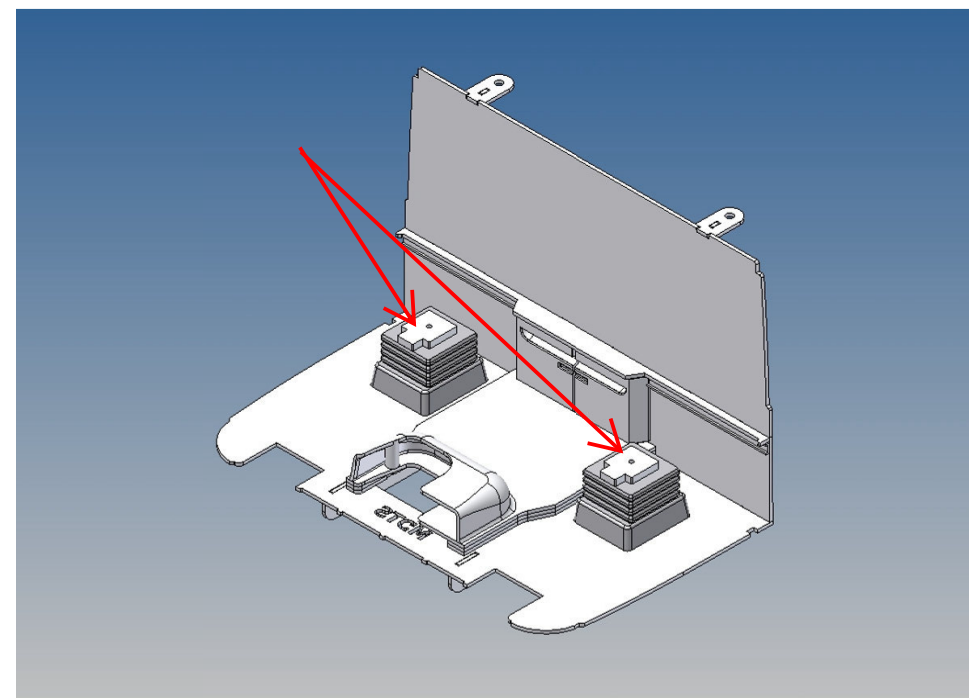
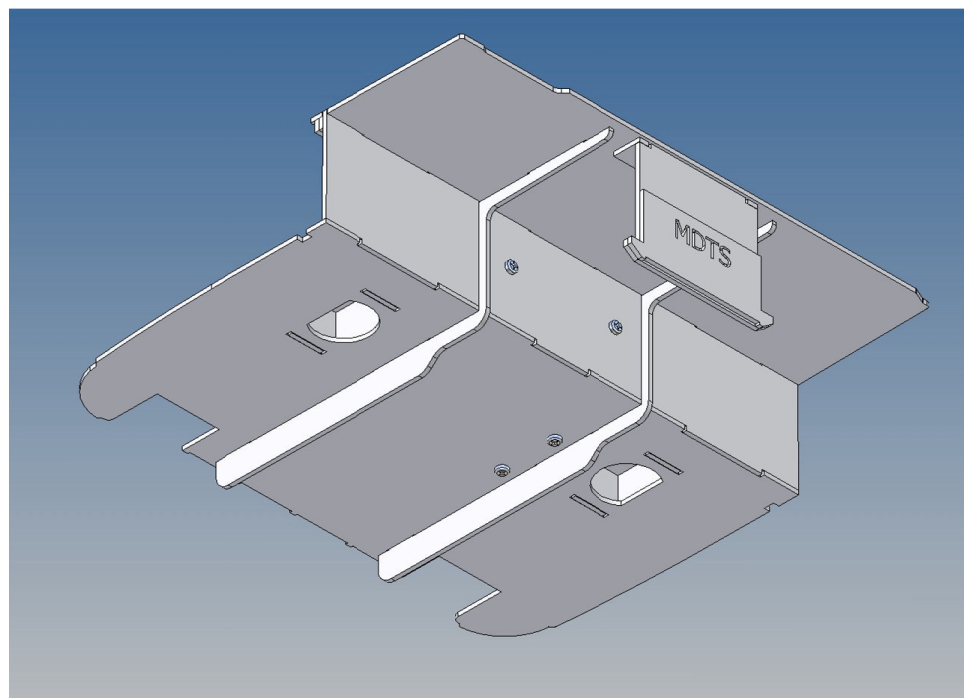
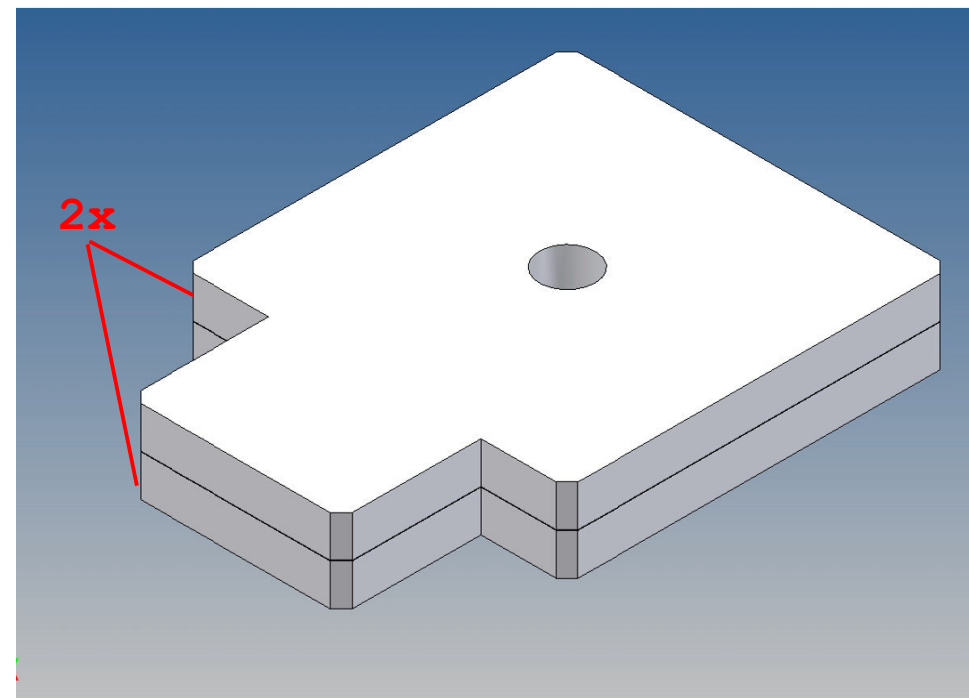
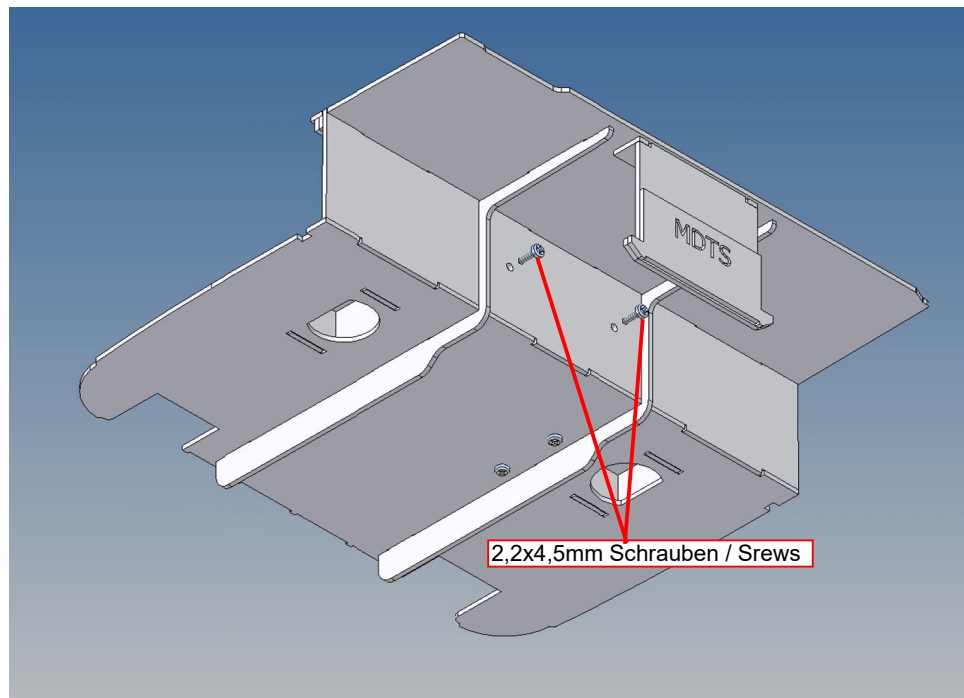
Motortunnel /  
Engine tunnel





Beispiel am Fahrerhausboden mit Liege /  
Example on the driver's cab floor with bed





**Annotation:**

Good luck and have fun - your MDTechShop team

[www.MDTechShop.de](http://www.MDTechShop.de)

For questions or replacement part requests please send a short e-mail.

**Warning:**

**This is not a toy! It contains small parts! Keep it away from young children!**